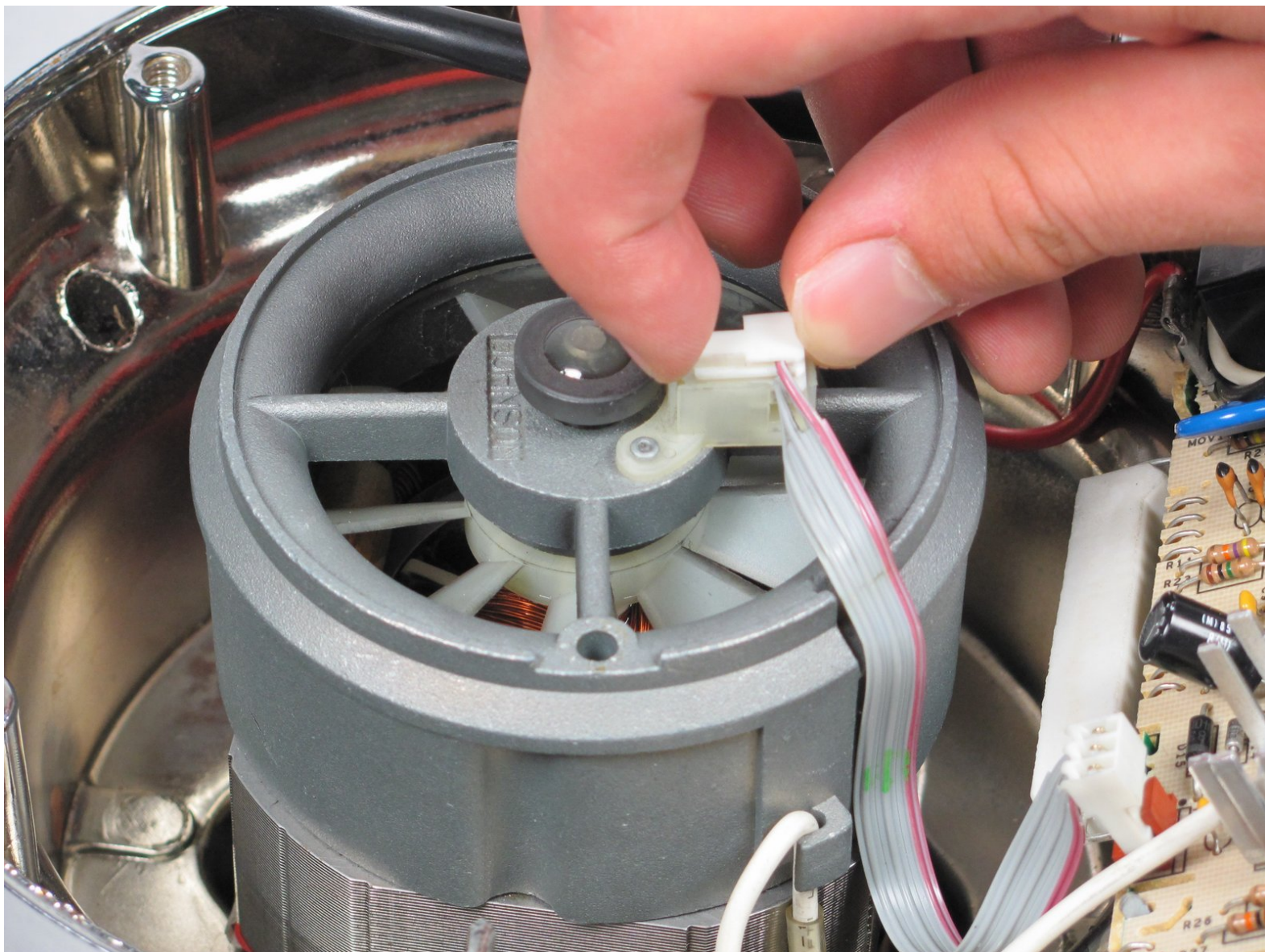




# KitchenAid KSB5CR Ribbon Cable Replacement

This guide will demonstrate how to properly remove the ribbon cable.

Written By: Cameron Geehr



---

## INTRODUCTION

The ribbon cable connects the logic board to the motor. It looks like a gray ribbon with a red stripe.

---



### TOOLS:

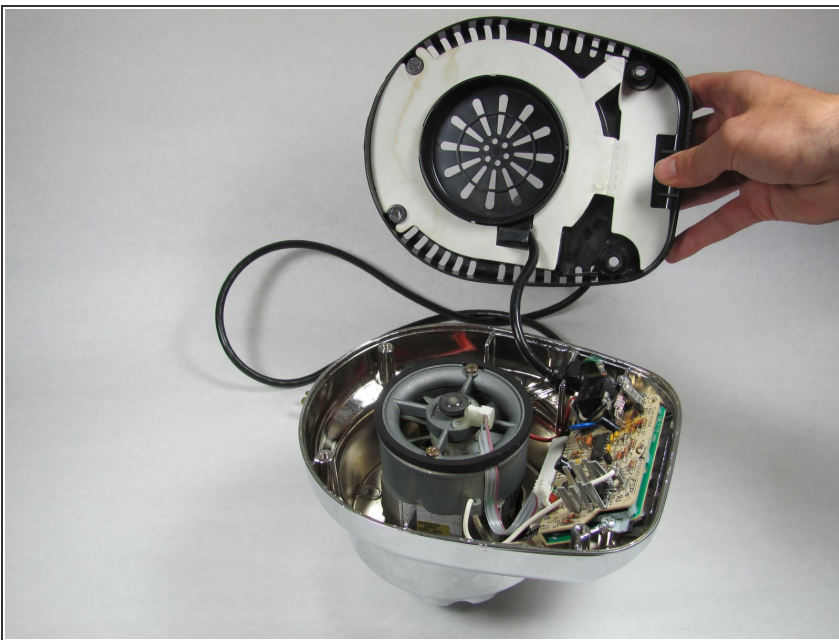
- [8" Needle Nose Plier](#) (1)
  - [Phillips #2 Screwdriver](#) (1)
-

## Step 1 — Removing the Back Panel Part 1



- Remove the glass container and place the blender upside down on a solid surface.
- Remove the four rubber feet using the needle nose pliers.
- Remove the four #7.5 Phillips 25mm screws that were located underneath the rubber feet using the Phillips #2 screwdriver.

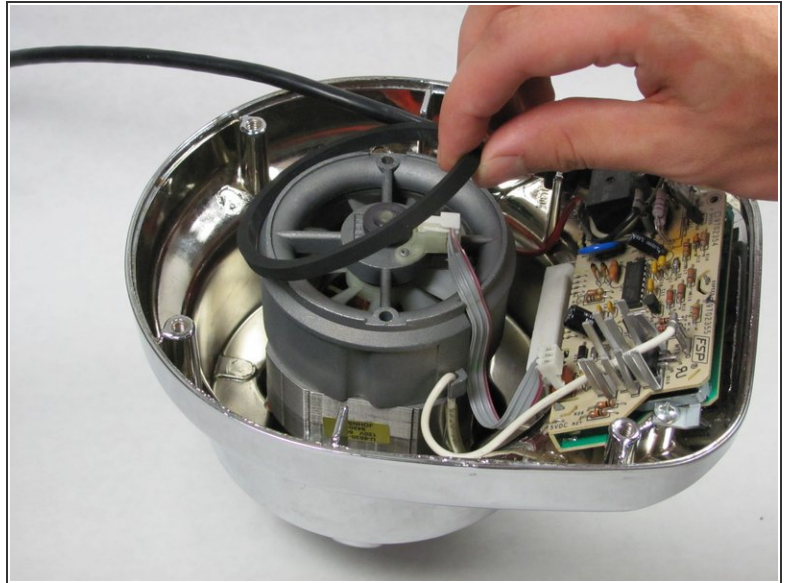
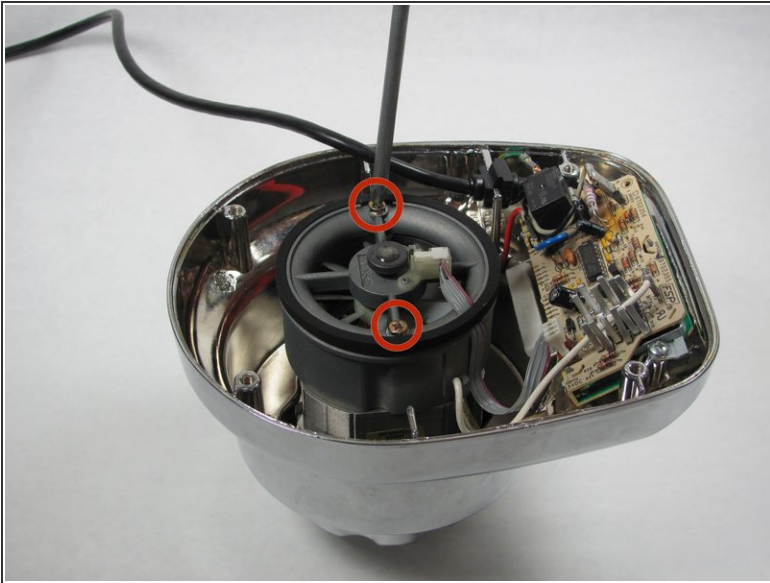
## Step 2 — Removing the Back Panel Part 2



- Lift the back panel up, sliding it along the power cord.

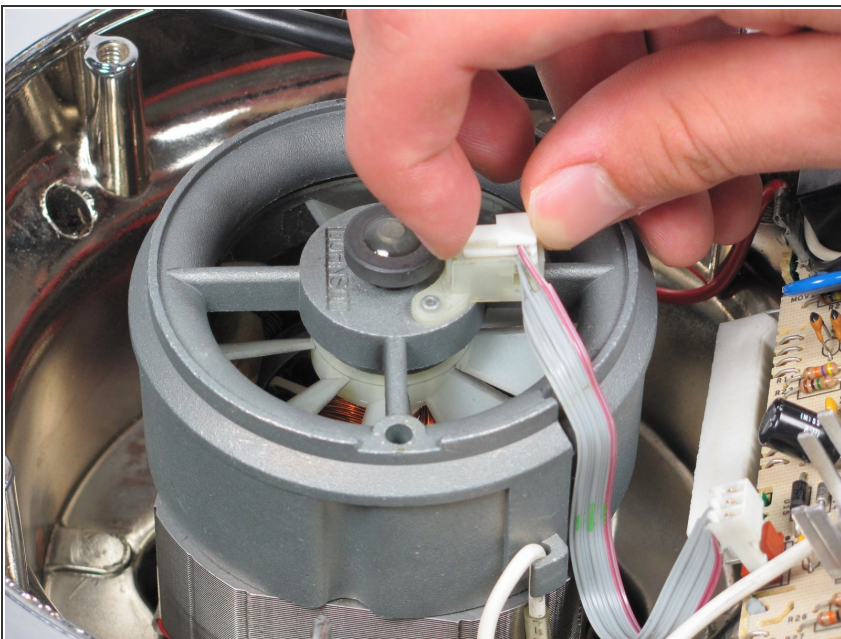


### Step 3 — Removing the O-Ring



- Remove the two #6 Hex 82mm screws using the Phillips #2 screwdriver.
- Remove the rubber O-ring by lifting it up.

### Step 4 — Removing the Ribbon Cable



- Remove the ribbon cable from the chassis by lifting it up.
- Remove the other end of the ribbon cable from the circuit board by lifting it up.

To reassemble your device, follow these instructions in reverse order.