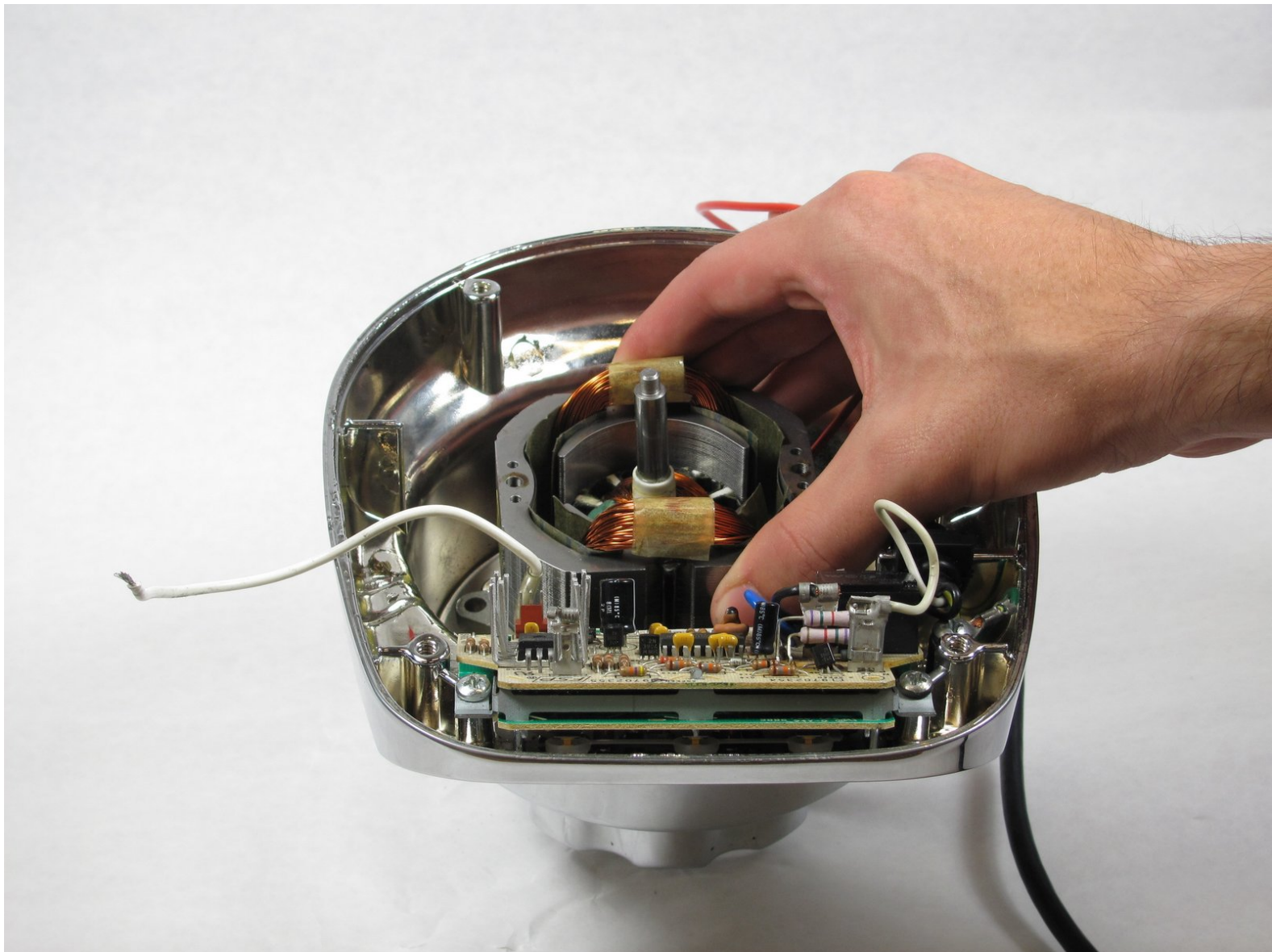




KitchenAid KSB5CR Motor Replacement

This guide will demonstrate how to properly remove the motor.

Written By: Cameron Geehr



INTRODUCTION

The motor is the driving force of the blender. It sits in a metal container and is surrounded by copper wire.



TOOLS:

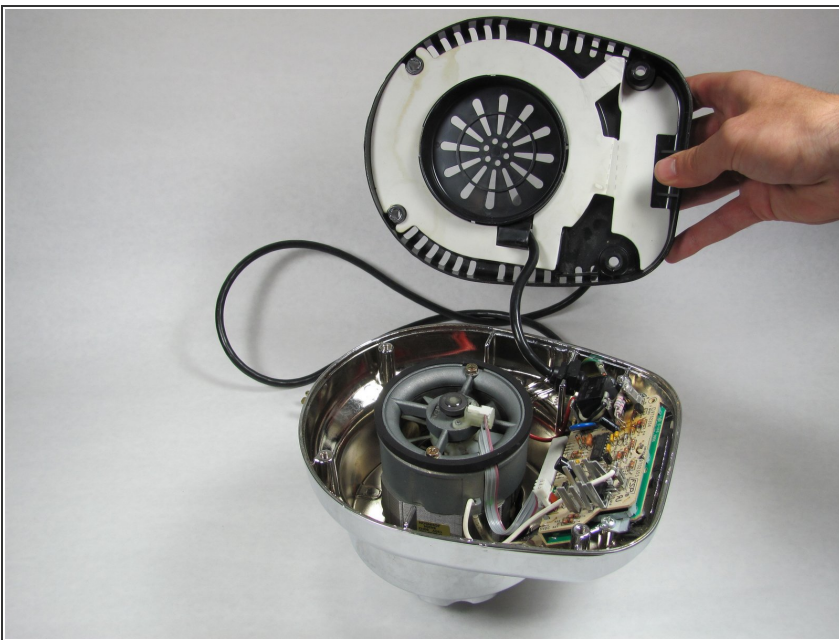
- [Phillips #2 Screwdriver](#) (1)
 - [8" Needle Nose Plier](#) (1)
-

Step 1 — Removing the Back Panel Part 1



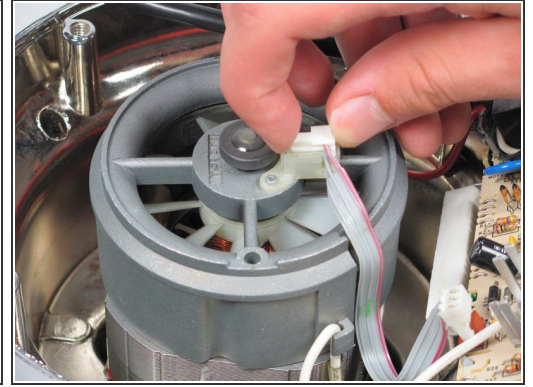
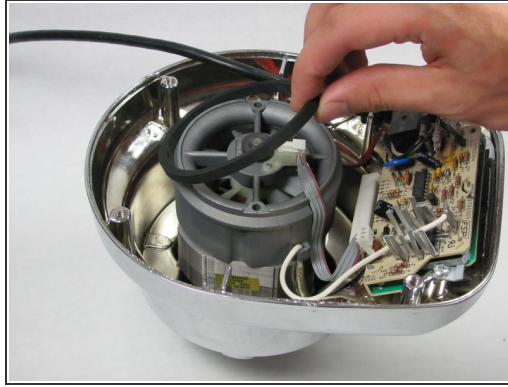
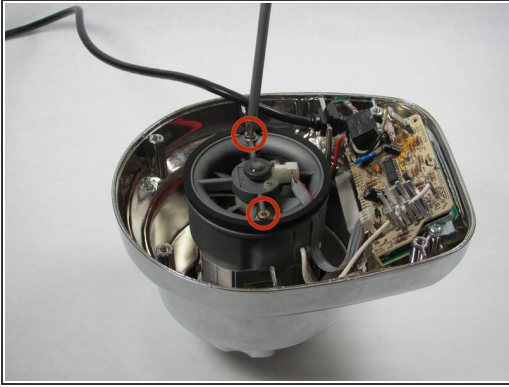
- Remove the glass container and place the blender upside down on a solid surface.
- Remove the four rubber feet using the needle nose pliers.
- Remove the four #7.5 Phillips 25mm screws that were located underneath the rubber feet using the Phillips #2 screwdriver.

Step 2 — Removing the Back Panel Part 2



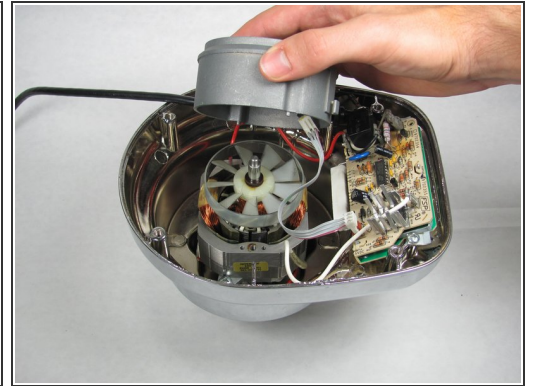
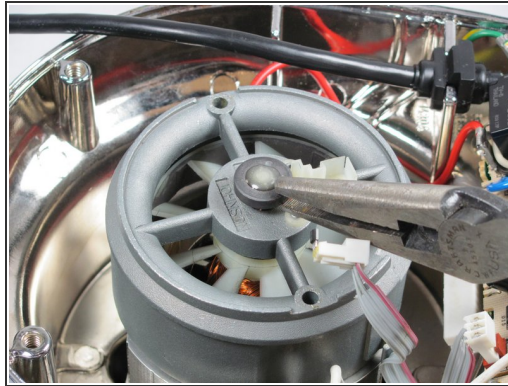
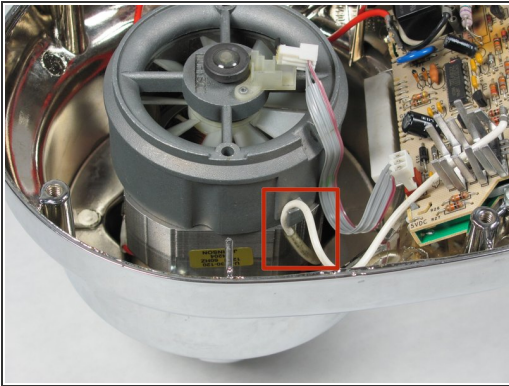
- Lift the back panel up, sliding it along the power cord.

Step 3 — Removing the Fan Chassis Part 1



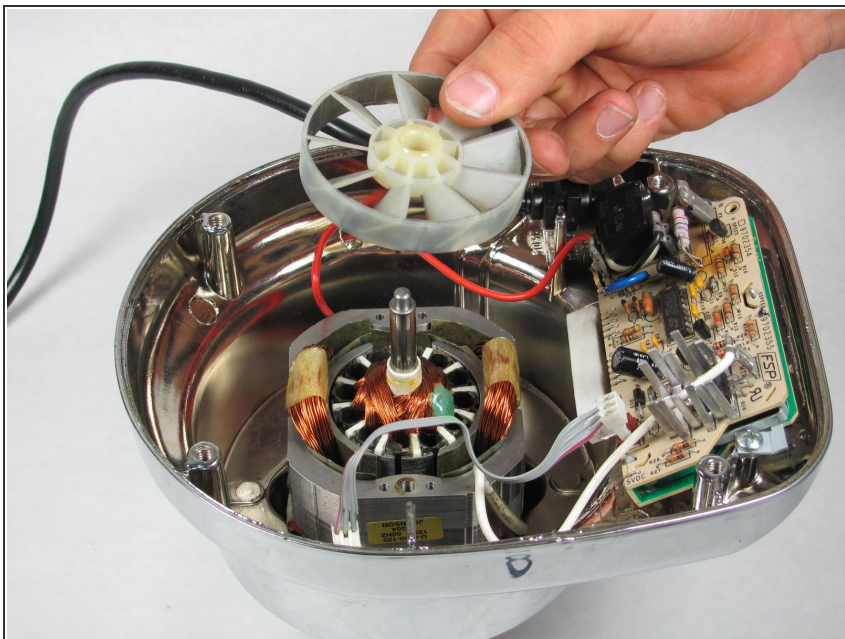
- Remove the two #5 Phillips 95 mm machine screws using the Phillips #2 screwdriver.
- Remove the rubber O-ring by lifting it up.
- Remove the ribbon cable from the chassis by lifting it up.

Step 4 — Removing the Fan Chassis Part 2



- Unhook the white wire that is looped around the peg by pulling it out of the clip.
- Repeat this process with the red wire on the other side of the chassis.
- Remove the end cap using the 8" needle nose pliers.
- Pull up the fan chassis.

Step 5 — Removing the Fan



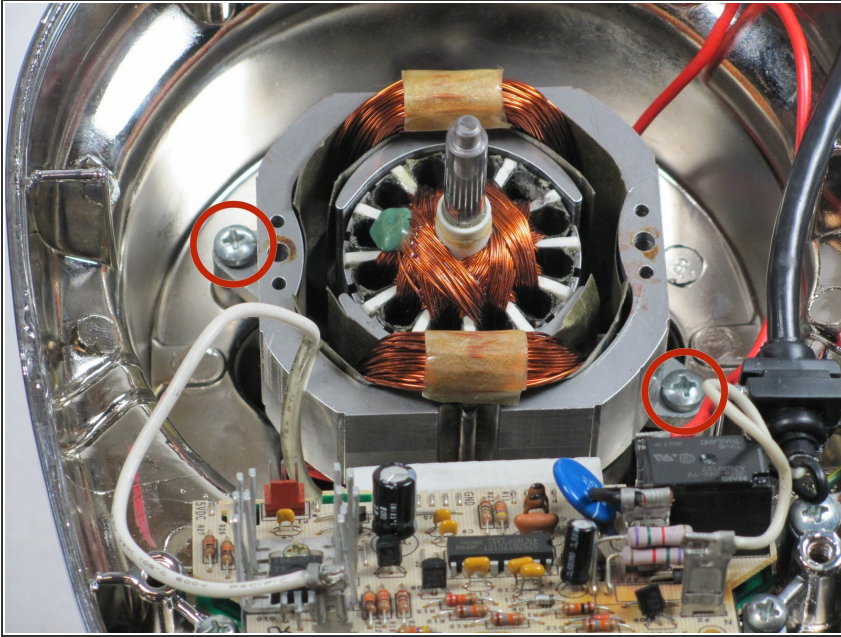
- Remove the fan by lifting it upwards.
- ⓘ This step is difficult and requires force. Use of both hands is recommended.

Step 6 — Removing the Metal Cap



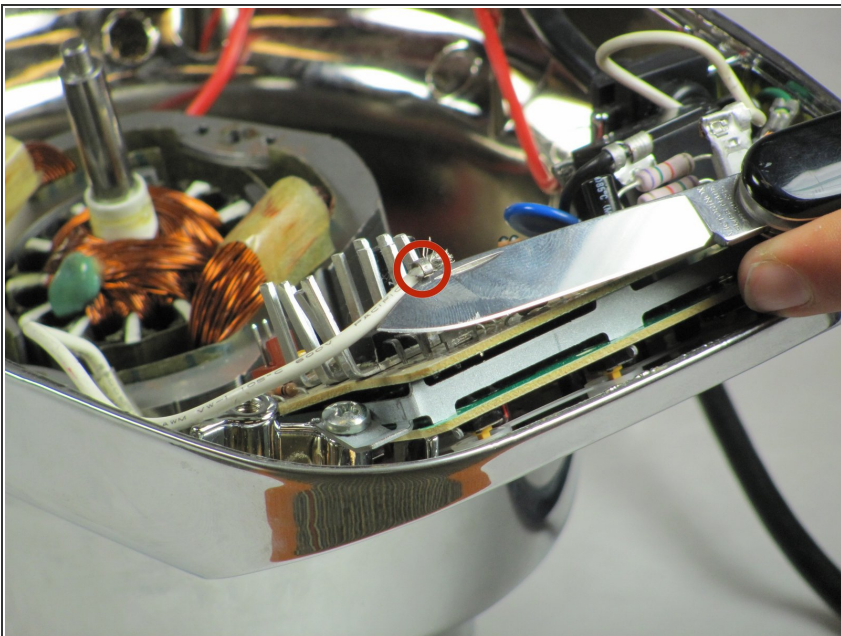
- Use the needle nose pliers to turn the coupling clockwise to loosen it.

Step 7 — Removing the Screws



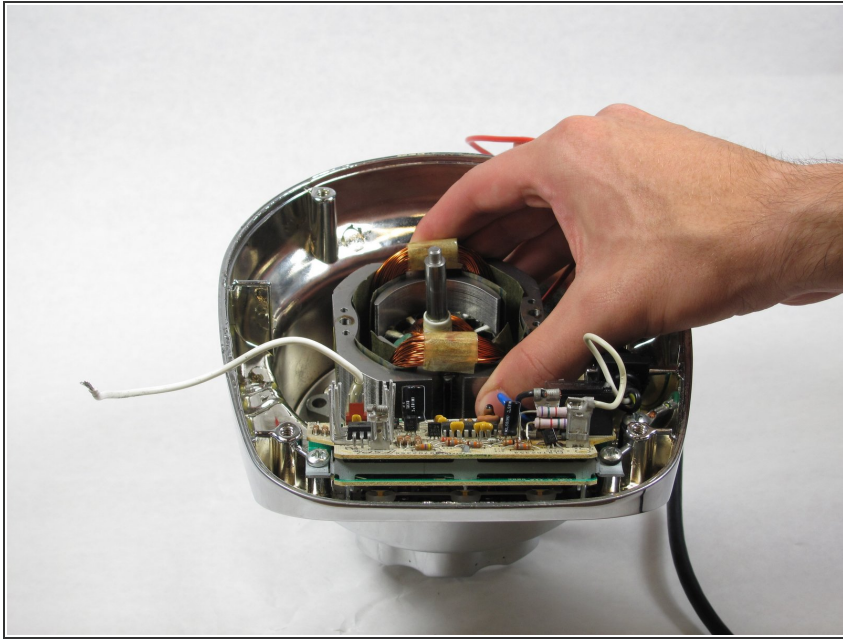
- Rotate the blender 90 degrees clockwise.
- Remove the two #8 Phillips 12 mm screws using the Phillips #2 screwdriver.

Step 8 — Detaching the Wire



- Slide the knife in the metal loop holding the insulation before the white copper wire, and wiggle the knife back and forth until it loosens.
- Pull the wire out from the metal loop that you loosened.

Step 9 — Removing the Motor



- Lift the motor up out of the chassis.

To reassemble your device, follow these instructions in reverse order.