



GravityLight Motor Replacement

This replacement guide shows how to unscrew the front of the GravityLight, separate the front panel from the back, and remove and replace the motor.

Written By: Anthony Jungquist



INTRODUCTION

If the white LED won't light up it may be an issue with the motor. You will need to take the Gravity Light apart and replace the motor.

TOOLS:

- [Phillips #00 Screwdriver](#) (1)
 - [Solder](#) (1)
 - [Flush Wire Cutter](#) (1)
 - [Soldering Iron](#) (1)
-

Step 1 — Removing the Front Panel



- Flip the GravityLight on its back and place it on a sturdy surface.
- Unscrew the three 2cm Phillips #00 screws on the back of the GravityLight's body.

Step 2 — Opening the Device Housing



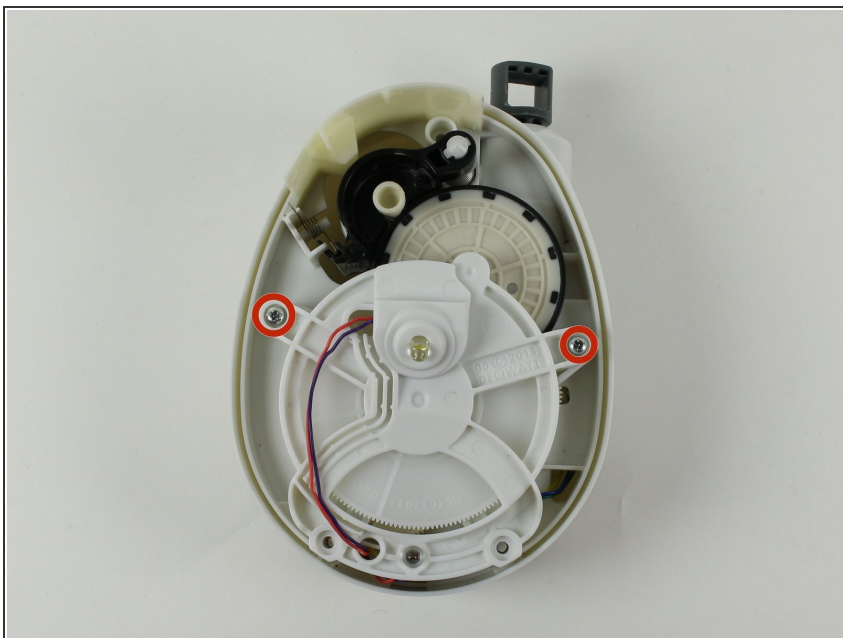
- ⚠ Some of the internal pieces may loosen or fall out during disassembly.
- Firmly grasp both parts of the GravityLight body and pull them apart.

Step 3 — Isolating the Back Panel



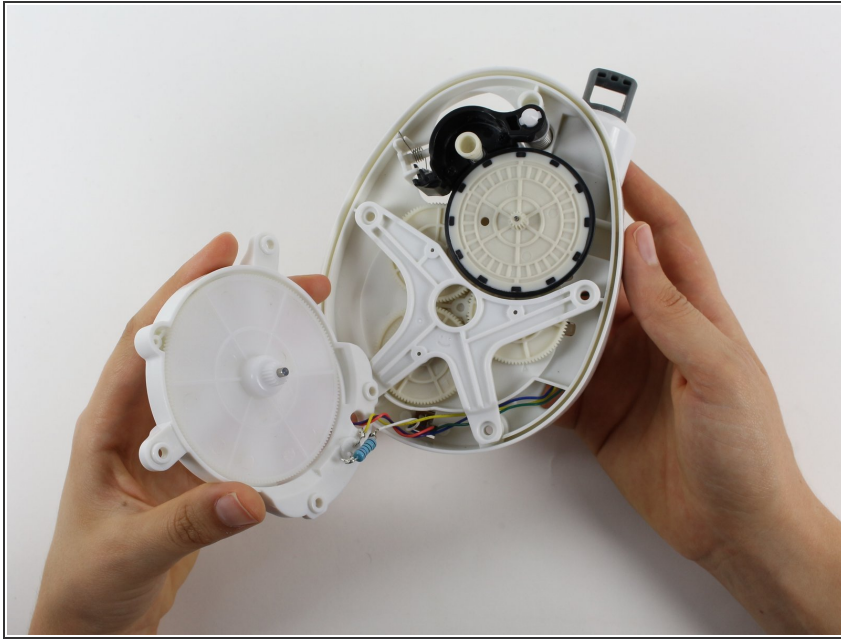
- Take the thicker of the two parts, the back piece, and place it face down on a sturdy surface.

Step 4 — Removing the Back Panel Screws



- Place the back panel, the larger of the two pieces, on a sturdy surface with its back down.
- Unscrew the two 2cm Phillips 00 screws on the inside of the back panel.

Step 5 — Removing the LED Housing



⚠ Watch out for the wires! Keep them attached for this entire guide, or the GravityLight will not work!

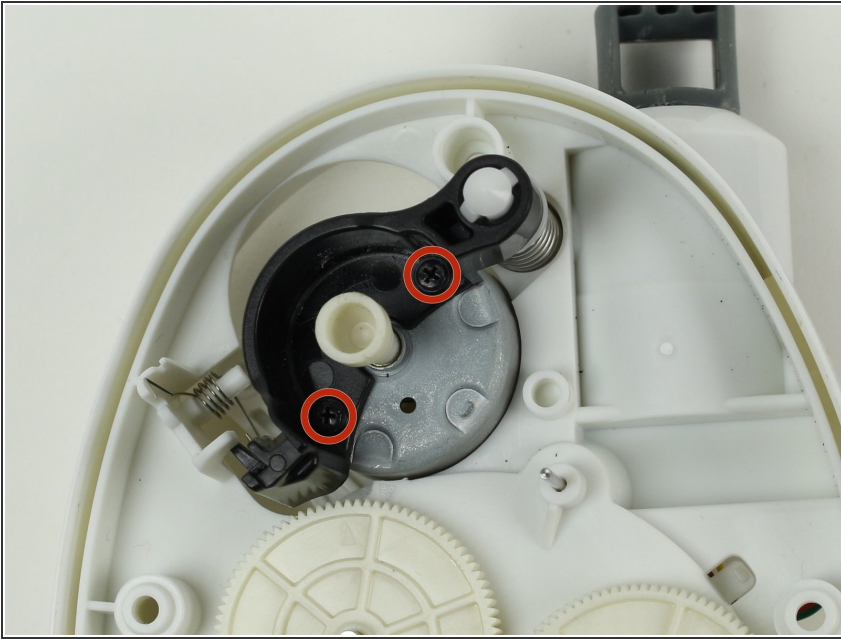
- Gently lift off the LED housing (the white disk).
- Set the LED housing on the table next to the body of the device.

Step 6 — Removing White Frame and Gear



- Lift off the white piece with four arms.
- Lift off the black-rimmed gear.
- Set both pieces aside in a safe place.

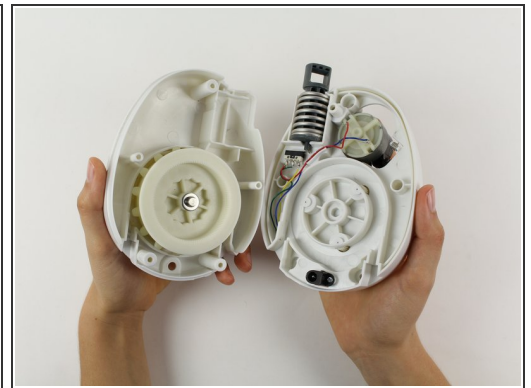
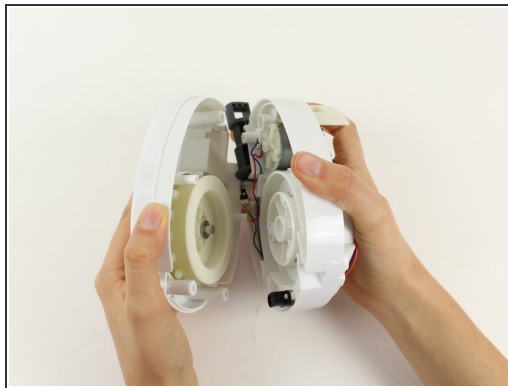
Step 7 — Removing the Motor Screws



- Remove the two 2cm Phillips 00 screws from the motor housing.

⚠ The spring pushing the motor housing may pop out once the motor has been removed.

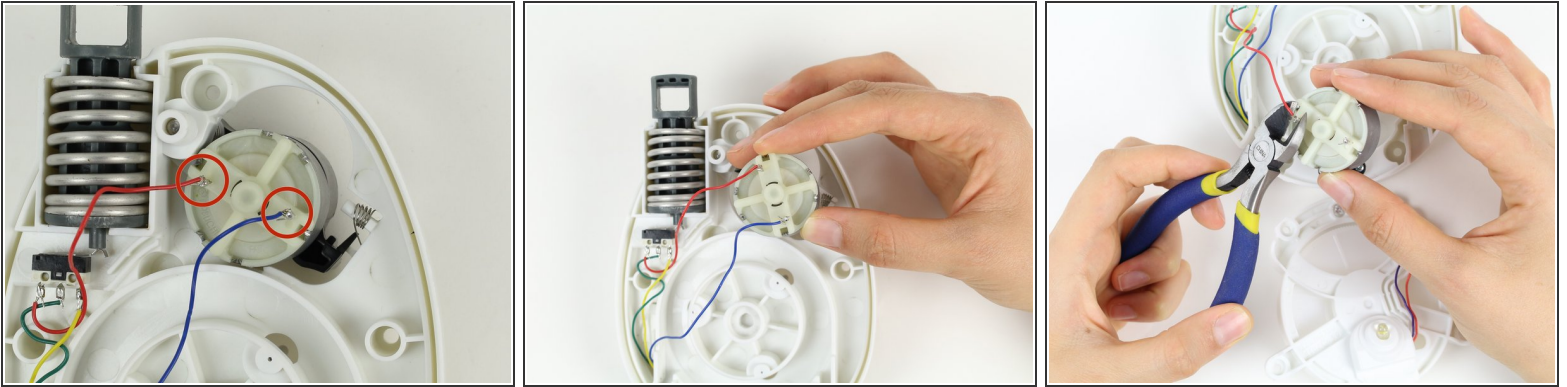
Step 8 — Separating the Back Panel Housing



⚠ Some of the internal pieces may loosen or fall out during disassembly.

- Firmly grasp both parts of the back panel and pull them apart.

Step 9 — Removing the Motor

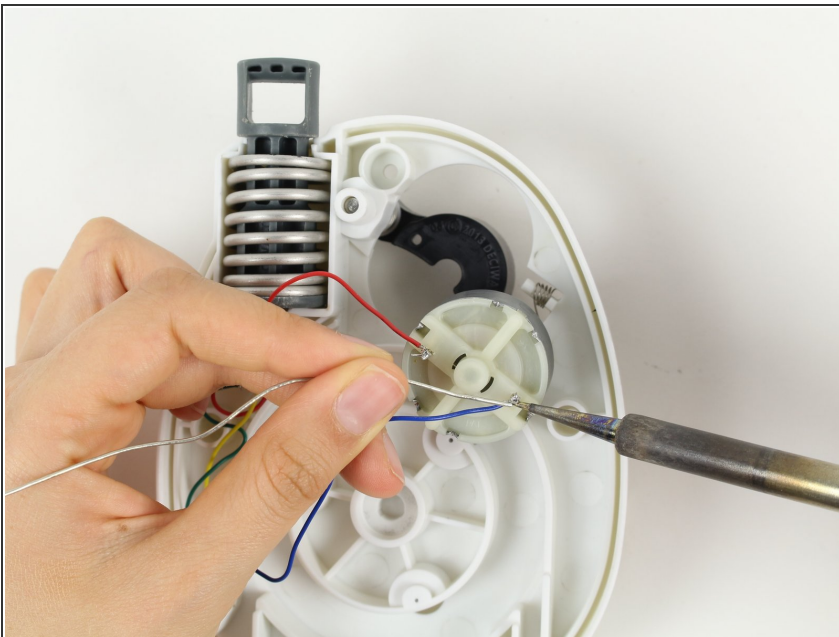


- Place the middle section flat with the side that holds the gear system down and locate the back of the motor.

⚠ Clip the wires close to the soldered joints.

- Lift the motor out of the middle section. Using the flush wire cutters, clip the red and the blue wires located on the motor's back.

Step 10 — Soldering the New Motor



- ✦ Take the new motor and solder the red and blue wires on to it.

ⓘ For information on how to solder look here: [How To Solder and Desolder Connections](#)

To reassemble your device, follow these instructions in reverse order.

This document was generated on 2020-11-28 03:35:30 AM (MST).

