



Sony Xperia Tablet Z Battery Replacement

Written By: Martin Luna



TOOLS:

Phillips #00 Screwdriver (1)

iFixit Opening Tool (1)

Tweezers (1)

Step 1 — Battery



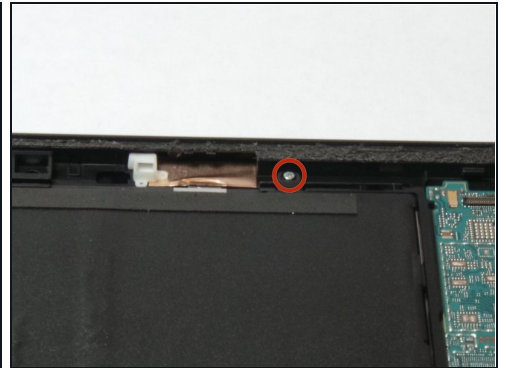
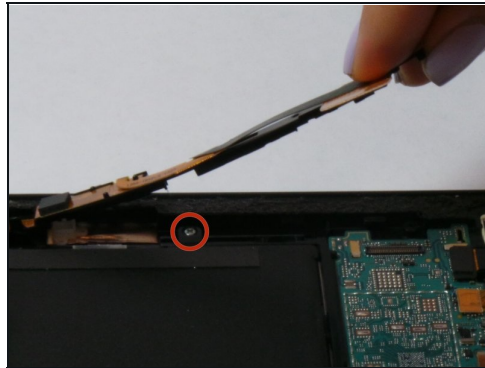
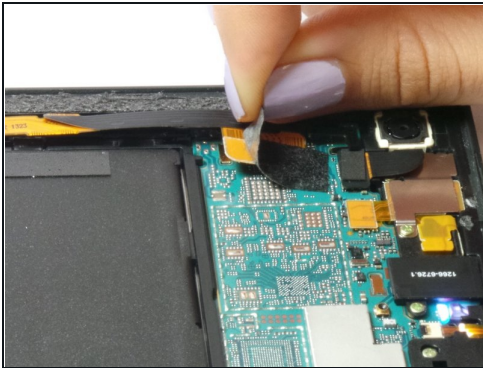
- Place the plastic removal tool in the corner of the object.
- Slide the plastic removal tool along the edges.

Step 2



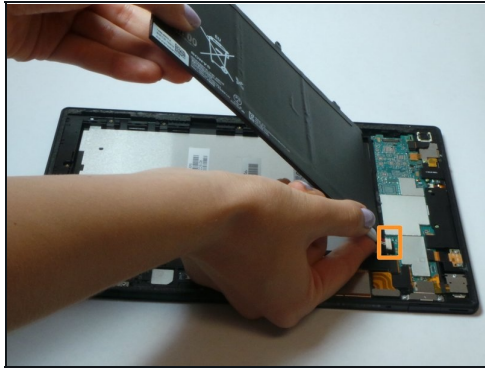
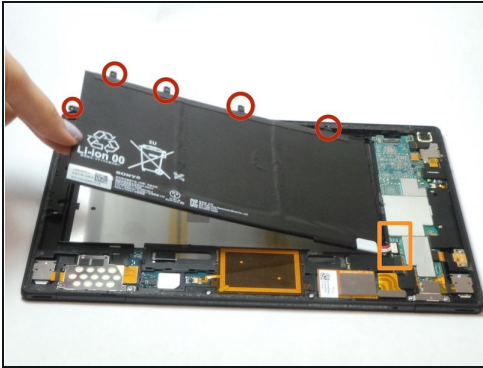
- Remove the cover
- Disconnect the battery, to avoid electric shock, by pulling up on the white plastic shown with the orange box.

Step 3



- In the top right corner of the device remove the piece of tape connecting the front camera to the motherboard.
- Then disconnect the camera from the motherboard.
- Lift and remove the front camera to expose hidden screw to replace battery.

Step 4



- Remove all screws connecting the battery to the tablet. Location of screws shown with red circles.
- Then lift the left side first then detach the connection in the lower right corner. Connection shown with orange box.
- Completely remove the battery.

To reassemble your device, follow these instructions in reverse order.