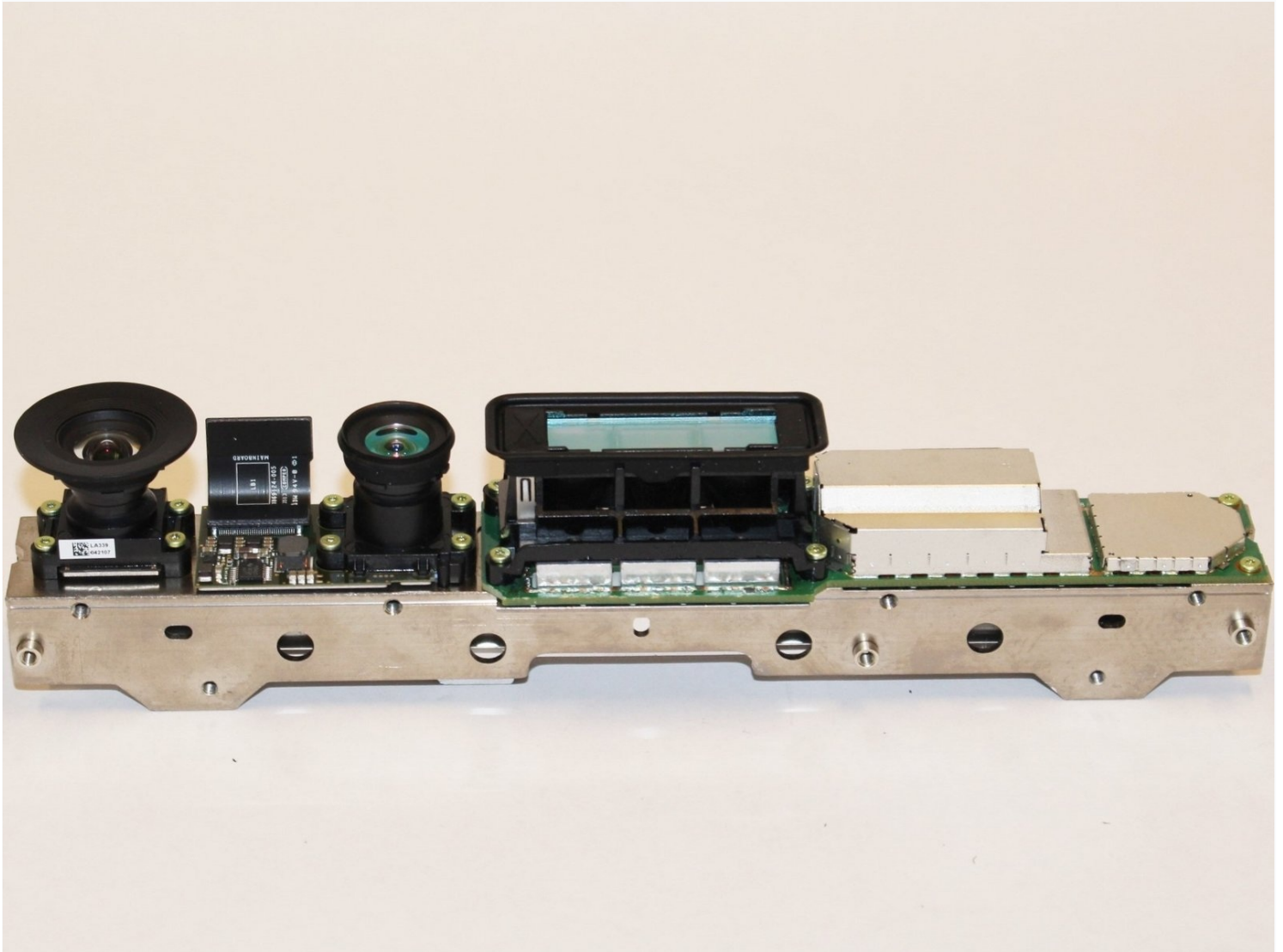




Xbox One Kinect Infrared Camera Replacement

The infrared camera receives IR signals emitted...

Written By: Laura Gonzalez



INTRODUCTION

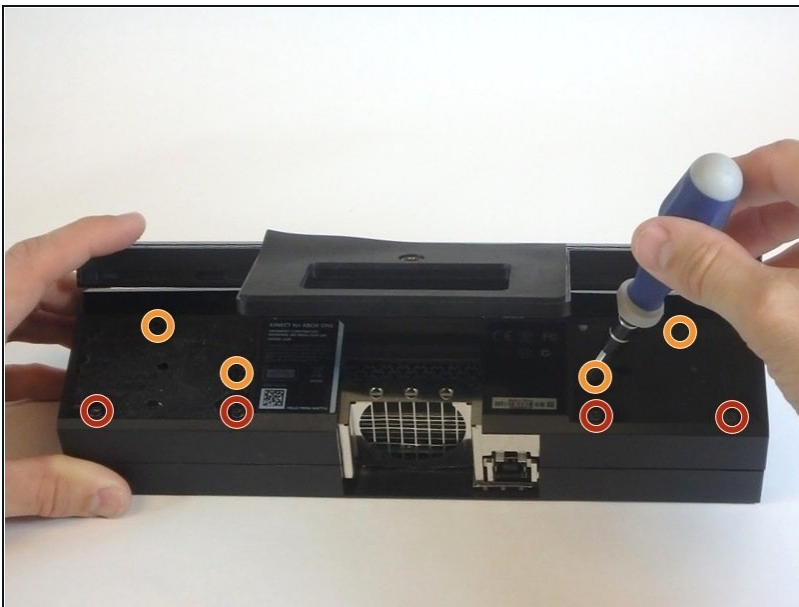
The infrared camera receives IR signals emitted from the blasters. This permits the Kinect to measure the distance to an object in its vicinity. The IR camera is mounted on the heat sink inside the device.

TOOLS:

T5 Torx Screwdriver (1)

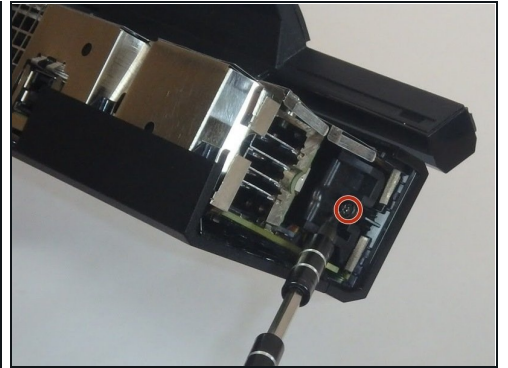
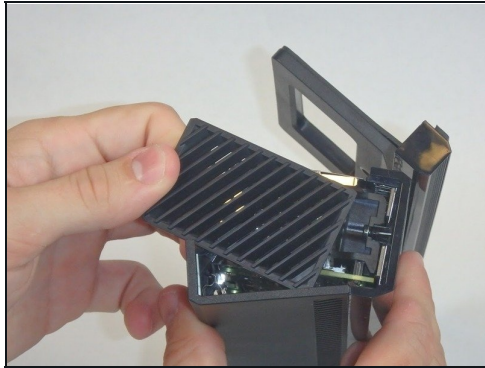
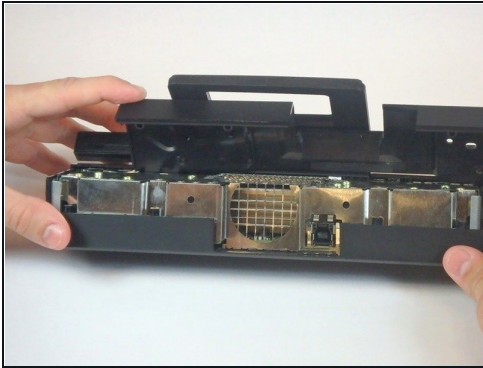
Spudger (1)

Step 1 — Outer Shell



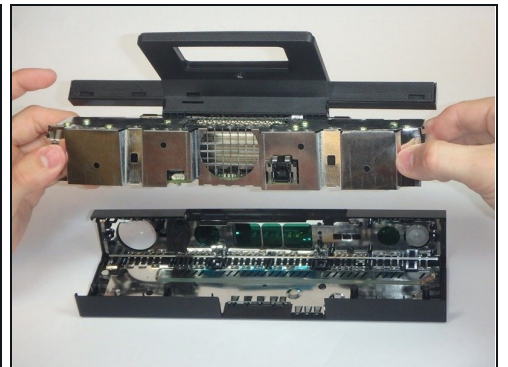
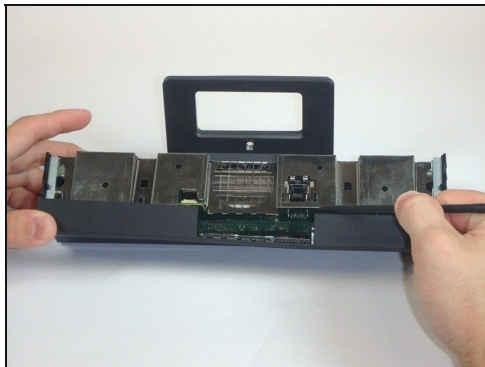
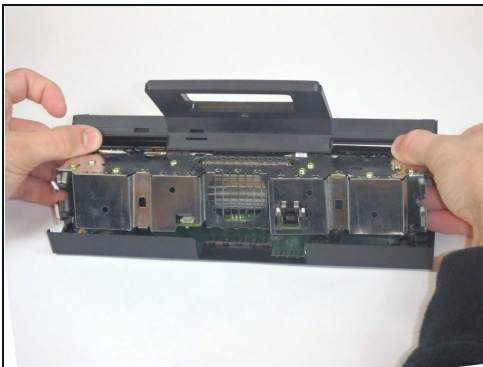
- Remove the sticker on the underside of the device.
- Remove the four 3.1x23.5 mm T10 screws underneath the sticker.
- While you're at it, remove the four 3.1x7.5 mm T10 screws beneath the sticker. Make note of the sizes and locations of the screws.

Step 2



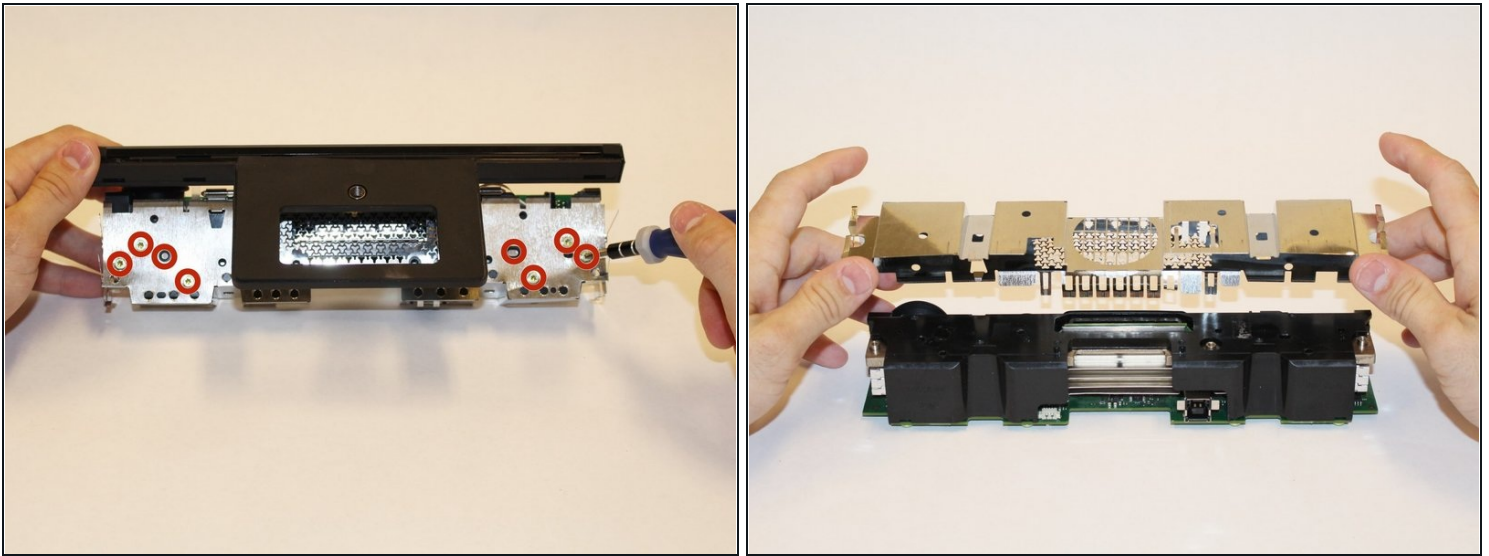
- Remove the back panel.
- Remove the black panels on either side of the Kinect, and remove the 3.1x7.5mm T10 screws underneath them.

Step 3



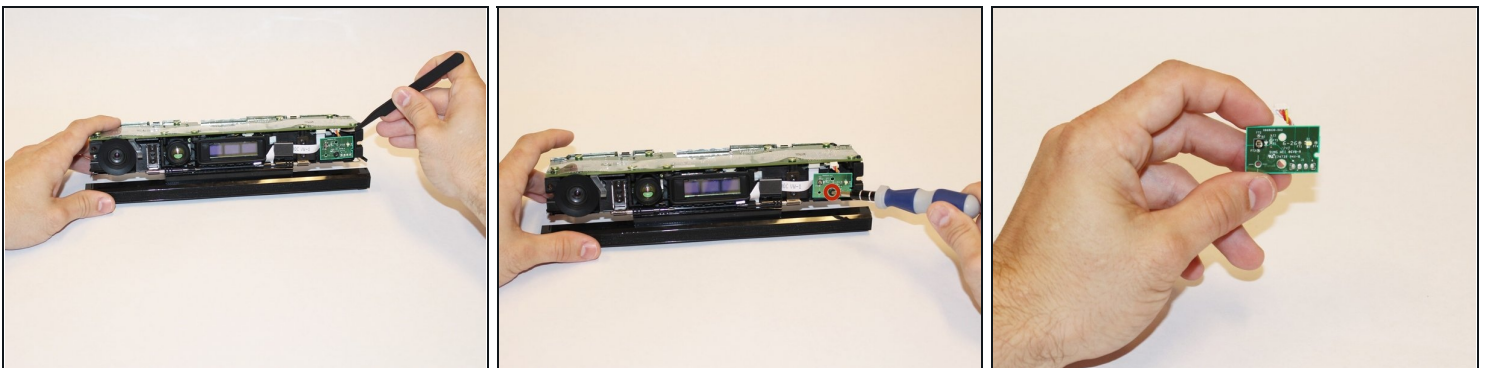
- Using your thumbs, press firmly against the outer case on either side of the stand. This will disengage the internal assembly.
- Lift the internal assembly with the spudger.
- Remove the assembly from the case. You now have access to the inner shell of the Kinect, along with the heat sink, microphone, and LED sensor.

Step 4 — Heat Sink Assembly



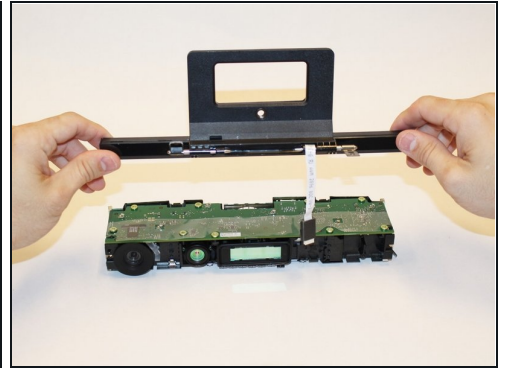
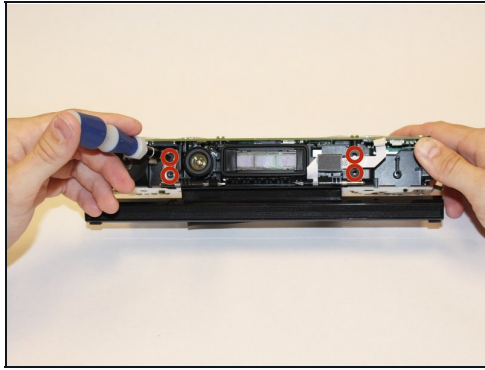
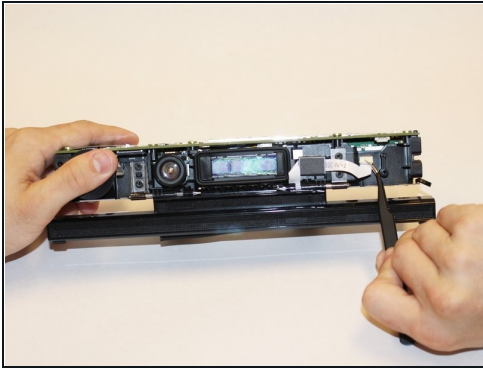
- Remove the eight 2.9x7.6 mm T9 screws from the rear of the internal case.
- Lift the internal metal case from the plastic shell enclosing the heat sink assembly.

Step 5



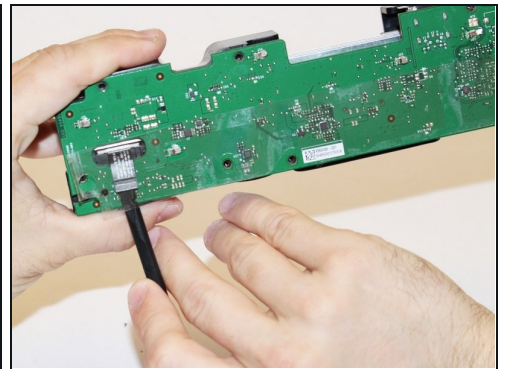
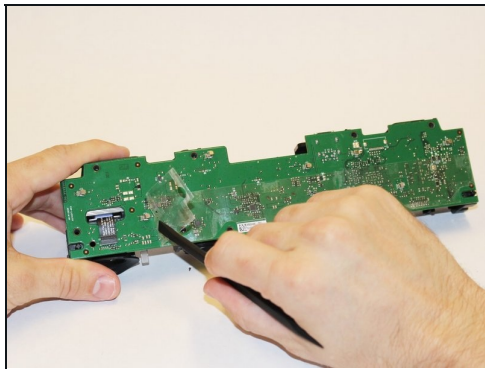
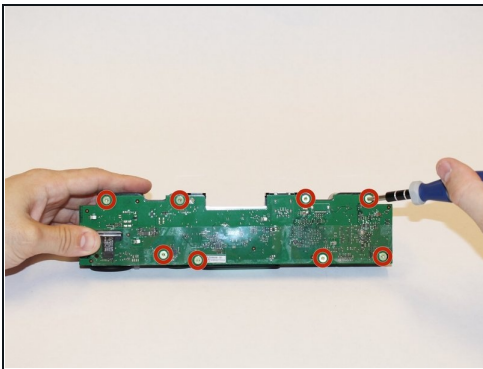
- Disconnect the ribbon cable between the sensor driver board and the motherboard.
- Remove the 3.0x7.5 mm T9 screw holding the sensor driver board to the heat sink.
- Remove the infrared sensor board for the Kinect.

Step 6



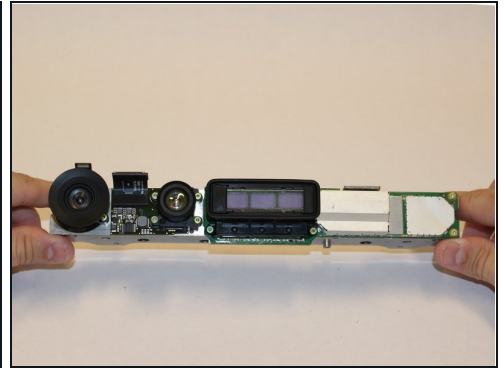
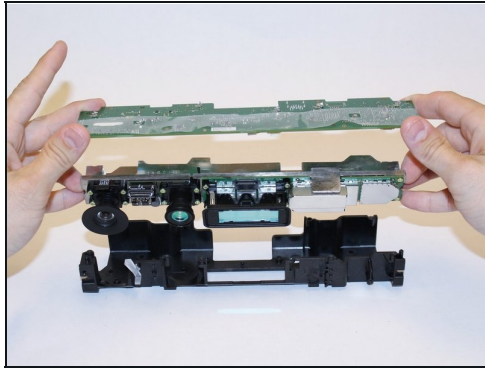
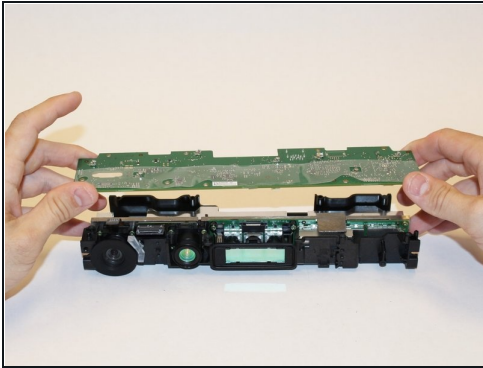
- Detach the ribbon cable leading to the microphone with the tweezers.
- Remove the four 3.1x7.7 mm T9 screws connecting the microphone to the heat sink assembly.
- Remove the stand.

Step 7



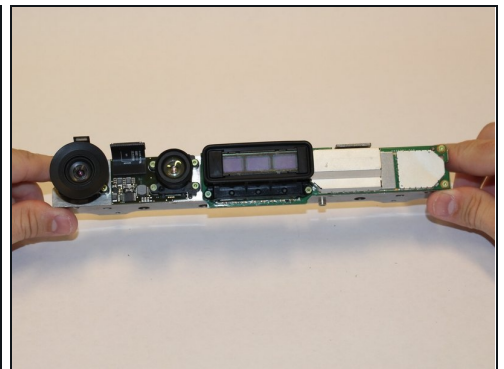
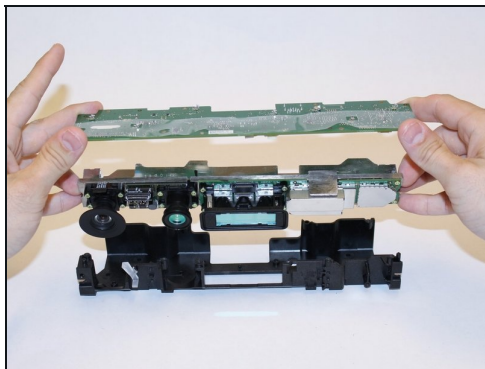
- Remove the eight 3.0x7.6 mm T9 screws from the motherboard.
- Peel away the plastic film from the motherboard using the spudger.
- Detach the ribbon cable leading to the color camera using the spudger.

Step 8



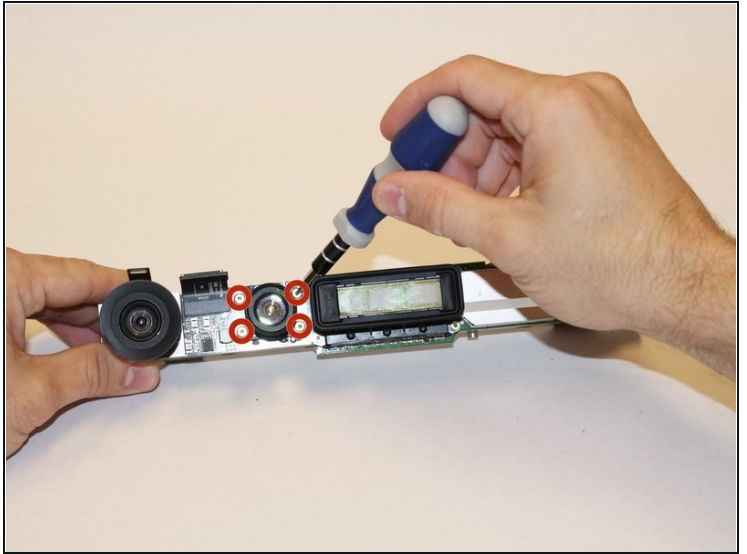
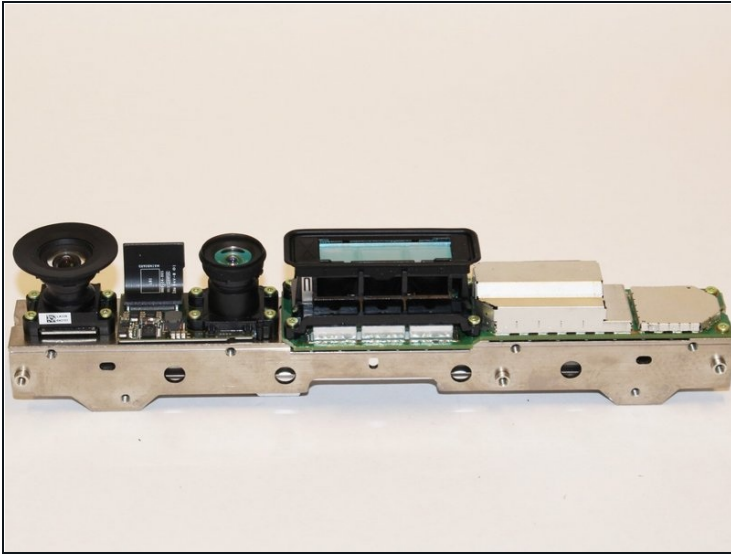
- Lift the motherboard and the heat sink assembly from the plastic shell. The components attached to the heat sink are now accessible.

Step 9 — Infrared Camera



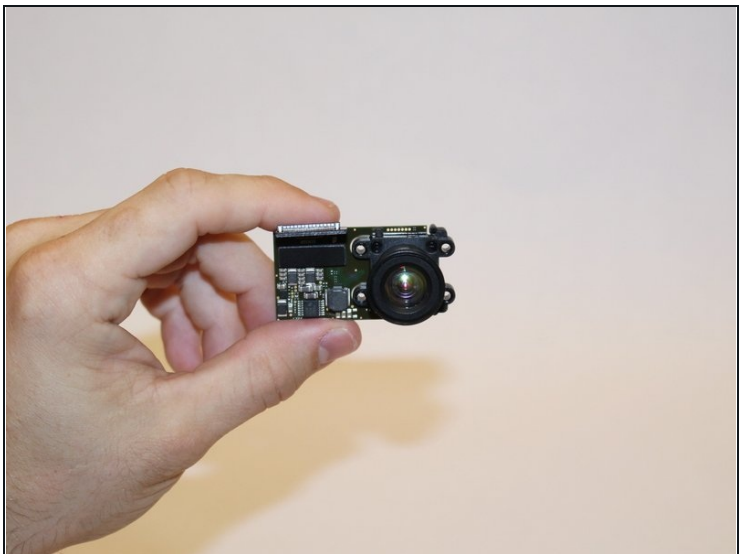
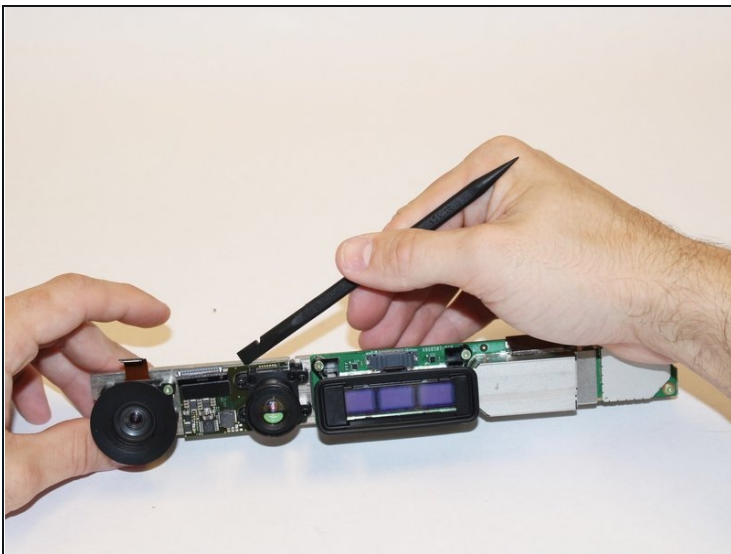
- First step is to make sure that the inner compartment containing the camera is separated from the outer casing.

Step 10



- Once the area where the camera is found is uncovered, use the T5 Torx Screwdriver to remove the four 1.9x10.2 mm screws.

Step 11



- Using the spudger, detach the camera from the base.

To reassemble your device, follow these instructions in reverse order.