



Sony Reader Touch Edition PRS-600 Battery Replacement

This a guide on how to replace the battery in the device

Written By: Terrika Ngobili





TOOLS:

- [Phillips #000 Screwdriver](#) (1)
 - [Spudger](#) (1)
-

Step 1 — Back Panel



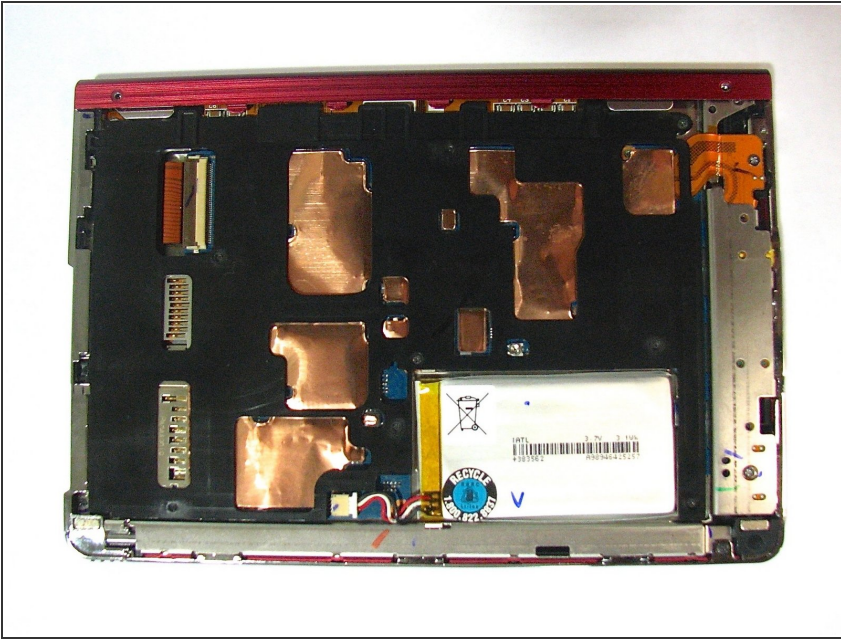
- Using the Phillips head screwdriver PH000, remove the two 1.4 mm screws that are located on the backside of the device.

Step 2



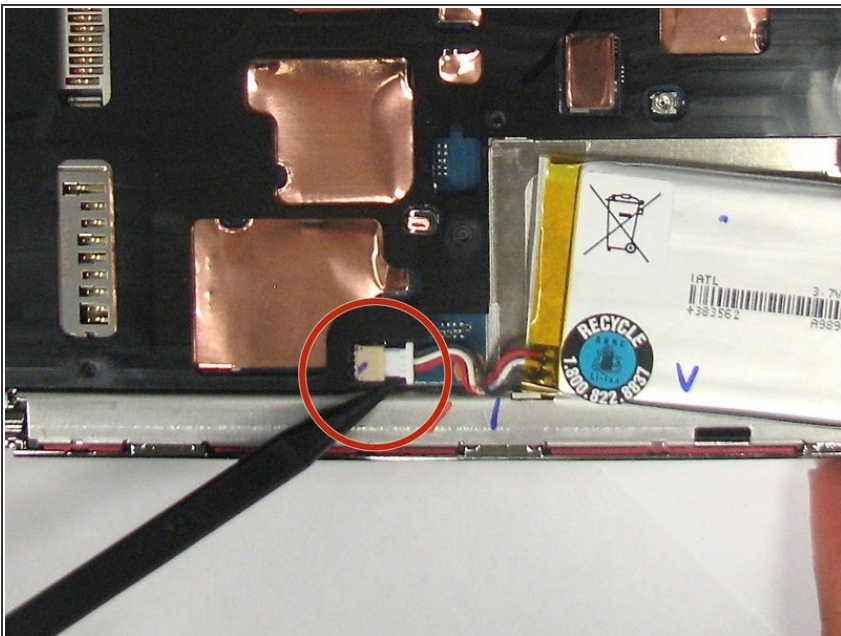
- Slide the back cover off by pushing it to the left, away from the side that held the screws.
- Remove the cover.

Step 3



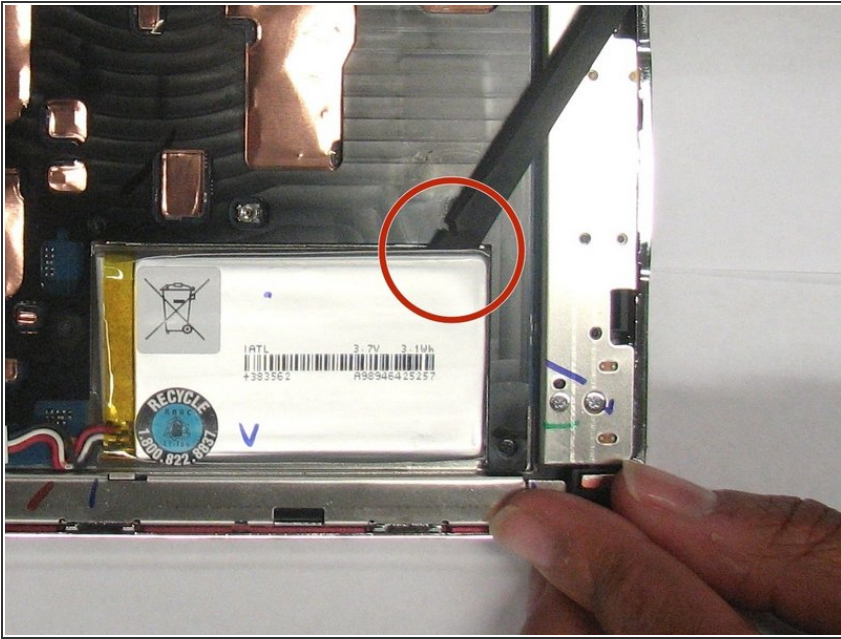
- This is what the device should look like once the back cover panel has been removed.

Step 4 — Battery



- Once the back cover has been removed locate the battery in the bottom right corner of the device.
- Using the pointed end of the spudger, push out the white plug that is connected to the battery from its beige base.

Step 5



- Use the flat end of the spudger to pry the battery out of its holder. There may be glue holding it in place.

To reassemble your device, follow these instructions in reverse order.