



# Dell Inspiron 15-3521 RAM Replacement

This replacement guide will explain how to...

Written By: Andrew Dippre



# INTRODUCTION


This replacement guide will explain how to insert a new memory card into the Dell Inspiron 15-3521 laptop. Keep in mind that to perform this replacement, you will be opening the interior of your device, so it is best to perform this replacement in a clean environment.

## TOOLS:

Phillips #0 Screwdriver (1)

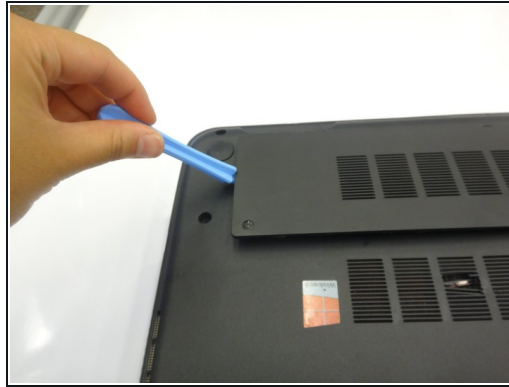
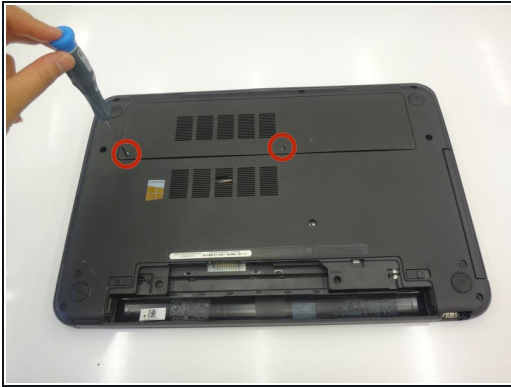
### Step 1 — Remove the battery



 We are removing the battery to avoid the possibility of an electrical discharge when working with this system.

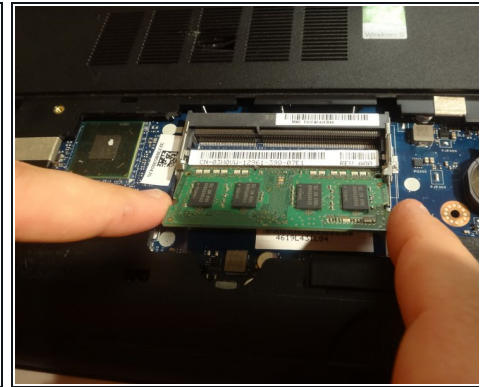
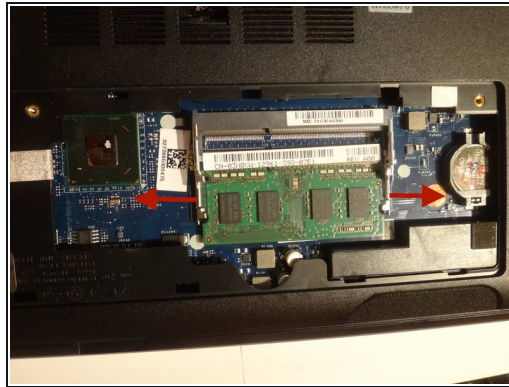
- Flip the laptop over.
- Slide the latches toward the outside of the laptop to unlock the battery.
- Lift the battery out of the laptop.

## Step 2 — Remove access door



- Loosen the two screws attaching the access door to the laptop body
- Using a spudger, pry open the access door from the laptop
- Using your fingers, open and remove the access door from the laptop, exposing the memory cards underneath.

## Step 3 — Memory Card Removal/Replacement



- To access the memory cards, push out the latches on the left and right of the memory cards
- To remove the memory card, pull it out of the tray with the latches still stretched out
- Insert a new memory card in to the memory card tray, depressing until side latches engage with a click.

To reassemble your device, follow these instructions in reverse order.