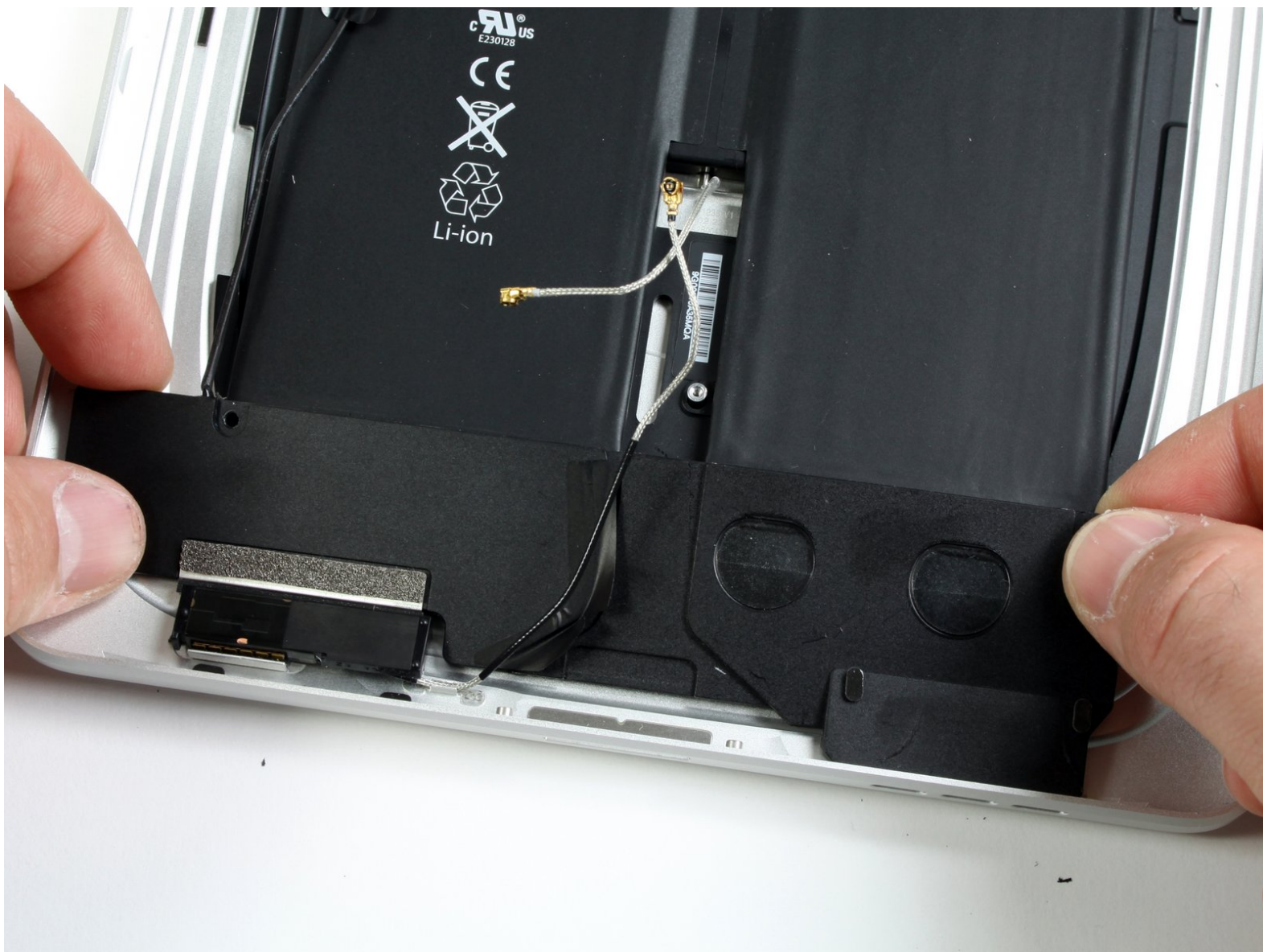




iPad 3G Speakers Replacement

Replace blown out speakers on your iPad 3G.

Written By: Andrew Bookholt



INTRODUCTION

Use this guide to replace a set of blown-out speakers.



TOOLS:

- [Metal Spudger](#) (1)
 - [Paper Clip](#) (1)
 - [iFixit Opening Tools](#) (1)
 - [T5 Torx Screwdriver](#) (1)
-

Step 1 — Display Assembly




- If your display glass is cracked, keep further breakage contained and prevent bodily harm during your repair by taping the glass.
- Lay overlapping strips of clear packing tape over the iPad's display until the whole face is covered.
 - ⓘ This will keep glass shards contained and provide structural integrity when prying and lifting the display.
- Do your best to follow the rest of the guide as described. However, once the glass is broken, it will likely continue to crack as you work, and you may need to use a metal prying tool to scoop the glass out.

 Wear safety glasses to protect your eyes, and be careful not to damage the LCD screen.

Step 2



-  The iPad shown in the photos may look slightly different from your iPad, but the procedure is the same.
- Insert a metal spudger between the right edge of the display assembly and the rear panel assembly.
 - Rotate the spudger away from you to release the tabs along the top edge of the display.

Step 3



- Insert a second metal spudger between the top edge of the display assembly and the rear panel assembly to keep the tabs from snapping back into place.
- Pry the display assembly away from the rear panel.

Step 4



- Continue prying the display assembly away from the rear panel along the bottom and left edges of the iPad.

⚠ Use extreme caution as you approach the top edge of the iPad. The digitizer ribbon cable is located near the edge of the rear panel and can easily be damaged.

Step 5



- Lift the display assembly away from the rear panel assembly by its bottom edge.

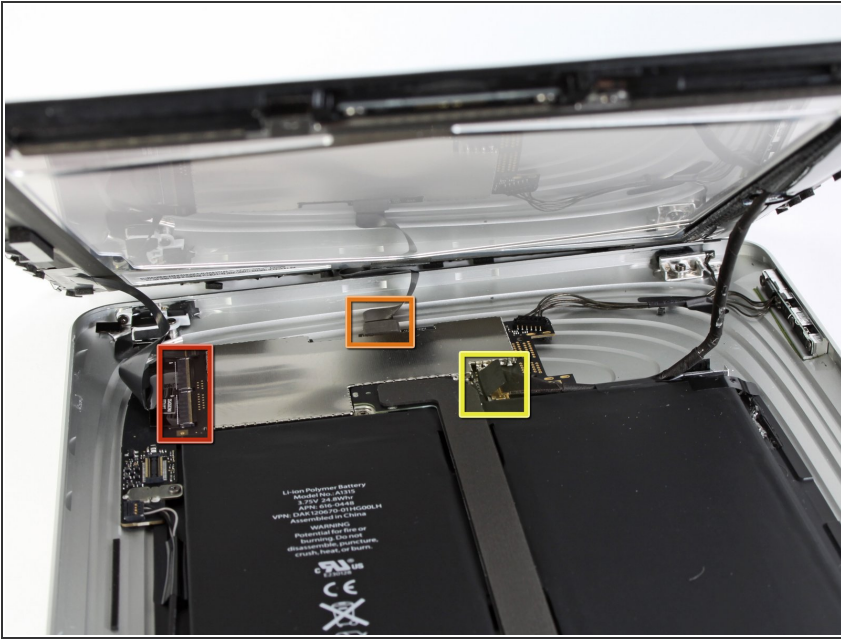
⚠ Do not excessively lift the display assembly off the rest of the iPad, as a fragile antenna cable with very little slack still connects the two components.

Step 6



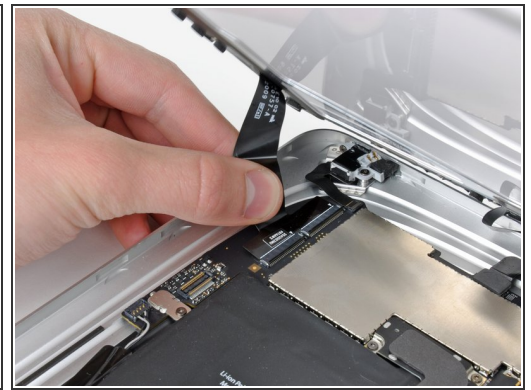
- Use the flat end of a spudger to pry the antenna connector closest to the bottom of the iPad up off its socket on the communications board.

Step 7



- In the following steps, you will disconnect the three cables attaching the display assembly to the logic board. The cables are for the following components:
 - Digitizer
 - Ambient Light Sensor
 - Display Data Cable

Step 8



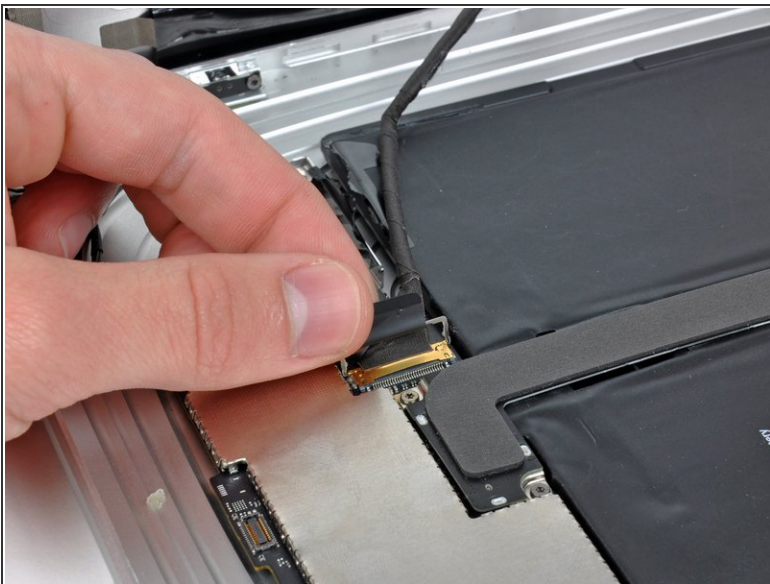
- Use the edge of an iPod opening tool to flip up the retaining flaps holding the digitizer ribbon cables in their sockets on the logic board.
- ⚠ Be sure you are flipping up the retaining flap, **not** the socket itself.
- Pull the digitizer ribbon cables straight out of their sockets.


Step 9



- Use an iPod opening tool to remove the ambient light sensor connector from its socket by gently prying upward.

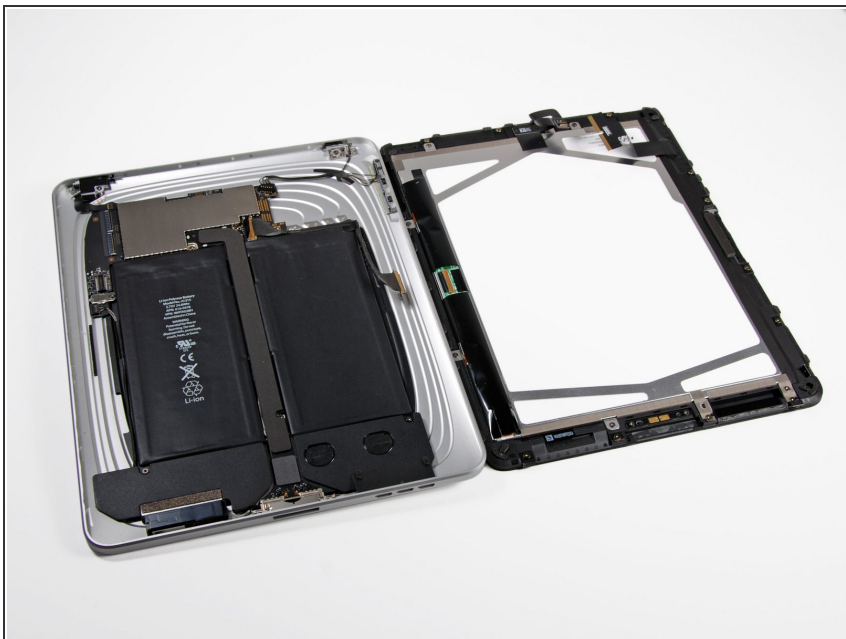
Step 10



- Disconnect the display data cable from the main board by flipping up the metal retainer by its black plastic pull tab.
- Pull the cable connector away from its socket.
-  Pull the connector parallel to the face of the logic board.

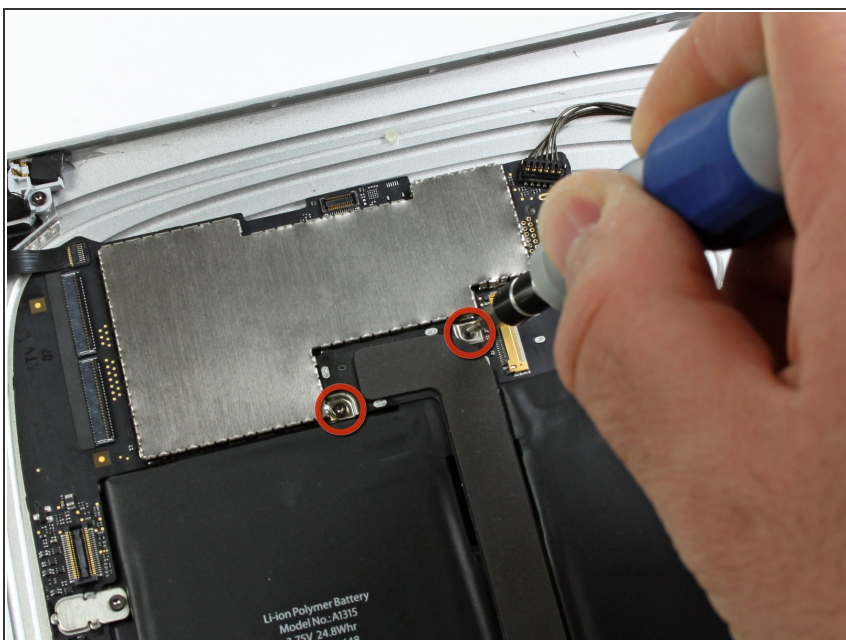
This document was generated on 2020-11-24 12:24:33 AM (MST).

Step 11



- Remove the display assembly from the rear panel assembly.

Step 12 — Dock Connector Cable



- Remove the two 4.56 mm T5 Torx screws securing the dock connector cable to the main board.

Step 13



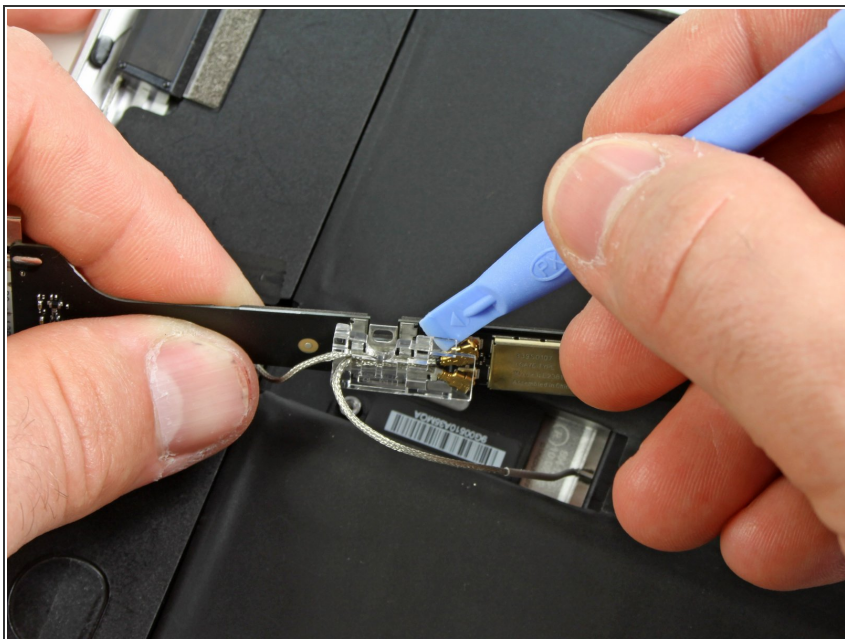
- Remove the single 2.84 mm T5 Torx screw connecting the dock connector cable to the rear case assembly.

Step 14



- Remove the two 2.84 mm T5 Torx screws securing the dock connector cable to the rear panel assembly.

Step 15



- Carefully remove the plastic cover over the WiFi/Bluetooth board and dock connector cable using an iPod opening tool.

Step 16



- Pry the Wi-Fi and Bluetooth antennas up off their respective sockets on the Wi-Fi/Bluetooth board.

Step 17



- Remove the dock connector cable from the rear panel assembly.

Step 18 — Speakers



- Use the edge of an iPod opening tool to pry the SIM board connector up off its socket on the logic board.

Step 19



- Fold the SIM cable back for clearance to access the speaker connector.
- Use the edge of an iPod opening tool to disconnect the speaker connector from the logic board.
- ⓘ Pry up from beneath the wires.

Step 20



- Remove the two 2.84 mm T5 Torx screws securing the speaker assembly to the rear panel assembly.
- ⓘ If necessary, remove the tape covering the Wi-Fi cables.

Step 21



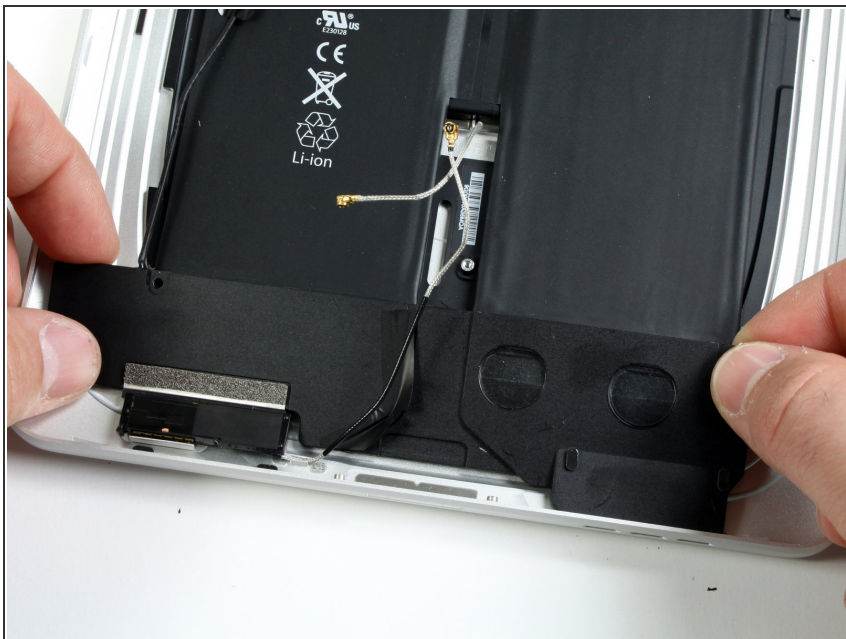
- De-route the Wi-Fi antenna through its channel in the speaker assembly.

Step 22



- Deroute the speaker cable connector from under the black sticker attached to the left side of the rear panel assembly.

Step 23



- Lift the speaker assembly and push it forward until the ports clear the bottom side of the rear panel assembly.

To reassemble your device, follow these instructions in reverse order.