

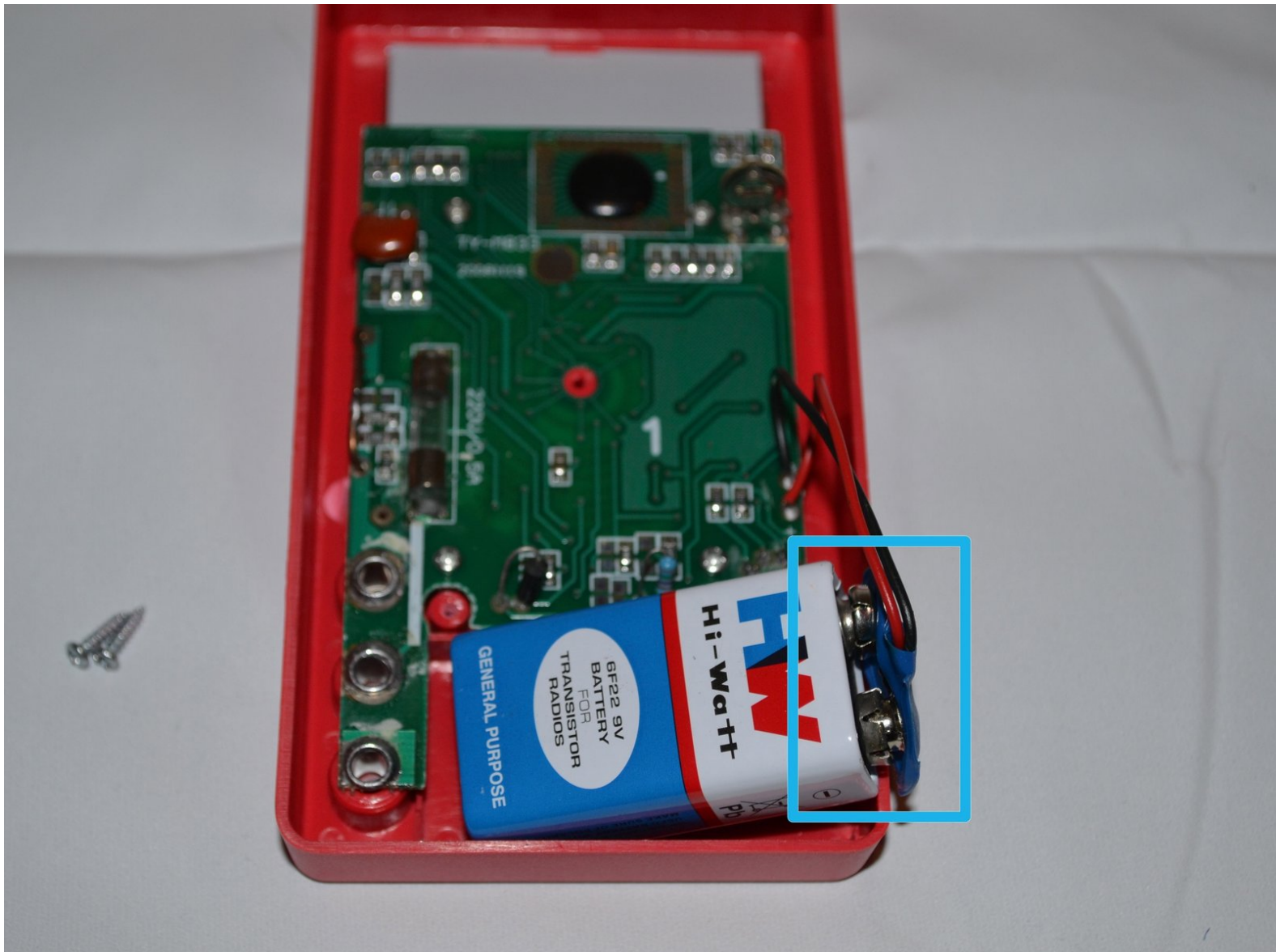


Cen-Tech Seven Function Digital Multimeter

Battery Replacement

This guide will show how to remove the old battery.

Written By: Anna Kihm



INTRODUCTION

If the device is unable to turn on, it may be necessary to replace the battery. This guide will show how to remove the old battery, and how to replace it with a new one.



TOOLS:

- [Phillips #0 Screwdriver](#) (1)
- [Flathead 3/32" or 2.5 mm Screwdriver](#) (1)



PARTS:

- [6F22 9V Battery for Transistor Radio](#) (1)

Step 1 — Position Device



- Place the meter face down, and the back panel and screws can be seen.

Step 2 — Remove Back Panel Screws



- Unscrew the two 9mm screws on the back panel using a #0 Phillips screwdriver.

Step 3 — Remove Back Panel



- Remove the back panel of the device by lifting upward.
- Remove the battery from the meter before continuing.

Step 4 — Unscrew Motherboard



- Remove the four 7mm Phillips screws holding the circuit board in place.

Step 5 — Remove Motherboard



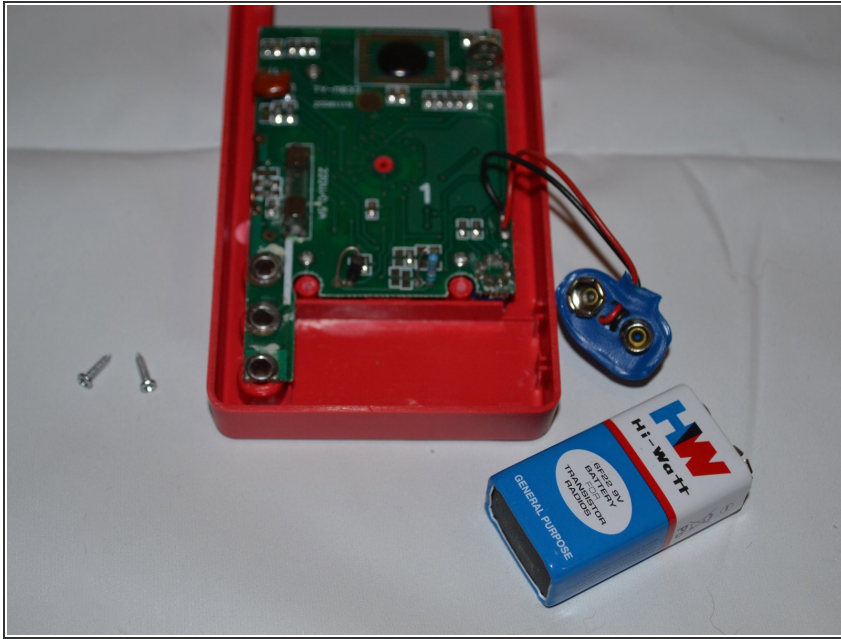
- Gently lift the circuit board away from the device casing.
- ⓘ Remove the battery after removing the back cover to reduce the chances of short-circuiting the circuit board.

Step 6 — Locate Battery Attachment



- After removing the outer casing and motherboard of the device, locate the attachment site of the battery to the motherboard.

Step 7 — Remove Battery



- Unsnap the battery from its attachment plate.
- ★ When replacing the battery with a new one, be sure to properly align battery heads (positive and negative) with snaps. The positive battery head should be connected to the negative wire, and vice versa.

To reassemble your device, follow these instructions in reverse order.