



PlayStation 3 Slim Motherboard Assembly Replacement

Written By: Andrew Bookholt





TOOLS:

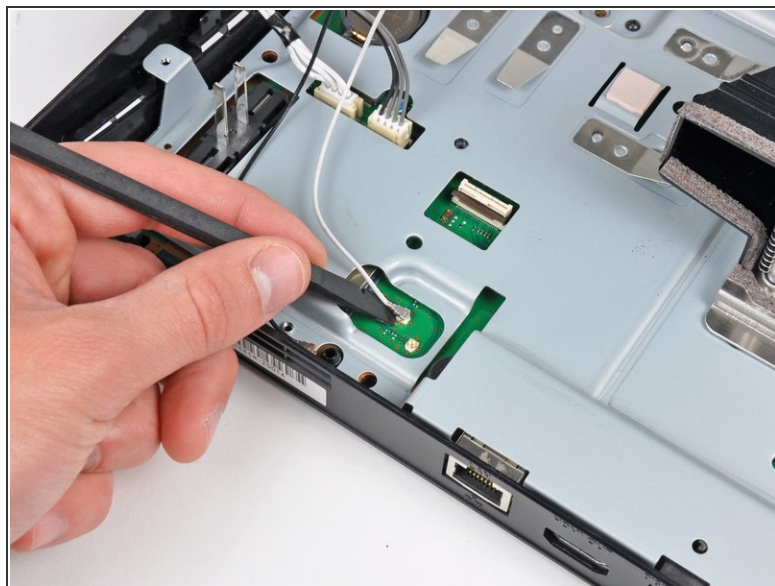
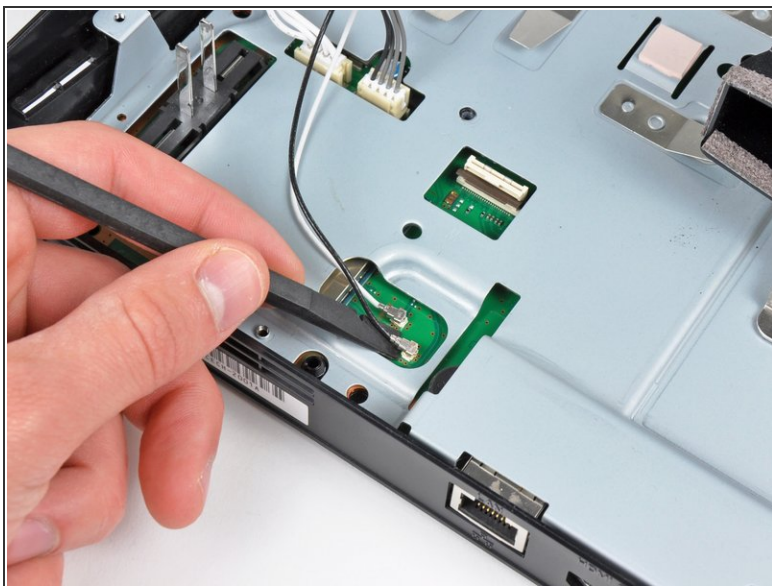
- [Phillips #00 Screwdriver](#) (1)
- [Spudger](#) (1)

Step 1 — Motherboard Assembly



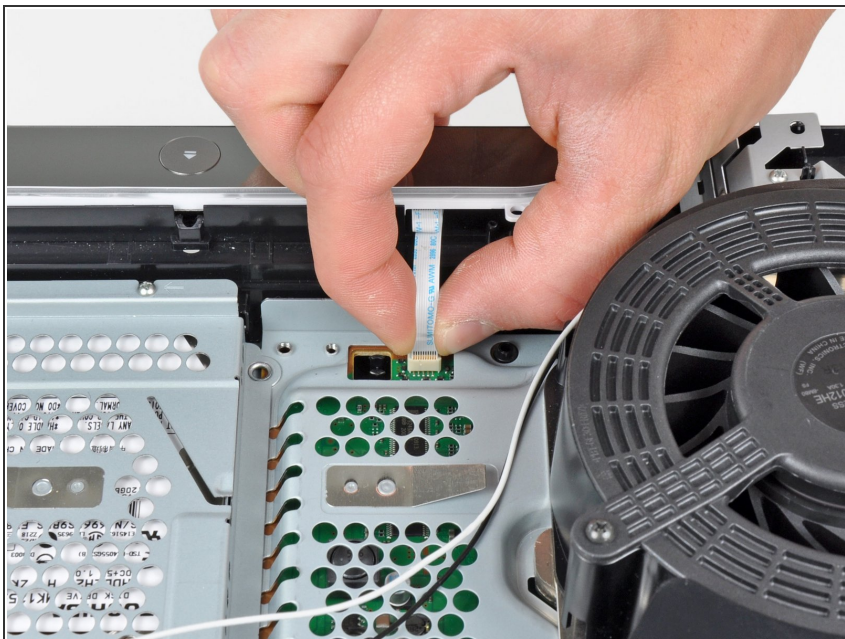
- Pull the AC-In cables upward to remove the AC inlet from the lower case.

Step 2



- Use the flat end of a spudger to pry both antenna connectors up from their sockets on the motherboard.

Step 3



- Pull the control board ribbon cable up and out of its socket on the motherboard.
- Remove the control board.

Step 4



- Turn the PS3 over and lay it on its backside.
- Use the flat edge of a metal spudger to pop up the small access door on the bottom cover near the front of the PS3.
- Remove the blue Phillips screw hidden under the access door.

Step 5



- Slide the hard drive bay cover toward the right side of the lower case, then pull it away from the front edge to remove it from the PS3.

Step 6



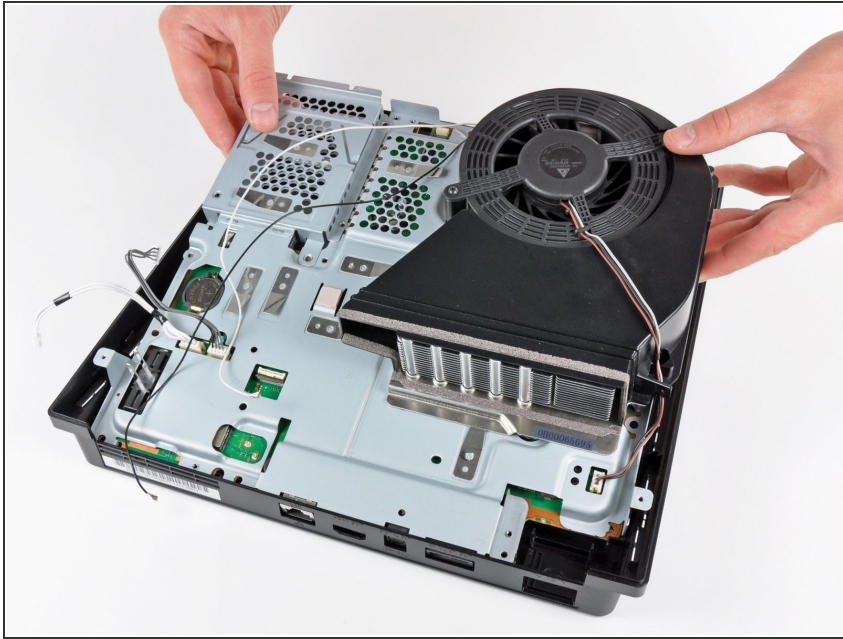
- Using its attached metal handle, pull the hard drive out of its bay.

Step 7




- Remove the following five screws securing the motherboard assembly to the lower case:
 - Two silver 6 mm Phillips
 - Three black 8 mm Phillips

Step 8



- Lift the motherboard assembly from its front edge and remove it from the lower case, minding the antenna cable still attached to the lower case.

 Be careful not to bend the metal antenna bodies as you lift the motherboard assembly.

To reassemble your device, follow these instructions in reverse order.