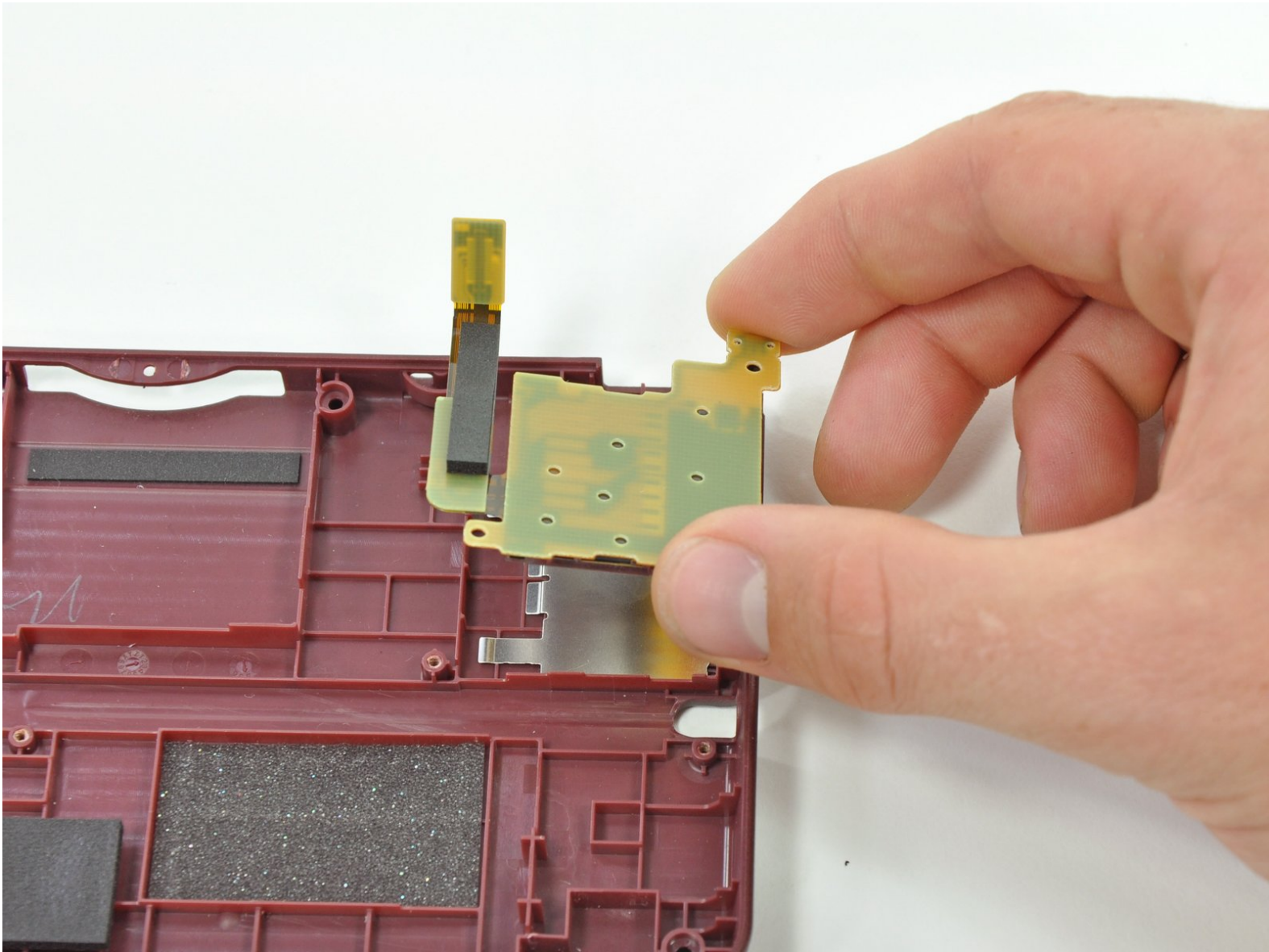




Nintendo DSi XL SD Board Replacement

Replace or repair a faulty SD board.

Written By: Brett Hartt



INTRODUCTION

Give your DSi a memory boost by repairing your SD board.



TOOLS:

- [Phillips #00 Screwdriver](#) (1)
- [Push Pin](#) (1)
- [Spudger](#) (1)



PARTS:

- [Nintendo DSi XL SD Board](#) (1)

Step 1 — Battery



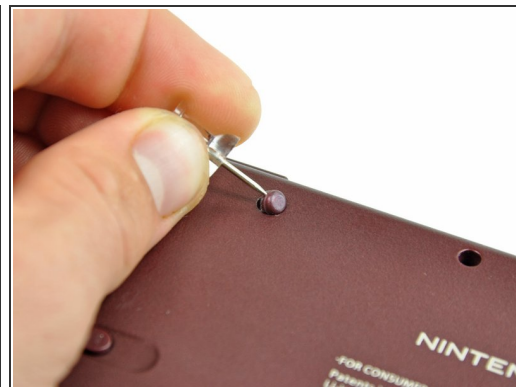
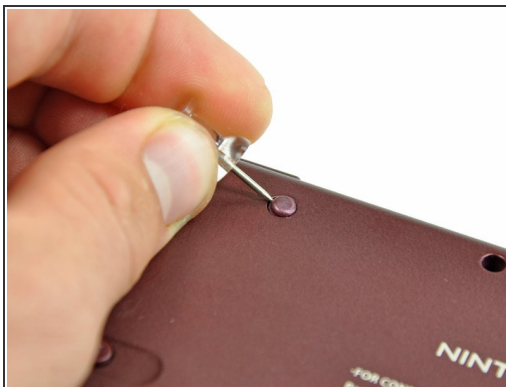
- Remove the two Phillips screws securing the battery cover to the back of the handheld console.
- Lift the battery cover off the back of the DSi XL.

Step 2



- Lift the battery from the DSi XL.

Step 3 — Lower Case



- Remove the four rubber screw covers on the lower case by prying them up with a push pin.


Step 4



- Remove the following seven Phillips screws that secure the lower case to the rest of the DSi XL:
 - Four silver 5.3 mm screws
 - Two black 5.3 mm screws
 - One black 2.5 mm screw

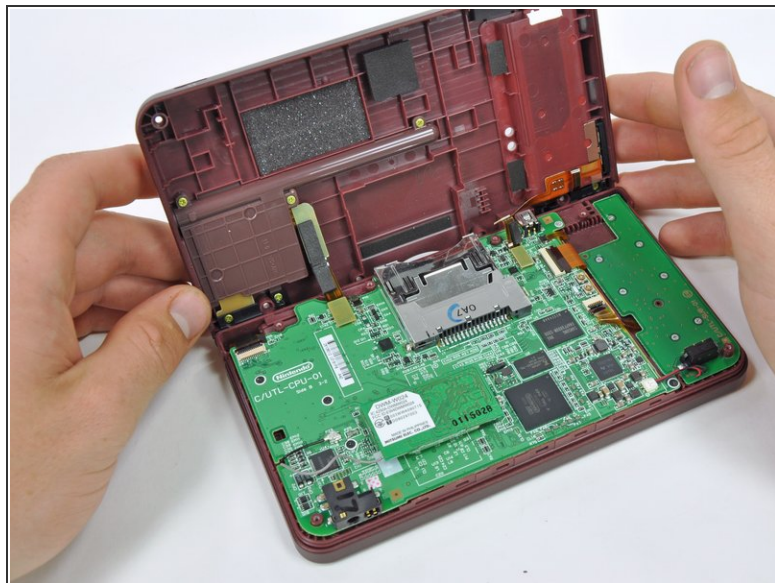
Step 5



 Turn the DSi XL over, and open the display.

- Insert a spudger between the upper and lower case at the bottom left corner of the DSi.
- Slide the spudger along the bottom edge of the upper case to release the latches securing the upper case to the lower case.

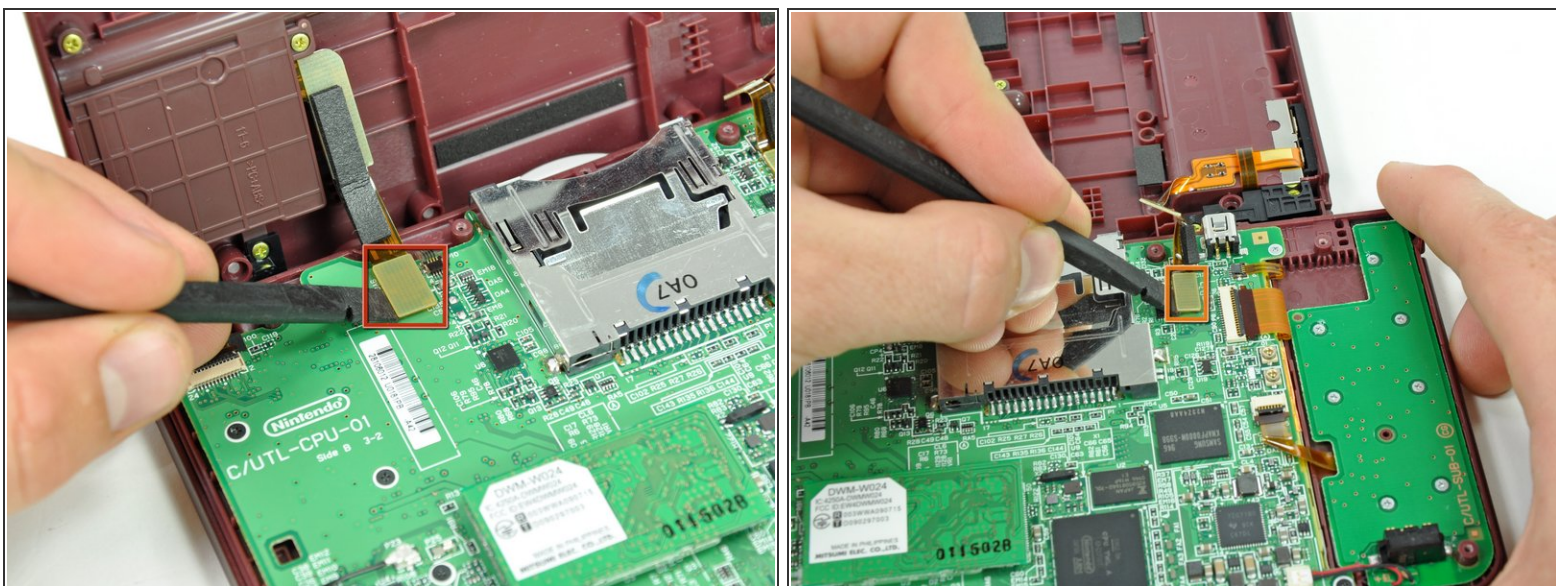
Step 6



- i** Close the display and turn the DSi XL over.

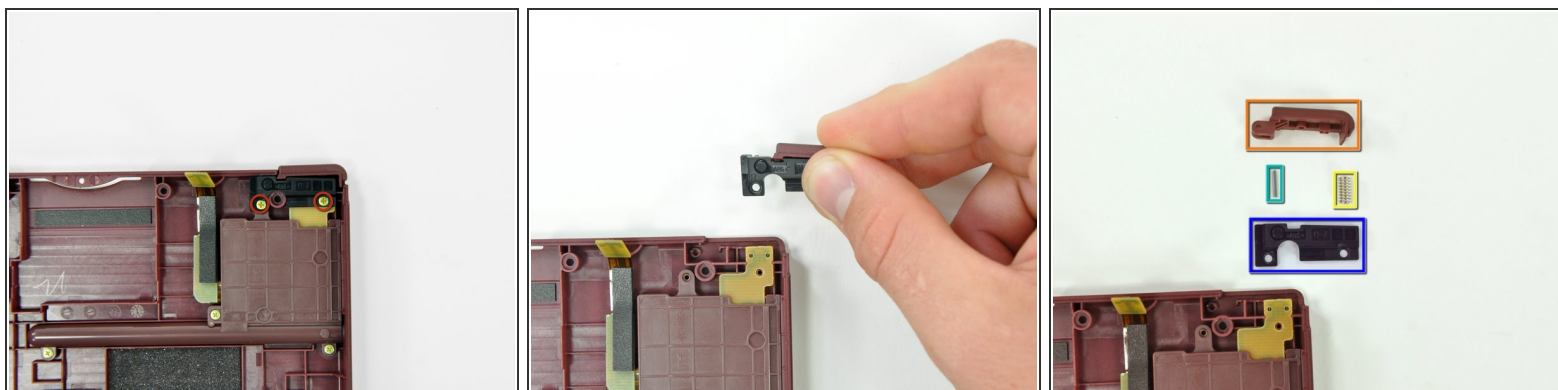
 - Lift the lower case from the front edge.
 - Rotate the lower case away from the DSi.
- i** The lower case cannot be completely removed yet, since it is still connected to the motherboard.

Step 7



- Using a spudger, pry the SD card/right shoulder button connector off its socket.
- Pry the volume button/left shoulder button connector off its socket on the motherboard with a spudger.

Step 8 — Right Shoulder Button



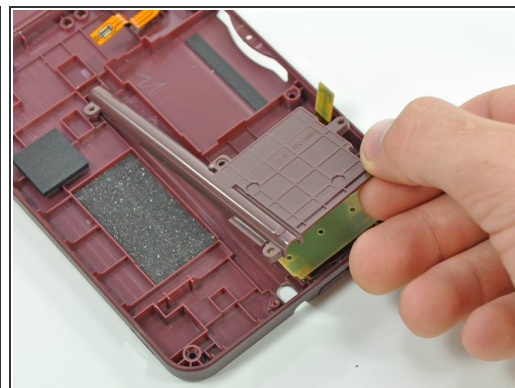
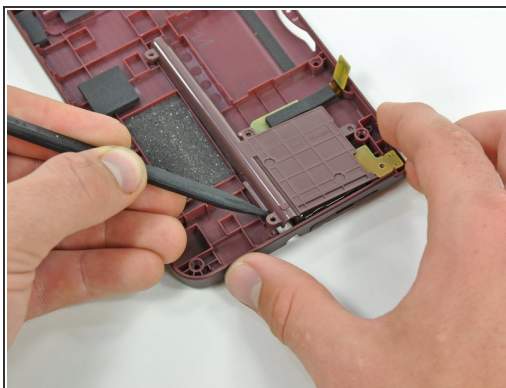
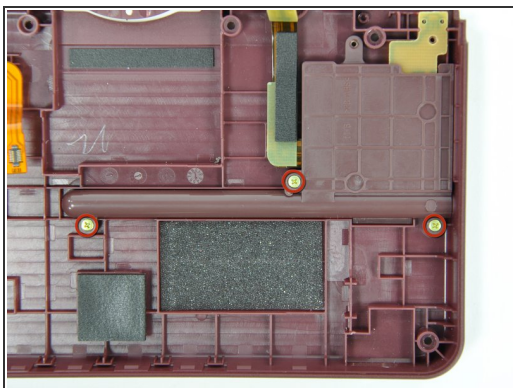
- Remove the two gold 4.0 mm Phillips screws securing the right shoulder button assembly to the back case.
- Lift the right shoulder button assembly from the back case.
- The components of the right shoulder button assembly:
 - Right shoulder button
 - Shoulder button spring
 - Retaining pin
 - Right shoulder button holding panel

Step 9 — Stylus Housing



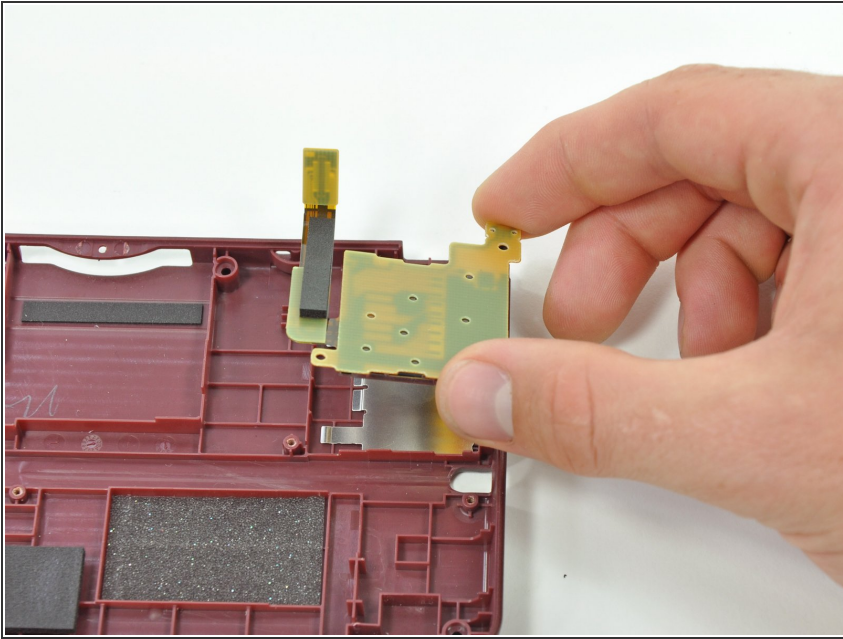
- Remove the stylus from its housing on the right side of the DSi XL.

Step 10



- Remove the three 4 mm gold Phillips screws securing the stylus housing to the lower case.
- Using a spudger, lift the stylus housing off the lower case.
- Remove the stylus housing from the handheld console.

Step 11 — SD Board



- Lift the SD board off the lower case.

To reassemble your device, follow these instructions in reverse order.