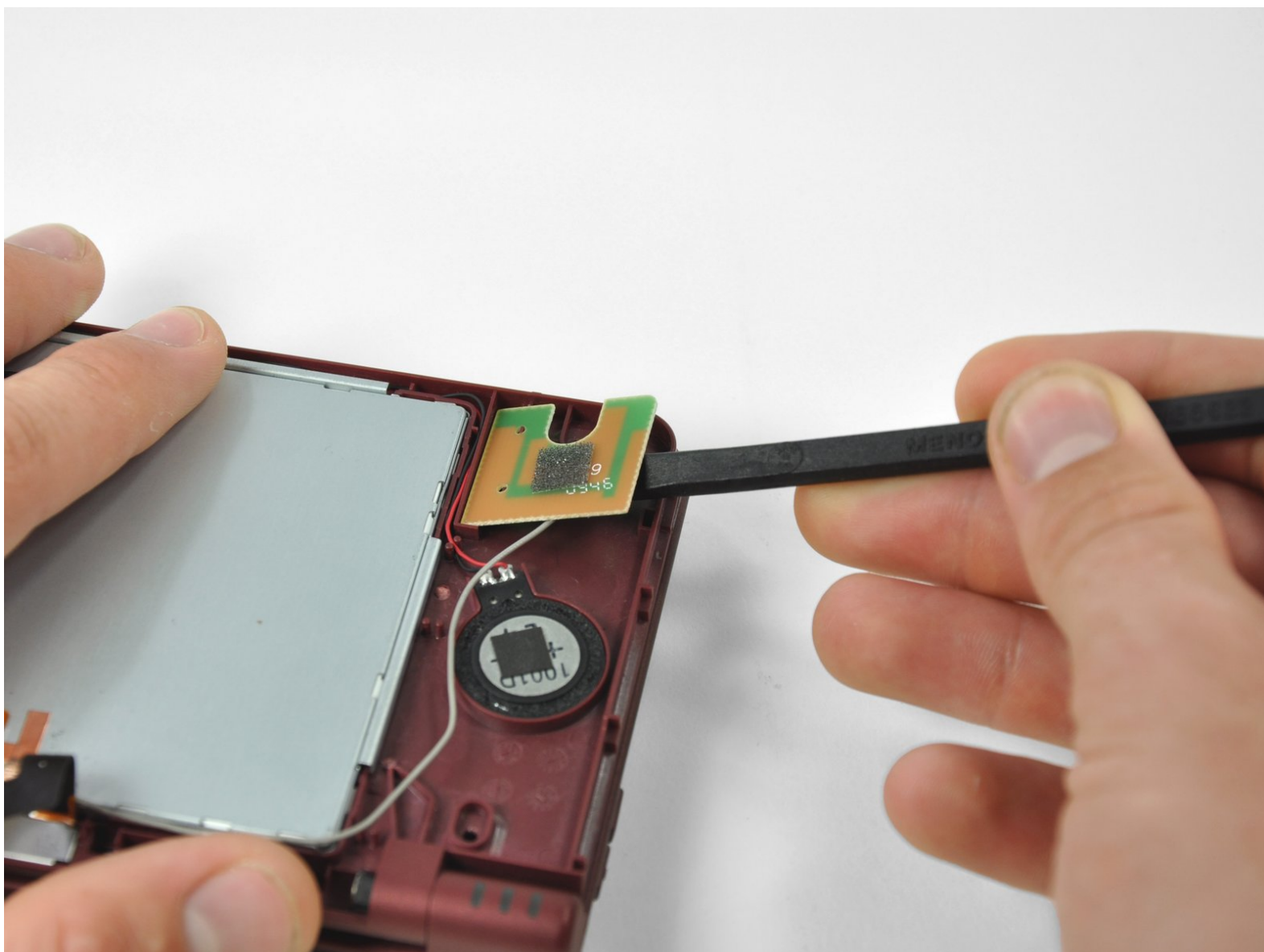




# Nintendo DSi XL Speakers Replacement

Right speaker replacement.

Written By: Matthew Newsom



# INTRODUCTION

Replace your DSi XL's speakers so you can hear Mario yell "Mamma mia" as clear as ever.



## TOOLS:

- [Phillips #00 Screwdriver](#) (1)
- [Push Pin](#) (1)
- [Solder](#) (1)
- [Soldering Iron](#) (1)
- [Spudger](#) (1)



## PARTS:

- [Nintendo DSi XL Speaker](#) (1)
- [Nintendo DSi DSi XL Right Speaker](#) (1)
- [Nintendo DSi DSi XL Left Speaker](#) (1)

## Step 1 — Battery



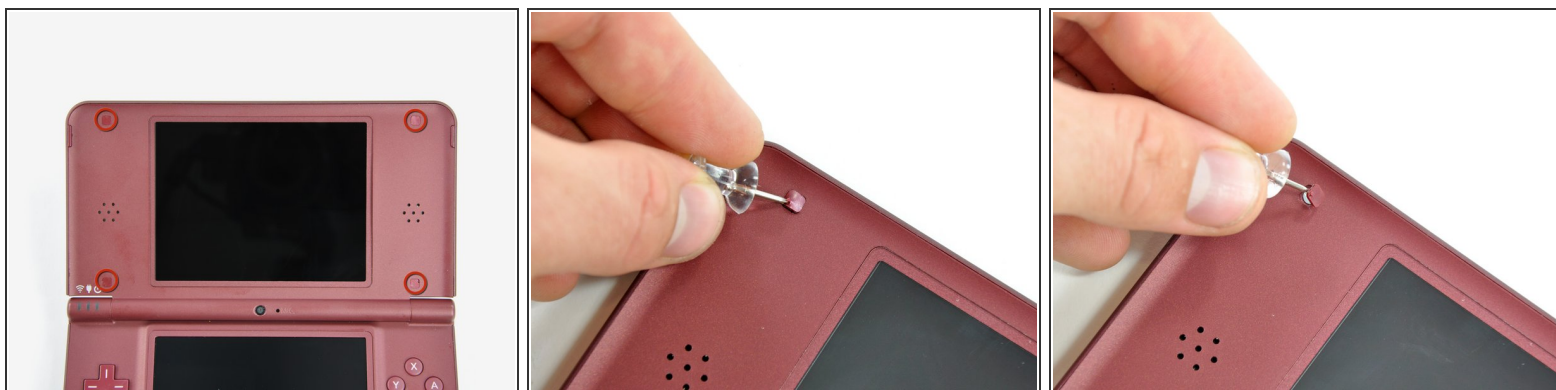
- Remove the two Phillips screws securing the battery cover to the back of the handheld console.
- Lift the battery cover off the back of the DSi XL.

## Step 2



- Lift the battery from the DSi XL.

### Step 3 — Rear Bezel



- Use a push pin to remove the four plastic screw covers on the front bezel.

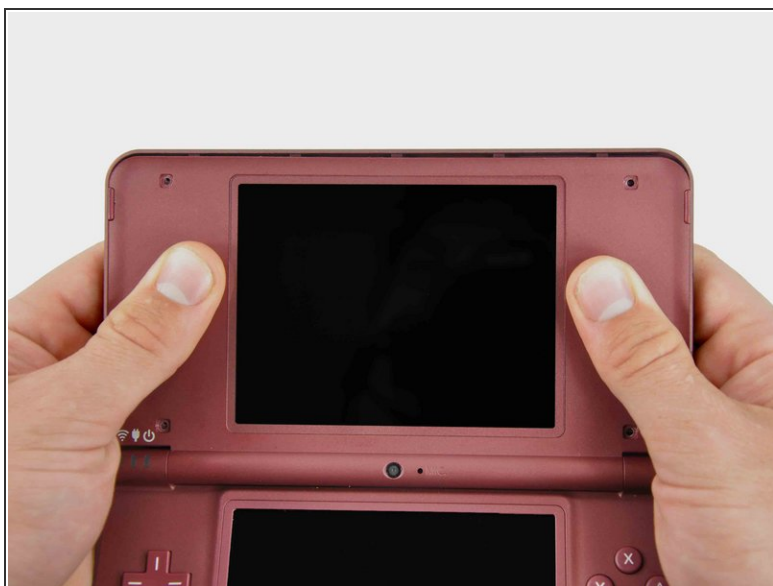
### Step 4



- Remove four Phillips screws securing the front bezel to the rear bezel.



## Step 5



- Using two hands, gently slide the rear bezel upwards.
- ⓘ The rear bezel will move only about 2 mm.

## Step 6



- Insert a spudger into the gap between the front and rear bezel
- Rotate the spudger away from the DSi XL, prying the two bezels apart.

## Step 7



- In the same manner as described above, continue prying along the top edge of the front and rear bezels.

## Step 8



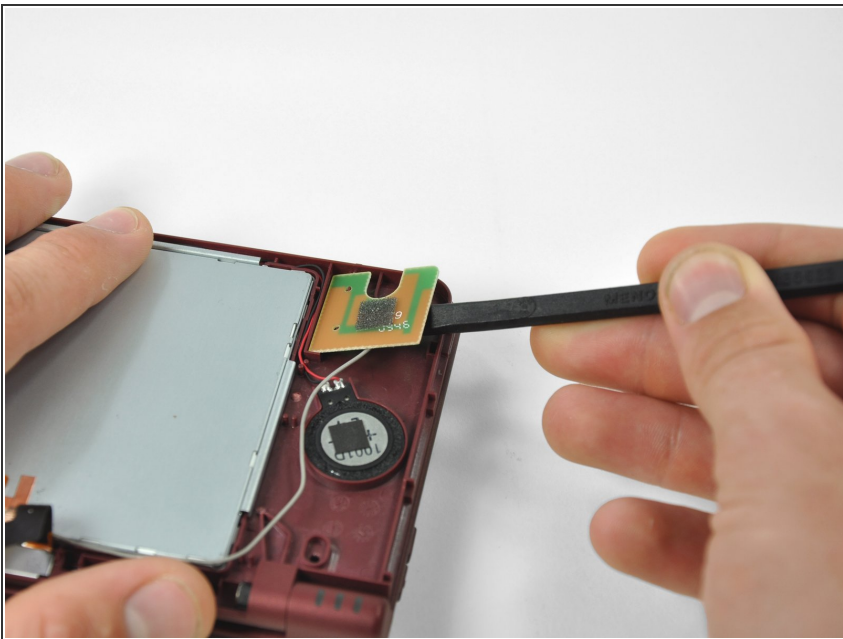
- Separate the rear bezel from the front bezel.
- ⚠ Do not attempt to completely remove the rear bezel yet. It is still attached to the front bezel by the rear-facing camera.

## Step 9



- Use the flat end of a spudger to pry the rear camera off the rear bezel.
- Remove the rear bezel.

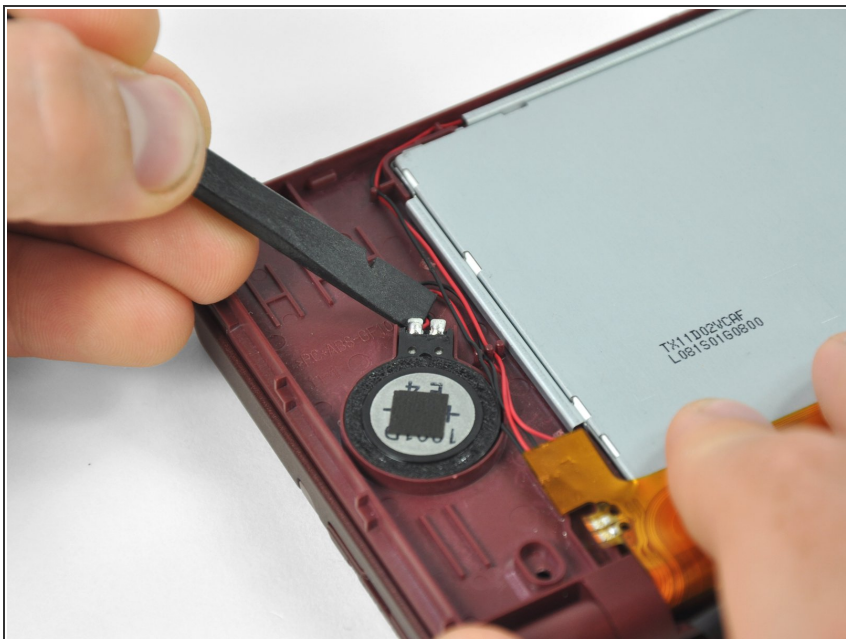
## Step 10 — Speakers



- Use a spudger to lift the antenna from the front bezel to make room for lifting the speaker cables up.

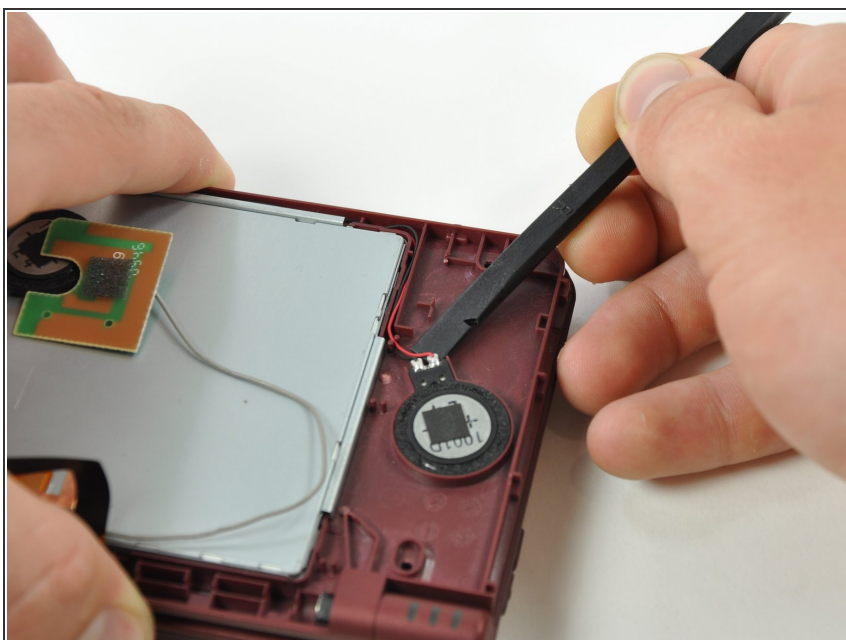


## Step 11



- Use a spudger to lift the right speaker from its housing in the front bezel.

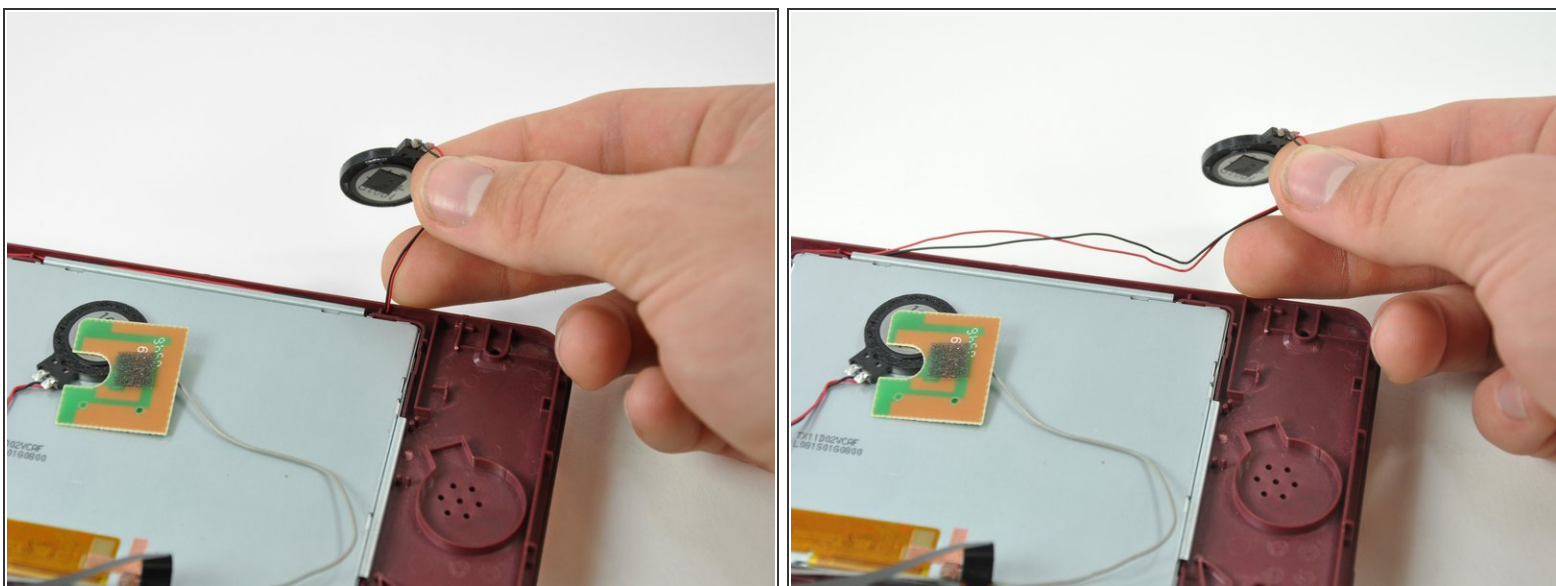
## Step 12



- Use a spudger to lift the left speaker from its housing in the front bezel.



## Step 13



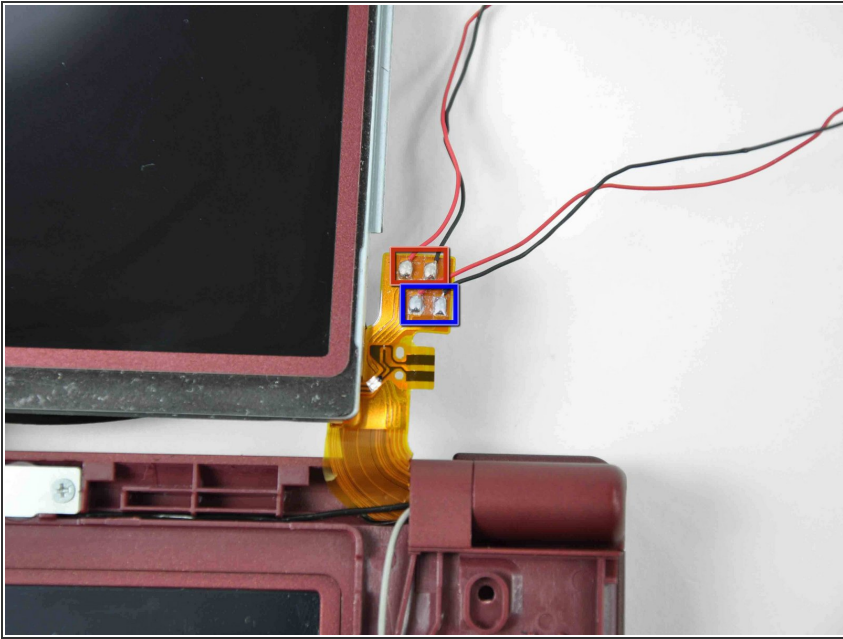
- De-route the left speaker cable along the top edge of the upper LCD.

## Step 14



- Open the display slightly, and lift the LCD out of the front bezel.
  - Lay the LCD down next to the DSi XL.
- ⚠ Don't attempt to remove the LCD, it is still attached to the front bezel via the display data ribbon cable.

## Step 15



- Desolder the two solder joints to separate the speakers from the LCD.
  - Right Speaker
  - Left Speaker
- i** For both speakers, the red wire (positive lead) is soldered to the left contact. The black wire (negative lead) is soldered to the right contact point.
- ★** For detailed instructions on how to solder this type of connection, see our guide for [repairing soldered connections](#).

To reassemble your device, follow these instructions in reverse order.