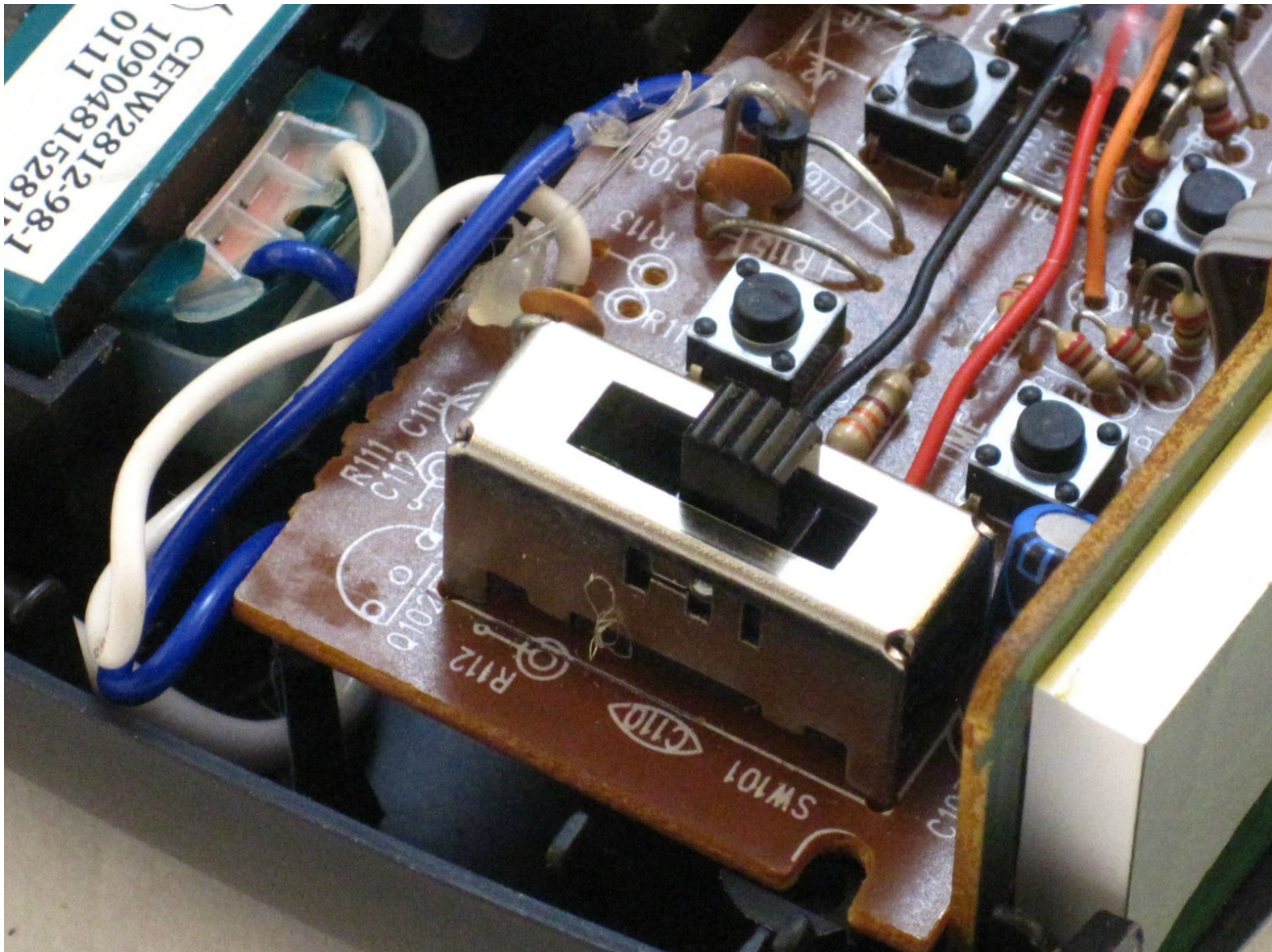




# GE 7-4836B Alarm Clock AM-FM Radio On/Off/Music/Alarm Switch Replacement

This guide will show you how to disassemble the On/Off/Music/Alarm four-position switch so you can replace it.

Written By: Dominick Giguere



This document was generated on 2020-11-28 04:04:10 AM (MST).

---

## INTRODUCTION

This guide involves further disassembly of the clock radio and will require using several different tools and techniques, including using a soldering iron. If you need help on how to use a soldering iron, consult this iFixit guide: [How To Solder and Desolder Connections](#)

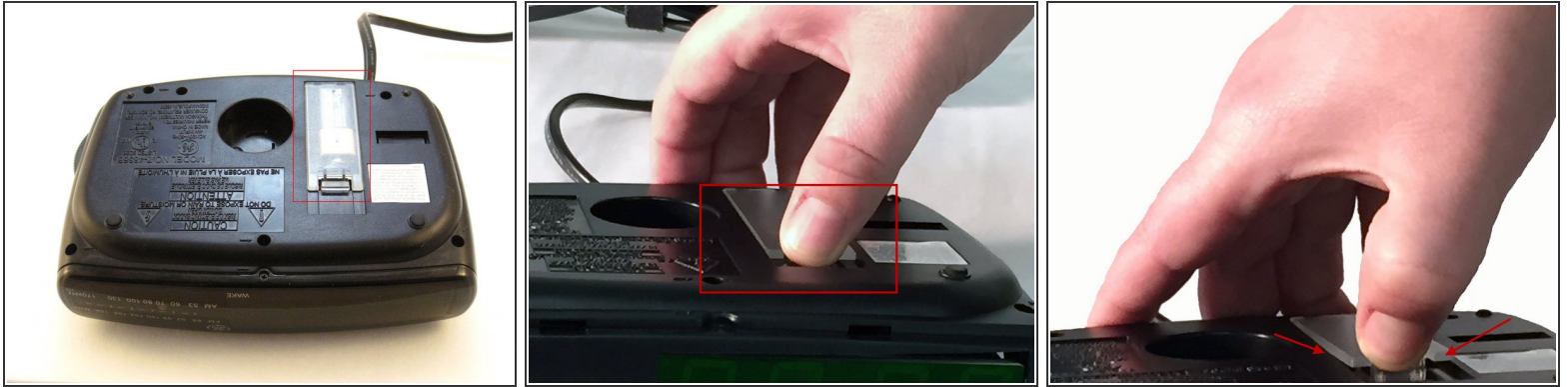


### TOOLS:

- [Phillips #00 Screwdriver](#) (1)
  - [Spudger](#) (1)
  - [Portable Soldering Iron](#) (1)
  - [Flush Wire Cutters](#) (1)
-

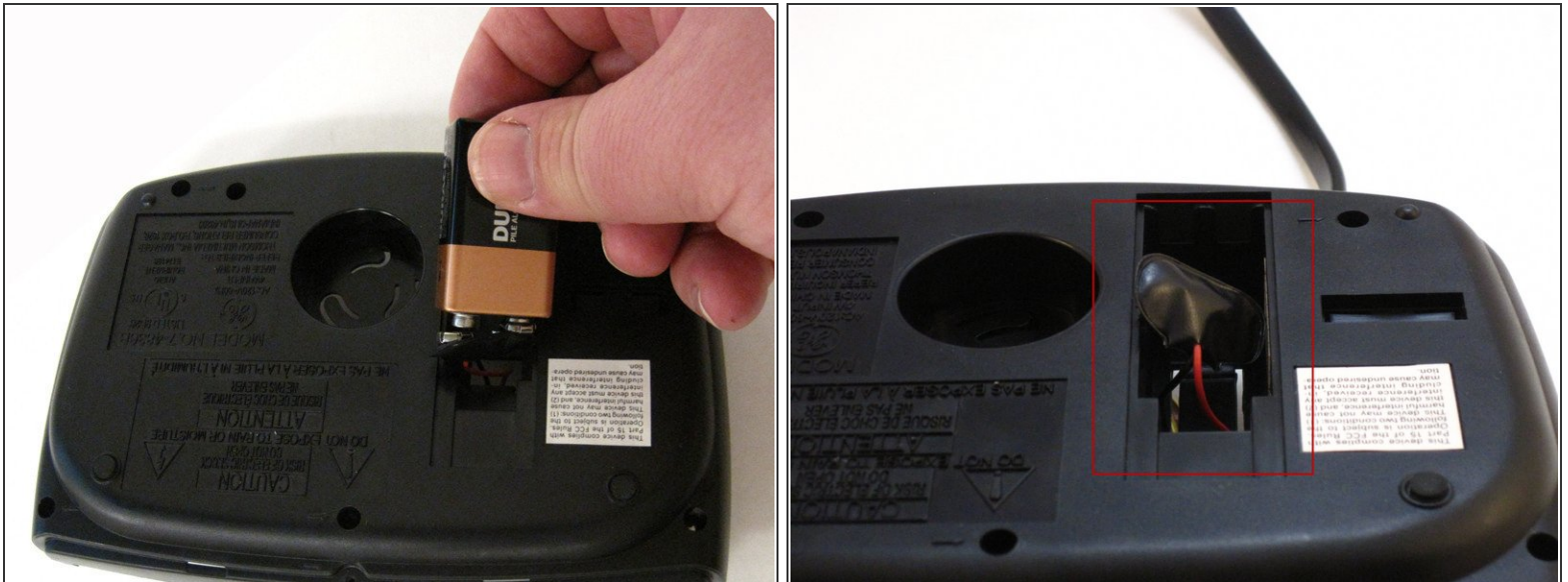


## Step 1 — Battery Compartment Cover



- Find the battery compartment on the bottom of the clock radio.
- Using your thumb, push the compartment cover latch toward the battery.
- With the latch pushed in, pull the compartment cover upward to remove it..

## Step 2 — Battery



- Lift the battery from the compartment.
- Pull the battery up and gently disconnect it from the battery connector.

## Step 3 — Screws



- Using a Phillips #00 Screwdriver, unscrew the six 12mm screws from around the bottom of the clock radio.

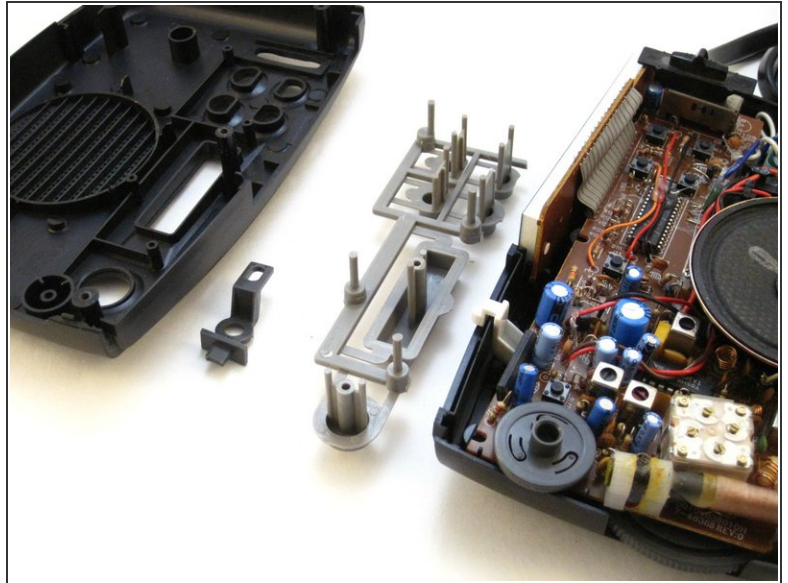
## Step 4 — LCD Cover



- Gently pull the liquid crystal display (LCD) cover off.

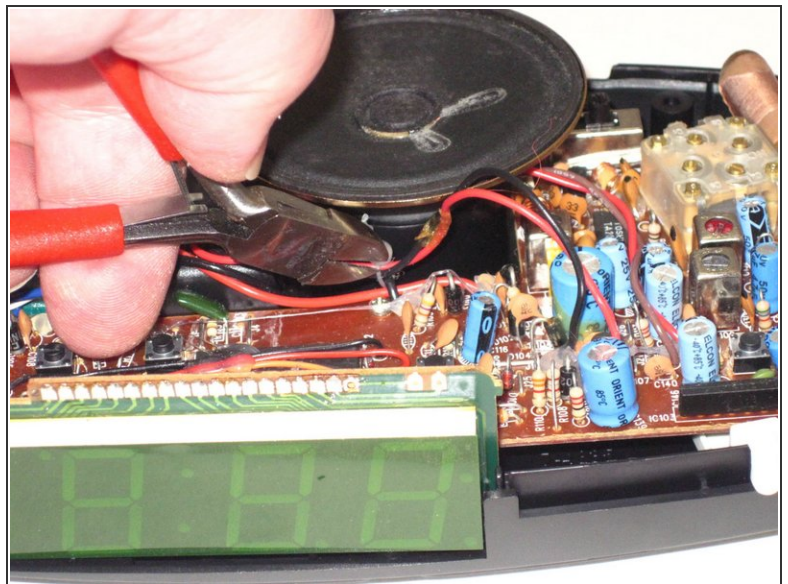
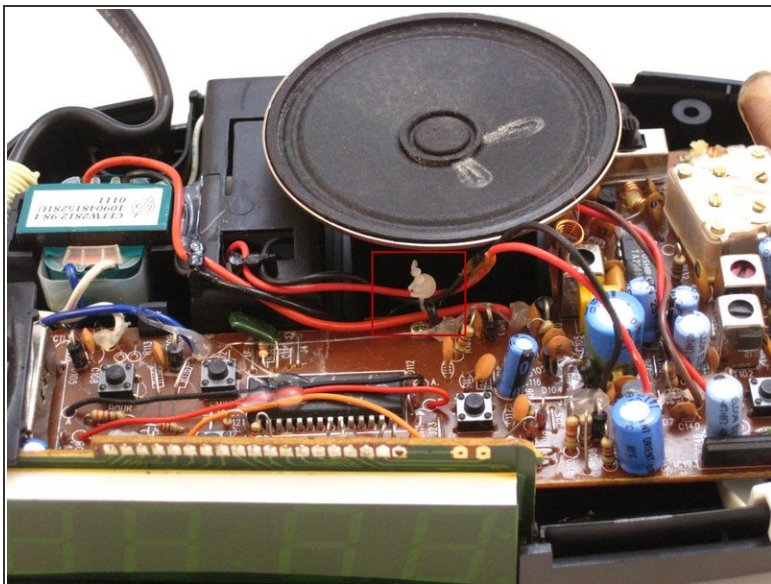


## Step 5 — Clock Radio



- Lift the top off. Two gray, plastic internal pieces will fall out when you do this; set them aside.

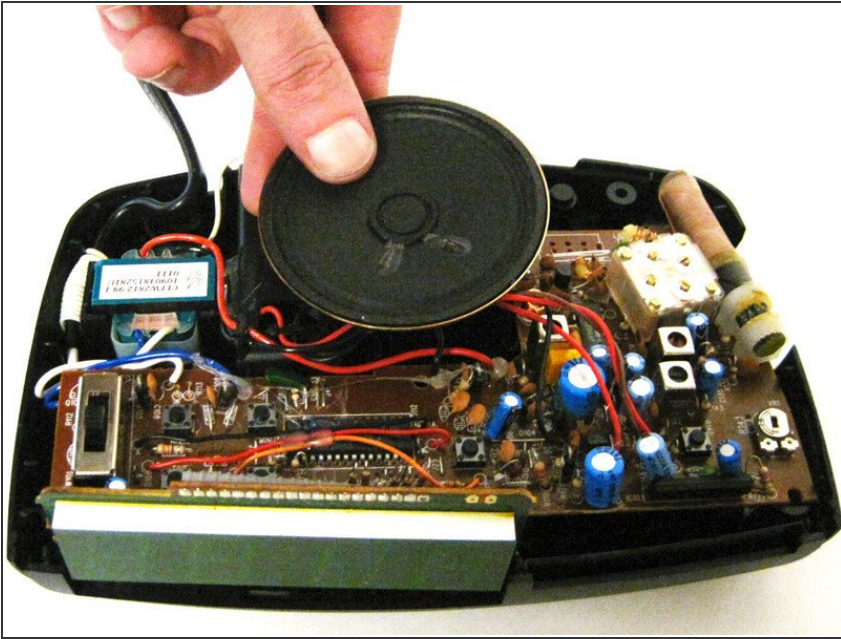
## Step 6 — Battery Wires Wire Tie



- Using the wire cutters, carefully cut the plastic wire tie.

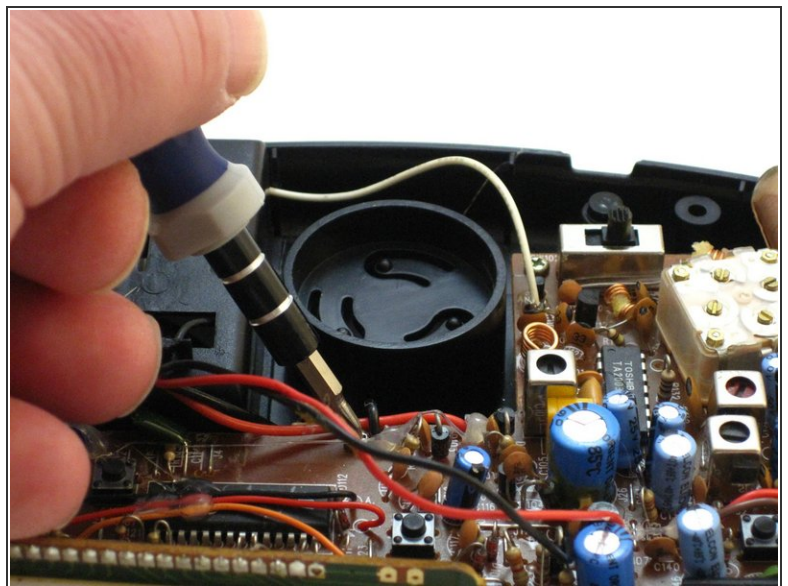
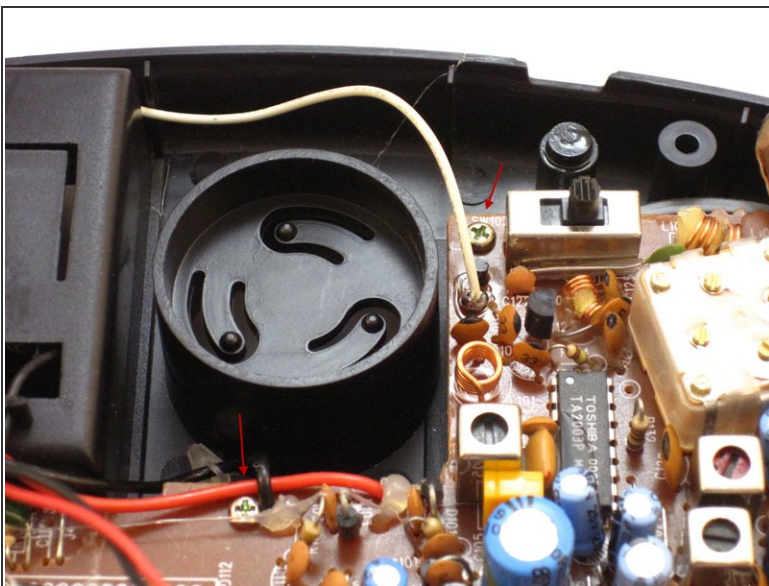


## Step 7 — Speaker



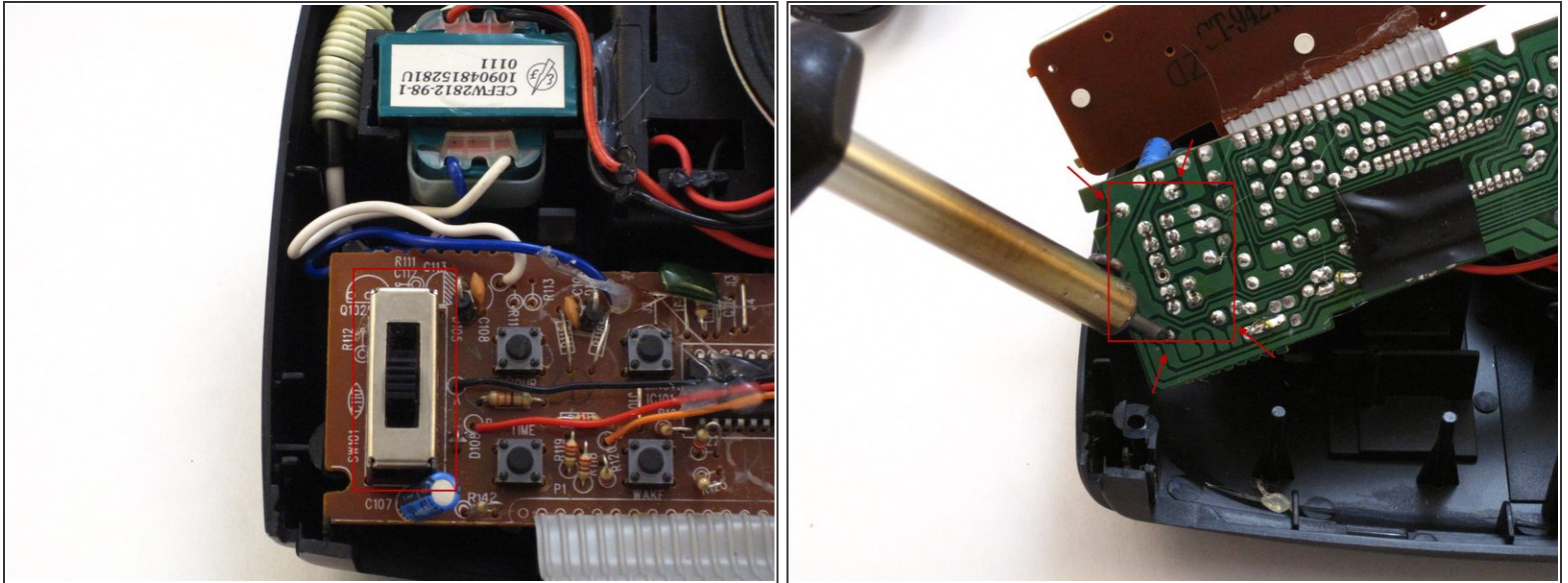
- Grip the speaker.
- Lift the speaker from the holder.

## Step 8 — Two Screws



- Locate the two 6mm screws on the PCB.
- Using a Phillips #0 Screwdriver, unscrew the two 6mm screws from the PCB.

## Step 9 — Four-Position Switch



- Locate the four-position switch marked SW101. On the underside of the PCB, there will be 4 soldered pins as pointed at in the picture.
- Apply the hot soldering iron to those four soldered pins to disconnect the four-position switch.

To reassemble your device, follow these instructions in reverse order.