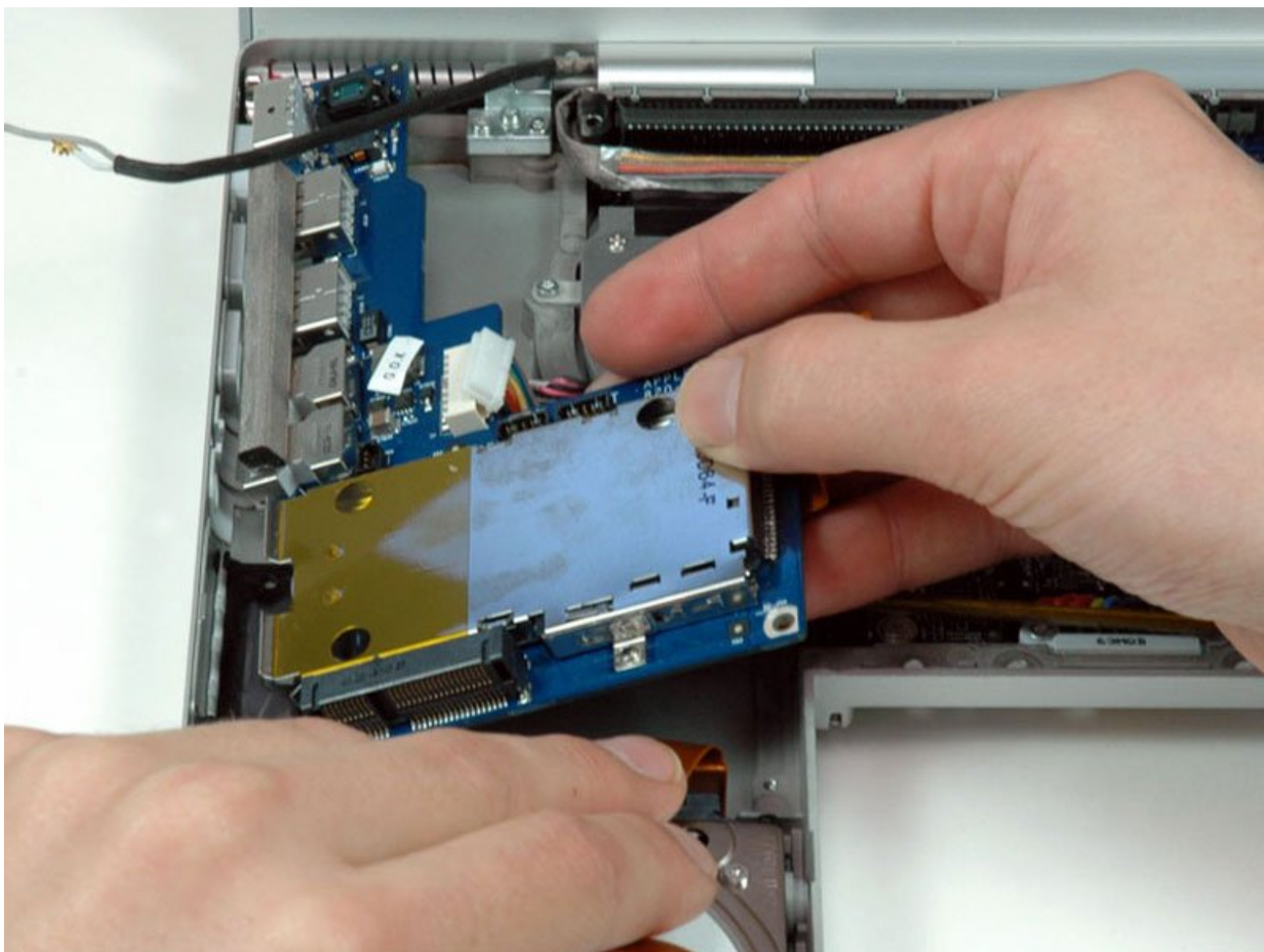




MacBook Pro 17" Models A1151 A1212 A1229 and A1261 Left I/O Board Replacement

Written By: iRobot



INTRODUCTION

Provides power to the machine and includes all ports on the left side of the machine.



TOOLS:

- [Phillips #00 Screwdriver](#) (1)
- [Spudger](#) (1)
- [T6 Torx Screwdriver](#) (1)



PARTS:

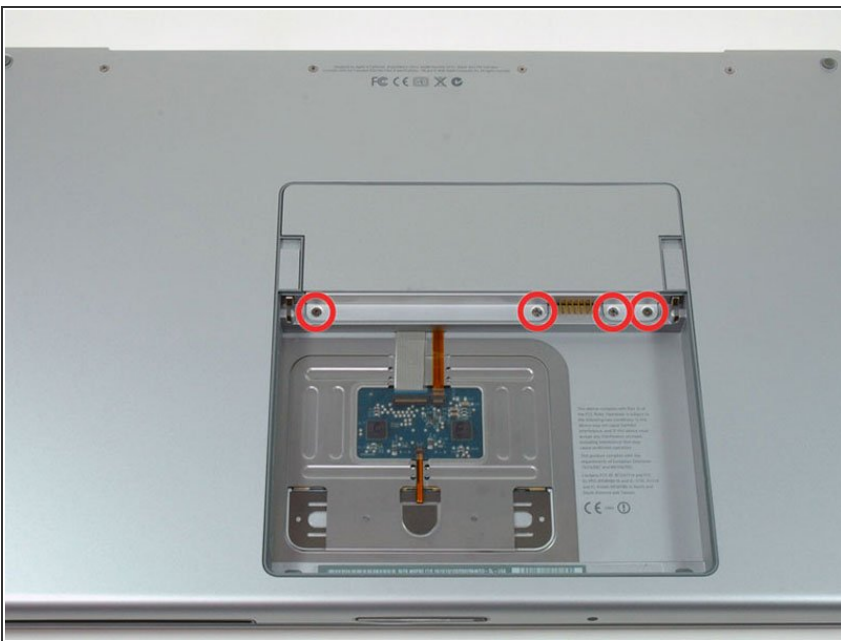
- [MacBook Pro 17" \(Model A1151\) Left I/O Board](#) (1)
- [MacBook Pro 17" \(Model A1212\) Left I/O Board](#) (1)
- [MacBook Pro 17" \(Model A1229\) Left I/O Board](#) (1)
- [MacBook Pro 17" \(Model A1261\) Left I/O Board](#) (1)

Step 1 — Battery



- Use your fingers to push both battery release tabs away from the battery and lift the battery out of the computer.

Step 2 — RAM Shield



- Remove the four identical Phillips 3.4 mm screws from the memory door. These screws have 4 mm

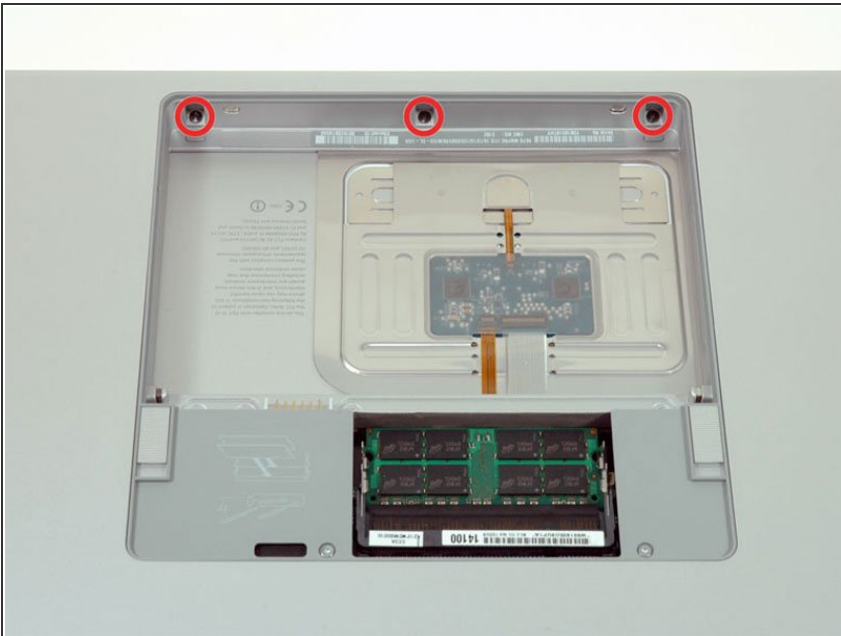
diameter heads rather than the 3 mm heads on the body screws.

Step 3



- Lift the memory door up enough to get a grip on it, and slide it toward you, pulling it away from the casing.

Step 4 — Upper Case



- Remove the three Phillips screws in the battery compartment near the latch. Apple was nice enough to tilt these screws at a slight angle to make them easier to remove. On the A1261 these screws have 4 mm diameter heads rather than the 3 mm heads on the body screws.

Step 5



- Remove the following six screws:
 - Two 14.5 mm T6 Torx screws on either side of the RAM slot.
 - Four 3.4 mm Phillips screws along the hinge.

Step 6



- Remove the four 3.4 mm Phillips screws on the port side of the computer.

Step 7



- Rotate the computer 90 degrees and remove the two Phillips screws from the rear of the computer.

Step 8



- Rotate the computer 90 degrees again and remove the four Phillips screws from the side of the computer.

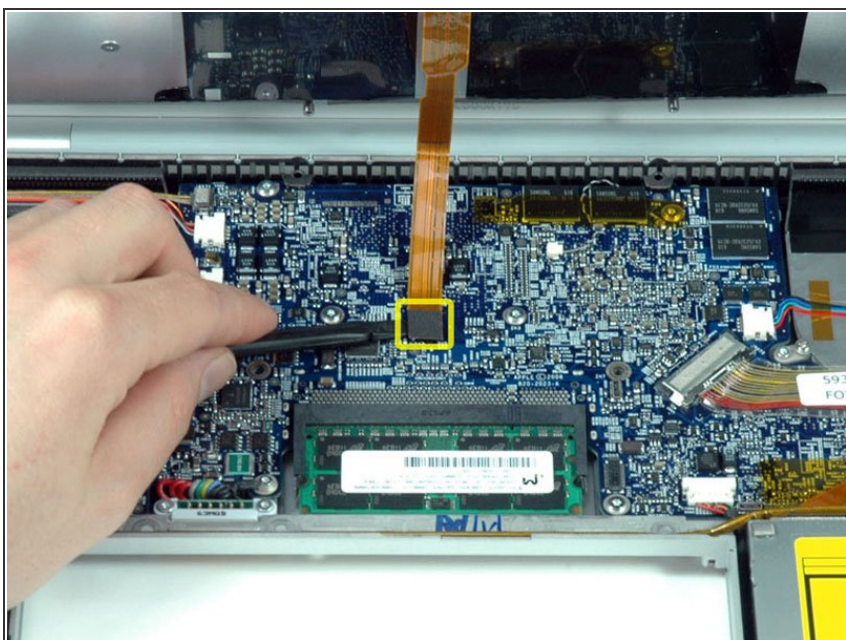
Step 9



⚠ Do not yank the upper case off quickly. The case is attached to the logic board via a ribbon cable.

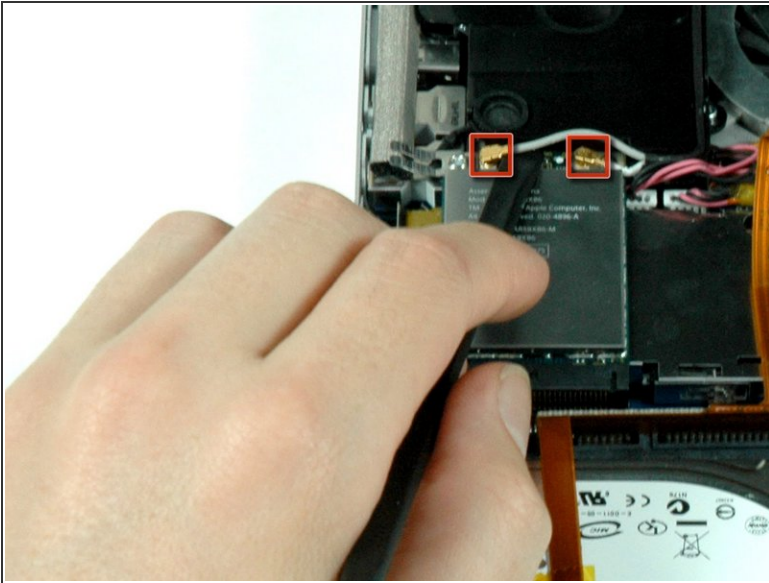
- Lift up the back of the case and work your fingers along the sides, freeing the case as you go. Once you have freed the sides, you may need to rock the case up and down to free the front of the upper case.

Step 10



- Disconnect the trackpad and keyboard ribbon cable from the logic board.
- Remove the upper case.

Step 11 — Left Speaker



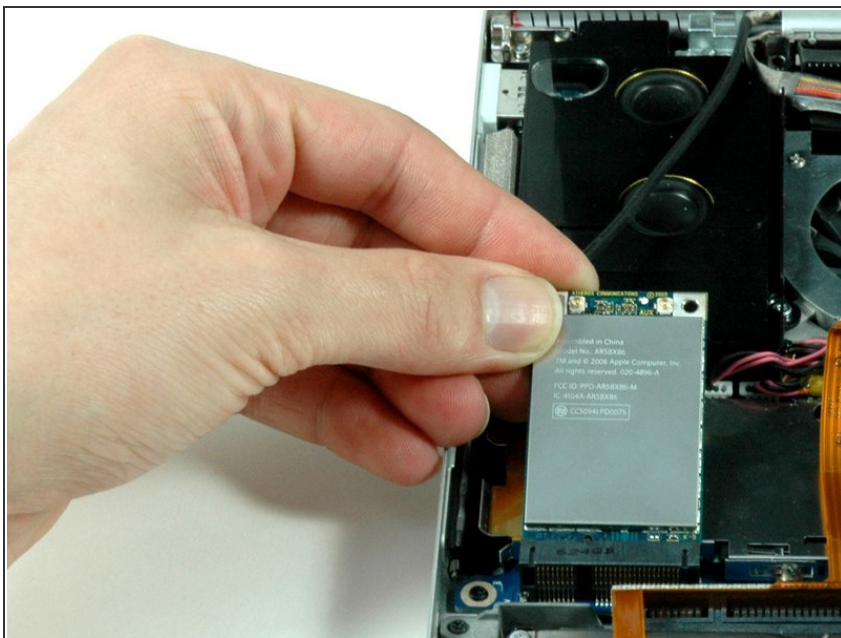
- Disconnect the two antenna cables attached to the AirPort Extreme card.
- ✦ The cable with the gray shielding attaches to the left side connector, while the cable with the white shielding attaches to the right side.
- ✦ For the A1261 model, The cable with the black shielding attaches to the left side connector, while the cable with the blue shielding attaches to the right side.
- ⓘ If you have a MacBook Pro 17" Model A1229 or A1212, there are three antenna cables attached to the AirPort Extreme card instead of two.

Step 12



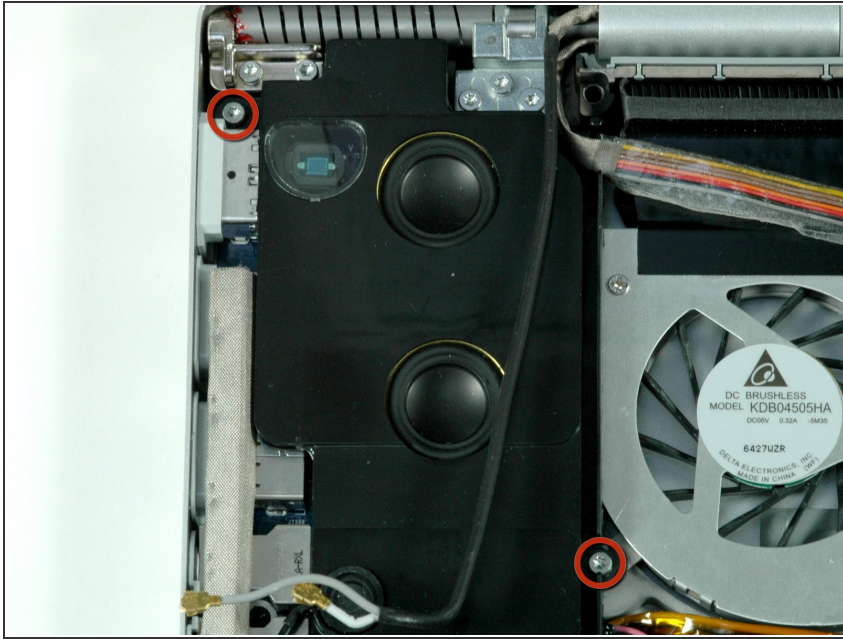
- Remove the single black 4.3 mm T6 Torx screw from the top right corner of the AirPort Extreme card.

Step 13



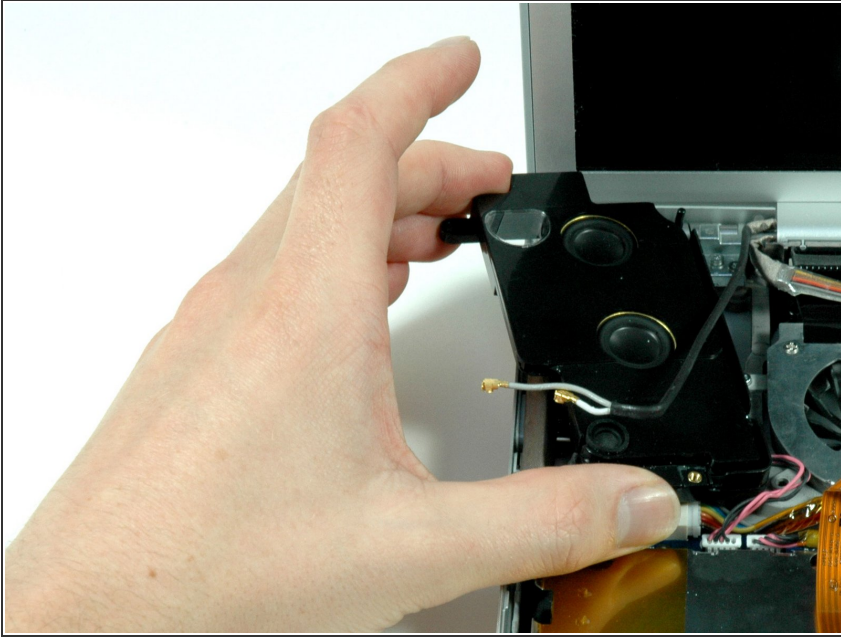
- Lift the AirPort Extreme card up and slide it out of its connector.

Step 14



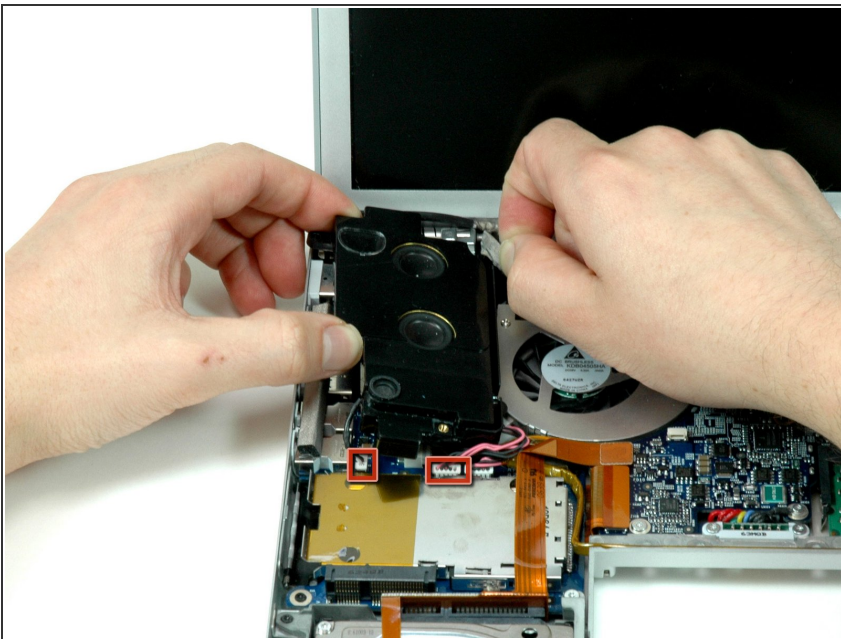
- Remove the two silver T6 Torx screws from the top left 8 mm and bottom right 10 mm corners of the left speaker assembly.
- ⓘ The magnet in the MagSafe connector may pull the upper screw towards it after the screw has been freed.

Step 15



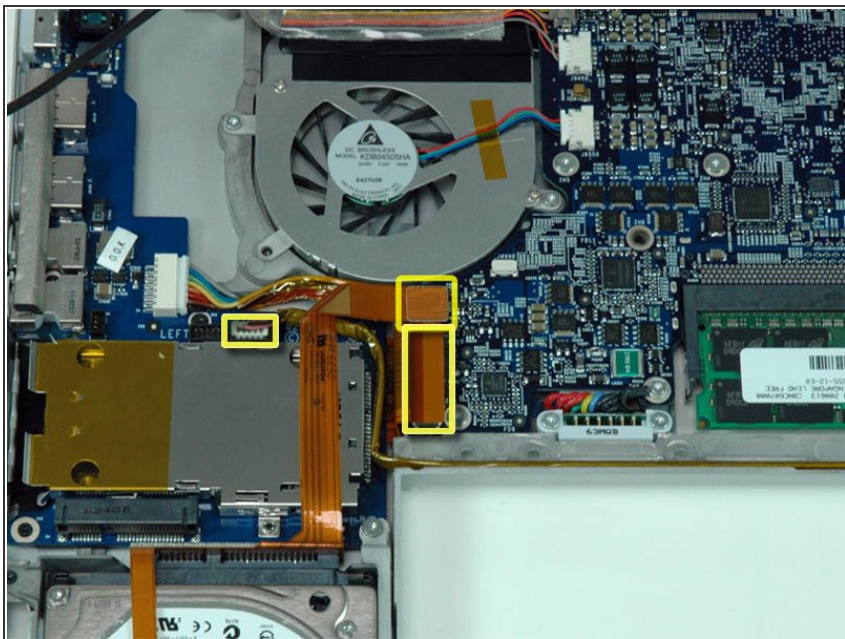
- Lift up on the left speaker assembly and rotate it slightly. It is not possible to entirely remove the speaker yet, as it is still connected to the left I/O board beneath.

Step 16



- Disconnect the two cables securing the left speaker to the I/O board.
- Lift the left speaker out of the upper case.

Step 17 — Left I/O Board



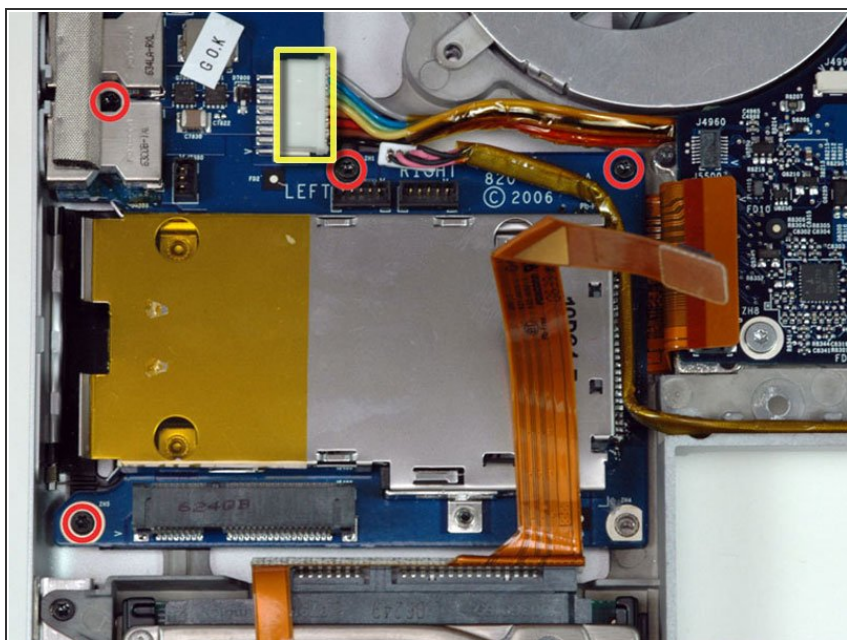
- Disconnect the hard drive ribbon cable and the left I/O board ribbon cable from the logic board.
- Disconnect the right speaker connector from the left I/O board.

Step 18



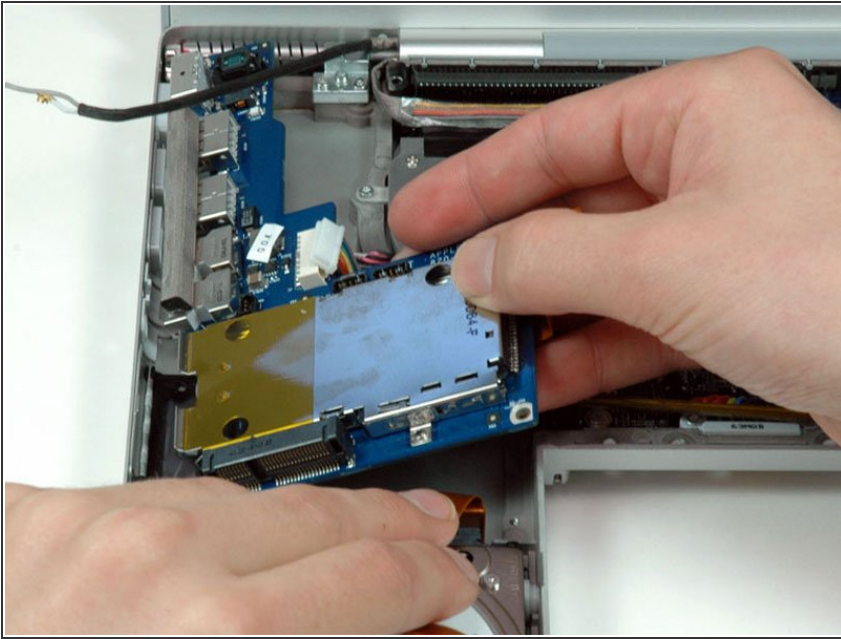
- Remove the two silver T6 Torx screws securing the gray metal retaining bracket to the right side of the hard drive. 8 mm upper and 10 mm lower.
- Lift the gray metal retaining bracket out of the computer.

Step 19



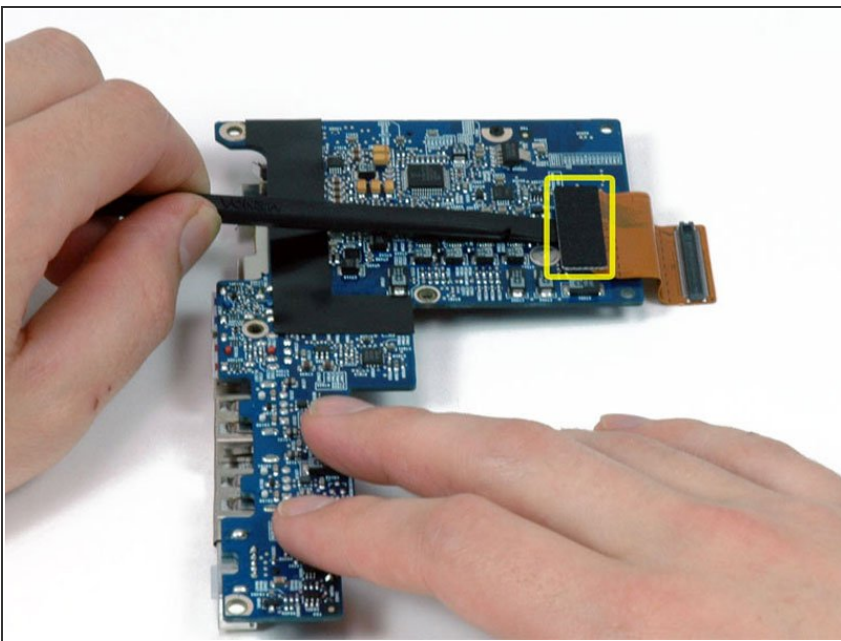
- Remove the four 4.2 mm black or silver T6 Torx screws securing the left I/O board to the lower case.
- Disconnect the large power connector from the left I/O board.

Step 20



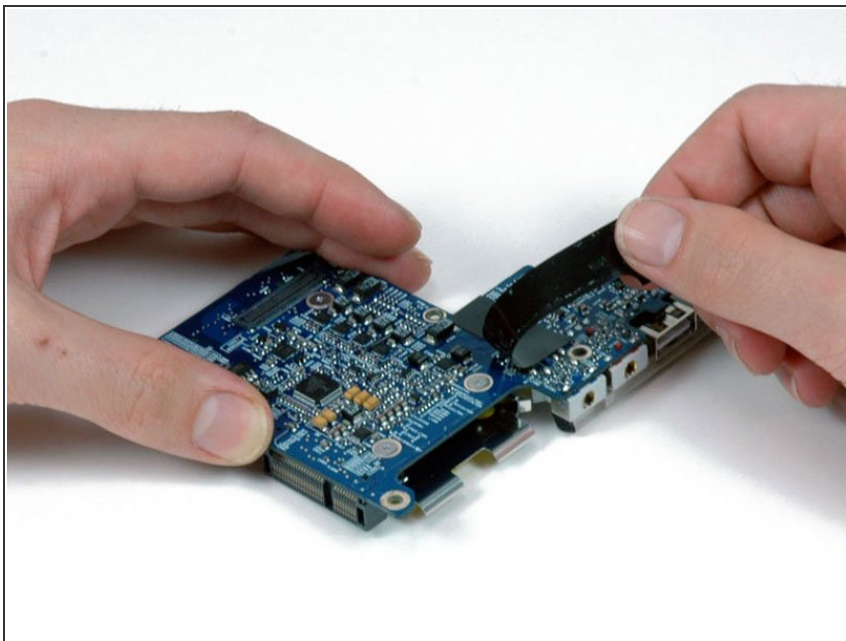
- Move the orange hard drive ribbon out of the way with one hand. Use your other hand to lift up the right side of the left I/O board and slide it out of the computer.

Step 21



- Turn the left I/O board over.
- Use a spudger to disconnect the short orange cable from the left I/O board.

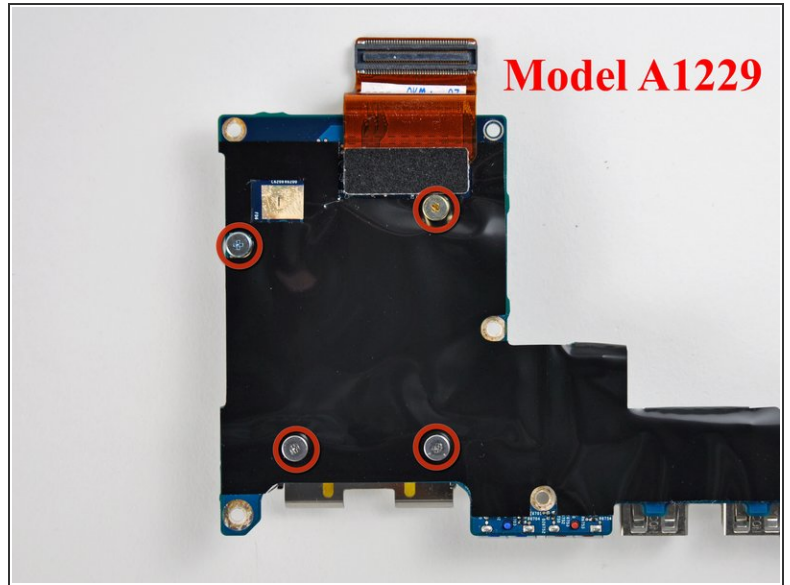
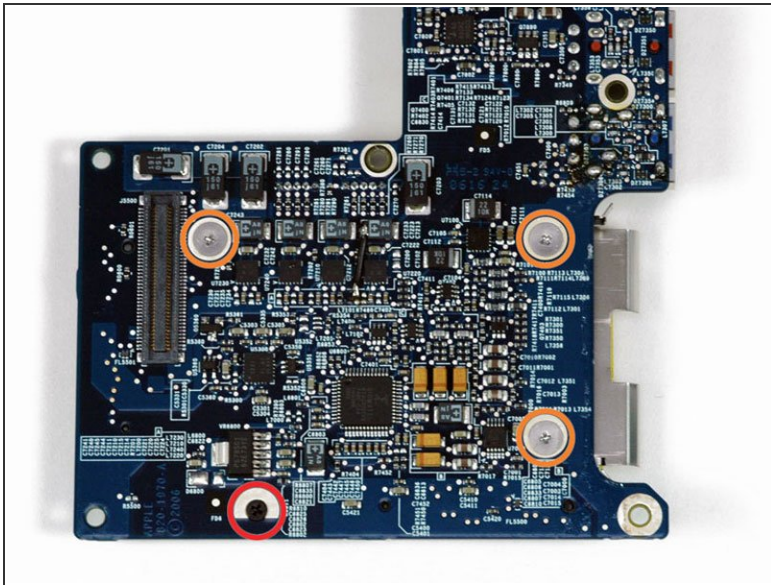
Step 22



⚠ If you have a MacBook Pro 17" Model A1229, this step is not necessary.

- Peel up the L-shaped piece of black tape on the I/O board to reveal the two silver Phillips screws beneath.

Step 23



- Remove the following four screws:
 - One 3.2 mm black Phillips screw with a small head.
 - Three 1.3 mm silver Phillips screws with large heads.
- ⓘ If you have a MacBook Pro 17" Model A1229, remove the four 1.3 mm silver Phillips screws with large heads.
- The I/O board is now free from the ExpressCard cage.

To reassemble your device, follow these instructions in reverse order.