



# WowWee MiP Robot Battery Replacement

The WowWee MiP robot has a tendency towards...

Written By: Moira Keahon



## INTRODUCTION

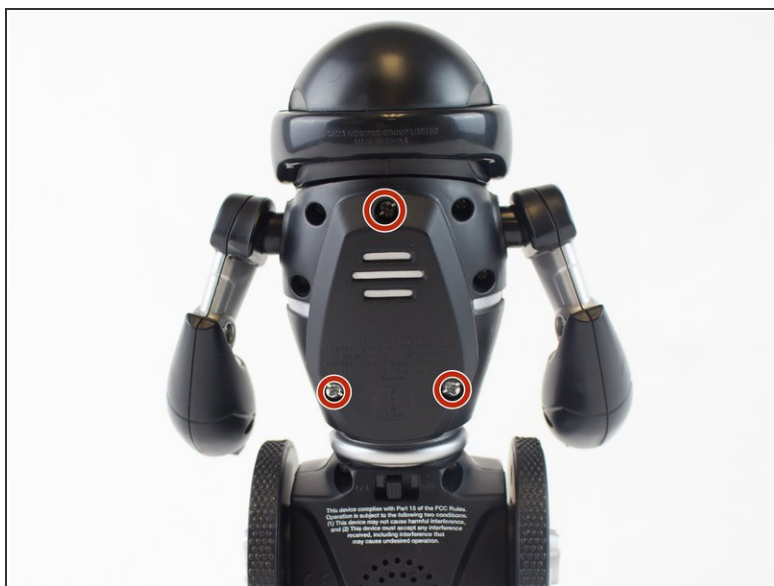
The WowWee MiP robot has a tendency towards short battery life. If the MiP seems too slow or stops responding, use this guide to change the MiP's batteries. The MiP's batteries are located in a battery pack on the robot's back.



### TOOLS:

- [Phillips #2 Screwdriver](#) (1)
-

## Step 1 — Battery



- Remove the three 12.0 mm Phillips # 2 screws from the battery cover.

## Step 2



- Carefully pull the battery pack from the robot.
- Remove the batteries from the battery pack.

To reassemble your device, follow these instructions in reverse order.