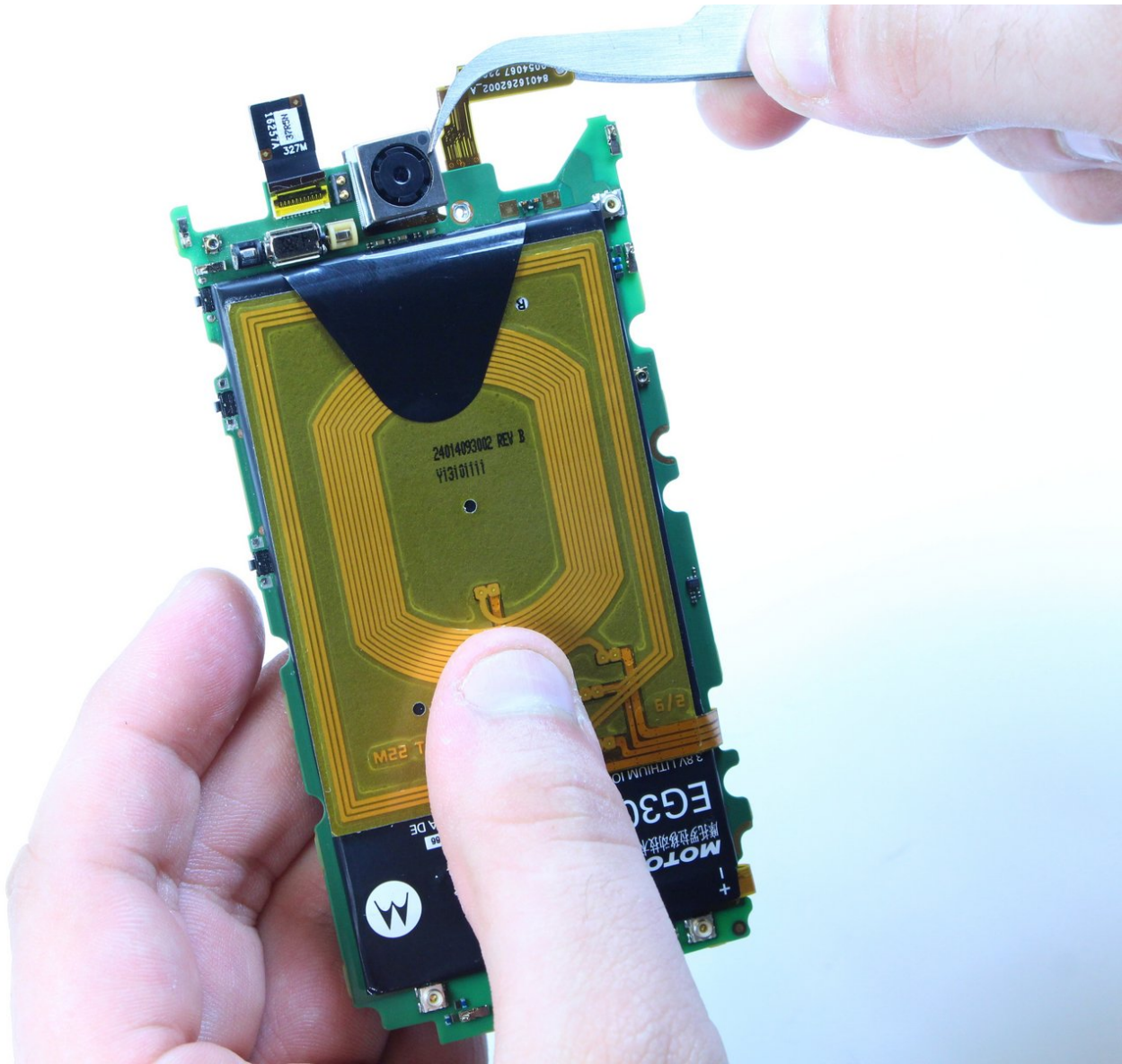




Motorola Droid Mini Camera Replacement

This guide will explain how to replace the camera of your Motorola Droid Mini.

Written By: Alec Fales



INTRODUCTION

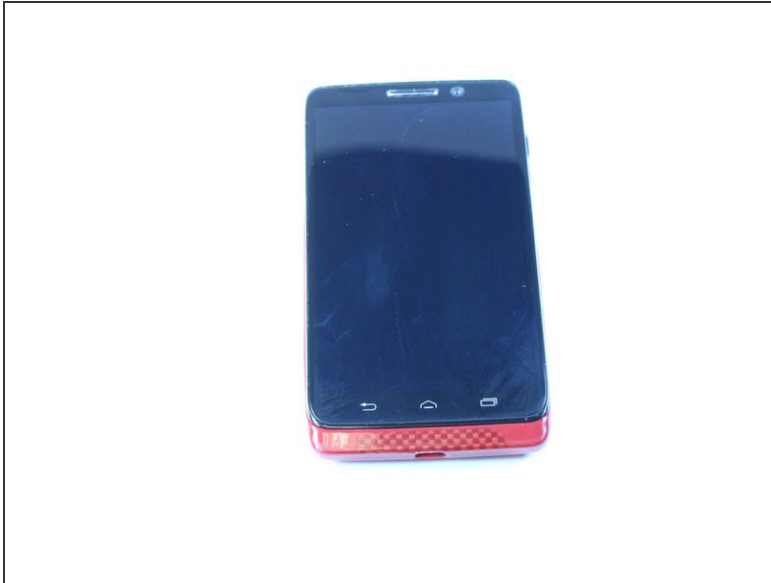
The camera or flash may stop functioning or require eventual replacement. Here is a guide that offers that.



TOOLS:

- [Tweezers](#) (1)
 - [T5 Torx Screwdriver](#) (1)
 - [iFixit Opening Tool](#) (1)
-

Step 1 — Back Case



- Pull out the volume keys using the iFixit opening tool.

Step 2



- Pry off the back case gently using the iFixit opening tool.
- ⓘ Make sure to go around the entire perimeter of the case.

Step 3 — Camera



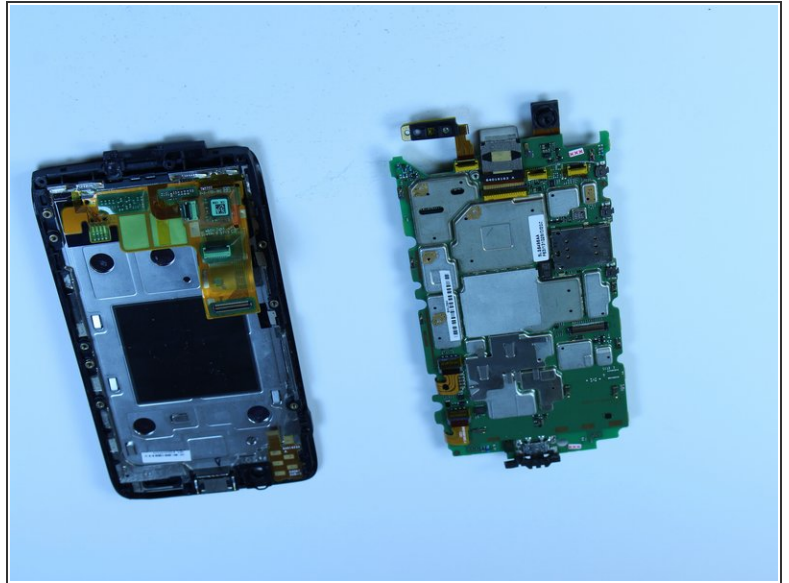
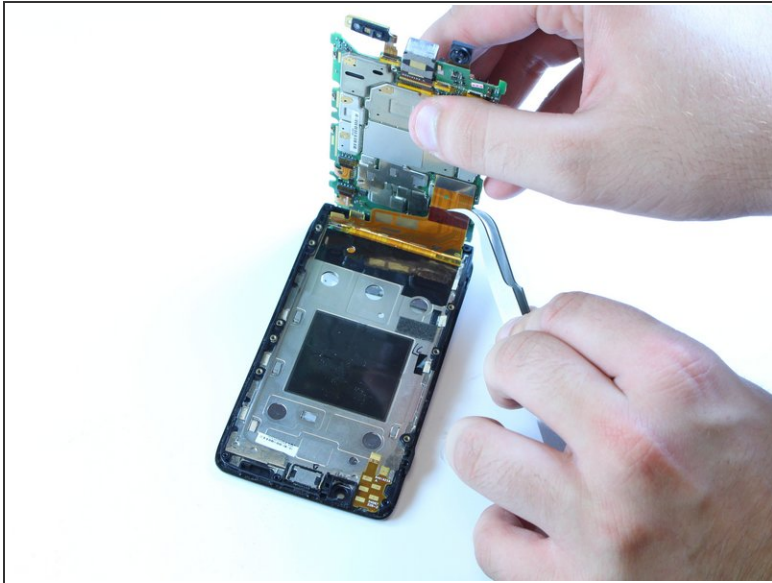
- Use a T5 Torx screwdriver to unscrew the nine silver screws from the housing frame.

Step 4



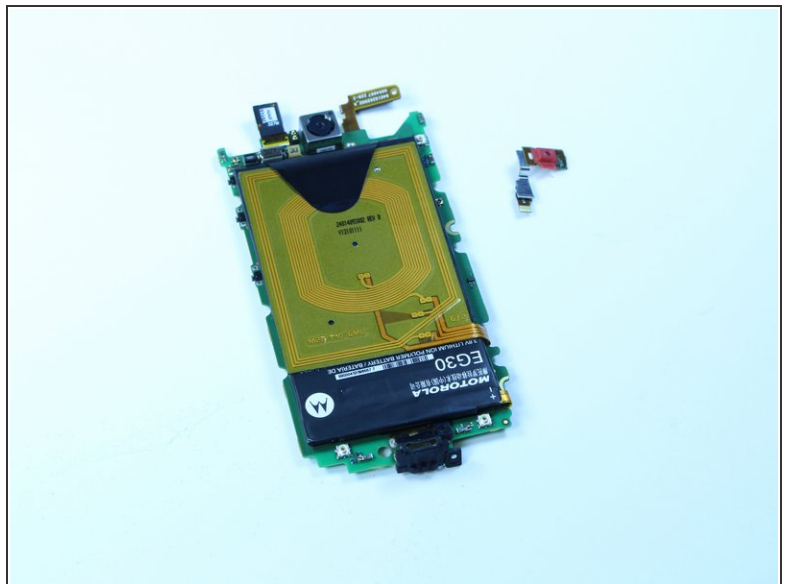
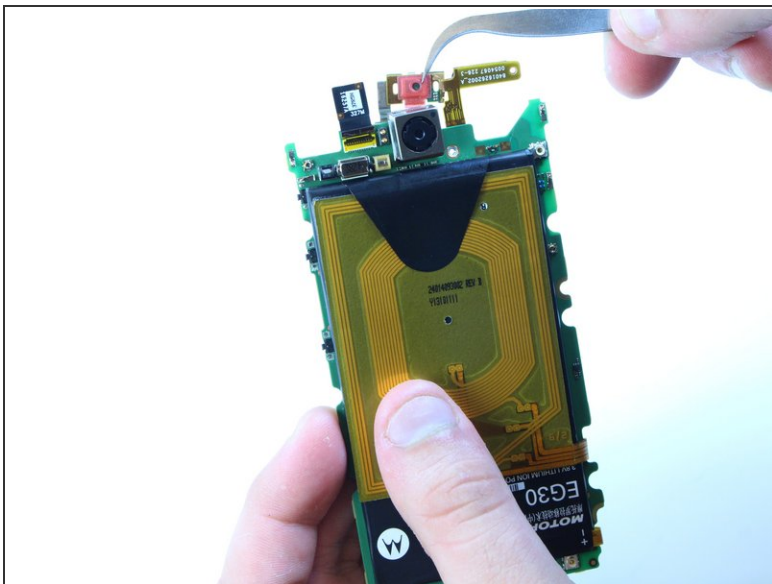
- Carefully separate the housing frame from the motherboard.

Step 5



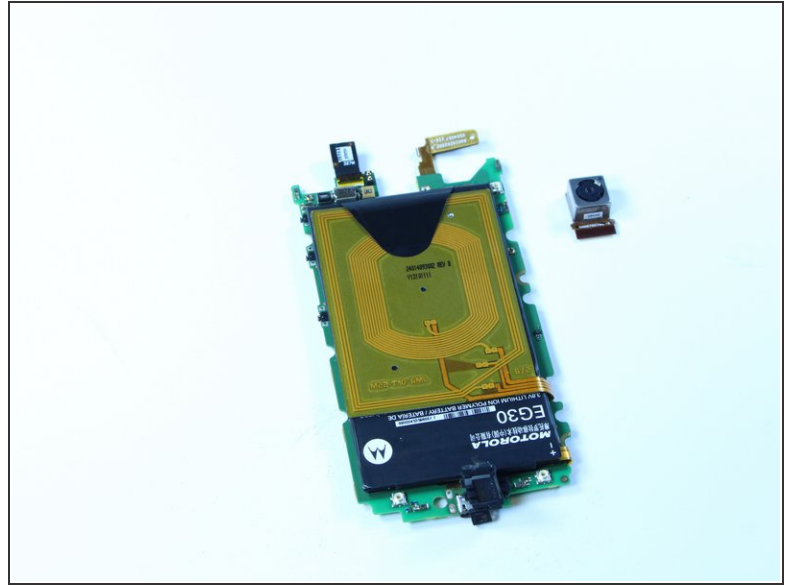
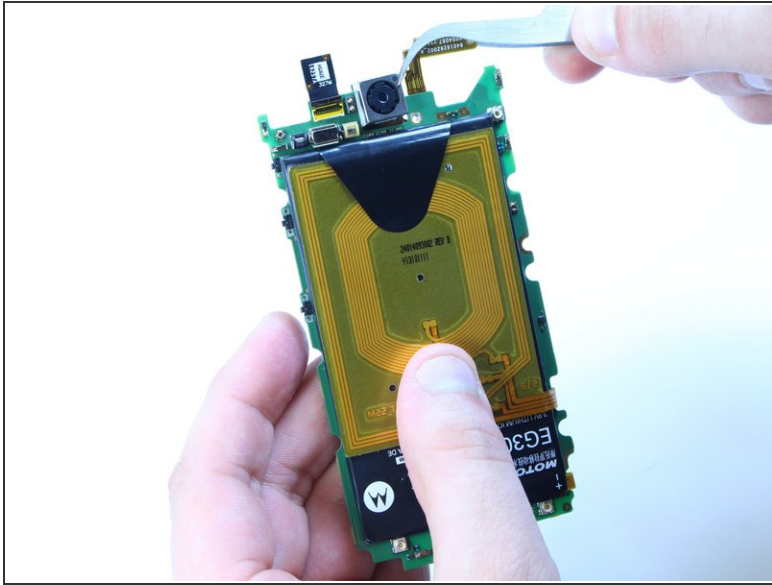
- Carefully use the tweezers to separate the motherboard from the screen.

Step 6



- Carefully use the tweezers to remove the flash motherboard.

Step 7



- Use tweezers to remove the camera from the motherboard.

To reassemble your device, follow these instructions in reverse order.