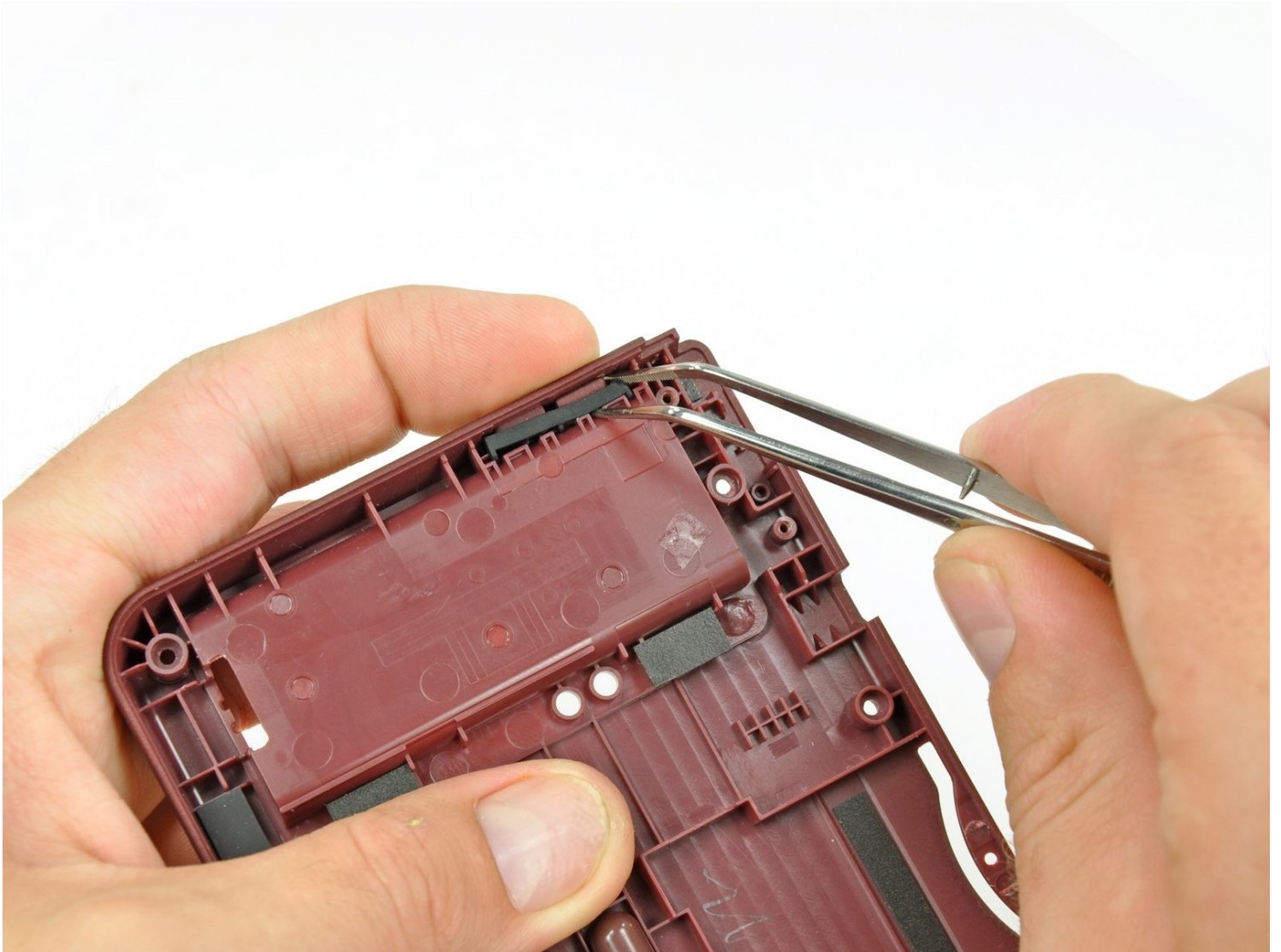




Nintendo DSi XL Volume Buttons Replacement

Give your DSi XL and audio edge by replacing...

Written By: Brett Hartt



INTRODUCTION

Give your DSi XL and audio edge by replacing the volume buttons.

TOOLS:

Phillips #00 Screwdriver (1)
Spudger (1)

PARTS:

Nintendo DSi XL Input Buttons (1)
Nintendo DSi XL Input Button Pads (1)

Step 1 — Battery



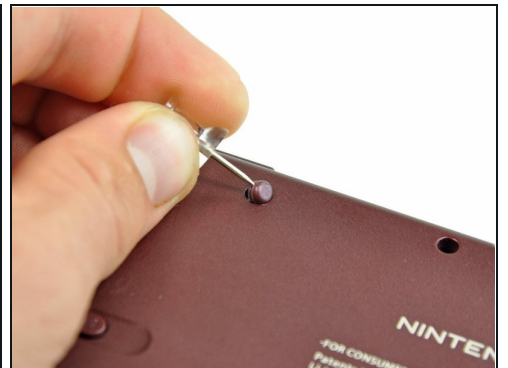
- Remove the two Phillips screws securing the battery cover to the back of the handheld console.
- Lift the battery cover off the back of the DSi XL.

Step 2



- Lift the battery from the DSi XL.

Step 3 — Lower Case



- Remove the four rubber screw covers on the lower case by prying them up with a push pin.

Step 4



- Remove the following seven Phillips screws that secure the lower case to the rest of the DSi XL:
 - Four silver 5.3 mm screws
 - Two black 5.3 mm screws
 - One black 2.5 mm screw

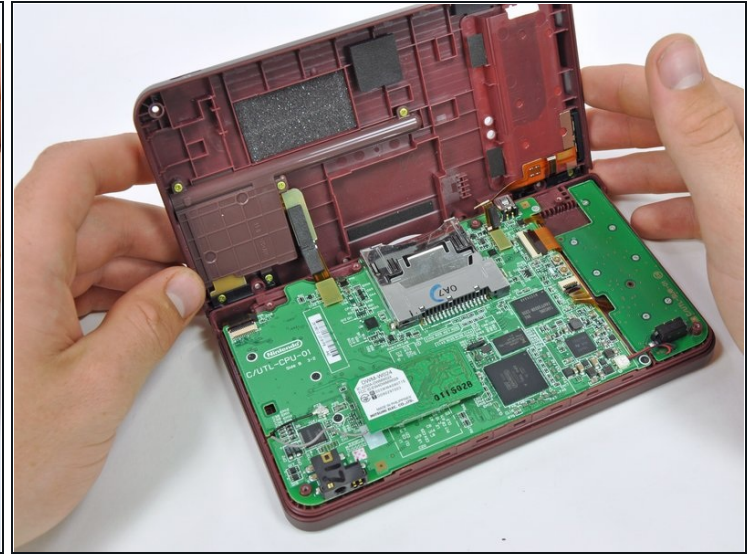
Step 5



① Turn the DSi XL over, and open the display.

- Insert a spudger between the upper and lower case at the bottom left corner of the DSi.
- Slide the spudger along the bottom edge of the upper case to release the latches securing the upper case to the lower case.

Step 6

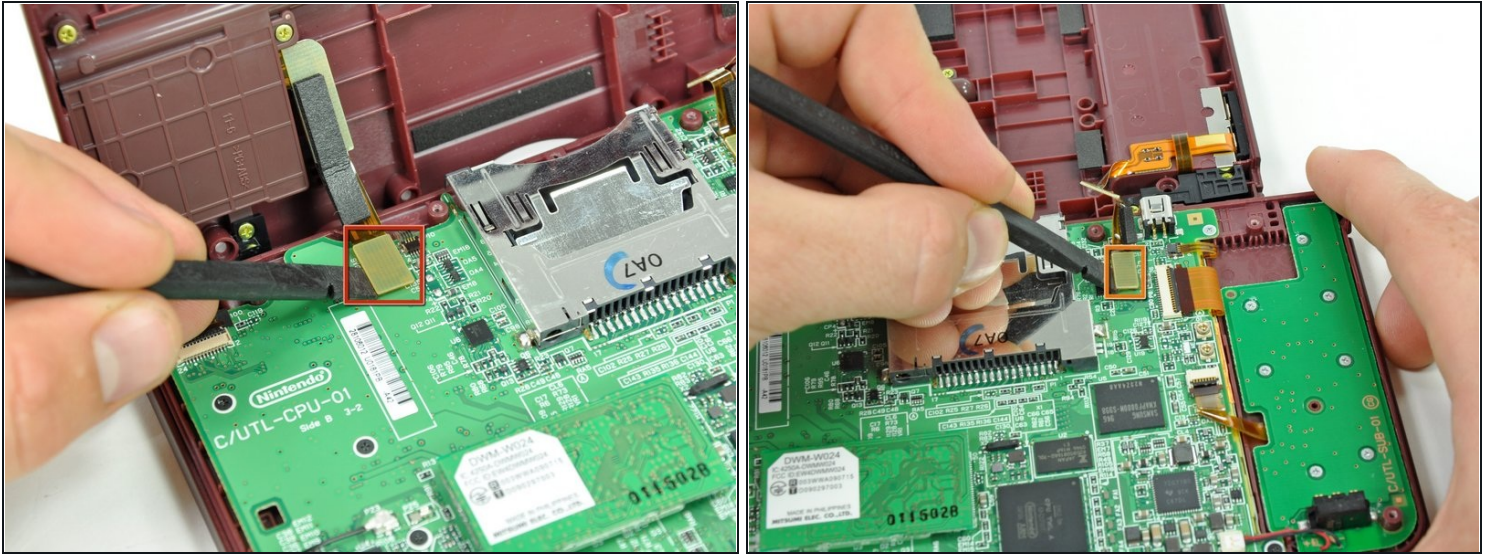


① Close the display and turn the DSi XL over.

- Lift the lower case from the front edge.
- Rotate the lower case away from the DSi.

① The lower case cannot be completely removed yet, since it is still connected to the motherboard.

Step 7



- Using a spudger, pry the SD card/right shoulder button connector off its socket.
- Pry the volume button/left shoulder button connector off its socket on the motherboard with a spudger.

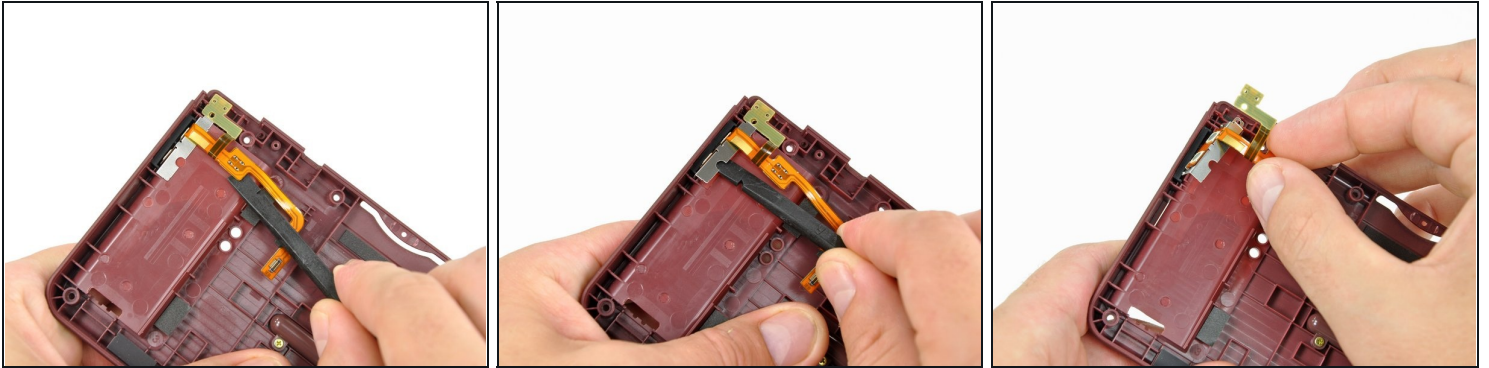
Step 8 — Volume Control Switch



- On the inside of the battery compartment, use the tip of a spudger to detach the metal latch securing the volume control switch in place.

☒ The latch will only move about 1 mm.

Step 9



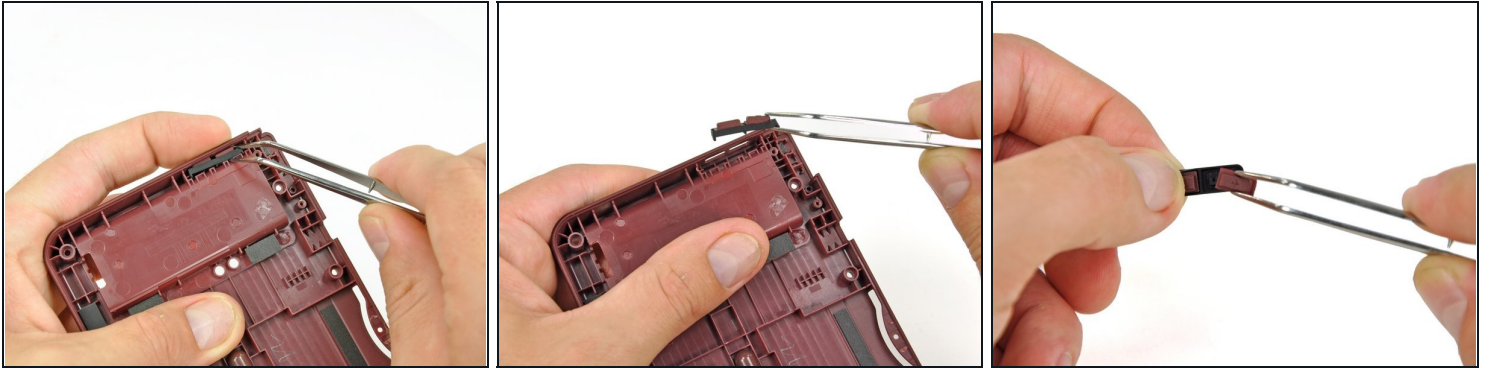
- Using the flat end of a spudger, remove the adhesive securing the volume control switch ribbon cable to the back of the battery compartment.
- Using the flat of a spudger, pry the volume control switch straight up out of the lower case.
- Remove the volume control switch from the DSi XL.

Step 10



- Using the flat end of a spudger, remove the volume control buttons from the metal backing bracket.
- ⓘ The bracket is attached by a strong adhesive. Work slowly and carefully, being sure to not damage the ribbon cable.
- Volume control switch remains.

Step 11 — Volume Buttons



- While pushing the volume buttons through their holes in the lower case, remove the buttons and their silicone pads with a pair of [tweezers](#).
- ① Work patiently and carefully as the silicone pad is easily torn.
- Remove the buttons from the silicone pad.

To reassemble your device, follow these instructions in reverse order.