



PlayStation Move Controller Teardown

This is a quick teardown of the playstation move controller.

Written By: mcwiggin



INTRODUCTION

This is a quick teardown of the playstation move controller.



TOOLS:

- [Phillips #0 Screwdriver](#) (1)
 - [iFixit Opening Tools](#) (1)
-

Step 1 — PlayStation Move Controller Teardown



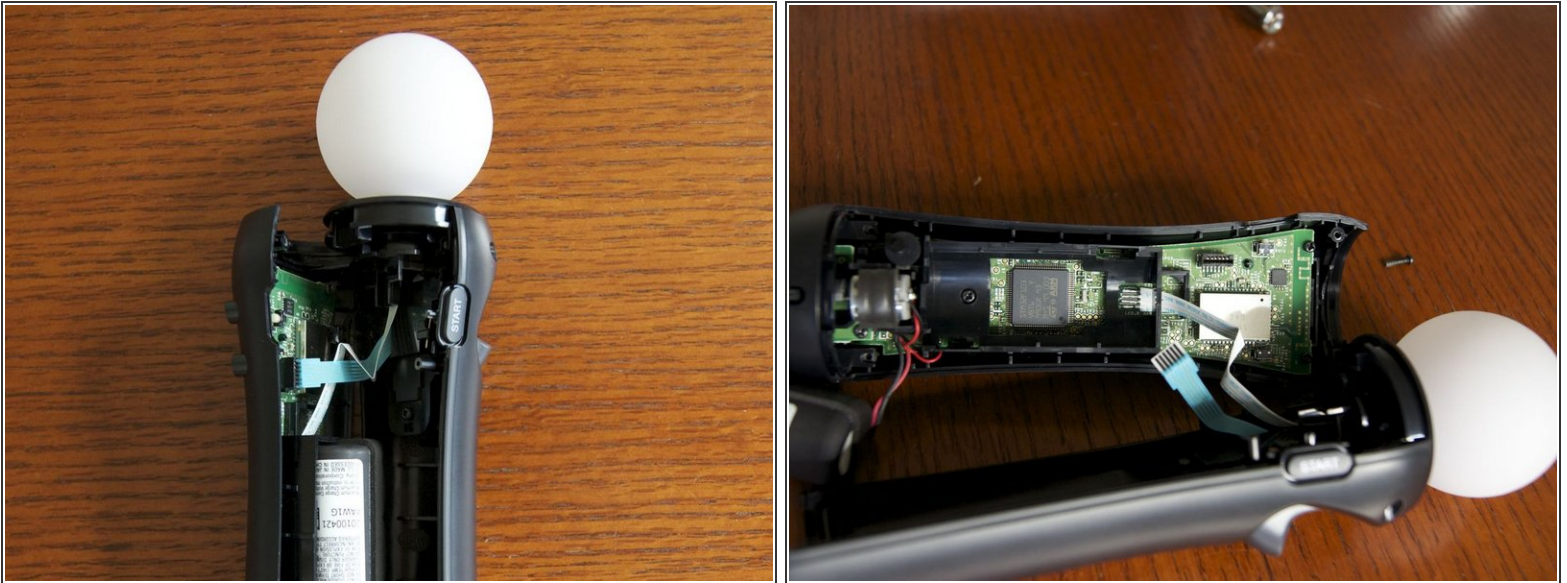
- Playstation Move Controller

Step 2



- Remove the 4 screws holding the back over and trigger button on.

Step 3



- Once open you will see two ribbon cables.
- The one connected to the trigger button is removable.
- The ribbon cable attached to light globe is soldered on.

Step 4



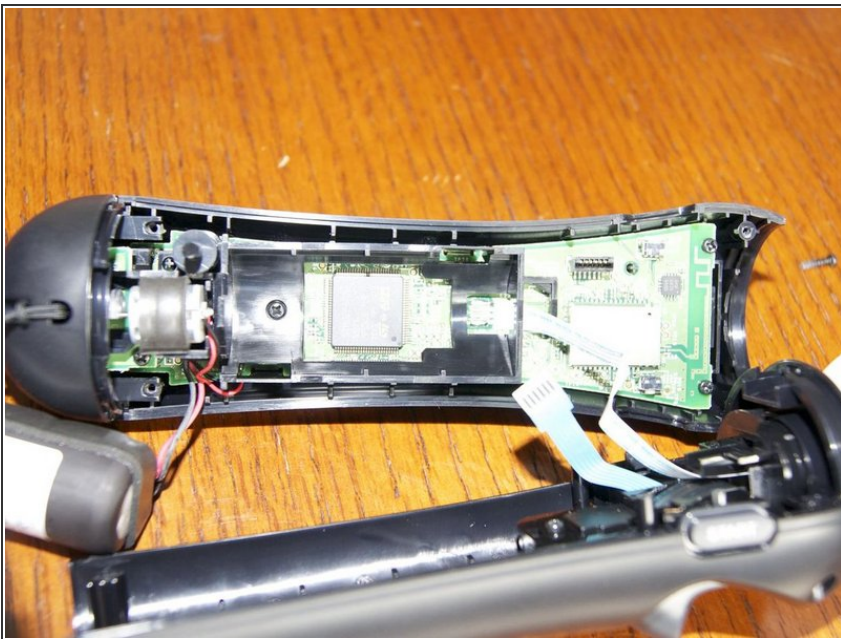
- Light Globe Cover and the LED Module can be separated.

Step 5



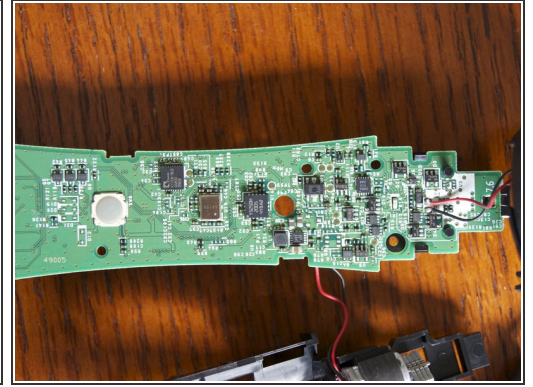
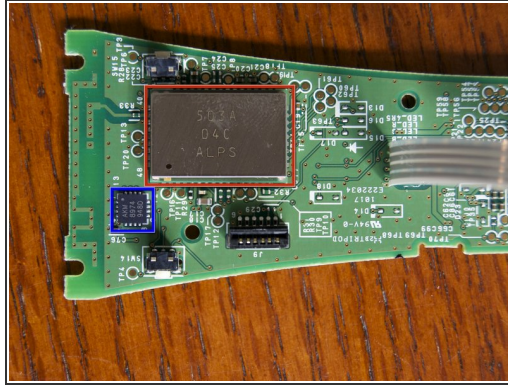
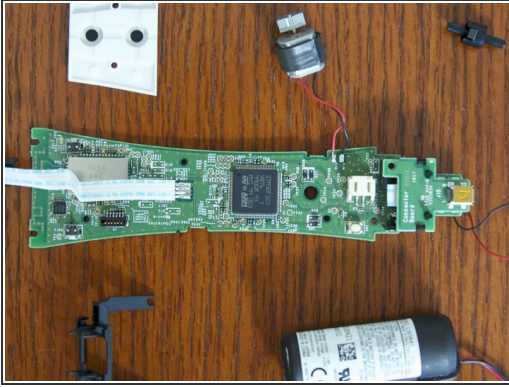
- The battery can easily be removed. There is connector on the side of the board.
- Battery Specs: Single Cell 1380 mAh 3.7 Volt
- Sony Part: LIS1441

Step 6



- Remove the inner plastic (1 Screw) frame to expose the logic board
- Remove the 2 top screws and one bottom screw to remove the logic board from the controller.

Step 7



- Logic Board
- Chip Closeups Included
- 503A 04c ALPS - Radio Module
- AKM8974948D - MEMS Gyroscope

To reassemble your device, follow these instructions in reverse order.