



RCA 22" DECK215R HDTV Screen Replacement

This guide explains how to remove the screen from the plastic housing of the RCA DECK215R HDTV.

Written By: Patrick Soper



INTRODUCTION

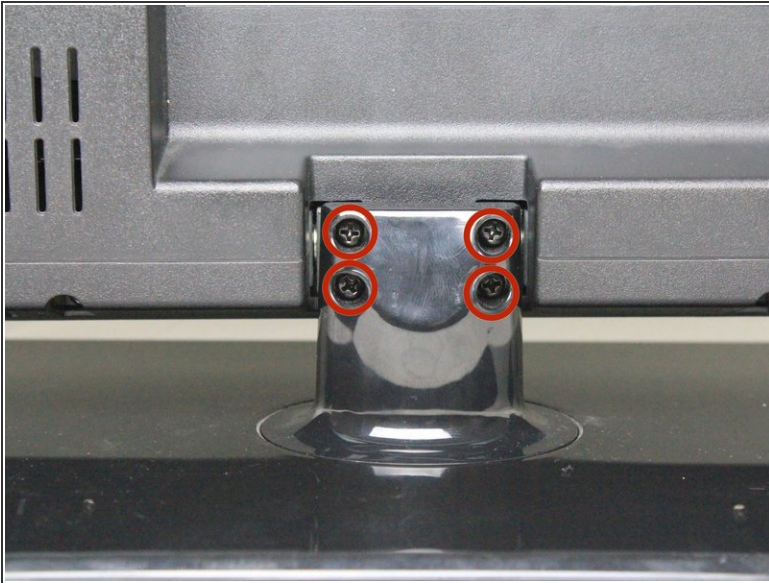
If your screen is cracked or has dead pixels and is in need of replacement, this guide explains how to remove the screen from the TV.



TOOLS:

- [Phillips #0 Screwdriver](#) (1)
 - [Phillips #2 Screwdriver](#) (1)
-

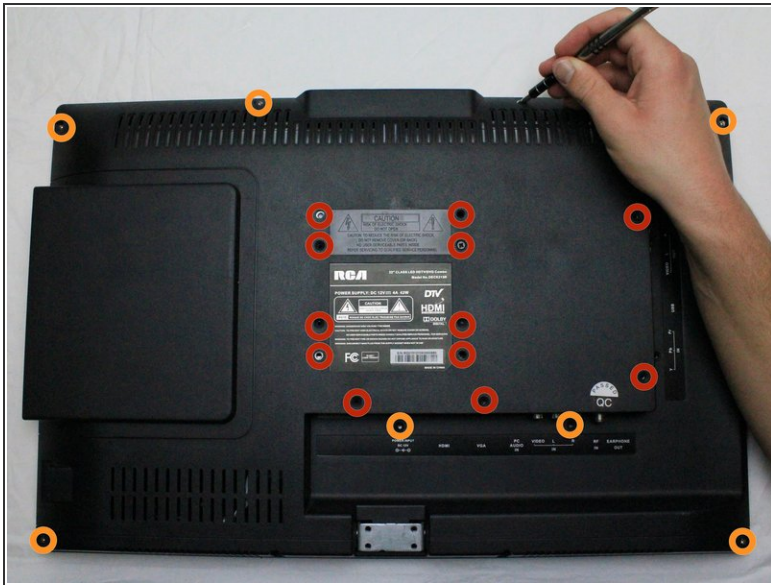
Step 1 — Removing the Stand



⚠ Before disassembling your television, ensure that all cables are unplugged from their power source to avoid serious injury or death from electrocution.

- Lay the TV flat with the screen facing down.
- Remove the four, 12mm Phillips #2 screws from the back of the TV stand. Support the TV from underneath as you remove the screws, so the bottom does not fall on the table.
- Remove the stand by lifting it away from the TV's backing.

Step 2 — Removing the Back Panel



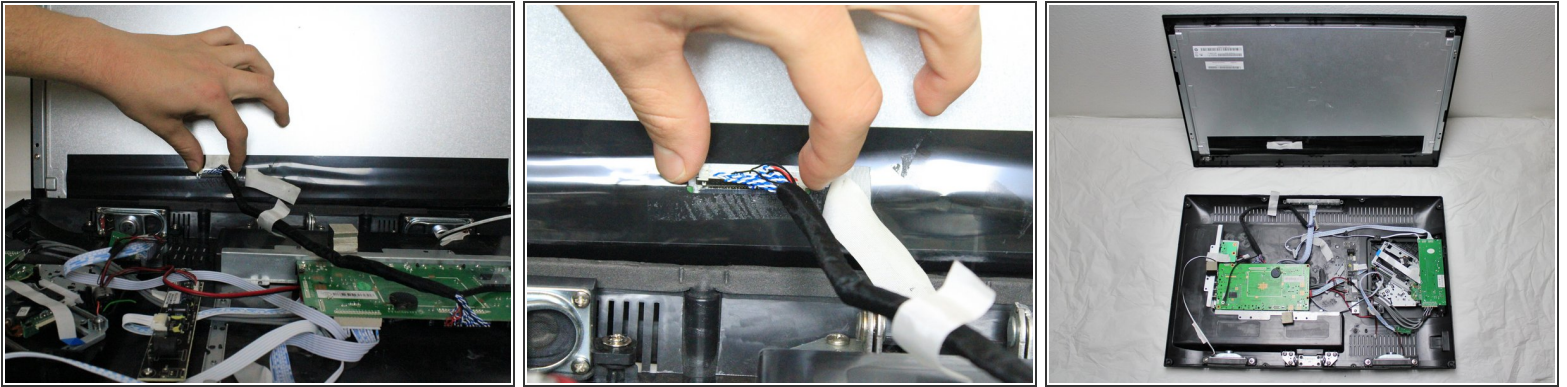
- Remove the twelve, 6mm Phillips #2 screws from the middle of the TV's rear casing.
- Remove the seven, 9mm Phillips #2 screws from the outer edge of the TV's rear casing.
- While holding the screen down, pull the back panel up slowly, ensuring that you do not forcibly disconnect the remaining ribbon cable.

Step 3 — Locate Pin



- Position the television to where the back panel is resting on the table and the screen is vertical.
- Peel the tape covering the ribbon cable horizontally.

Step 4



- Pinch the clamps on both sides of the ribbon cable casing to detach it from the screen panel.
- Remove the screen to isolate the back panel.

Step 5 — Remove Screws



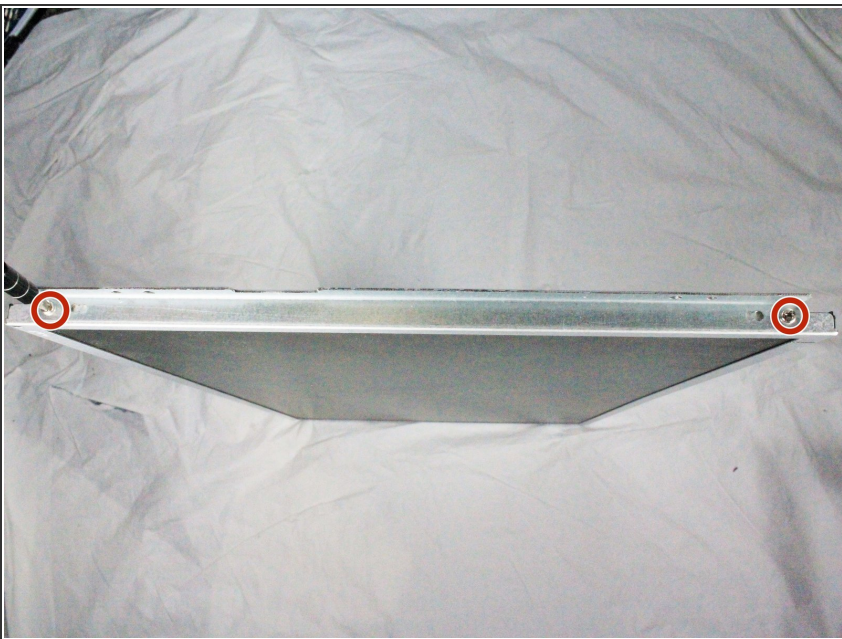
- Remove the four, 12mm Phillips #2 screws from the outer edge of the back of the screen panel.

Step 6 — Remove the Screen from the Frame



- Lift up the screen to remove it from the plastic frame.

Step 7 — Remove Brackets from the Side of the Screen



- Remove the two, 5mm Phillips #2 screws from the metal bracket attached to the horizontal side of the TV and take the bracket off.
- Repeat this process on the other side of the TV to completely isolate the screen.

To reassemble your device, follow these instructions in reverse order.