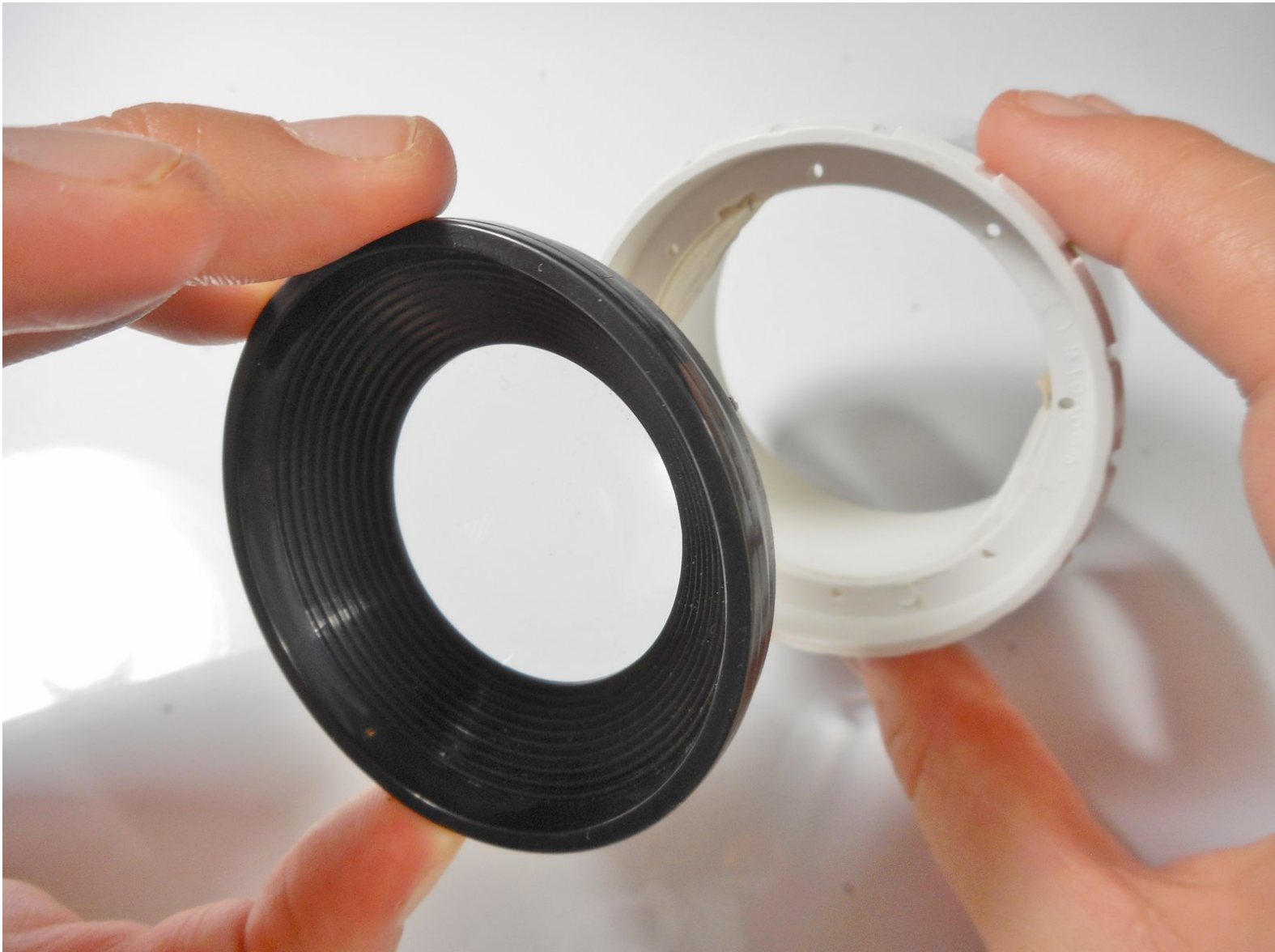




Merch Source Projector Entertainment II Outer Lens Replacement

This guide will show you how to replace a broken outer lens for your Merch Source Projector.

Written By: Stephanie



INTRODUCTION

Do you have a blurry image or a broken outer lens? Follow these step by step instructions to learn how to disassemble the projector and remove the outer lens for your repairs.



TOOLS:

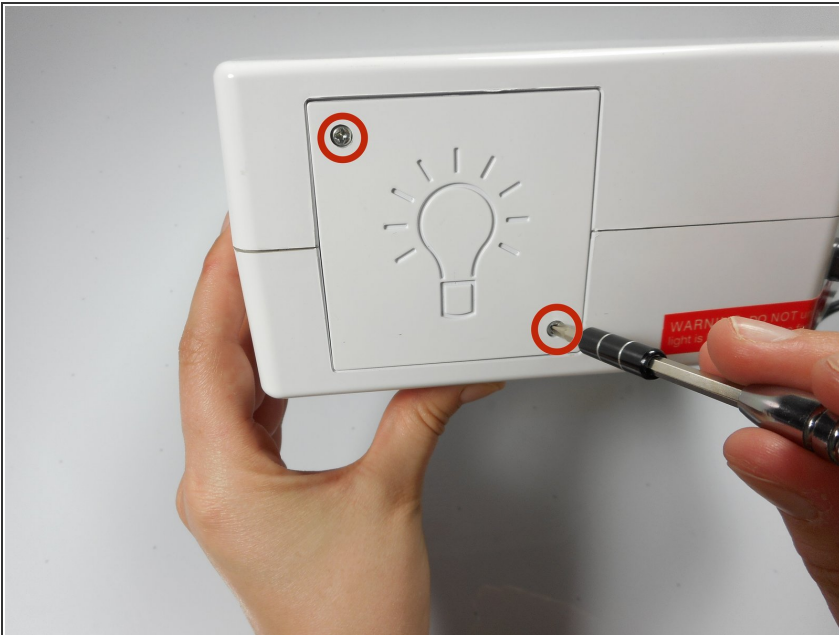
- [Phillips #0 Screwdriver](#) (1)
 - [Spudger](#) (1)
-

Step 1 — Outer Casing



- Flip the projector onto its back and unscrew the nine 15mm screws using the Phillips #0 screw driver.

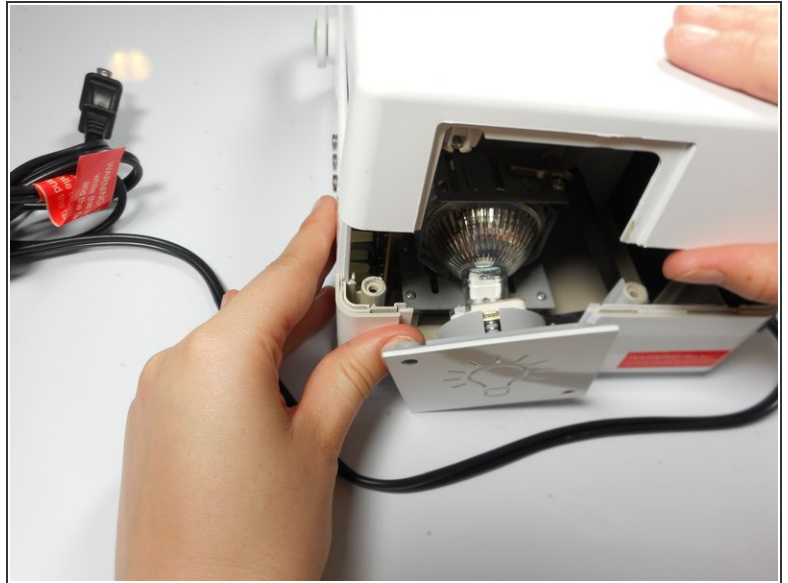
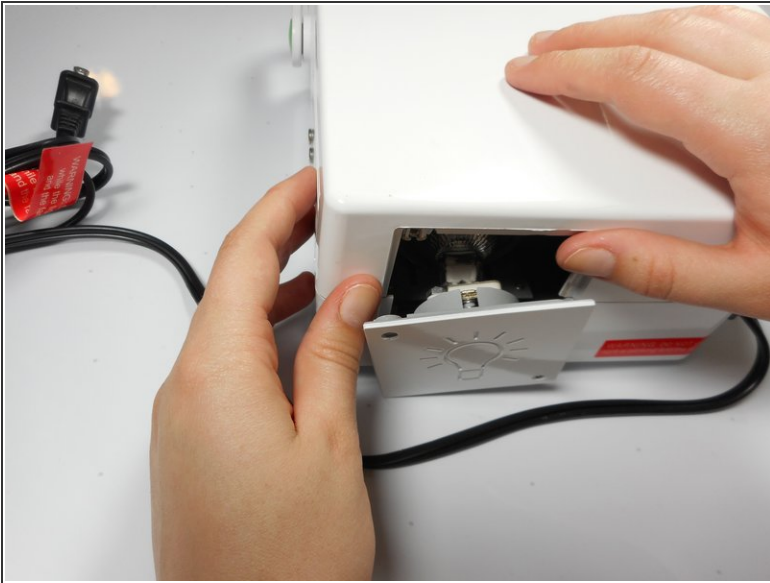
Step 2



- Flip the projector right side up and unscrew the two 12mm screws on the light bulb panel located at the rear of the projector with a Phillips #0 screw head.

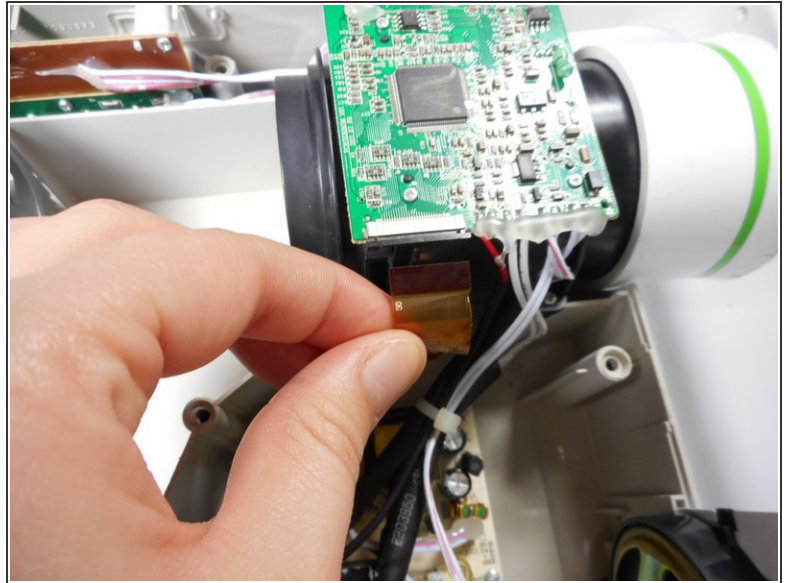
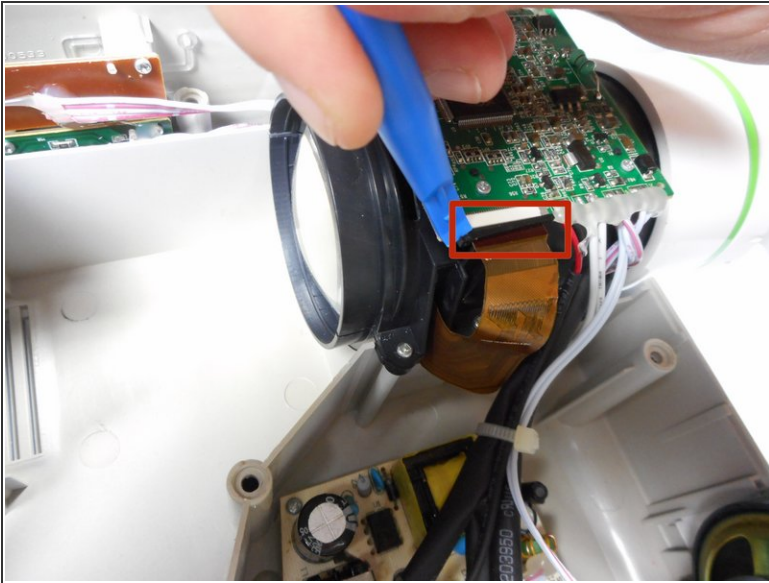
i The bottom right panel screw does not come completely out the panel door.

Step 3



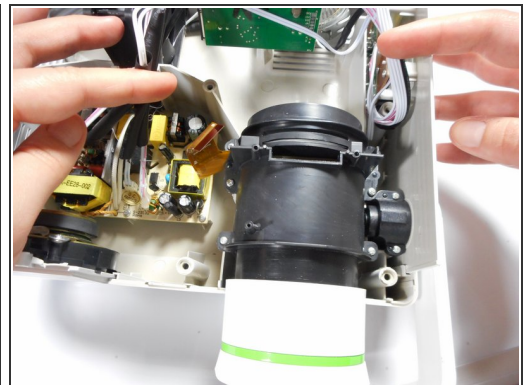
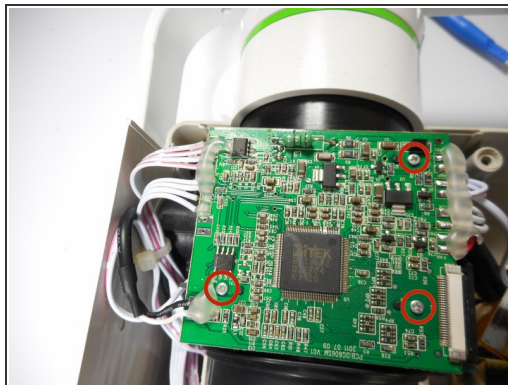
- Using your hands, gently pry the top and bottom of the projector casing apart.

Step 4 — Ribbon Cable Detachment



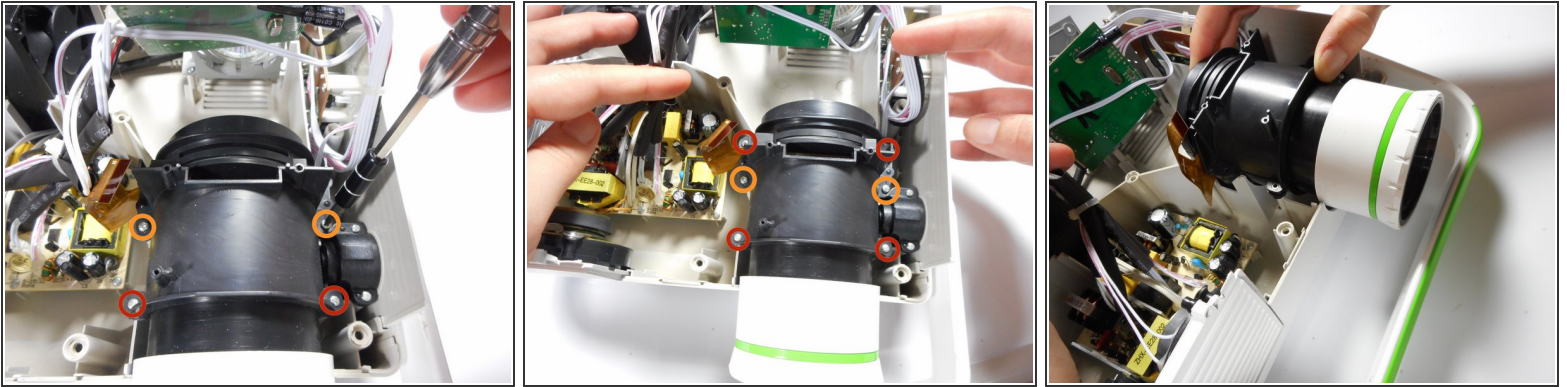
- Use the plastic opening tool to gently disengage the black clip housing from the ribbon cable.
 - Once the ribbon cable is disengaged gently pull the cable off the motherboard.
- ⚠ Once the housing is disengaged, the ribbon cable should slide out easily. Do not pull too hard on the ribbon cable as it is very fragile.

Step 5 — Motherboard Detachment



- Unscrew the three 7 mm screws from the motherboard with the Phillips #0 screw driver.
 - Once loose, lift the motherboard off of the lens casing, and move it away from the workspace.
- ⚠ Be sure not to damage any of the wires attached to the motherboard.



Step 6 — Lens Casing Detachment



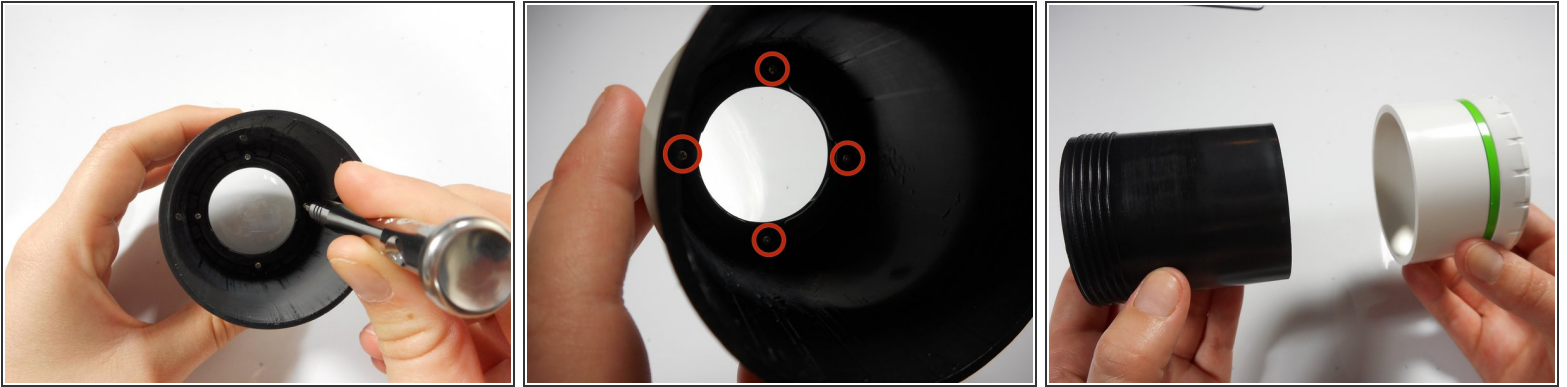
- Unscrew the four 15mm Phillips screws using the Phillips #0 screw driver.
- Unscrew the two 12mm Phillips screws using the Phillips #0 screw driver.
- Gently remove the entire lens casing from it's position.

Step 7 — Lens Casing Separation



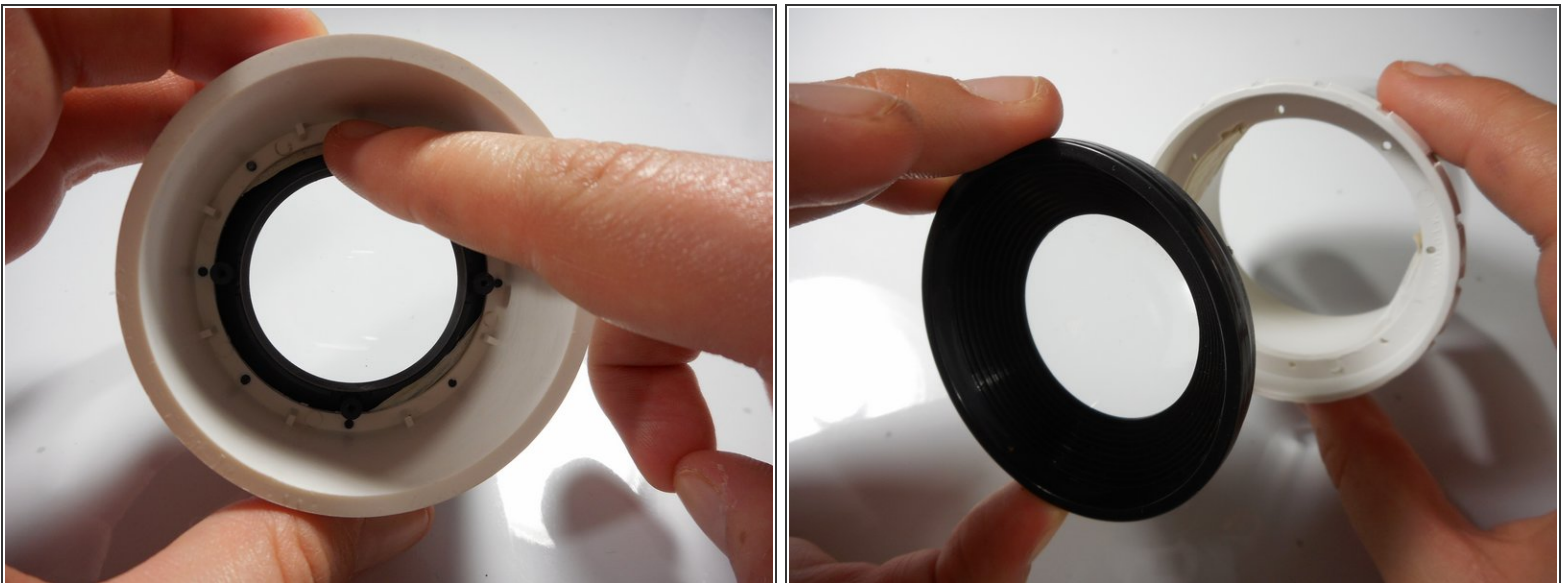
- Using the plastic opening tool, slightly separate the casing holding the large lens in place.
 - Separate the casing completely from the inner lens using your hands.
 - This should release the outer lens and it's immediate casing.
-  As you separate the outer casing, the lens and digital display box may fall out of their encasement.
-  Although there are threads connecting the outer lens casing and the inner lens casing, do not be fooled. The outer lens casing cannot be disconnected by unscrewing it.

Step 8 — Outer Lens Casing Separation



- Unscrew the four 8mm Phillips screws at the base of the outer lens casing using the Phillips #0 screw driver.
- Separate the white outer casing from the black outer casing.

Step 9 — Final Outer Lens Removal



- Using your finger, gently push the lens out of its white encasement.
- The outer lens is now free and ready for replacement.

To reassemble your device, follow these instructions in reverse order.