



# Merch Source Projector Entertainment II Light Bulb Replacement

Use this replacement guide to put a fresh light bulb in your projector.

Written By: Stephanie



---

## INTRODUCTION

Dim picture? No display? Discolored output? No problem! Use this guide to replace the burnt light bulb with a new one. To complete this replacement, you will need the following parts ready:



### TOOLS:

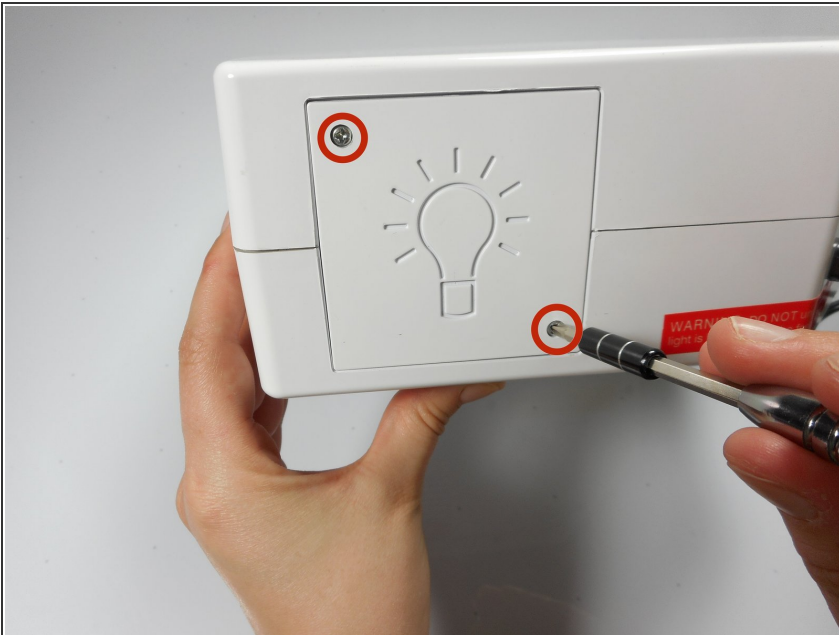
- [64 Bit Driver Kit](#) (1)  
Phillips head
-

## Step 1 — Outer Casing



- Flip the projector onto its back and unscrew the nine 15mm screws using the Phillips #0 screw driver.

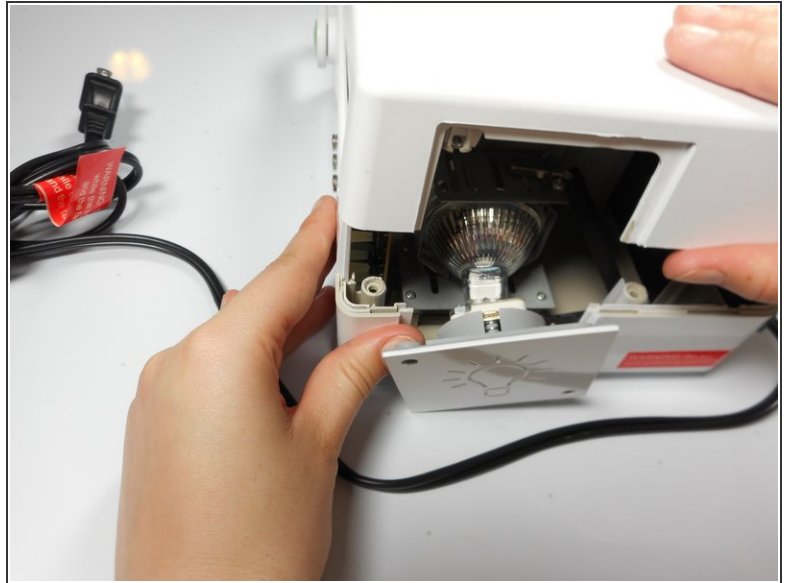
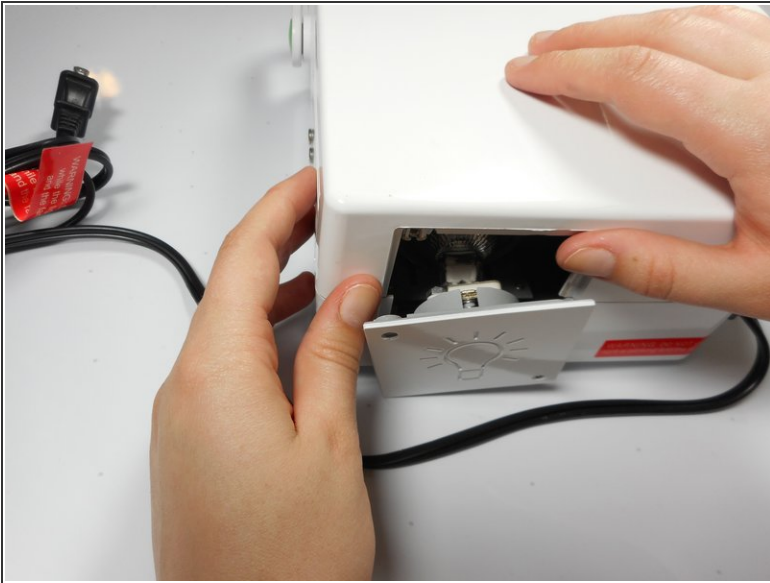
## Step 2



- Flip the projector right side up and unscrew the two 12mm screws on the light bulb panel located at the rear of the projector with a Phillips #0 screw head.

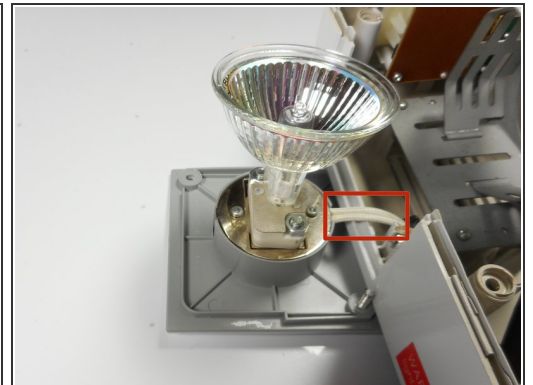
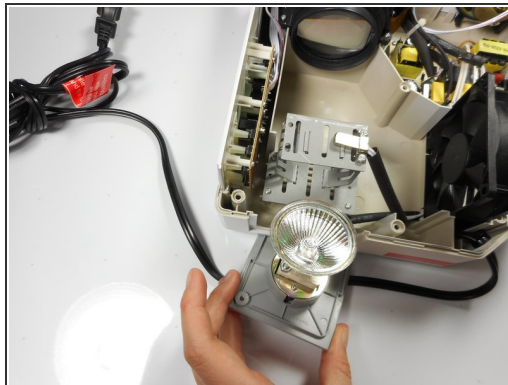
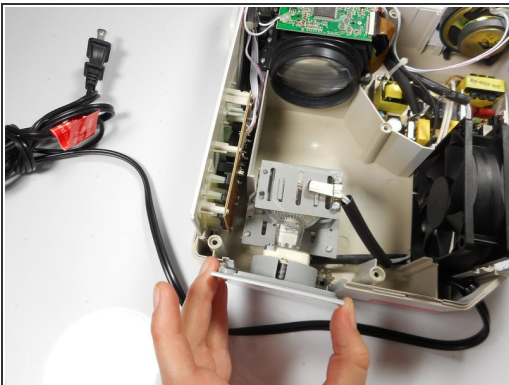
**i** The bottom right panel screw does not come completely out the panel door.

### Step 3



- Using your hands, gently pry the top and bottom of the projector casing apart.

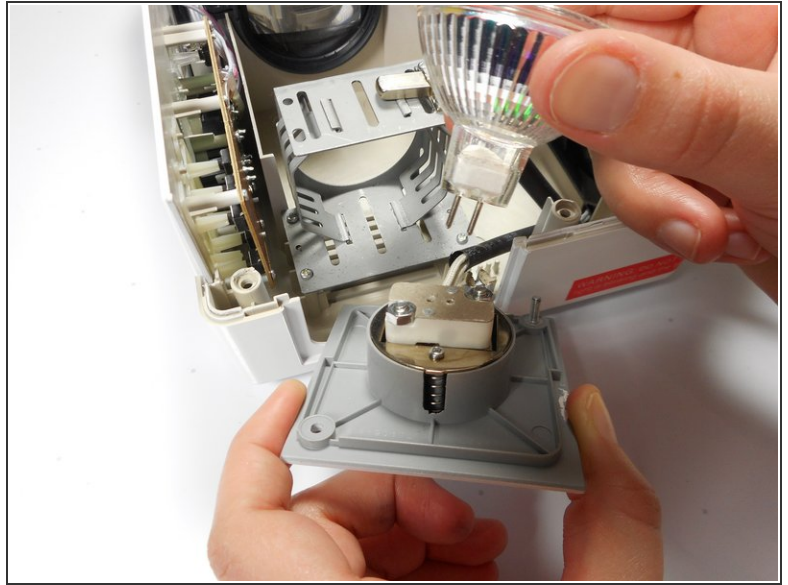
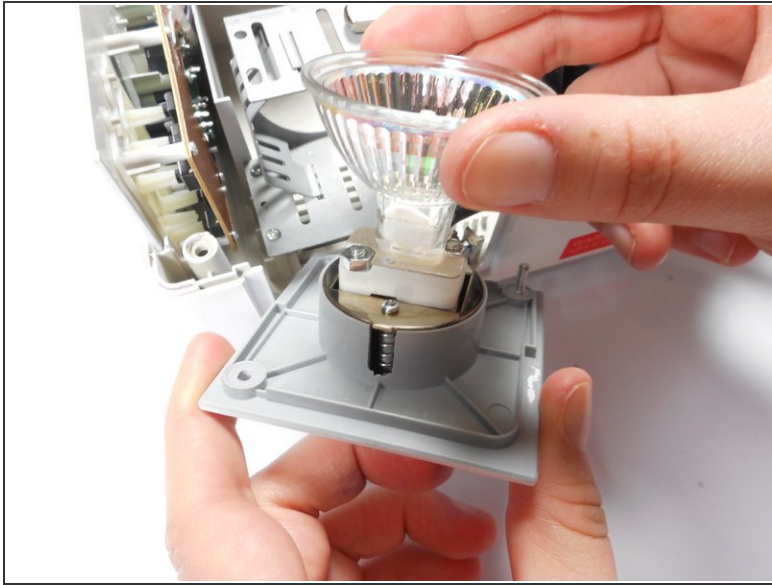
### Step 4 — Remove light bulb assembly from housing unit



- Remove the light bulb from its housing unit.

⚠ Do not damage the 2 white cables leading into the light bulb panel.

## Step 5 — Replace light bulb



- Remove the light bulb from the door panel by gently wiggling it back and forth. Do not twist the light bulb.
- ⓘ The light blub is held into the socket with prongs, and should easily pull straight out.

To reassemble your device, follow these instructions in reverse order.