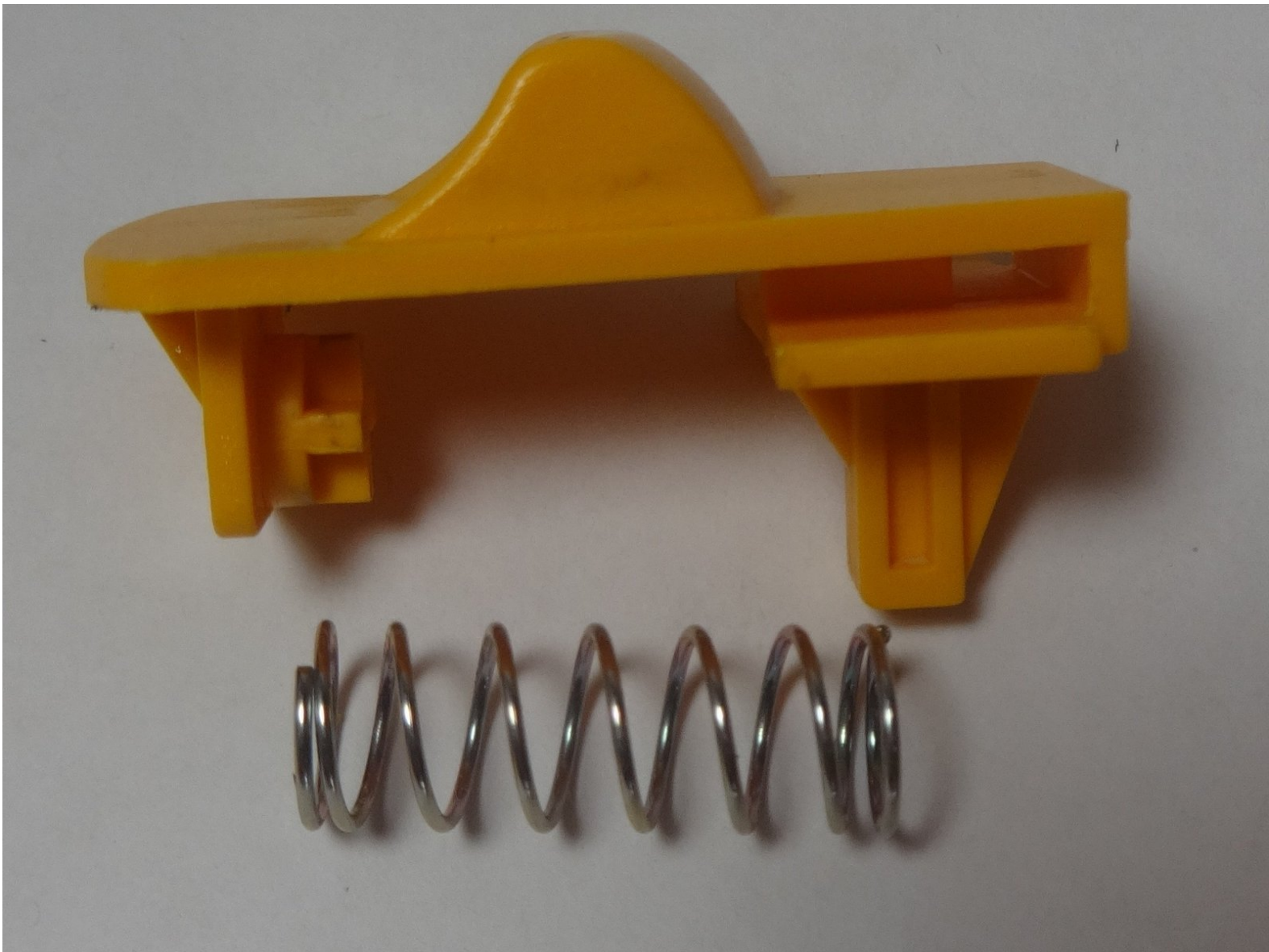




Homelite UT44172 Safety Switch Replacement

This guide shows how to replace the Safety Switch on the Homelite UT44172 4.8-volt Cordless Grass Shear.

Written By: Daniel Endericavillacis



INTRODUCTION

This guide shows how to replace the Safety Switch on the Homelite UT44172 4.8-volt Cordless Grass Shear. The safety switch must be pressed simultaneously with the operating switch for the blades to move. If the safety switch is stuck or loose, then it or its spring may need to be replaced.



TOOLS:

- [Phillips #2 Screwdriver](#) (1)



PARTS:

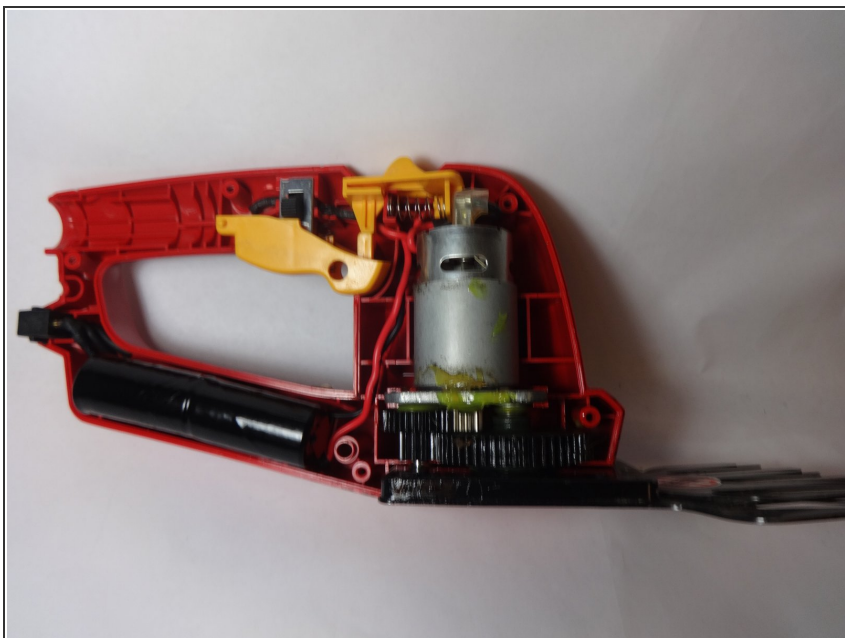
- [Ut44172 Cordless Grass Shear Safety Switch](#) (1)

Step 1 — Opening the device



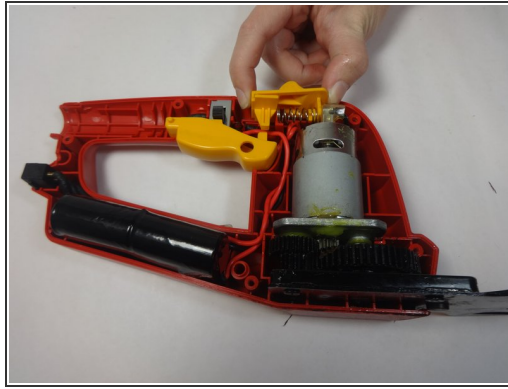
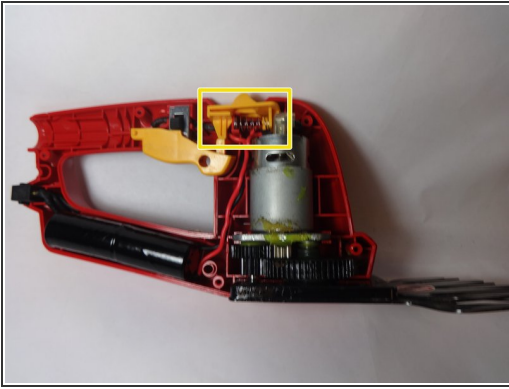
- Remove the six 1.5 cm screws marked on the picture from the plastic casing with a Phillips #2 screwdriver.

Step 2 — Remove Faceplate



- Remove the faceplate to expose the inner mechanisms.

Step 3 — Switch Removal



- Remove the safety switch by pulling it away from the body of device.
- ⓘ Be careful not to lose the spring, which is under pressure and may fly out during removal.

Step 4 — Spring Replacement



- Inspect both the spring and the switch to see if either is deformed or damaged. If so, replace the damaged part with a new part.
- ☑ During reassembly, gently move the inner wires out of the way so they do not get caught in the spring.

To reassemble your device, follow these instructions in reverse order.