



# Saitek X52 Pro Disassembly

The main shooting trigger can have some issues due to poorly activated contact that can be easily fixed.

Written By: Cri Cri



# INTRODUCTION

Saitek X52 Pro is a great Flight System Controller, however it is not without flaws.

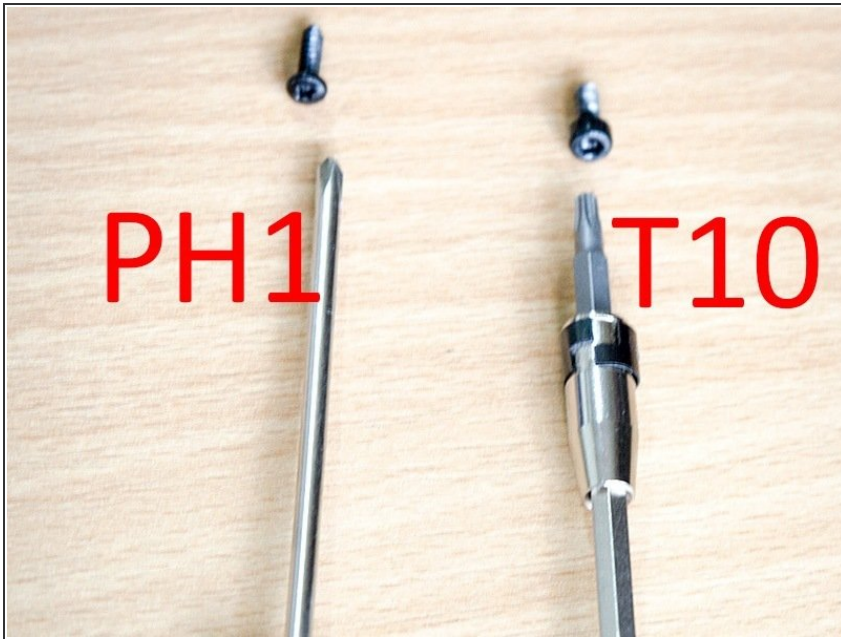
For me as well as for some other users, the shooting trigger sometimes stops working. This doesn't mean you have to throw it away, instead with a little bit of patience, you can fix it yourself.



## TOOLS:

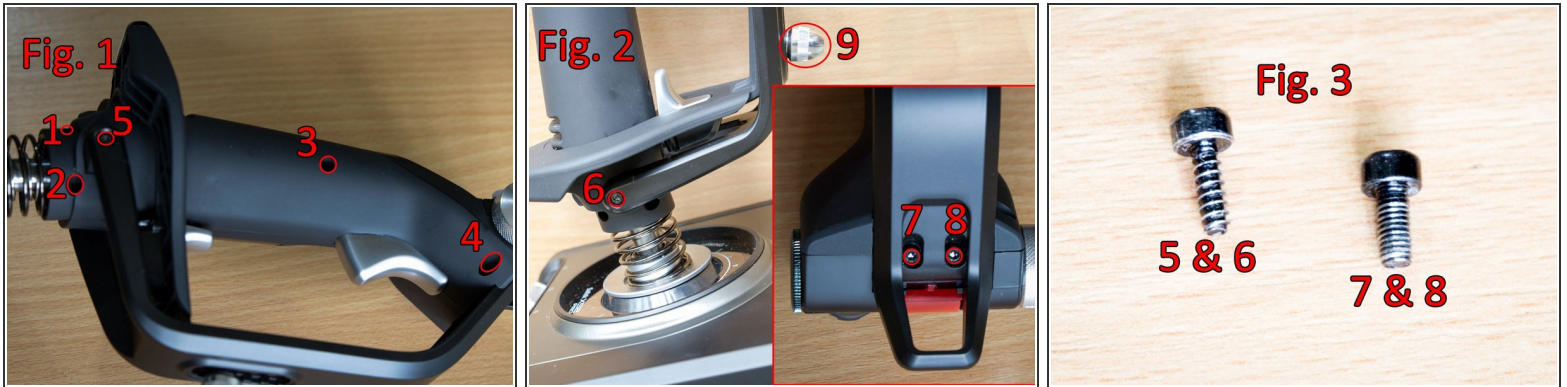
- [Phillips #1 Screwdriver](#) (1)
  - [TR10 Torx Security Screwdriver](#) (1)
-

## Step 1 — Get your tools



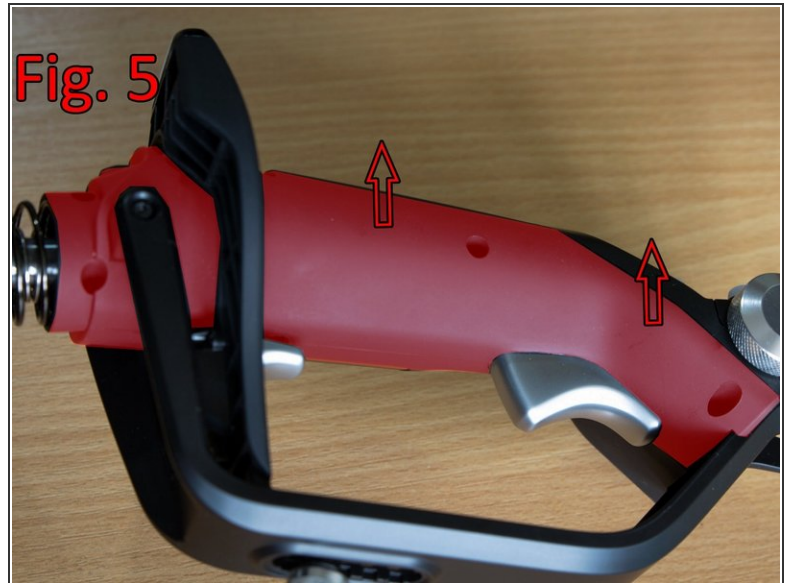
- Patience :)
- You need 2 small screw drives with a Phillips (cross) PH1 head and Torx (star) T10 head.
- A list of screw drive heads can be found here  
[http://en.wikipedia.org/wiki/List\\_of\\_screw\\_drive\\_heads](http://en.wikipedia.org/wiki/List_of_screw_drive_heads)

## Step 2 — Open the Joystick - Unscrewing



- i** Please take a moment and note how your joystick is assembled and all the parts that can be detached. I recommend taking a few photos before dismantling it.
- With the Phillips screwdriver unscrew the #1 to #4 screws in Fig. 1.
  - Using the Torx T10 head, unscrew the #5 (Fig. 1), #6, #7 and #8 screws (Fig. 2)
- !** Screws 5 & 6 have a larger thread pitch than 7 & 8, although the heads are the same. So please take care when you screw them back on (Fig. 3).
- Using your hand, unscrew #9 (Fig. 2). Please note that you cannot completely remove this screw, but you don't need to do this anyway.

### Step 3 — Open the Joystick - Removing the bracket and the cover



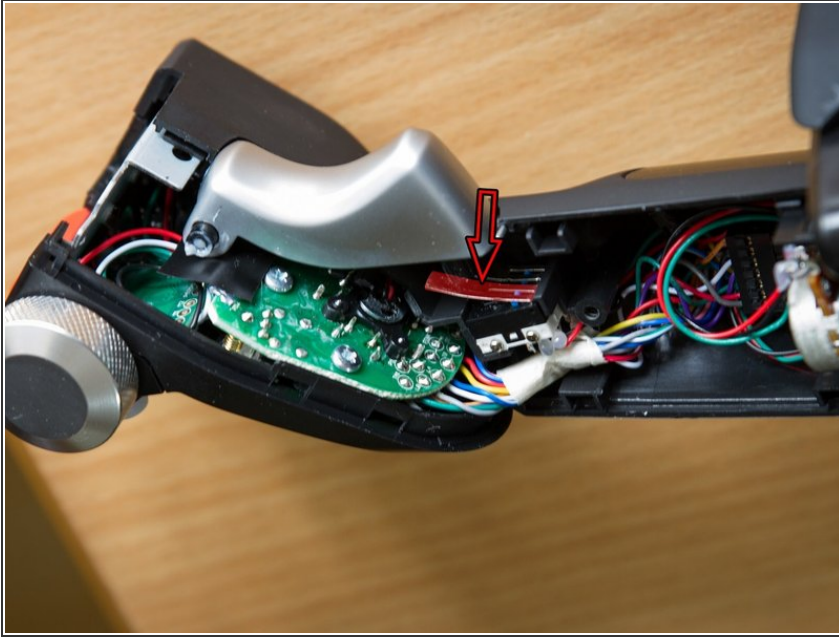
- Carefully remove the plastic bracket and the support holding the "Pinkie trigger" by pushing it towards the trigger (Fig. 4).

⚠ **DO NOT** force its removal, or you can break it.

⚠ Be careful not to break the Pinkie trigger wire!

- Remove the stick cover that will expose the contacts and wiring (Fig. 5)

## Step 4 — Fixing it



- Note the small metal plate.
- Bend it just a little from the middle so that pushing the trigger actually pushes the small **blue** switch inside the stick.
- Test the trigger before putting back the plastic cover
- ★ Remember when screwing the screws that 5&6 go to the bottom sides and 7&8 go at the top.

## Step 5



- Note: Inside the trigger there is two screws which can be used instead of either extend or retract the pin that presses the metal plate. Try adjusting this first.

To reassemble your device, follow these instructions in reverse order.