



Katadyne Hiker Water Filter Cleaning

Resolve difficulty or inability to pump.

Written By: Dylan Carey



INTRODUCTION

Has your Katadyne Hiker water filter become unable to pump or exceptionally hard to do so? Use this guide to regain functionality and ease of use.



TOOLS:

- [Katadyne Hiker Lubricant](#) (1)
 - [Soft Bristled Toothbrush](#) (1)
-

Step 1 — Katadyne Hiker Water Filter Cleaning



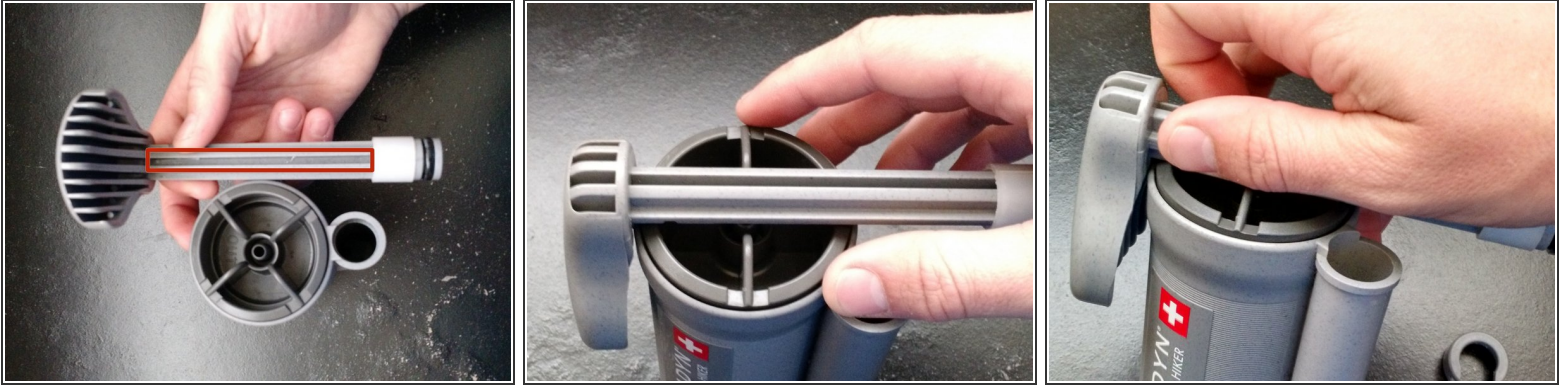
- Remove the "snap fit" guard by pulling directly away from the filter body.

Step 2



- Remove the pump handle by pulling it completely out of the shaft.

Step 3



- Use the pump handle to remove the filter cap.
 - Place the horizontal groove of the pump handle depicted in image 1 onto the filter fins.
- Press the pump handle firmly against the fins and turn the filter counter clockwise.
- Once unscrewed, remove the filter completely from the body.

Step 4



 Only perform this step if solid particles are evident on the outside of the filter.

- Lightly brush the entire filter with a soft bristled toothbrush under running water.

Step 5



- Replace the filter inside the filter body and screw clockwise until tight.

Step 6



- Lubricate the pump handle O-ring extensively with the Katadyne lubricant (sold with pump).

Step 7



- Replace the pump handle inside the pump handle shaft.

Step 8



- Replace the "snap-fit" guard by pushing directly toward the filter body.

If difficulty pumping persists, a new filter is required.