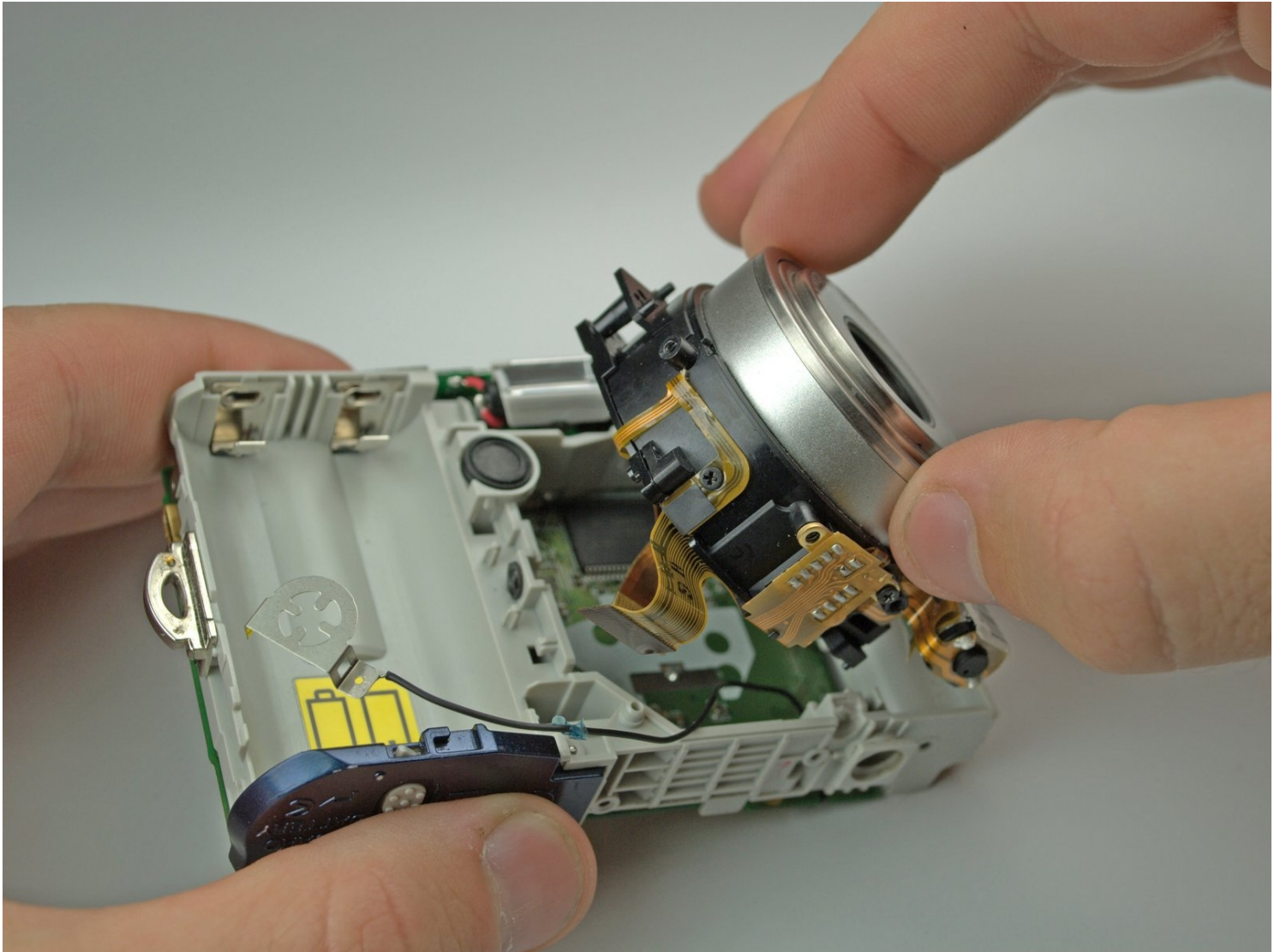




Nikon Coolpix L18 Lens Replacement

In this guide, we will give you step-by-step...

Written By: Andrea Govea



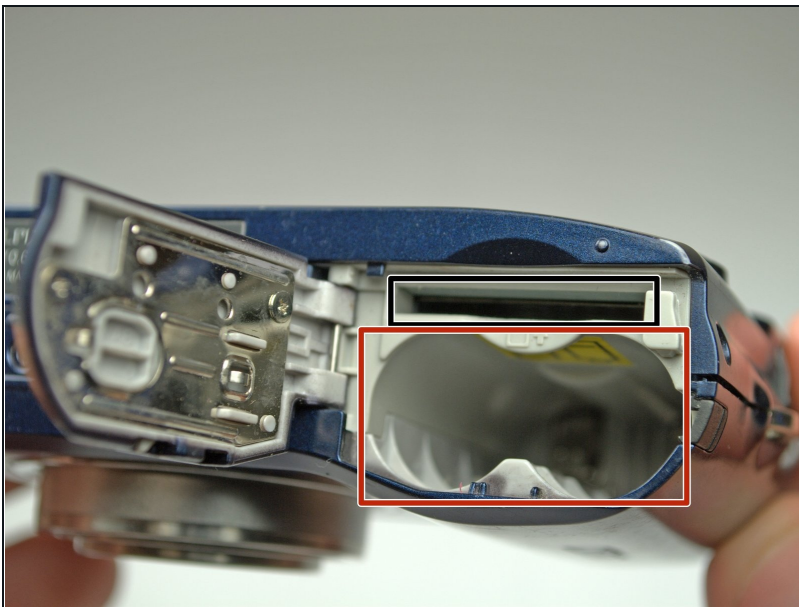
INTRODUCTION

In this guide, we will give you step-by-step instructions on how to detach the lens from the logic board so that it can be replaced or repaired.

TOOLS:

Phillips #00 Screwdriver (1)

Step 1 — Back Cover



- Remove the memory stick from the camera.
- Remove the batteries from the camera.

Step 2



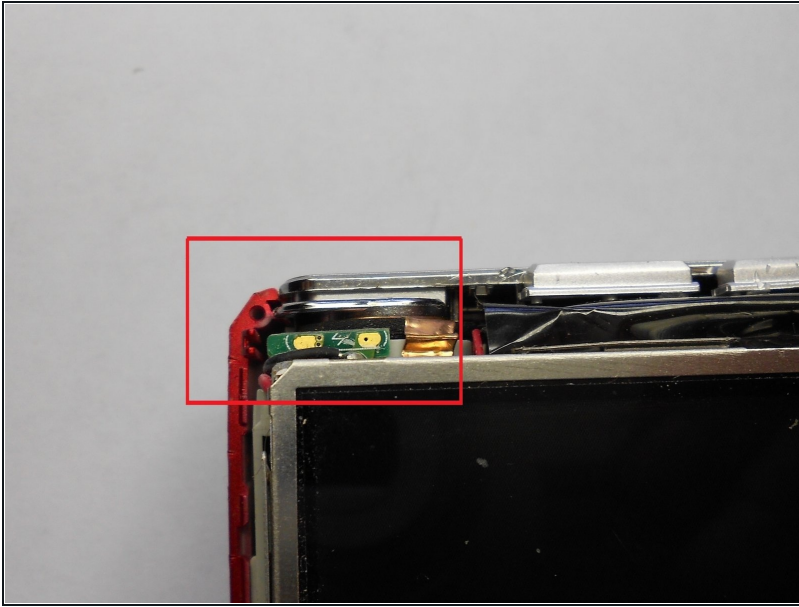
- Remove all six 4.3mm silver screws along the perimeter of the camera using the Phillips #00 screwdriver.
- There is one screw hidden under the AV cover that also needs to be removed.

Step 3



- Pry the back cover from the left side of the camera. Remove the cover gently.

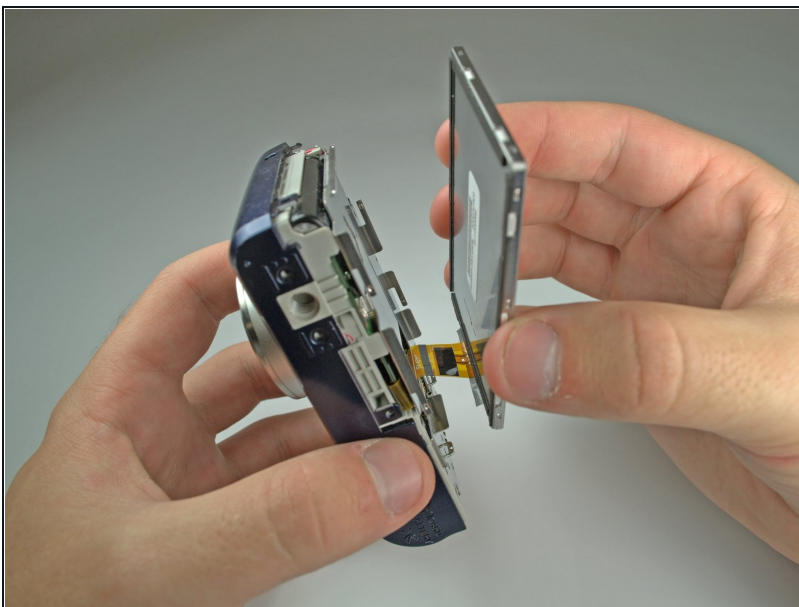
Step 4 — LCD Screen



⚠ This is where energy for the flash is stored. Even with batteries removed, if you touch these connections, you can be shocked, depending on if the flash capacitor has a stored charge. It may not have a stored charge, but work around this assuming it does.

i Newer cameras of decent quality usually have a bleeder resistor to drain the flash capacitor. This may not work anymore and the flash capacitor may still have a charge.

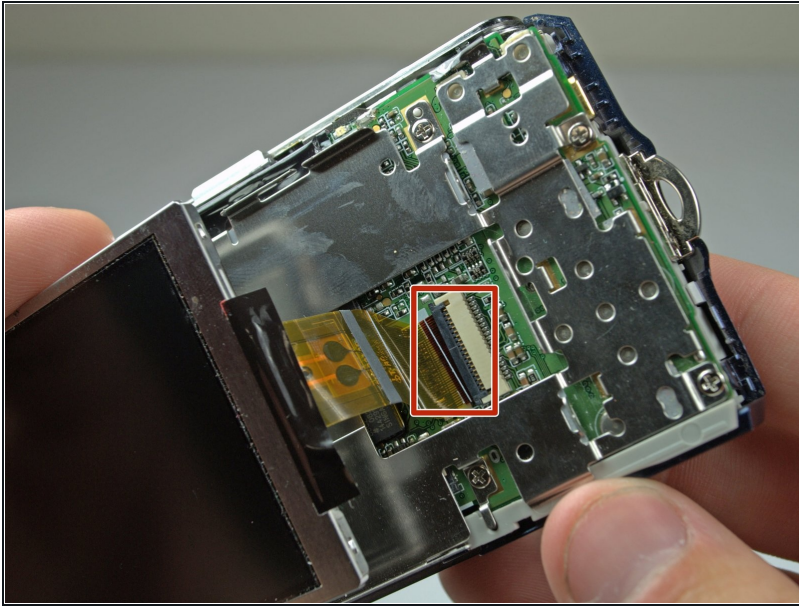
Step 5



- Remove the tape on the right side of the LCD screen.
- Gently lift the LCD screen from its base.

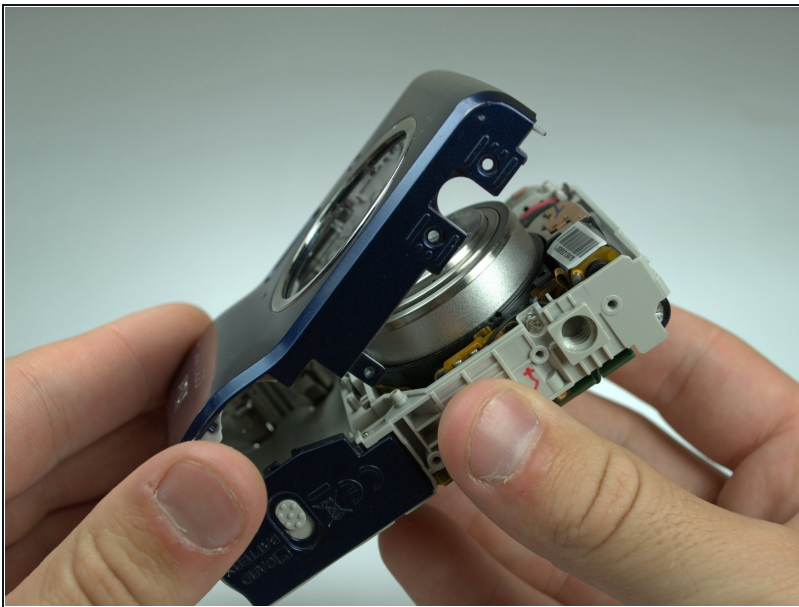
⚠ Don't tug on the screen because it is still connected to the motherboard.

Step 6



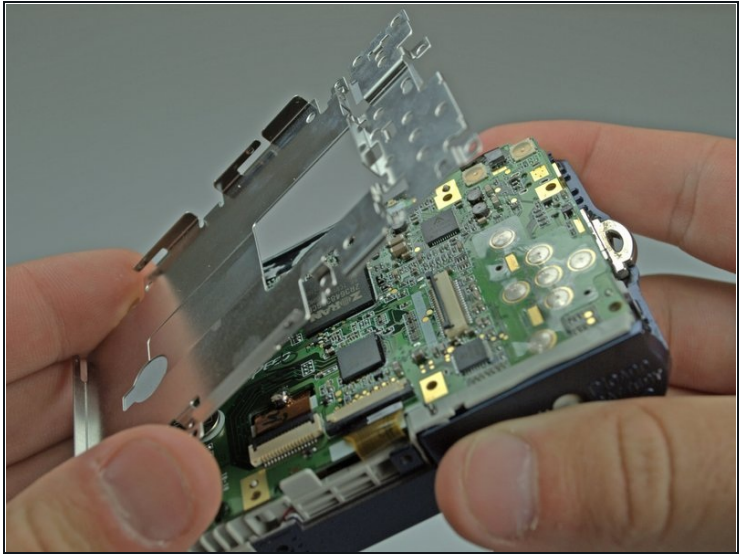
- Lift the black latch connecting the LCD ribbon to the motherboard.
- Gently pull the LCD ribbon out.

Step 7 — Front Cover



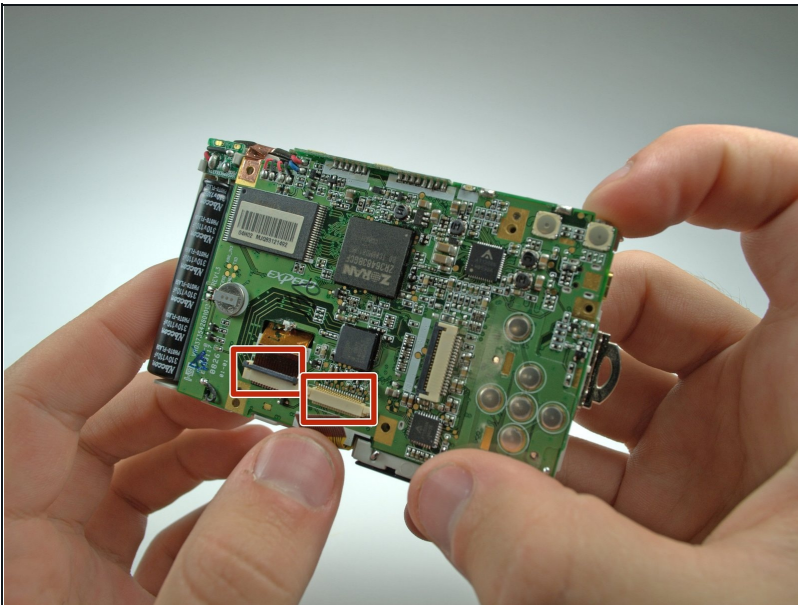
- Pry back the front cover of the camera starting from the right side.

Step 8 — Lens



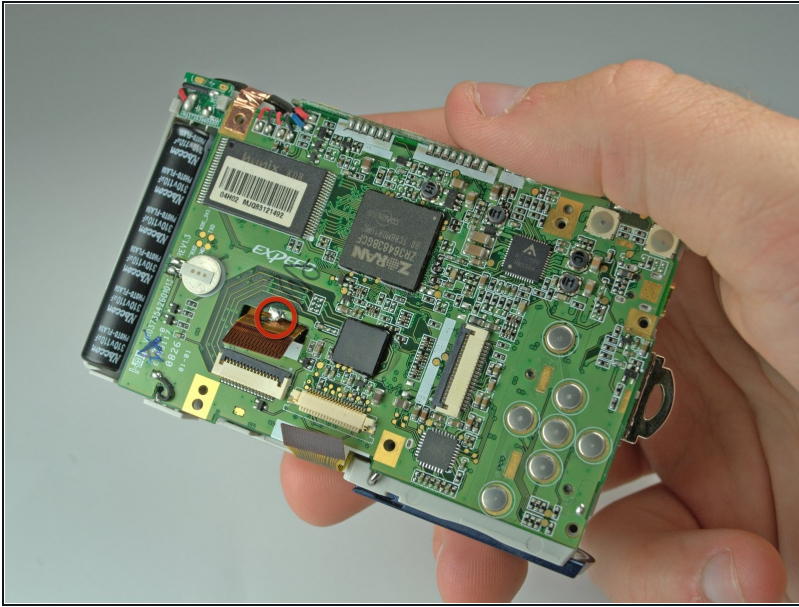
- Remove the 6 Phillips #00 screws anchoring the LCD base to the motherboard.
- Remove the LCD base plate.

Step 9



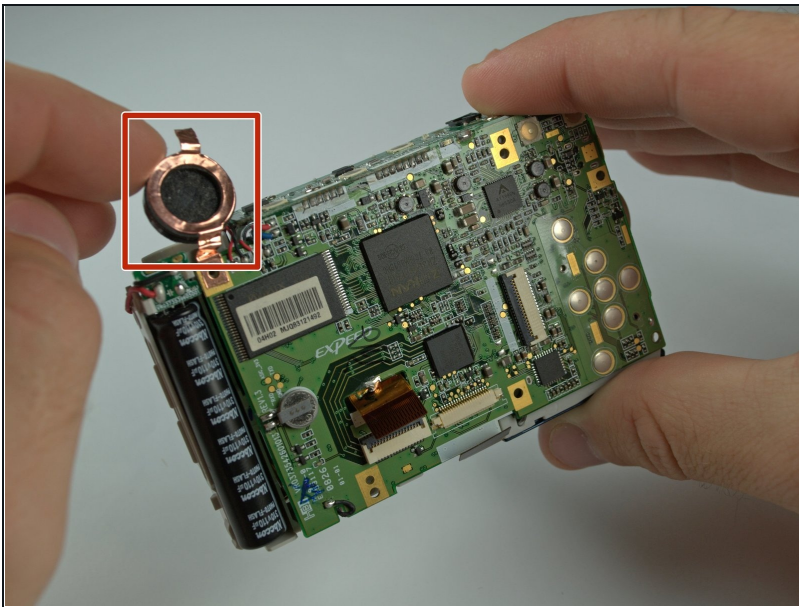
- Lift the black latch connecting the LCD ribbon to the motherboard.
- Gently pull the lens ribbon out.

Step 10



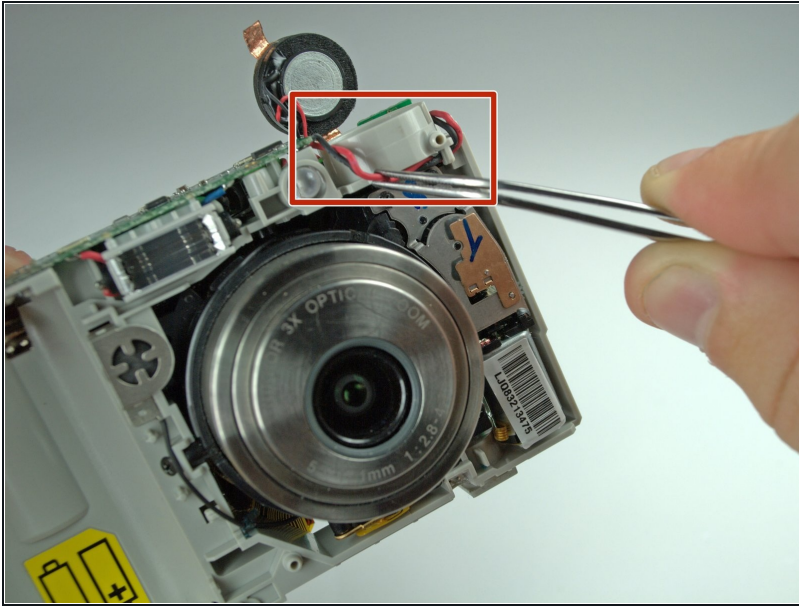
- Desolder the connection of the motherboard to the lens ribbon using a soldering iron and desoldering wick.

Step 11



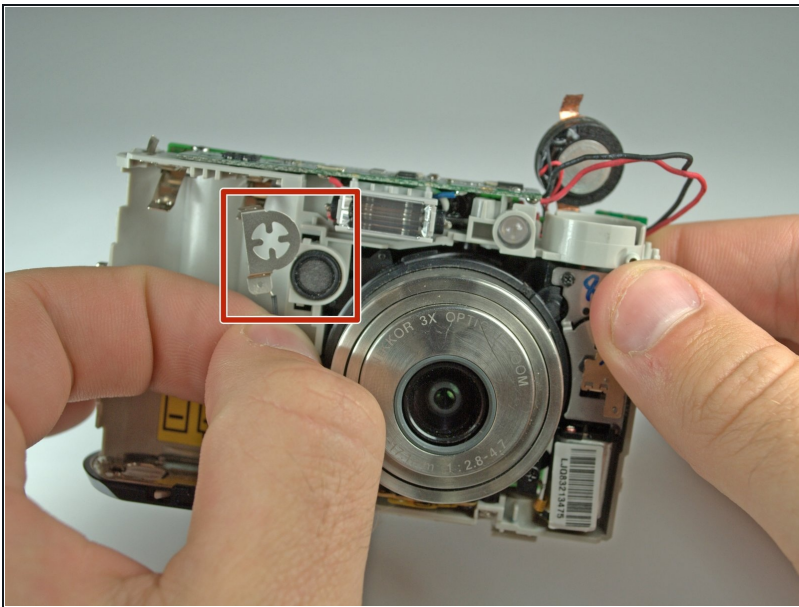
- Lift up the black and copper covering on the left side of the camera.

Step 12



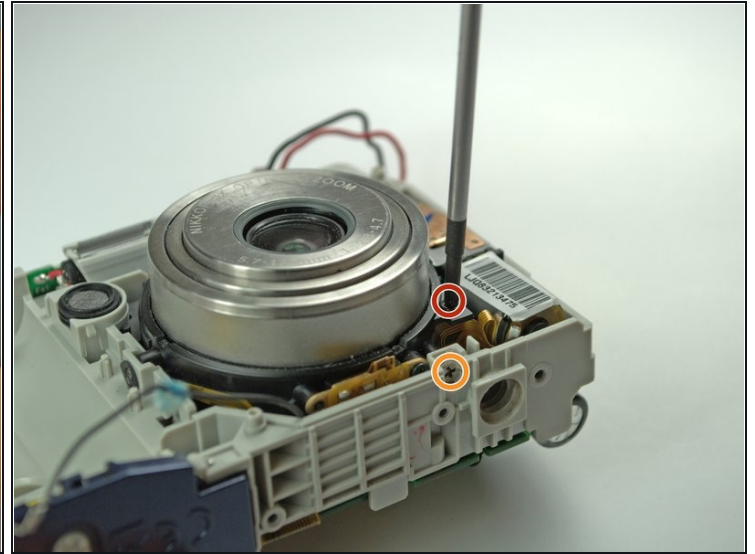
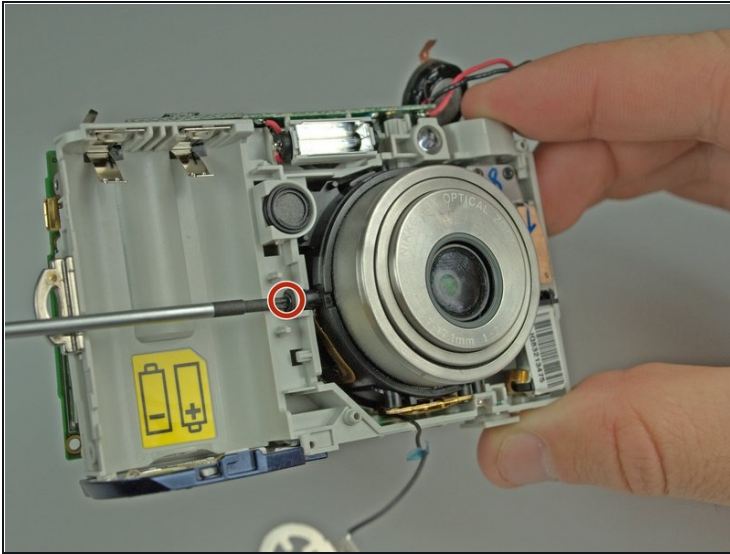
- Pull the wiring at the top right of the camera away from the lens with [tweezers](#).

Step 13



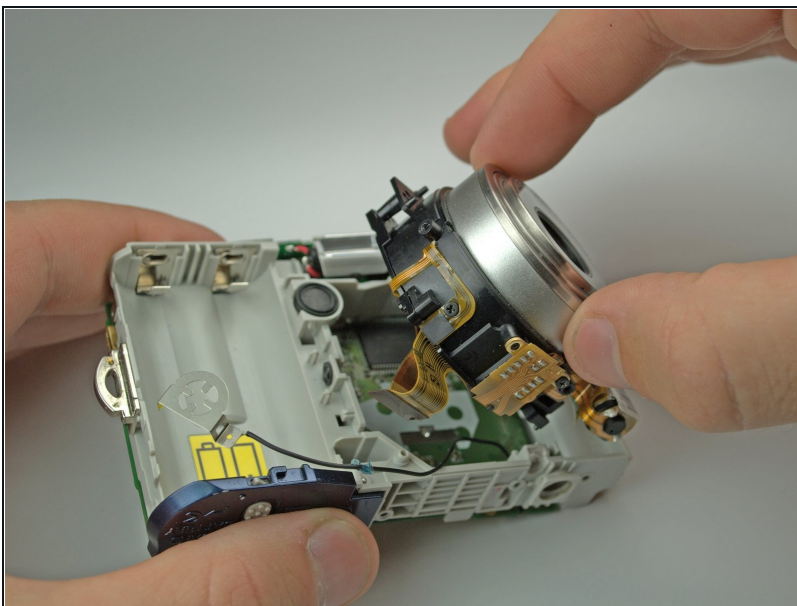
- Remove the cross-hair shaped wire cap to the left of the lens.

Step 14



- Remove the 3 screws holding the lens to the camera frame.
 - Two 3.8mm black Phillips #00 screws on the sides of the lens.
 - One 4.6mm silver Phillips #00 screw on the bottom of the lens.

Step 15



- There is a screw behind flash tube holding lens. Remove it, then gently pull the lens out. Be sure that the lens's ribbon clears the motherboard.

To reassemble your device, follow these instructions in reverse order.

