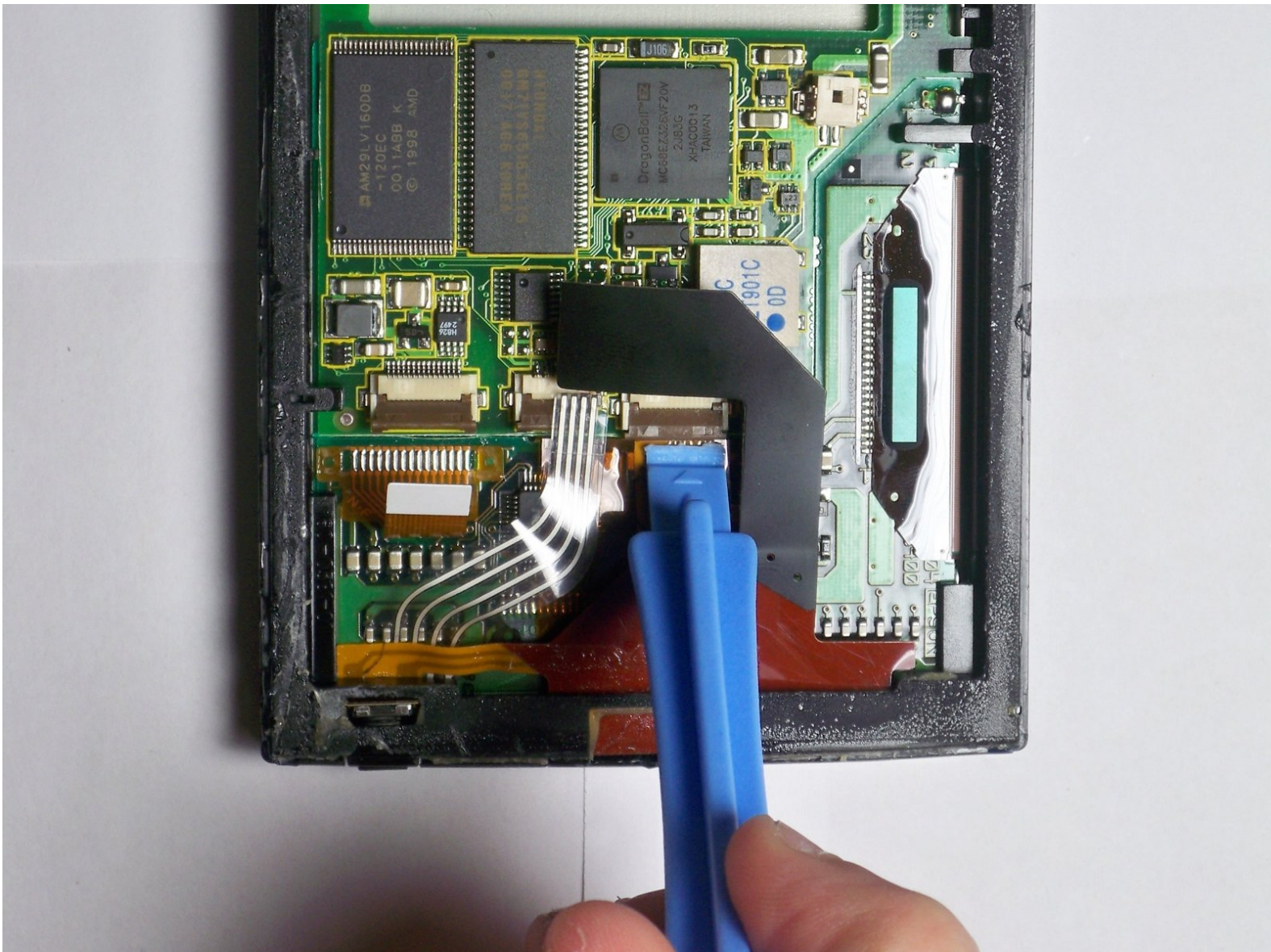




# IBM WorkPad c3 Motherboard Replacement

Instructions to remove the Logic Board from the IBM WorkPad c3.

Written By: Emily Falkenstein



---

## INTRODUCTION

This guide will show how the motherboard for the IBM WorkPad c3 may be removed. This is a fairly simple process, once the rest of the WorkPad has been disassembled.

---

### TOOLS:

- [iFixit Opening Tools](#) (1)
-

## Step 1 — Back Case



- Turn the device over so that the screen is facing down.

⚠ In the next step the device will be heated, so the screen must be turned over to prevent heat damage to the LCD/Digitizer.

## Step 2

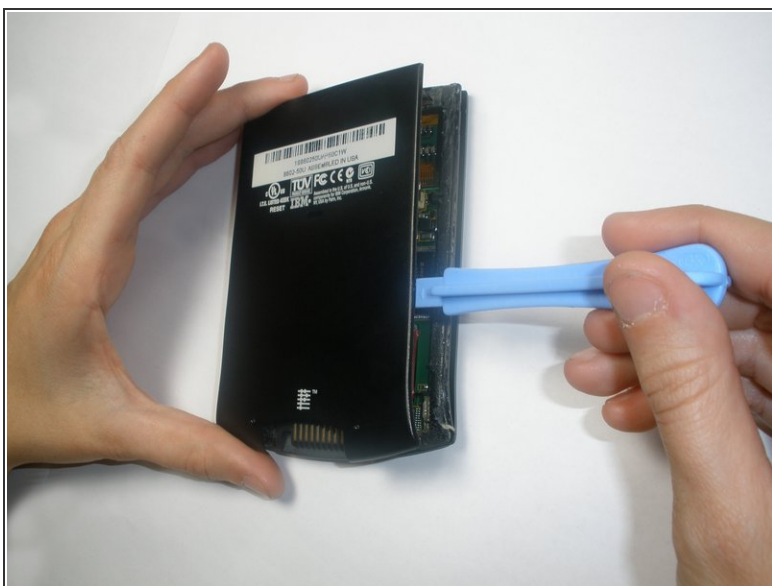


- Using a hair dryer, slowly heat the edges of the WorkPad.
- Spend at least one minute heating each side of the device. This will melt the glue holding the case together, and allow it to be removed.

⚠ Be sure not to touch the device directly after heating as it will be extremely hot. Use a towel or oven mitt to grab it.



## Step 3



- Use a plastic opening tool to pry the back case from the WorkPad.
- ⓘ If the rear cover is not coming off very easily, you probably need to reheat the case in order to sufficiently melt the glue.

## Step 4 — Front Case



- Turn the device over, so that the screen is laying on a flat surface.


## Step 5




- If the back case has already been removed, carefully place it on the WorkPad to protect the circuitry inside from the heat.
  - Using the hair dryer, slowly heat the edges of the device. Spend at least 1 minute on each side, thoroughly heating the case.
- ⚠ The LCD/Digitizer combo is very sensitive to heat, and can easily be ruined if it is directly exposed to the hair dryer. Verify that the screen is face down.

## Step 6



 The device will be extremely hot. Use a towel or oven mitt to grab it.

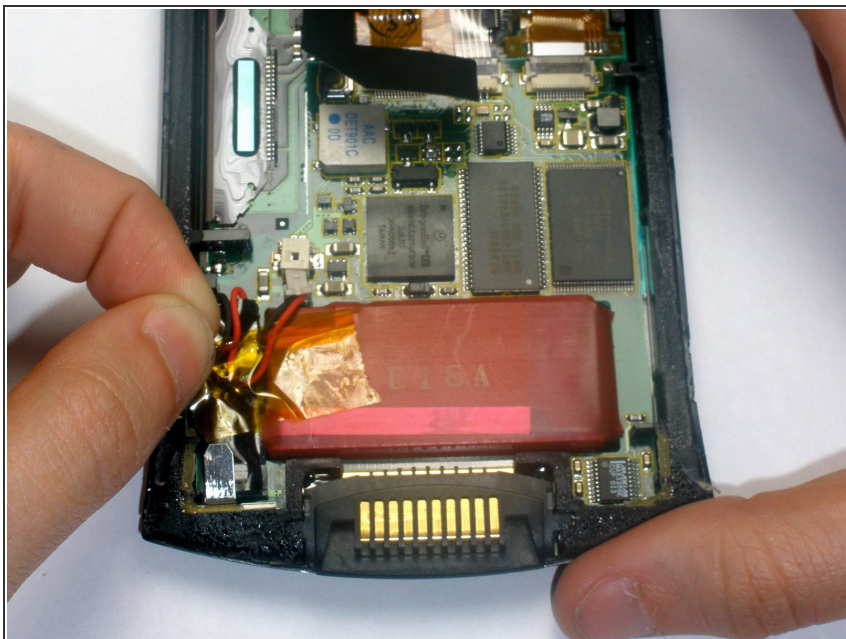
- Using the Plastic Opening Tools, take the front of the case off.

 If the case is difficult to remove, try repeating step 2.

- The power button at the top of the device will be loose once the front part of the case is removed.



## Step 7 — Battery



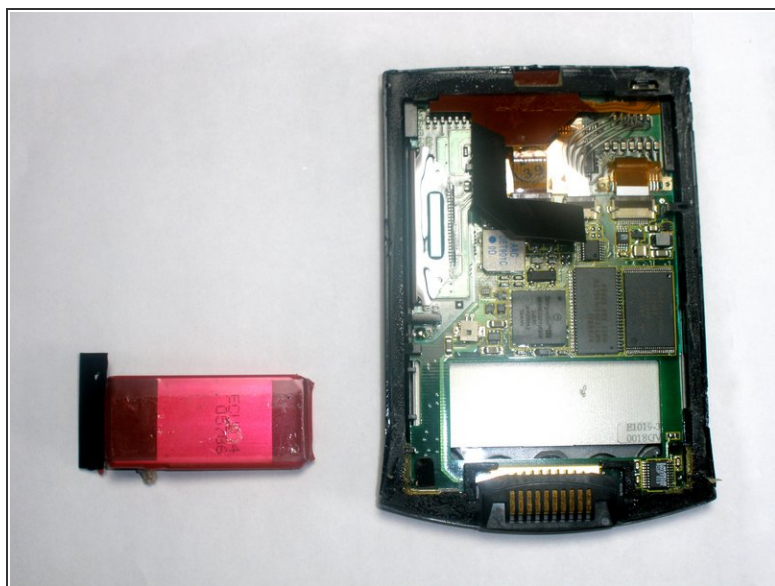
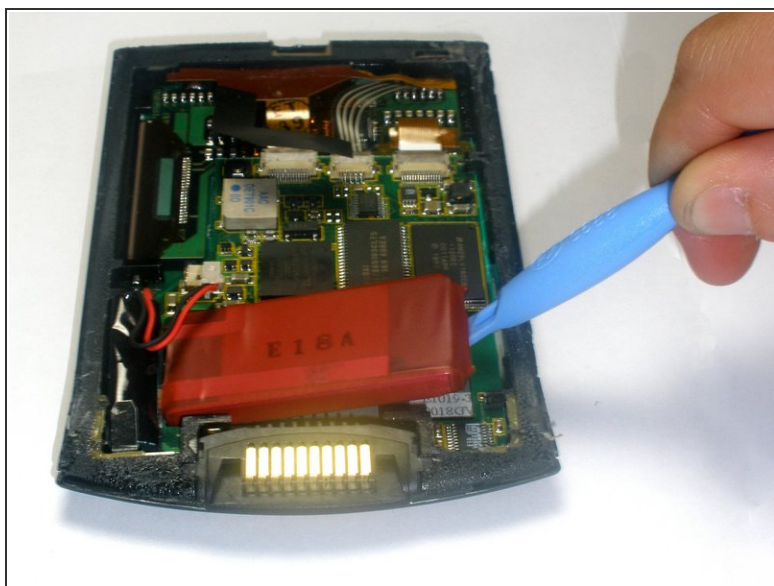
- Remove the yellow tape that is covering the battery connector

## Step 8



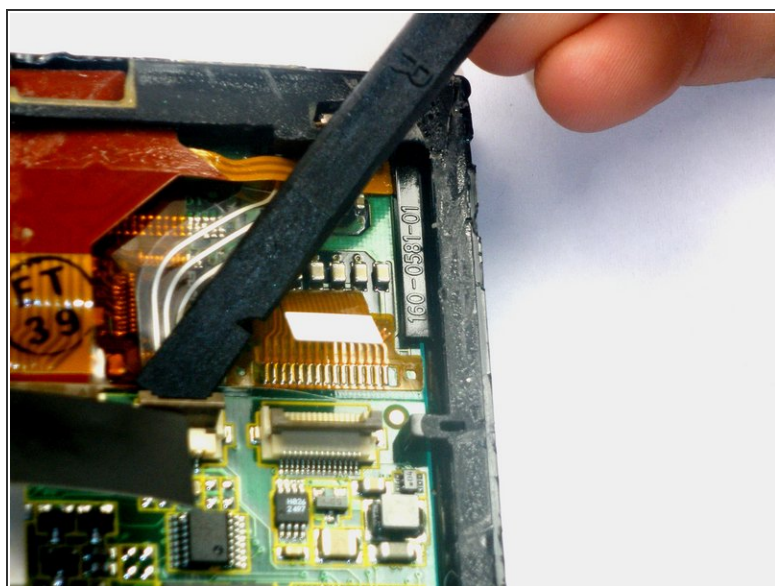
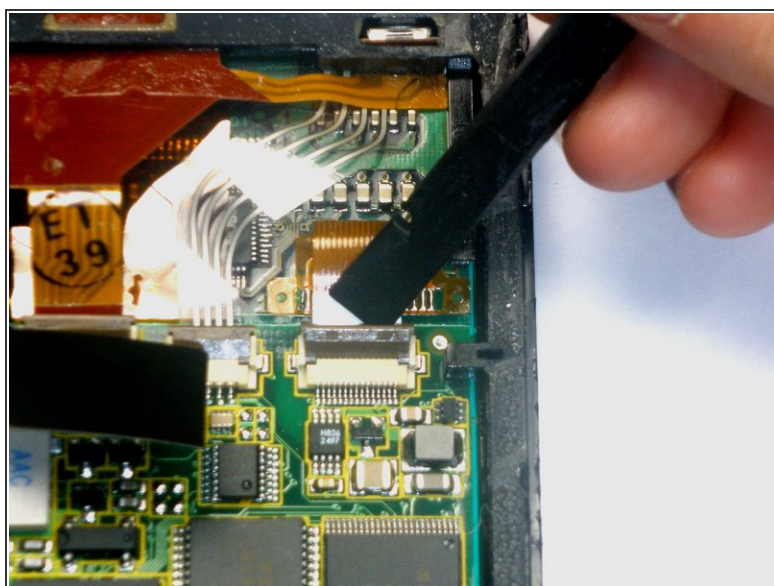
- Using the tweezers, carefully disconnect the battery cable from the port

## Step 9



- Using the plastic opening tools, lift the battery out of the case
- ⓘ The battery is secured with adhesive and it will take some effort to remove

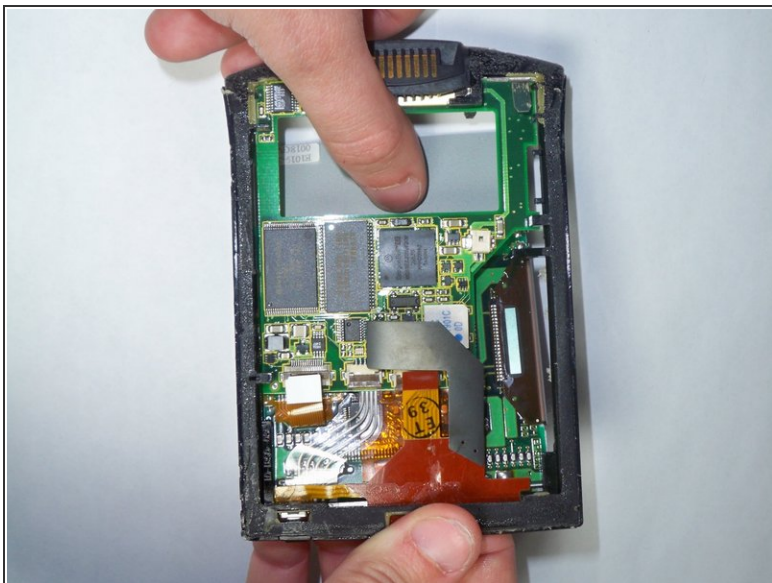
## Step 10 — LCD



- Using the spudger lift the tabs holding the LCD/Digitizer combo cables to the WorkPad.

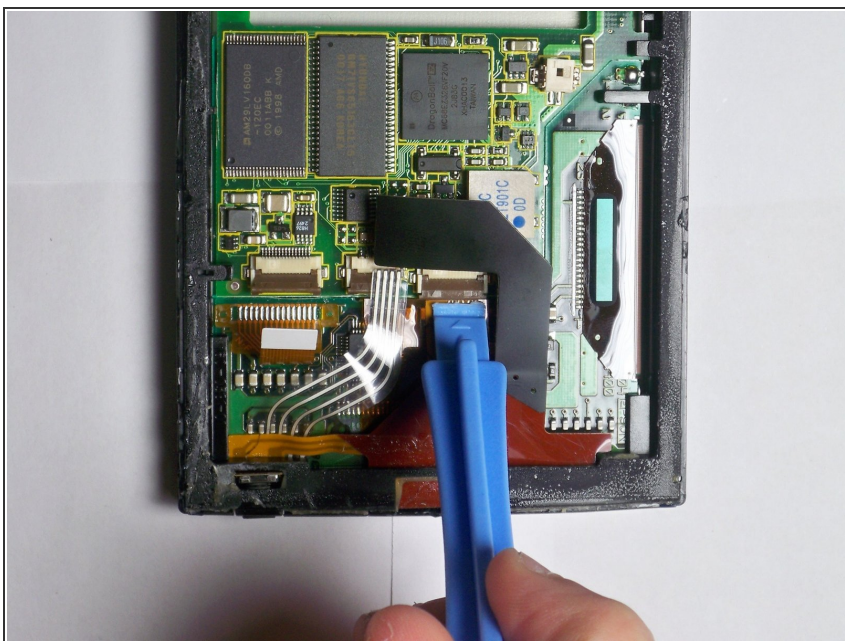


## Step 11



- Using your thumb, press down gently on the back of the LCD.
- The LCD will disconnect and fall out of the case, so be sure to have your hand waiting for it.

## Step 12 — Motherboard




- Using the plastic opening tool, lift the clip holding the motherboard cable.

## Step 13



- Gripping the motherboard as shown, lift up slightly and pull outward.

 Small plastic tabs hold the motherboard down. Lifting too hard will break these off, and the motherboard will be loose upon replacement.

To reassemble your device, follow these instructions in reverse order.