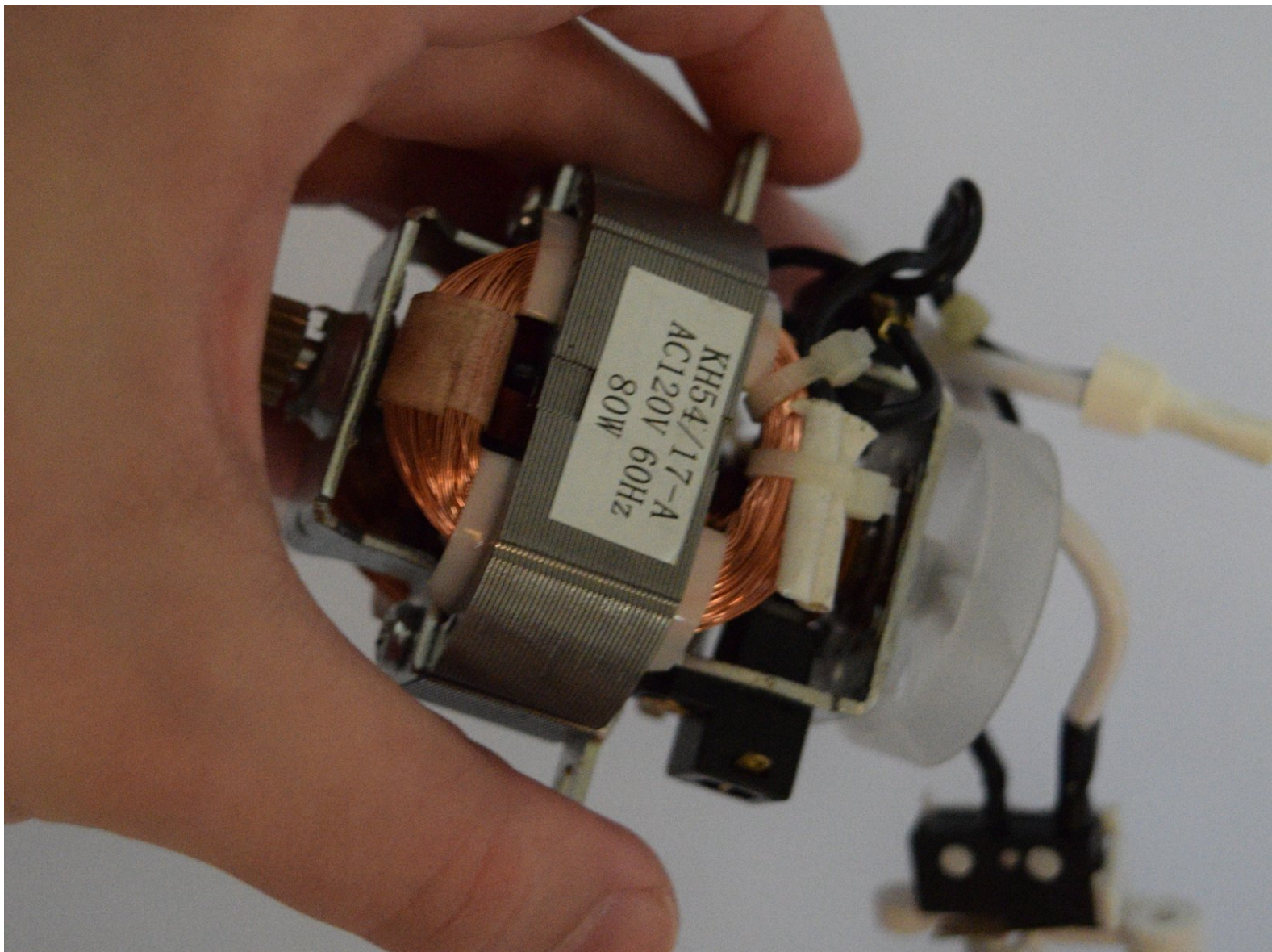




Sunbeam Snow Cone Maker Motor Replacement

This guide will show you how to dismantle the Sunbeam Snow Cone Make, remove the motor, and replace it.

Written By: Kirsty van Dam



INTRODUCTION

Is your Sunbeam Snow Cone Maker unable to make the ice shavings that it usually does? Then you might have an issue with the motor. If so, this guide will be useful for removing and replacing a broken motor on the Sunbeam Snow Cone Maker.

The Sunbeam Snow Cone Maker motor is essential for creating the fluffy ice shavings for the perfect snow cone. A faulty motor will make it difficult for the machine to grind any ice at all.

Before using this guide, be sure that there are no blockages in the machine that could interfere with the flow of ice shavings. In addition, make sure to power off and unplug the machine completely from any external power source before proceeding with the repair.



TOOLS:

- [Phillips #00 Screwdriver](#) (1)
 - [TR8 Torx Security Screwdriver](#) (1)
 - [Spudger](#) (1)
-

Step 1 — Dasher



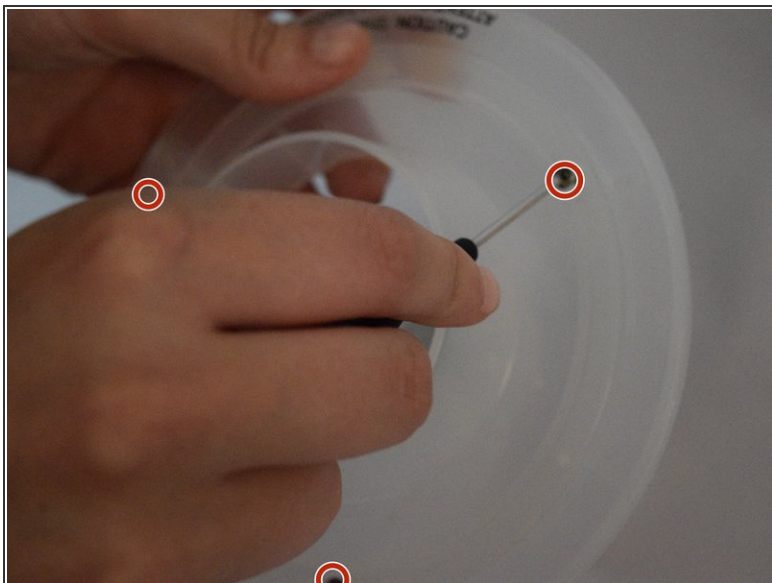
- Push the button on the back to release the lid. (Missing on this example device.)
- ⓘ In the photo on the device page it is red.

Step 2



- Unscrew the dasher by holding it in the middle and turning clockwise.
- ⓘ You will have to spin it quite a bit.
- Remove the dasher.
- ⓘ Alternately, you can continue to step 3 to further disassemble the dasher components.

Step 3



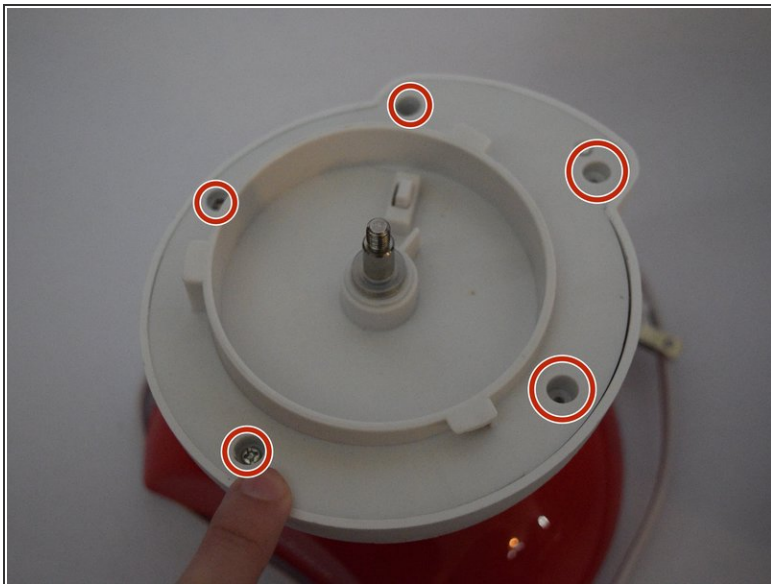
- To take the dasher apart, remove the three 5.5 mm Phillips #00 screws embedded in the plastic.
**The 3rd screw is behind the hand in the picture
- Carefully pull the two pieces apart.
- When you've finished taking apart the dasher, you should have two parts that are shown in the second picture in this step.

Step 4 — Motor



- After removing the dasher, turn the device so that you can see the “lock” and “unlock” symbols on the back.
- Twist the casing so that it is in the unlocked position and remove it from the bottom half of the machine.

Step 5



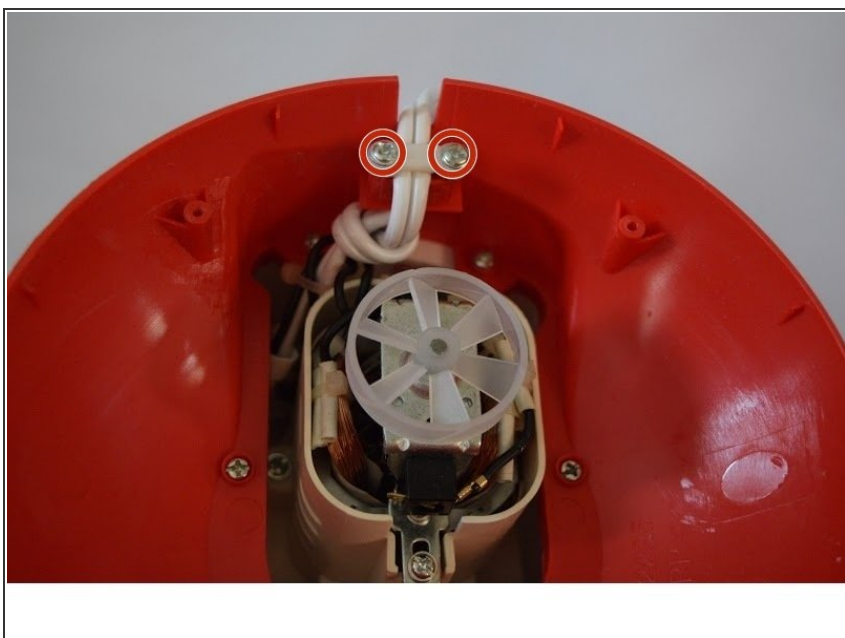
- Unscrew the five screws and remove the piece labeled in the picture. You should now be able to see the motor.

Step 6



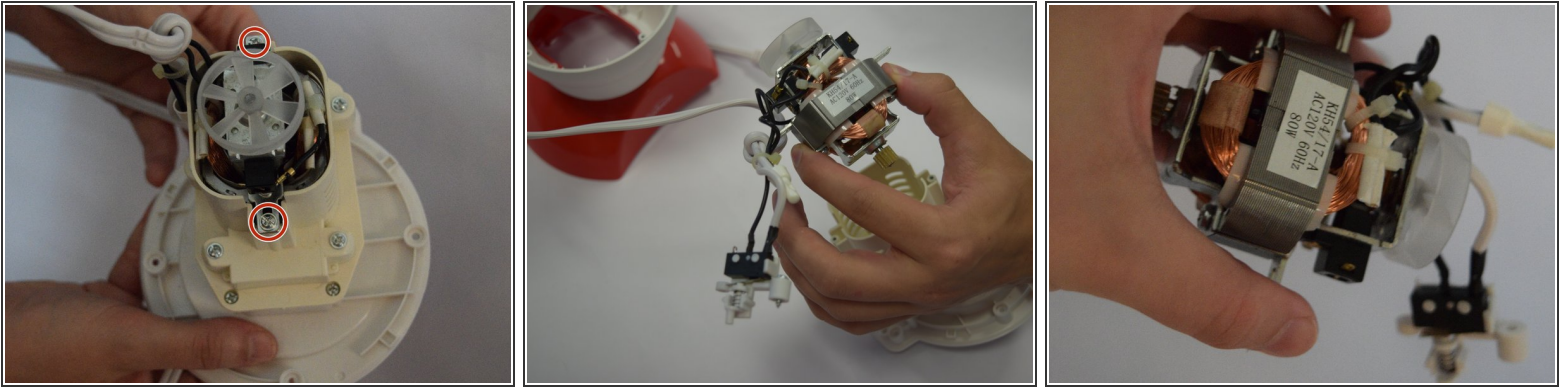
- Lay the device on its side.
- Remove the 4 gray rubber “feet” by pulling them straight off.
- Remove the four 5.5 mm Phillips #00 screws that are under them.
- Remove the bottom plastic cover.

Step 7



- Remove the two 5.5 mm Phillips #00 screws holding a bracket to keep the cord in place.
- Remove the the bracket so the chord has room to move.

Step 8



- Remove the topmost two 5.5 mm Phillips #00 screws that hold the motor in the case.
- Remove and replace the motor.

To reassemble your device, follow these instructions in reverse order.