



Hisense Sero 8 Front and Back Camera Set Replacement

If you are experiencing issues with the camera...

Written By: Katherine



INTRODUCTION

If you are experiencing issues with the camera on your Hisense Sero 8 device due to prolonged use, you can fix it by replacing the front and back camera sets. This guide will help you to repair the camera set. Before you begin, please check the [troubleshooting guide](#) to see the symptoms of your device.

TOOLS:

[iFixit Opening Tool](#) (1)

[Spudger](#) (1)

[Tweezers - Pro/ESD/Angled](#) (1)

Step 1 — Front and Back Camera Set



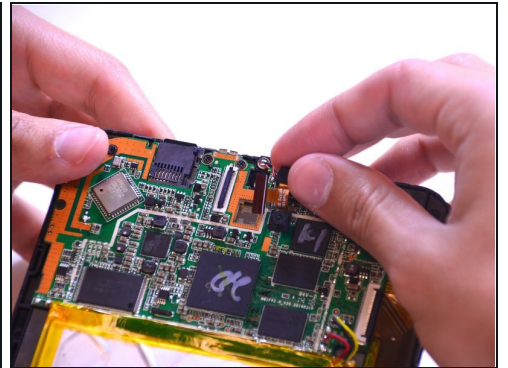
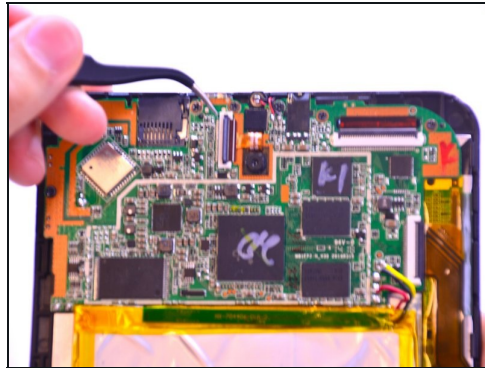
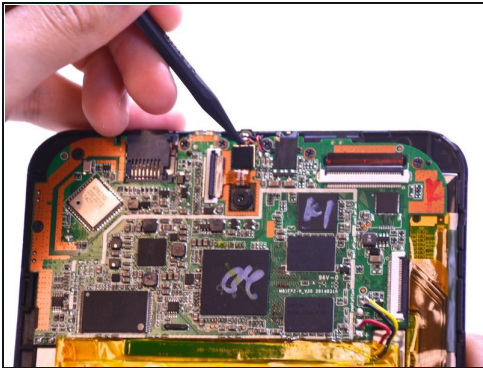
- Use an opening tool to pry open a corner of the device, then slide the tool down the side of the device to completely open it.

Step 2



- Use your fingers to pull the latch upwards to unlock the ribbon cable.

Step 3



- Use the pointed end of the spudger to lift the camera from the motherboard.
- Use [tweezers](#) to carefully pull out the camera set.

To reassemble your device, follow these instructions in reverse order.