



# Whelen Slimlighter Super-LED Teardown

The Whelen Slimlighter Super-LED taken apart piece by piece.

Written By: V3nture



---

# INTRODUCTION

Guides you in taking apart the Slimlighter Super-LED for maintenance or just pure curiosity :)

---



## TOOLS:

- [Metal Spudger](#) (1)
  - [Phillips #2 Screwdriver](#) (1)
-



## Step 1 — Whelen Slimlighter Super-LED Teardown



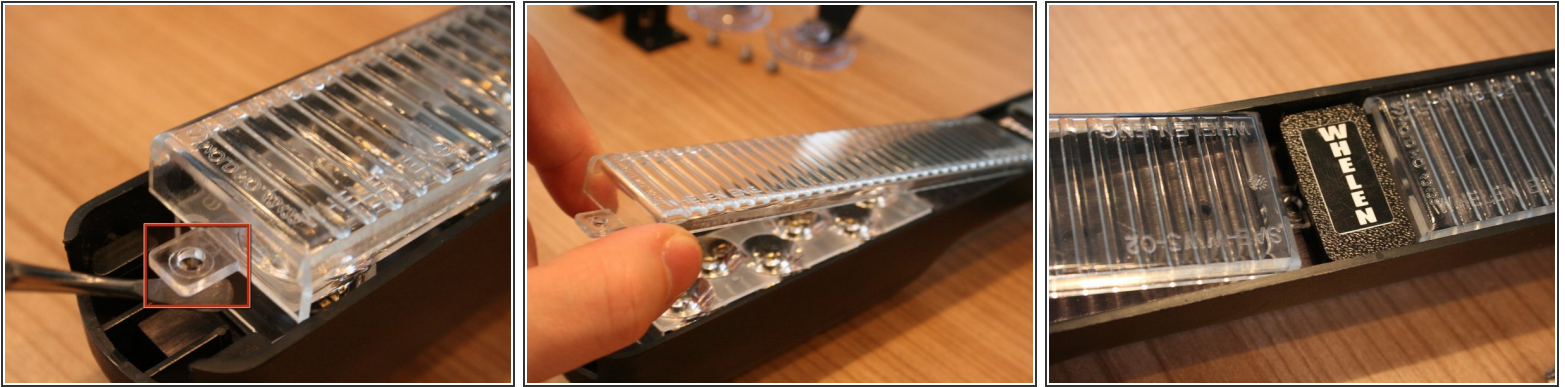
- This is Whelen's second generation Slimlighter. Whilst the first generation had multiple 5mm LED's, this generation Slimlighter has 'only' 12 TIR6 style LED's.
- Enough chatter, let's take it apart :)

## Step 2



- Optionally one can first take off the suctioncup brackets. They are held in place by two Philips screws.
- Next you can take off the retaining brackets. They are held back by a little notch that has to be lifted with a spudger. Repeat this step for the other side.
- Once the notch is lifted pull the bracket away from the light as shown.

### Step 3



- Once the brackets are released the light can easily be dissassembled. Begin by lifting the diffuser lens up as shown.
- One can also have clear lenses here, the procedure is the same.
- Note that the lens has a similar notch on the other side, underneath the Whelen logo. Carefully pull the lens out from underneath, don't force anything or it will break.

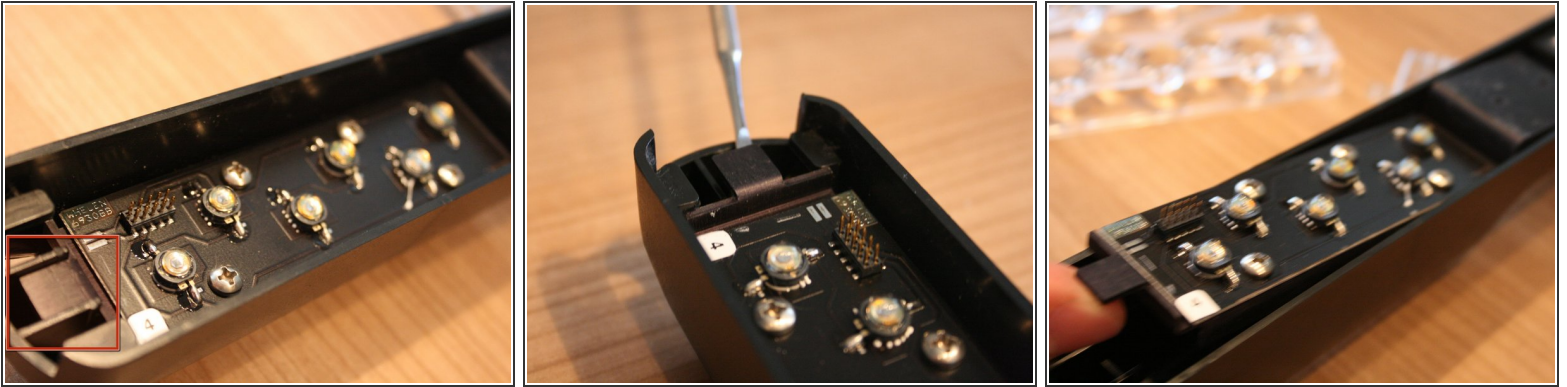
### Step 4



- With the diffuser lenses removed the optics are exposed. They are not secured by anything so carefull take them out as shown
- Nifty little optics here, kudo's to Whelen.
- Try activating the light now, see the differences with and without these optics

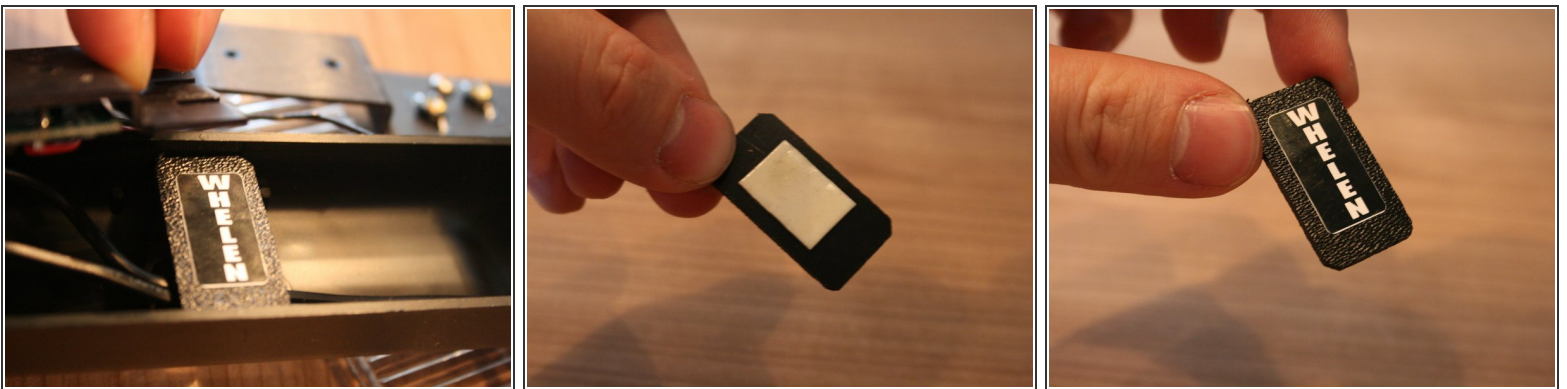


## Step 5



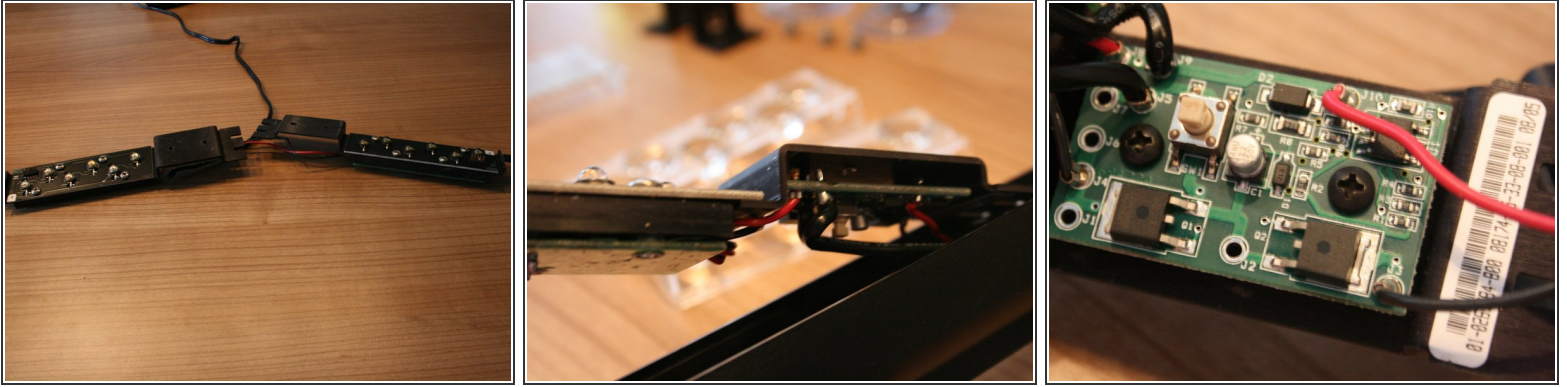
- Now you can CAREFULLY take out the LED assembly. It's attached to a metal heat dissapating bracket. CAREFUL with the wiring. Note that the bracket is retained by the plastic housing. It might need some help before it gives way.

## Step 6



- The wires are held back /retained by a stickon Whelen logo. The logo can easily be removed, just tear it off carefully.

## Step 7



- Once the Whelen logo tab is removed the light comes apart completely.
- Take out the two metal brackets holding the light.
- Note that one of the brackets holds (part of) the flasher assembly.

## Step 8



- If desired, take out the six Philips screws to remove the LED circuit board from the bracket.
- Note that the rear circuit board is held back by the same screws.
- The LED board can easily be replaced by any other TIR6 board, any color (as far as I could check!)
- Note that there is cooling paste between the LED board and the bracket. Make sure you replace it.



## Step 9



- All done! No more steps required :)

To reassemble your device, follow these instructions in reverse order.