



Sony Cyber-shot DSC-HX1 Lens Assembly Replacement

Replace the lens assembly for the Sony Cyber-shot DSC-HX1 by following this guide.

Written By: Brianna Greenlaw



INTRODUCTION

To take out and replace the lens assembly, you must first completely remove the central motherboard and all other internal components.



TOOLS:

- [Phillips #00 Screwdriver](#) (1)
 - [iFixit Opening Tools](#) (1)
-

Step 1 — Battery



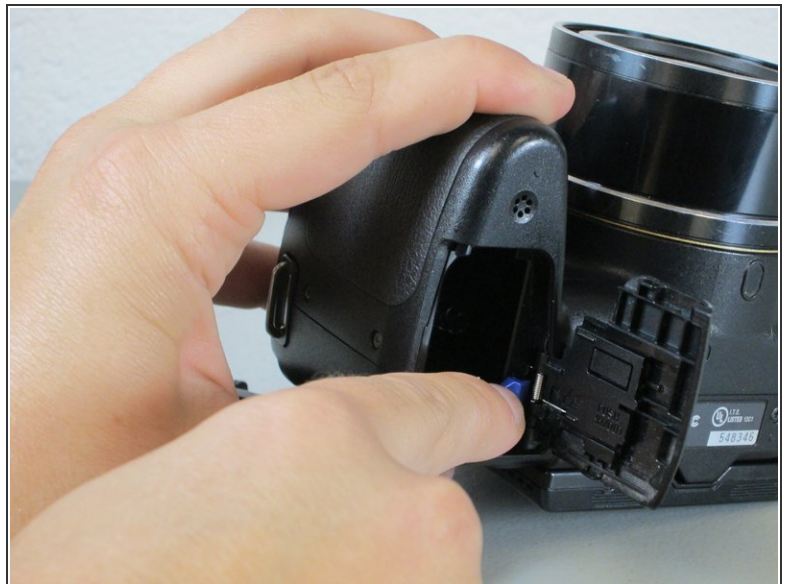
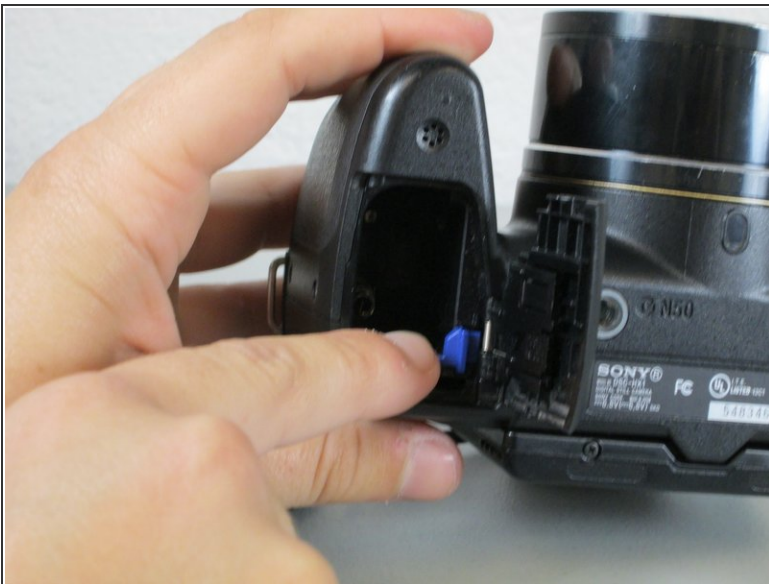
- ⚠ Make sure the surface you place the screen on is clean of debris and dust. Otherwise you risk scratching your screen.
- Place the camera with the bottom facing you and the lens facing up.

Step 2



- Push down and away from the camera to the left on the indicated indentation in the battery cover. The compartment should slide open as shown.

Step 3



- Push the blue tab towards the camera body to the right, while simultaneously pulling out the battery.
- ⓘ The battery is not shown here. However, normally the battery would be in the displayed compartment.

Step 4 — Motherboard



- Close the battery cover by pushing the cover inwards and sliding it to the left to allow more maneuverability when disassembling other parts of the camera.

Step 5



- Unscrew the four #00 4.0 mm Phillips screws on the bottom of the camera.

Step 6



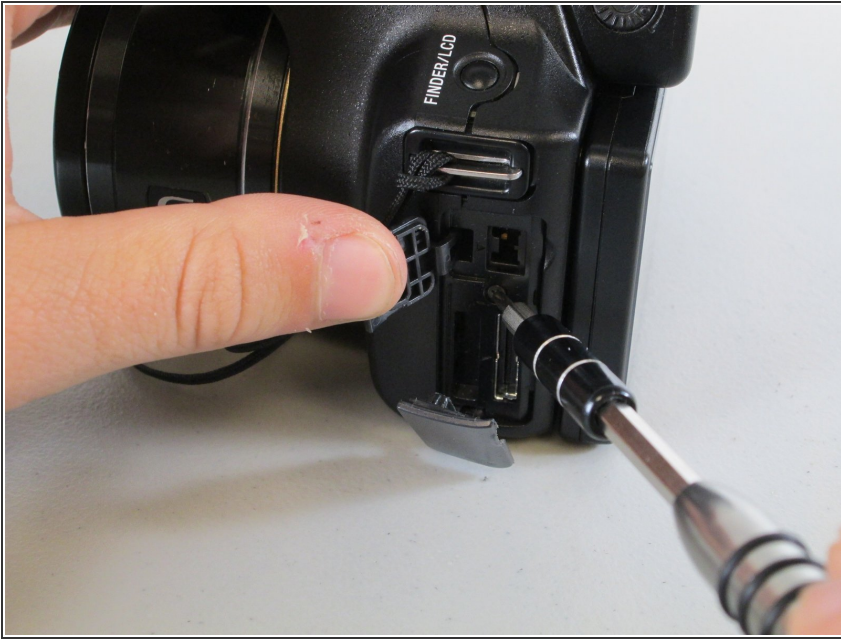
- Remove the two #00 4.0 mm Phillips screws shown on the side of the camera.

Step 7



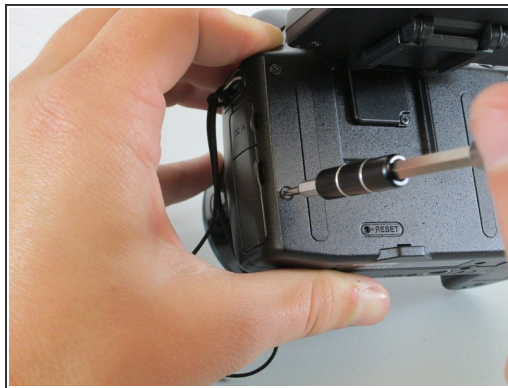
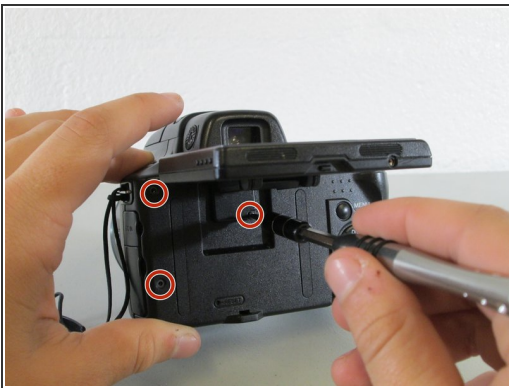
- Unscrew the #00 4.0 mm Phillips screw on the top next to the view finder.

Step 8



- Pull open the plastic port covers on the side of the camera.
- Remove the revealed #00 4.0 mm Phillips screw.

Step 9



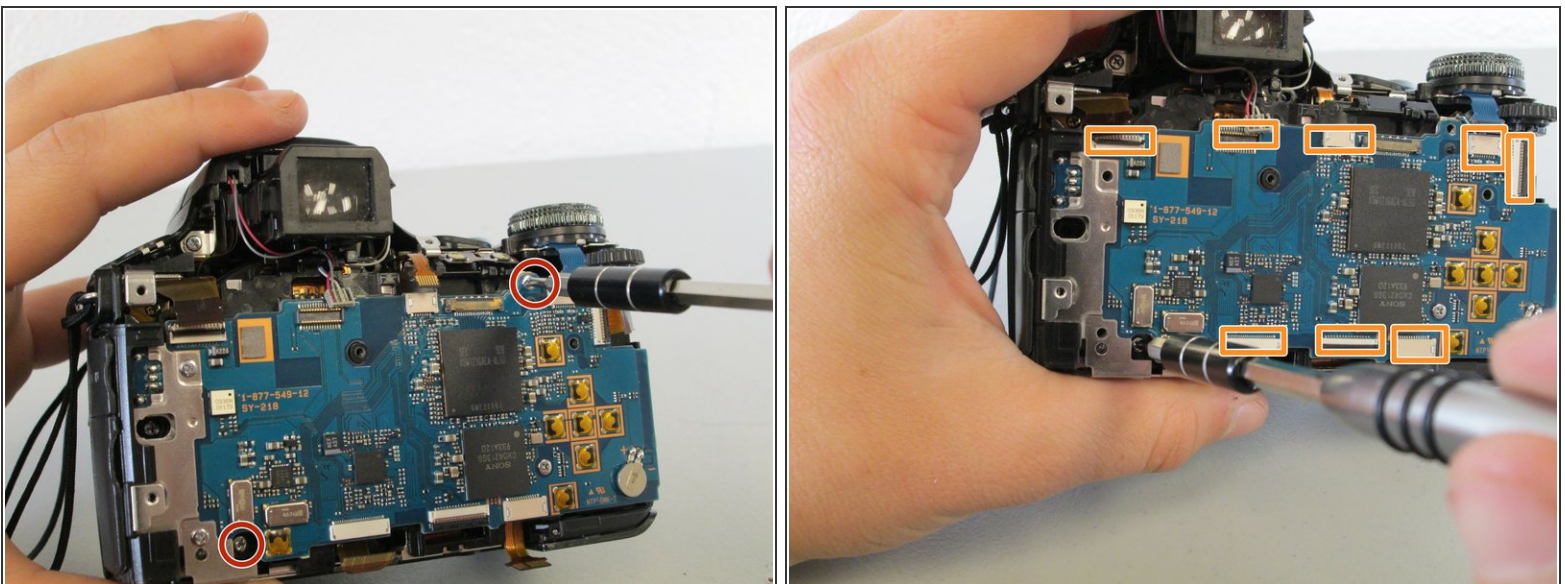
- Lift the back LCD screen to reveal the back of the camera unit.
- Unscrew the three #00 4.0 mm Phillips screws at the edge and center of the back camera unit.

Step 10



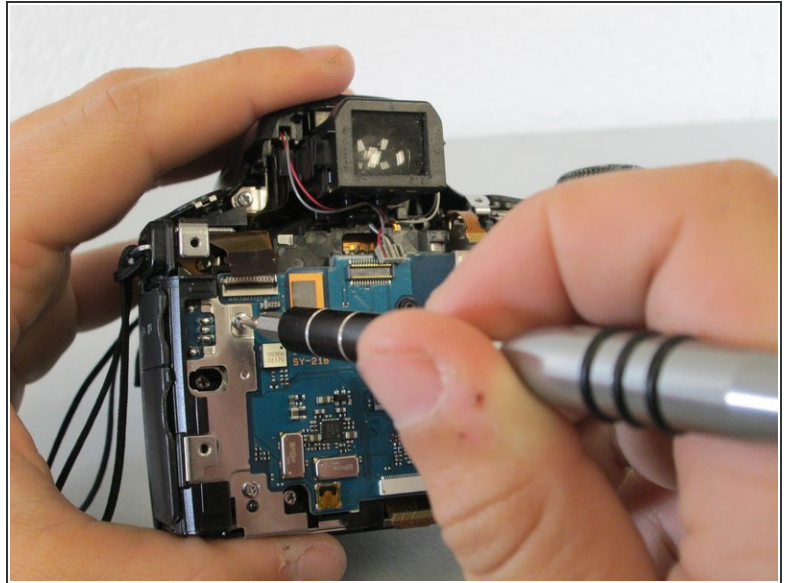
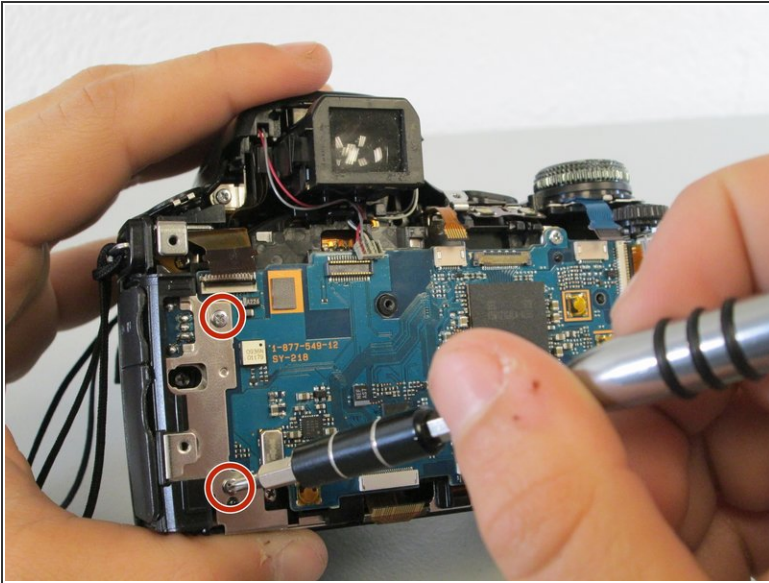
- Using the plastic opening tool, pry apart the bottom of the camera at the line between the four removed screws.
- Place the camera on its lens and use the plastic opening tool to pry at the crack in the case on all four sides of the camera.
- Apply moderate force to the backside of the camera enclosure until the two pieces separate.

Step 11



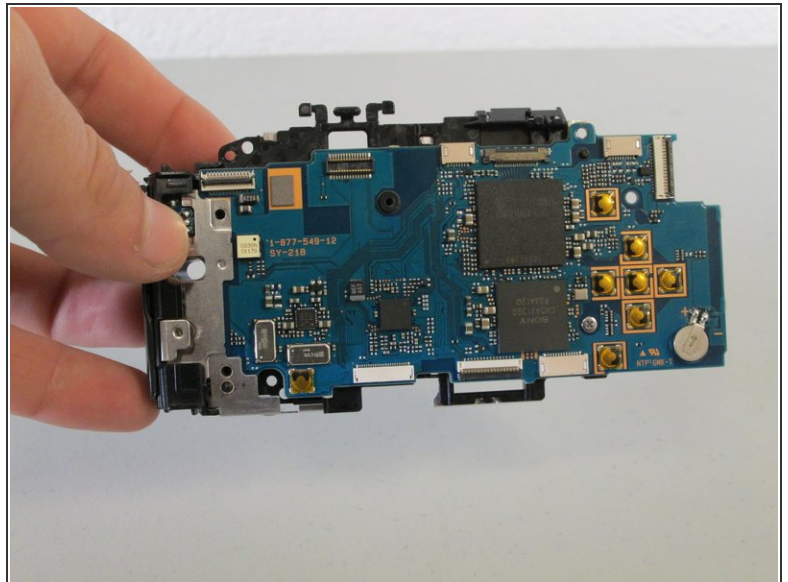
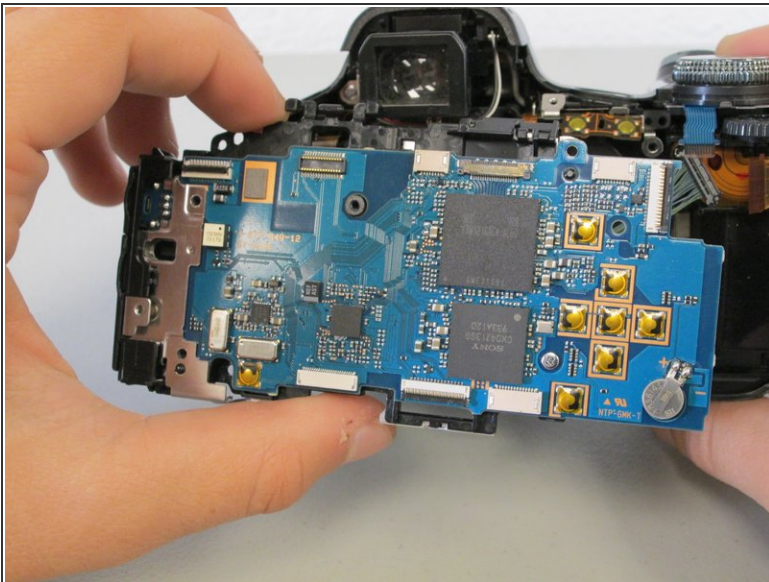
- Remove the #00 4.0 mm Phillips screw and the #00 6.0 mm Phillips screw holding the motherboard to the front enclosure.
- Disconnect the eight ribbon cables from their ports on the motherboard.

Step 12



- Detach the metal bracket from the enclosure by removing the two #00 4.0 mm Phillips screws.

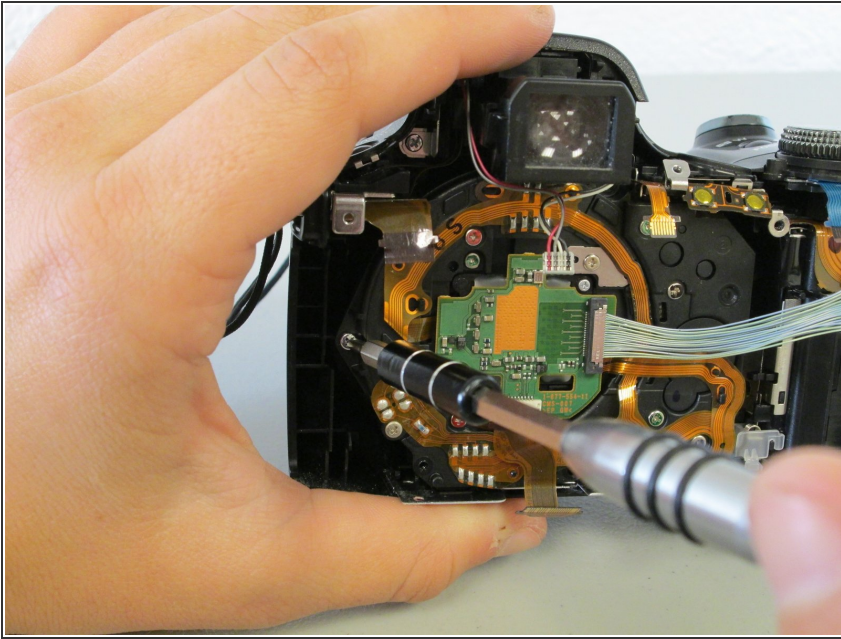
Step 13



⚠ If you feel resistance from the board, double check all screws and cables have been removed to avoid damage.

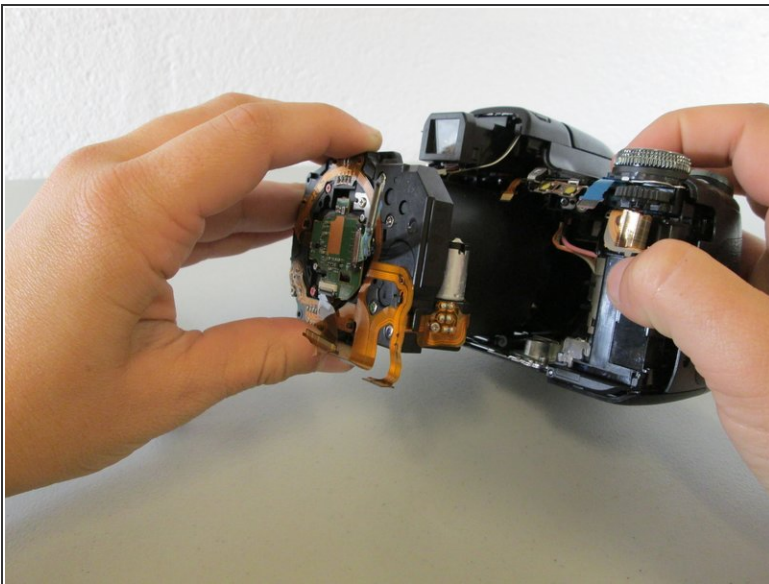
- Completely remove the motherboard by gently pulling the board away from the camera.


Step 14 — Lens Assembly



- Unscrew the #00 6.0 mm Phillips screw on the left side of the lens.

Step 15



 The lens assembly contains exposed leads to capacitors. Be very careful to avoid contact or discharge capacitors before handling as touching the capacitors could lead to electric shock.

- Gently slide the lens assembly out of the front camera housing and remove completely.

To reassemble your device, follow these instructions in reverse order.