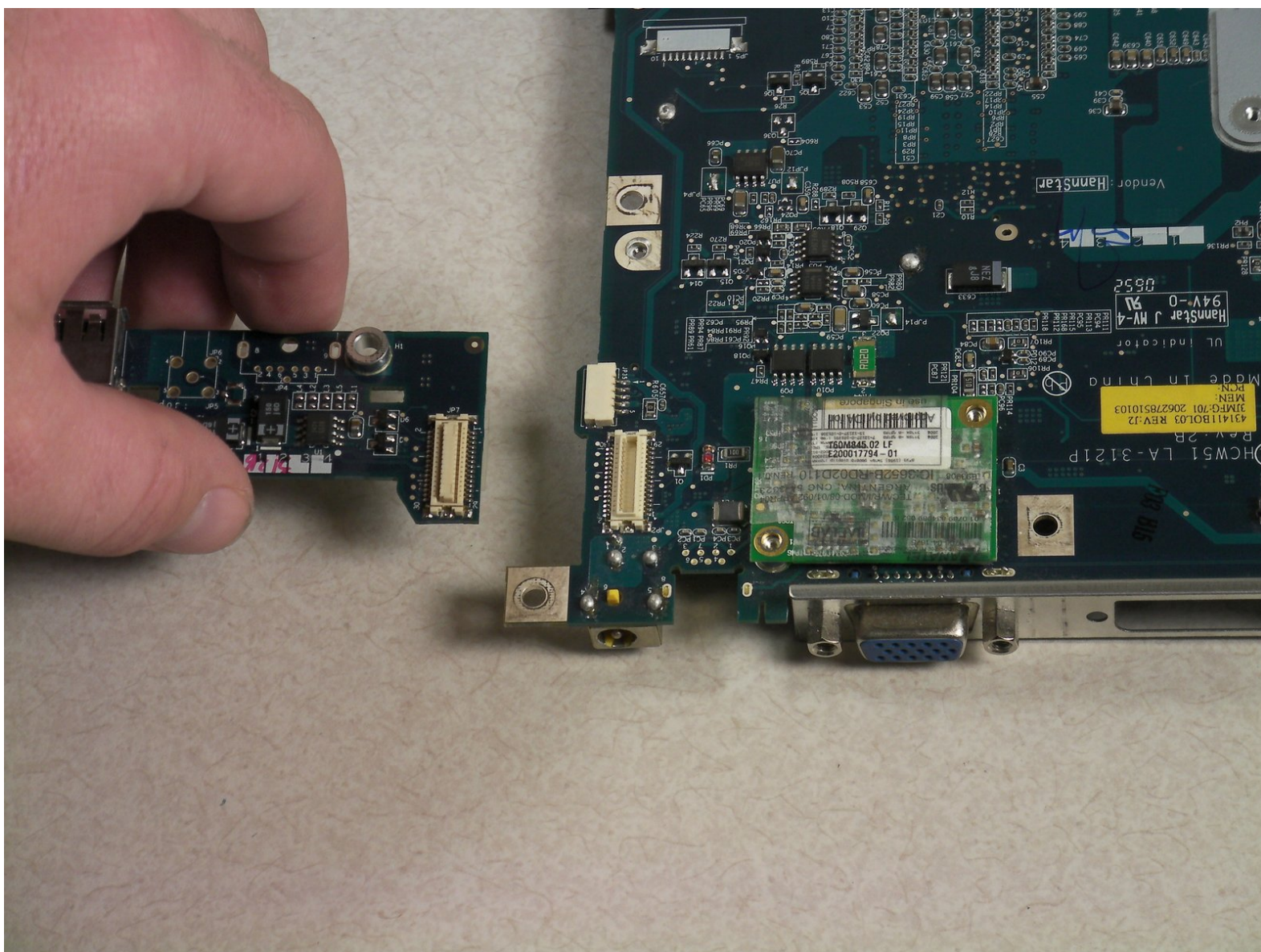




# Acer Aspire 5100 USB Add-on Card Replacement

This guide will lead you through the steps of removing the USB Add-on Card attached on the motherboard.

Written By: michael



## INTRODUCTION

This guide will lead you through the steps of removing the USB Add-on Card attached on the motherboard.



### TOOLS:

- [Phillips #0 Screwdriver](#) (1)
- [Spudger](#) (1)



### PARTS:

- [Acer Aspire 5100 compatible USB card](#) (1)

## Step 1 — Cooling Fan



- Locate and remove the 5 screws that secure the panel over the RAM and CPU cover on the upper right hand side. These can be found in the center towards the corner opposite the battery compartment.

## Step 2



- Lift up and remove the RAM and CPU cover.



## Step 3



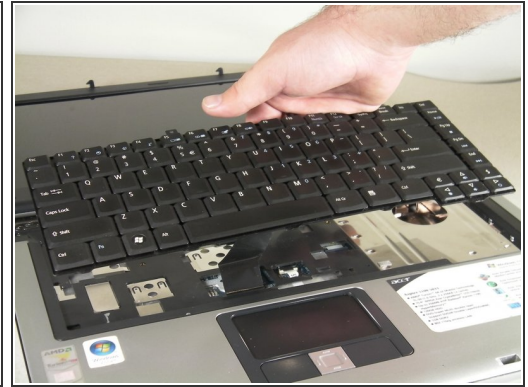
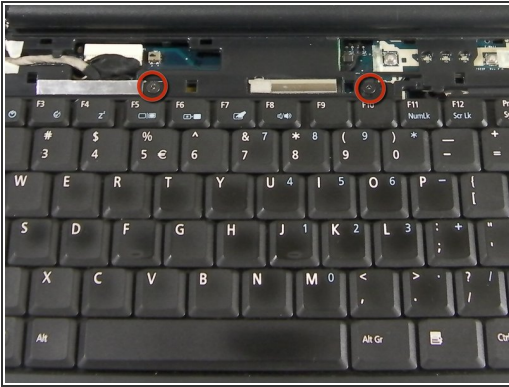
- Remove the two Phillips screws securing the fan.
- Carefully disconnect the fan cable from the motherboard.
- Lift up and remove the fan.

## Step 4 — Keyboard



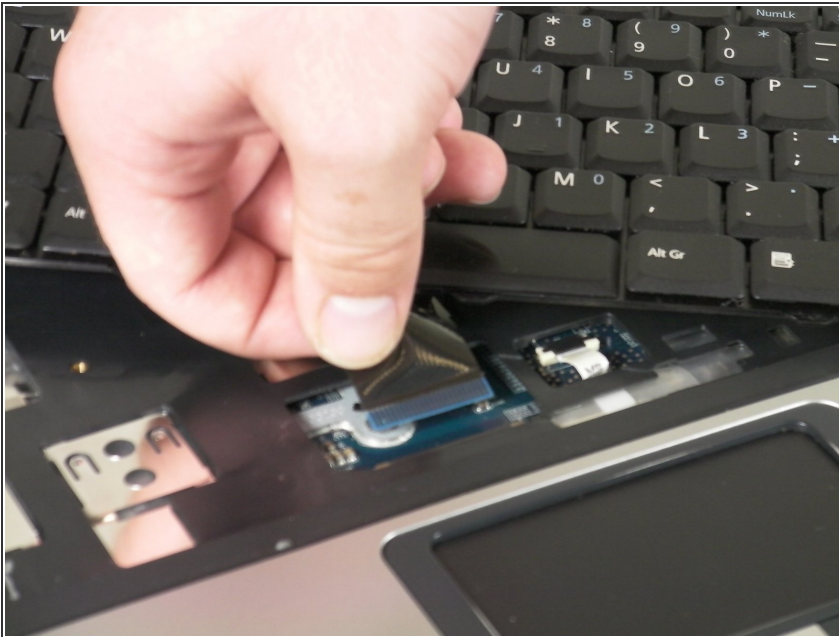
- Open and push the screen back all the way until it is horizontal with the rest of the laptop.
- Use an opening tool to remove the panel above the keyboard that has the power button on it.
- After you have released the tabs, lift up the panel.

## Step 5



- Under the panel, remove the two screws that connect the keyboard to the laptop.
- ⓘ One screw is located above the F5 button, and the other one is located above the F10 button.
- ⚠ Potential for device damage: Lift up the keyboard CAREFULLY because there is a ribbon that connects the keyboard to the motherboard.

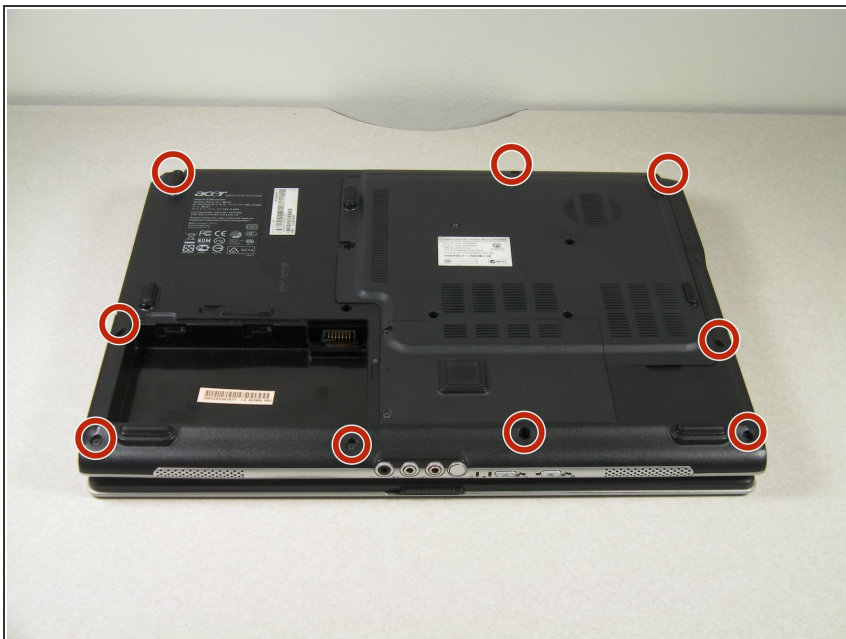
## Step 6



- Release the catch on the ribbon socket by sliding the two tabs toward the ribbon.
- Pull the ribbon under the keyboard to detach it from the motherboard.
- Remove the keyboard.

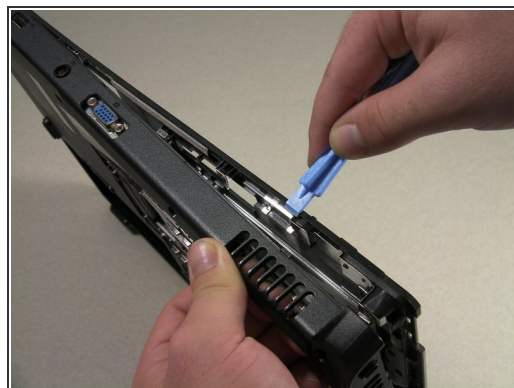


## Step 7 — Track Pad



- Remove the nine screws from the back edges of the laptop.

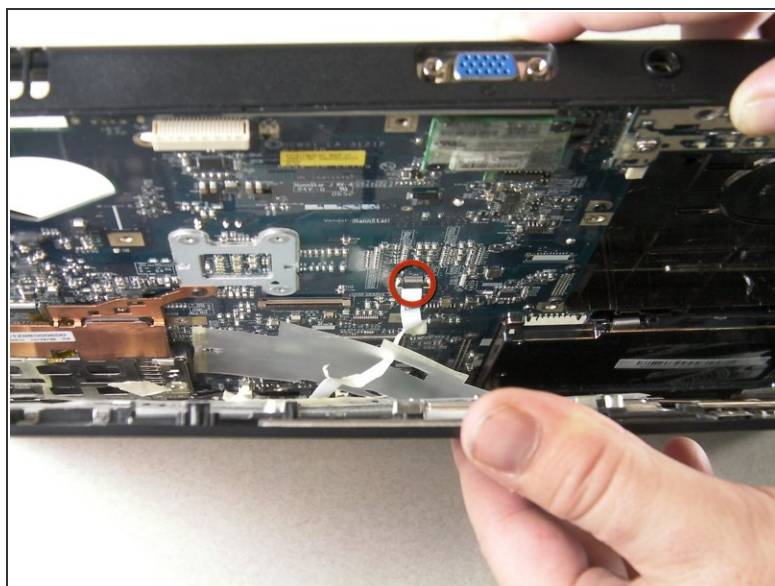
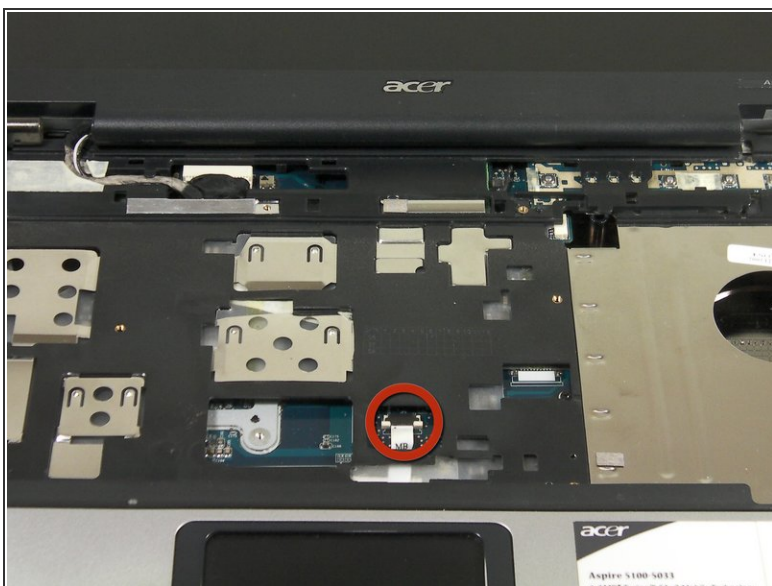
## Step 8



- Open the lid of the laptop and locate the cover that surrounds the keyboard and track pad.
- Use the spudger to pry open the sides of this cover.

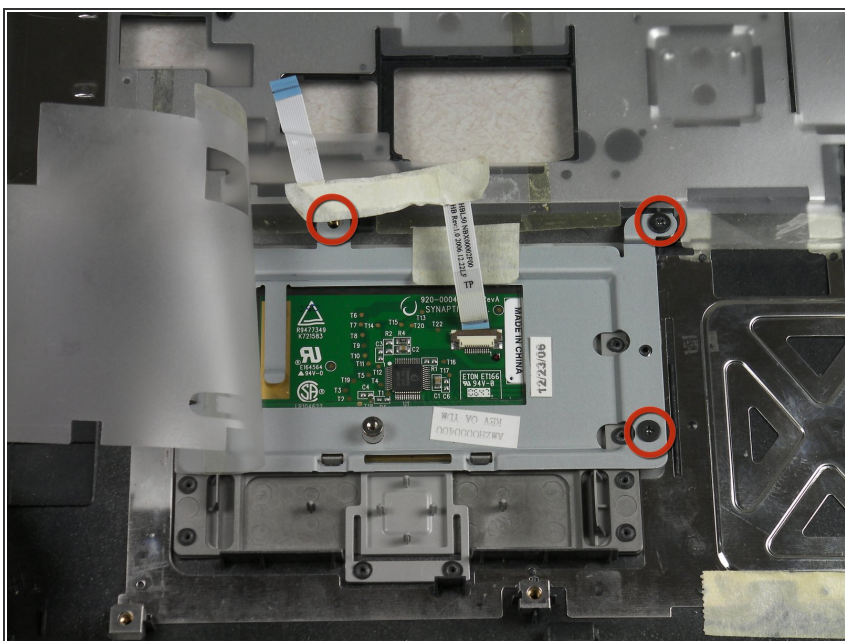
**⚠ DO NOT lift cover off after detaching it because the track pad is connected to the motherboard.**

## Step 9



- Slightly lift up the cover to see the ribbon connection.
- Release the catch by sliding the two lugs toward the ribbon, then pull the ribbon to detach it from the motherboard.
- Lift up the cover from the laptop.

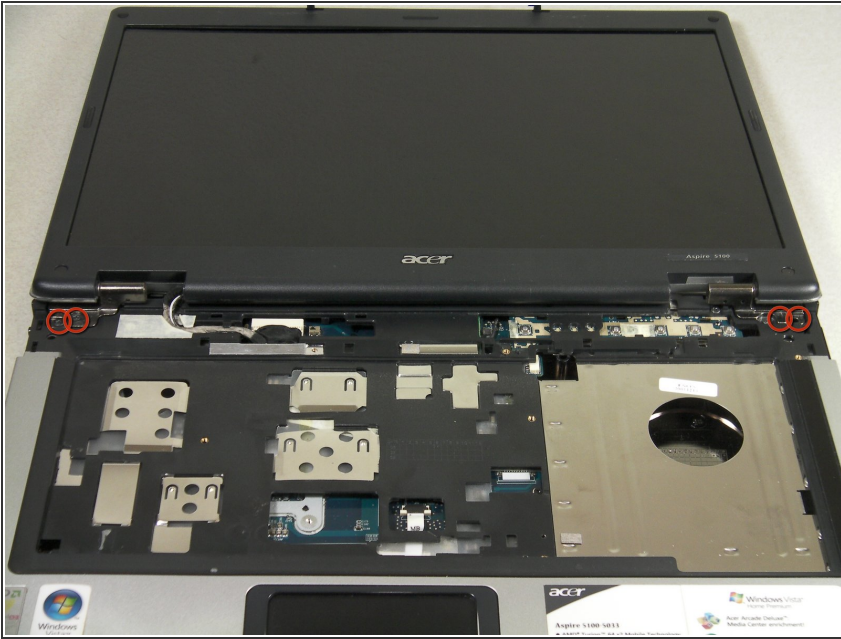
## Step 10



- On the cover that was removed, flip it around and locate where the back of the track pad is.
- Remove the three screws located at the corners.
- Lift up the bracket that you just unscrewed and remove track pad.

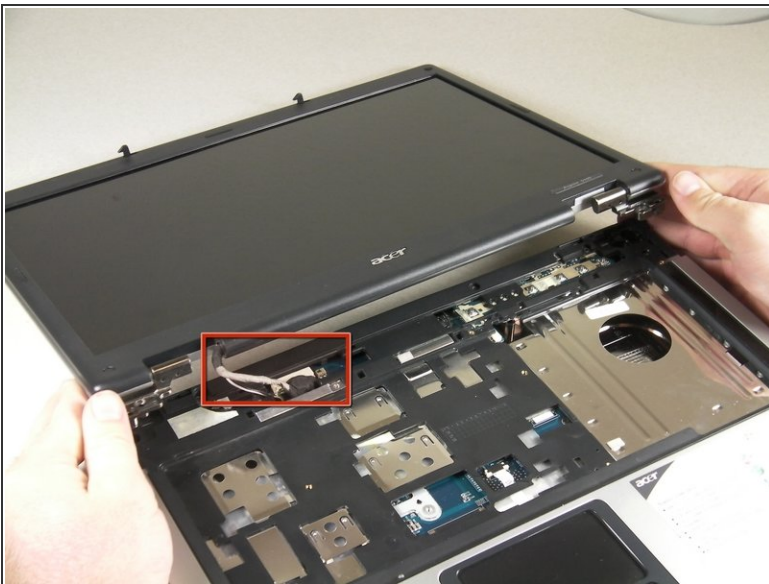


## Step 11 — LCD Monitor



- Remove the two screws from each corner beneath the LCD screen.

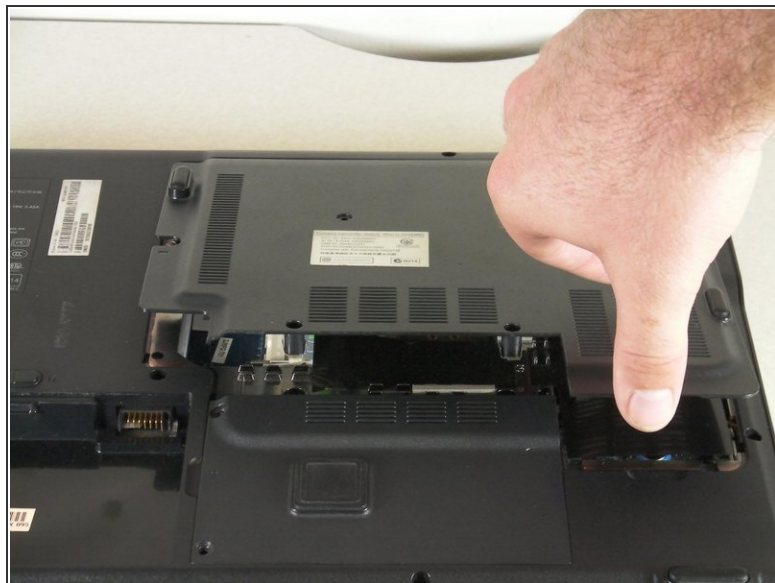
## Step 12



- Detach the white rectangle located on the motherboard at the end of the wire connected to the LCD screen.

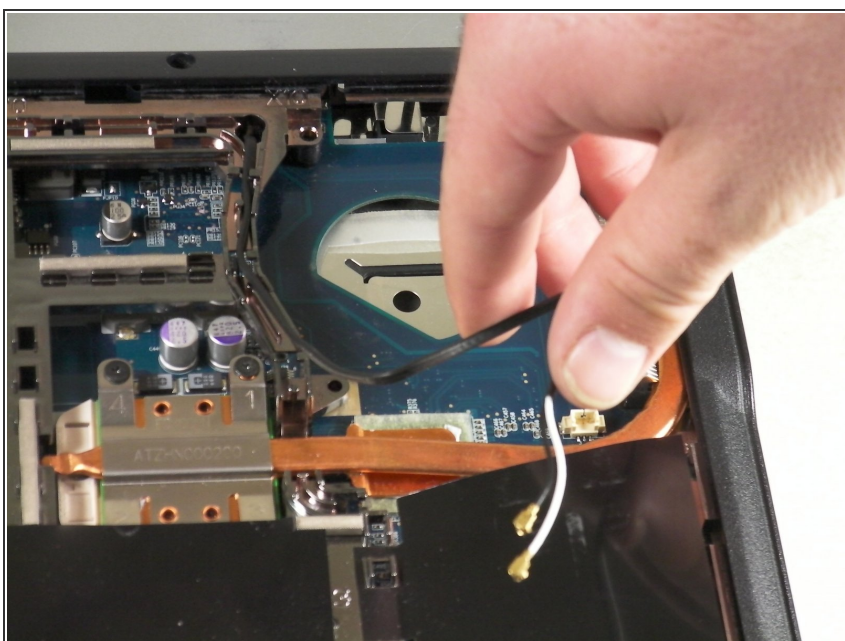


## Step 13



- Flip the laptop upside down.
- Remove the four screws from the back panel of the laptop.
- Lift the panel up and set it aside.

## Step 14



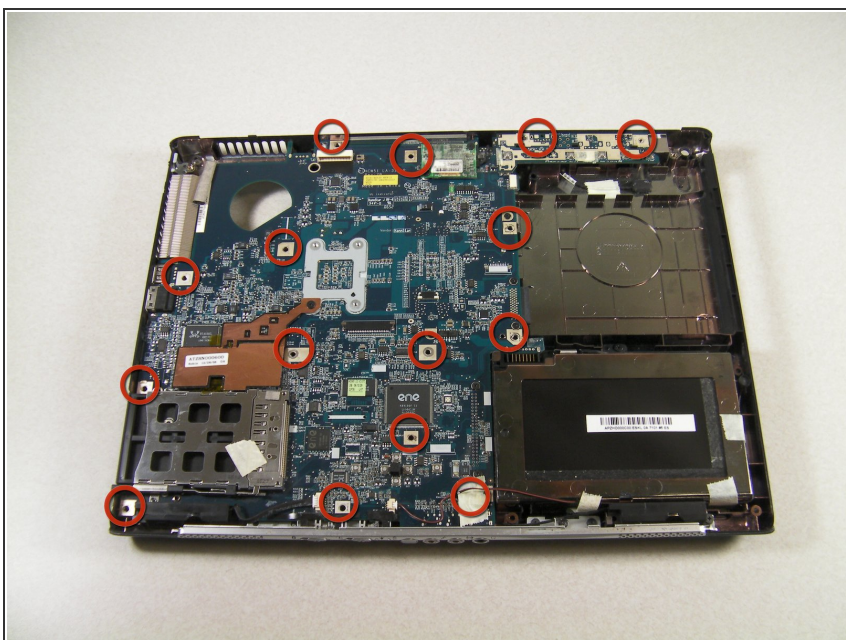
- Detach the black and white wire.
- ⓘ You do not need to remove the cooling fan.

## Step 15



- Lift up the monitor to detach it.

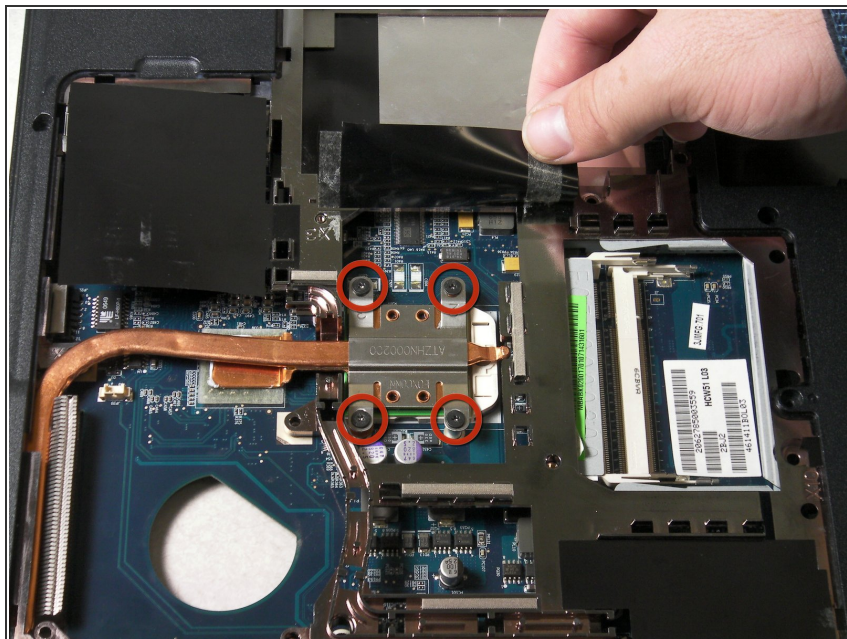
## Step 16 — Motherboard



- Remove the 15 screws from the motherboard.
- ⓘ There is normally only one remaining screw attached to the motherboard on the bottom right beneath the tape.
- ⓘ All the other screw holes (except screws holding the base cover on) are kept empty.

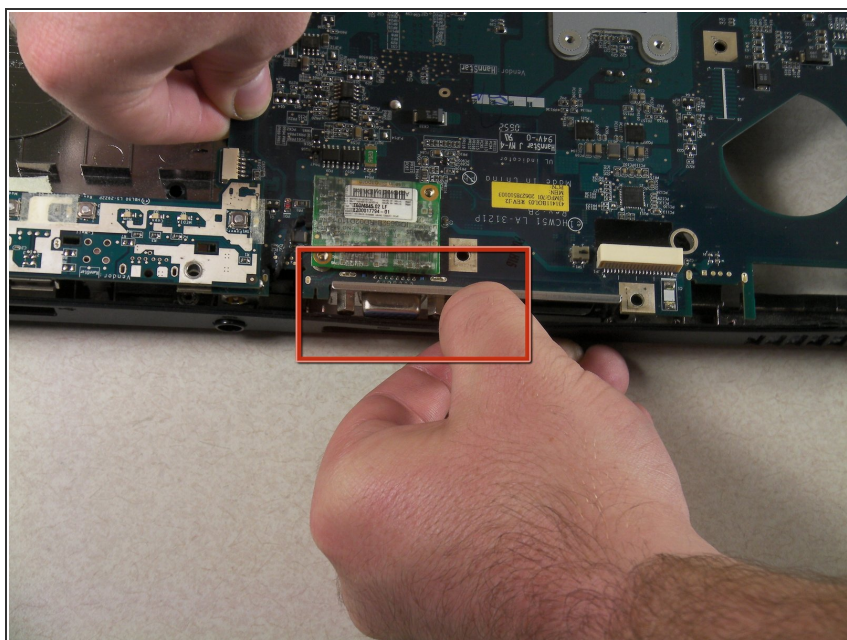


## Step 17



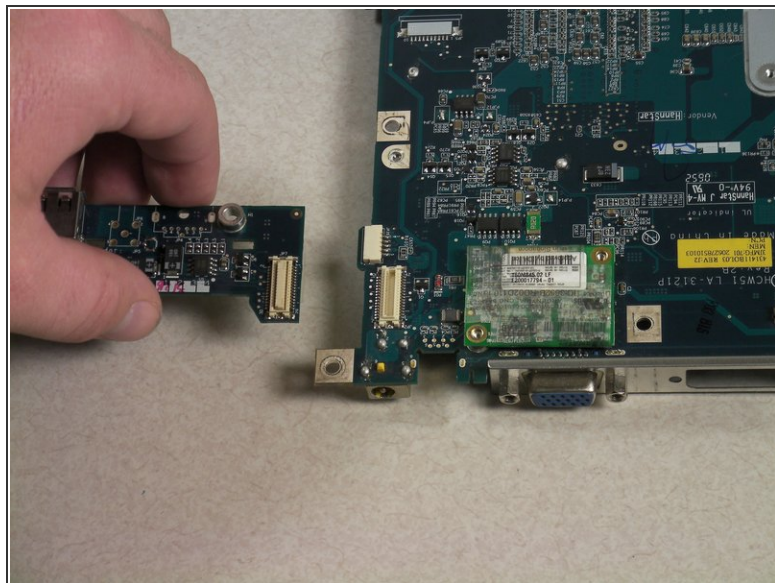
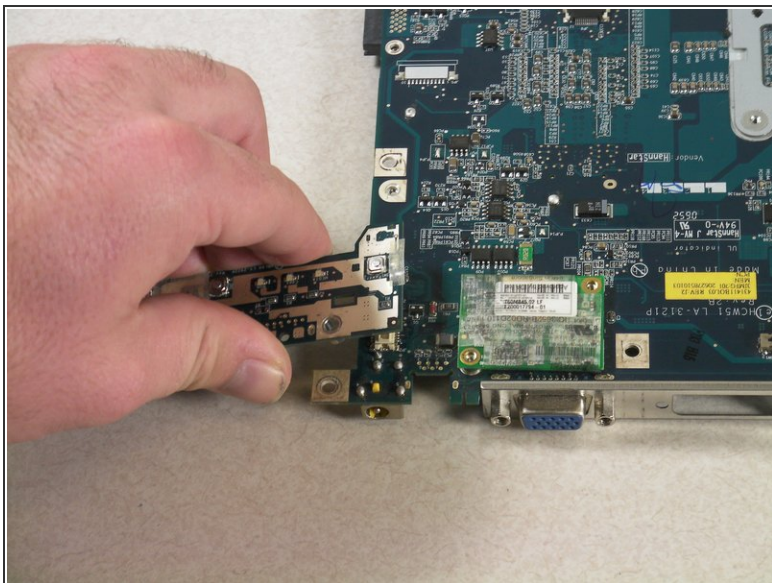
- Flip the laptop upside down.
- Locate the heat sink, which is the copper "L" shaped component, and unscrew the four screws that connect it to the motherboard.

## Step 18



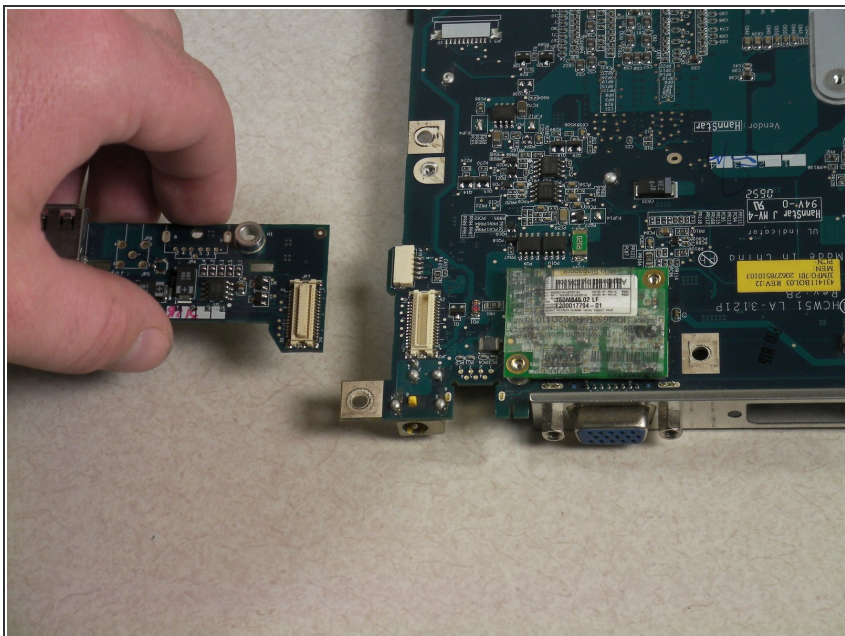
- Push out the back of the casing by the VGA connector to remove the motherboard.

## Step 19



- Lift up and remove the motherboard from the laptop casing.
- Remove the USB add-on card to use it with the new motherboard.
- ❗ To remove, grab on the sides and lift upward.

## Step 20 — USB Add-on Card



- Put in new USB add-on card.



To reassemble your device, follow these instructions in reverse order.