



Samsung Galaxy S6 Volume Buttons Replacement

Replace the volume buttons in your S6.

Written By: Evan Noronha



INTRODUCTION

Use this guide to replace the volume buttons in your Samsung Galaxy S6.

This guide involves removing the rear glass. Removing the rear glass destroys the adhesive holding it in place. Follow [this guide](#) to reinstall the rear glass.



TOOLS:

- [Suction Handle](#) (1)
- [iOpener](#) (1)
- [Phillips #00 Screwdriver](#) (1)
- [Spudger](#) (1)
- [Tweezers](#) (1)
- [iFixit Opening Picks \(Set of 6\)](#) (1)
- [SIM Card Eject Tool](#) (1)



PARTS:

- [Galaxy S6 Volume Button Cable](#) (1)
- [Galaxy S6 Power and Volume Buttons](#) (1)

Step 1 — SIM Card



- Insert a paper clip or SIM eject tool into the hole in the SIM card slot on the power button side of the phone.
- Press to eject the SIM card tray.

 Don't press too hard or you may damage the SIM card tray.

Step 2



- Remove the SIM card tray from the phone.

Step 3 — Rear Glass



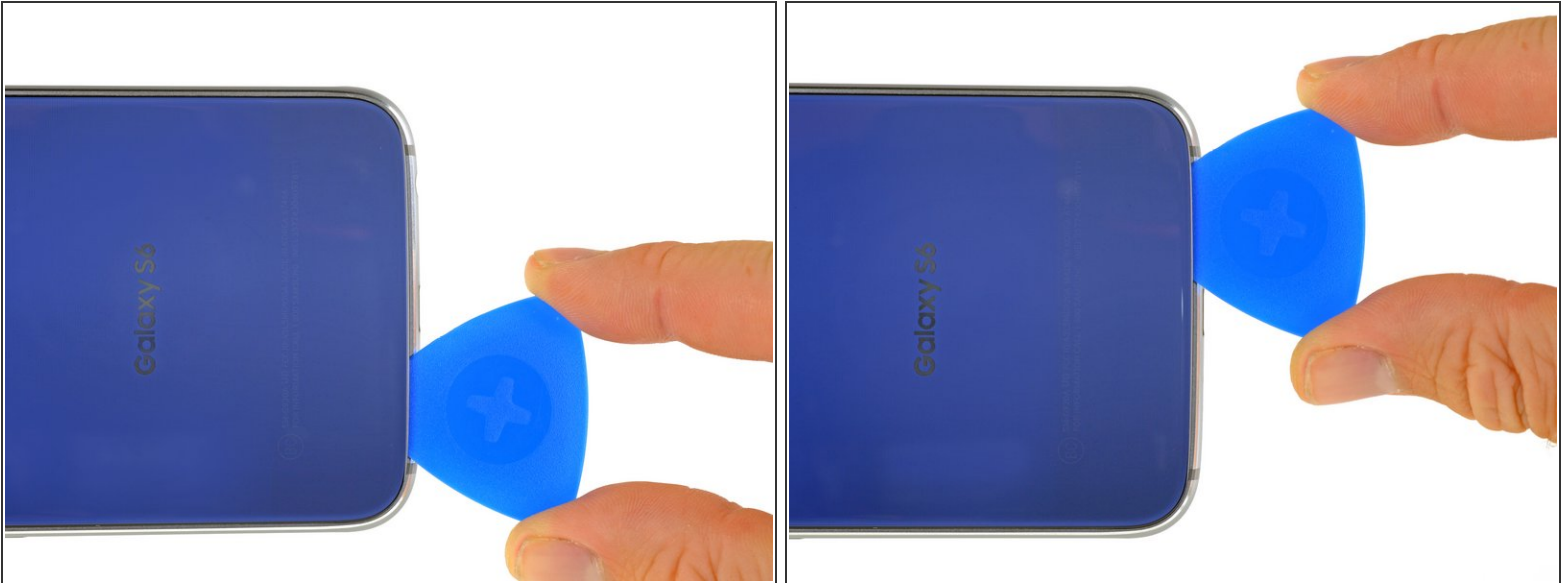
- i** Opening your phone will compromise its waterproof seals. Have replacement adhesive ready before you proceed, or take care to avoid liquid exposure if you reassemble your phone without replacing the adhesive.
 - i** If your glass is shattered, put packing tape over the entire panel to hold it together during the removal process.
 - Lay the heated iOpener over the rear panel for about two minutes to loosen the adhesive around the edge of the glass.
 - i** You may need to reheat and reapply the iOpener several times to get the phone warm enough. Follow the iOpener instructions to avoid overheating.
 - Shift the iOpener to heat the remaining section of the panel for another two minutes.
- ⚠** A hair dryer, heat gun, or hot plate may also be used, but be careful not to overheat the phone—the OLED display and internal battery are both susceptible to heat damage.

Step 4



- Once the rear glass is hot to the touch, apply a suction cup near the bottom edge of the glass.
- Lift on the suction cup to create a small gap underneath the rear glass, and insert an opening pick into the gap.
- ⓘ Optionally, once the pick is inserted, you can add a few drops of isopropyl alcohol into the gap to help weaken the adhesive in the following steps.

Step 5



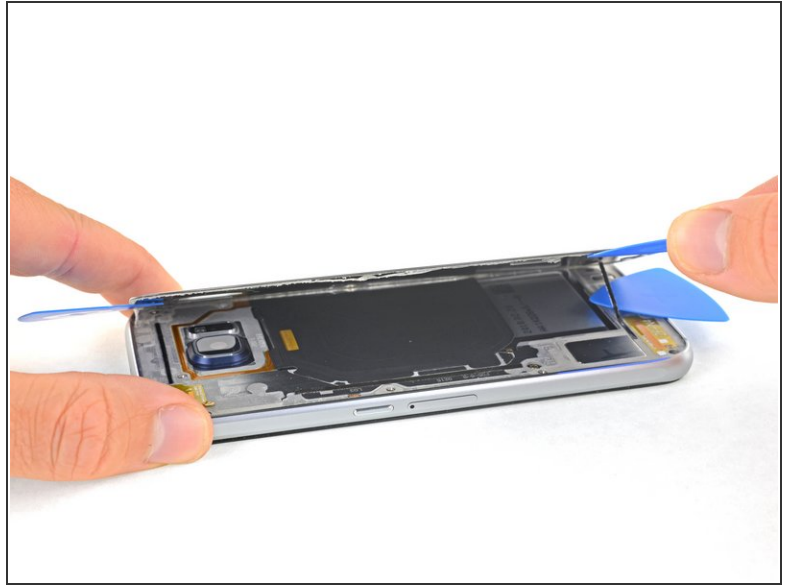
- Slide the pick along the bottom edge of the phone to slice through the adhesive securing the rear glass.
- ⓘ Afterward, it may help to leave the pick in place and grab a second pick as you proceed to the next step. Leaving the pick inserted can help prevent the glue you just separated from re-adhering.
- ⓘ Re-heat the rear glass as needed to prevent the glue from cooling and hardening.

Step 6



- Repeat the heating and cutting procedure for the remaining three sides of the phone.
- Leave an opening pick under each edge to prevent the adhesive from resealing.

Step 7



- Use an opening pick to slice through any remaining adhesive.
- Remove the rear glass.

Step 8



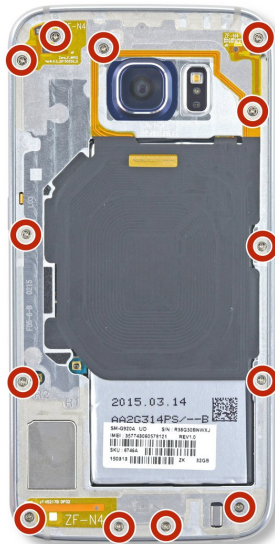
To install new rear glass:

- Use tweezers to peel away any remaining adhesive from the phone's chassis.
- Clean the adhesion areas with high concentration isopropyl alcohol (at least 90%) and a lint-free cloth. Swipe in one direction only, not back and forth. This will help prep the surface for the new adhesive.
- Peel the adhesive backing off of the new rear glass, carefully line up one edge of the glass against the phone chassis, and firmly press the glass onto the phone.



If you're reinstalling the old rear glass, or using rear glass without adhesive pre-installed, follow [this guide](#).

Step 9 — Midframe Assembly



- Remove the thirteen 3.5mm Phillips #00 screws securing the midframe to the phone.

Step 10



⚠ Before you perform this step, make sure you've ejected the SIM card tray.

- Firmly grasp the edge of the midframe assembly.
- Lift up on the midframe assembly while pushing down on the battery to separate the midframe assembly from the rest of the phone.
 - While lifting the midframe, be careful to avoid snagging it on the audio jack or charging port.
- Once the midframe is partially separated, carefully run an opening pick around the edges of the rest of the phone to separate the top of the midframe.

⚠ Be careful not to accidentally insert the opening pick between the glass and display.

- To avoid damage to the headphone jack, remove the top of the midframe first, then push the midframe downwards to disengage it from the headphone jack.
- You may need to [heat](#) and apply an iOpener to the edges of the display to soften the display adhesive if midframe separation is difficult.

Step 11



- Lift the midframe assembly up to separate it from the rest of the phone.

Step 12 — Volume Buttons



- Use the pointed end of the spudger to pry up the volume button contact connectors.

Step 13



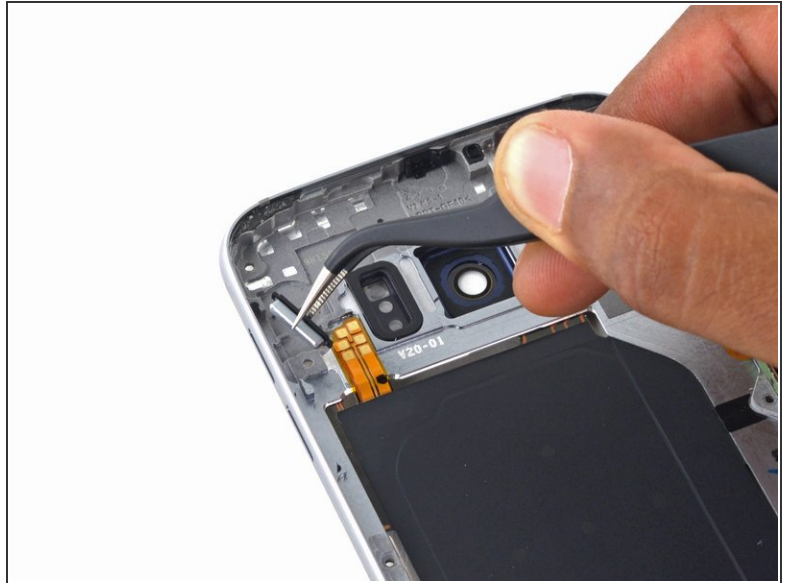
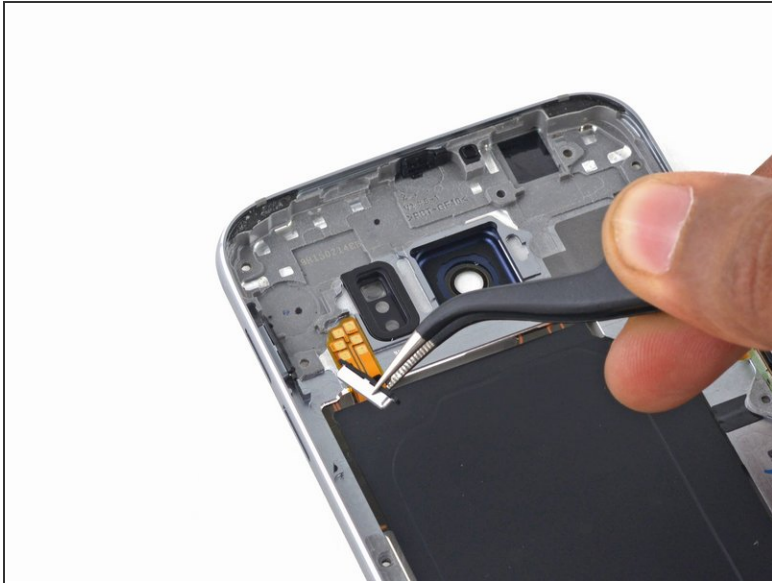
- Use the flat end of the spudger to pry the volume buttons out of the midframe.

Step 14



- Use the pointed end of the spudger to push the button covers out of the midframe.

Step 15



- Use tweezers to remove the button covers.

To reassemble your device, follow these instructions in reverse order. When reinstalling the rear glass, refer to the [rear glass adhesive replacement guide](#).