



MacBook Air 13" Late 2010 Solid-State Drive Replacement

Replace the solid-state drive (SSD) in your MacBook Air 13" Late 2010.

Written By: Andrew Bookholt



INTRODUCTION

Use this guide to upgrade or replace the solid-state drive in a MacBook Air 13" Late 2010. This MacBook Air uses a [proprietary storage drive connector](#), and is therefore **not compatible** with common M.2 drives without the use of an adapter.

Before you perform this repair, if at all possible, [back up your existing SSD](#). Then, either familiarize yourself with [internet recovery](#) or [create a bootable external drive](#) so you'll be ready to install macOS onto your new drive and migrate your data to the new SSD.

Finally, we strongly recommend installing macOS 10.13 High Sierra (or a later macOS) before replacing the original SSD from your MacBook Air. Most new SSDs require updated storage drivers not found in versions of macOS prior to High Sierra.

[video: <http://www.youtube.com/watch?v=DLk1AJIzUEM>]



TOOLS:

- [P5 Pentalobe Screwdriver Retina MacBook Pro and Air](#) (1)
- [T5 Torx Screwdriver](#) (1)



PARTS:

- [Macbook Air 11" and 13" \(Late 2010/Mid 2011\) SSD](#) (1)
- [OWC Aura Pro SSD for Macbook Air 11" and 13" \(Late 2010-Mid 2011\)](#) (1)

Step 1 — Lower Case



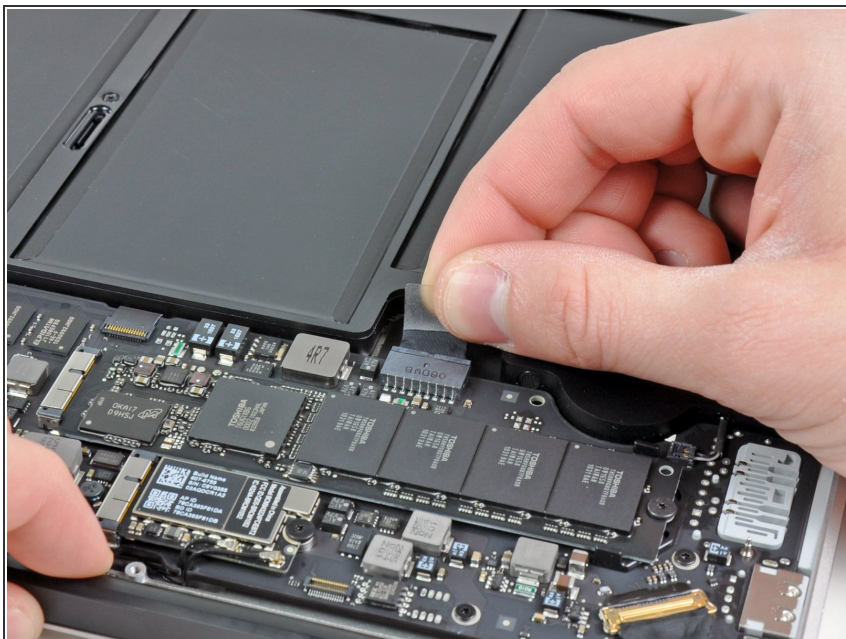
- i Before proceeding, power off the device, close the lid and lay it on a soft surface top-side down.
- Remove the following ten screws:
 - Two 9 mm 5-point Pentalobe screws
 - Eight 2.6 mm 5-point Pentalobe screws
- i The special screwdriver needed to remove the eight 5-point Pentalobe screws can be found [here](#).


Step 2




- Wedge your fingers between the display and the lower case and pull upward to pop the lower case off the Air.
- Remove the lower case and set it aside.

Step 3 — Battery

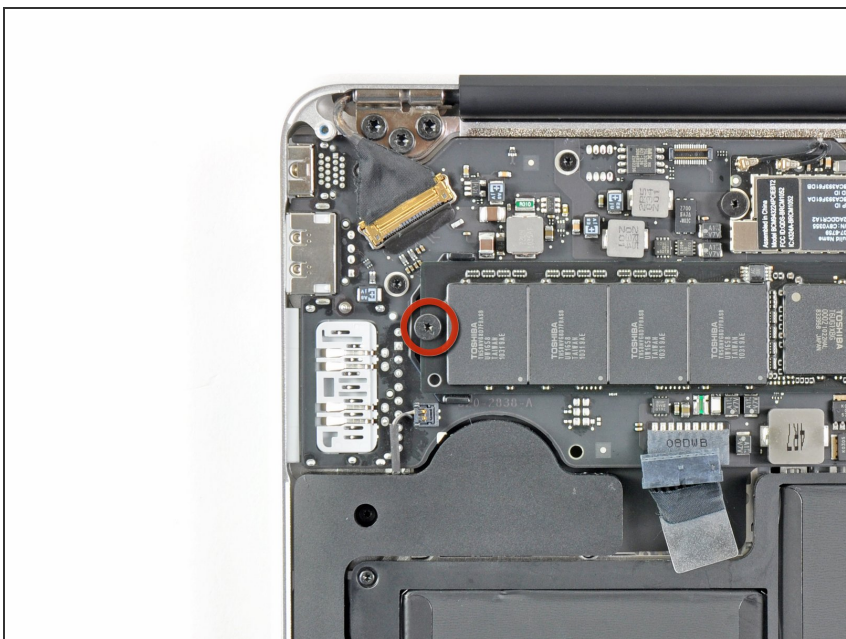


 For precautionary purposes, we advise that you disconnect the battery connector from the logic board to avoid any electrical discharge. This step is **optional** and is not required.

- Grab the clear plastic pull tab attached to the battery connector and pull it toward the front edge of the Air to disconnect the battery from the logic board.

 Do not lift upward on the connector as you disconnect it.

Step 4 — Solid-State Drive



- Remove the single 2.9 mm T5 Torx screw securing the SSD to the logic board.

Step 5



- ⚠ Do not lift the end of the SSD excessively.
- Slightly lift up the end of the SSD and pull it straight out of its socket on the logic board.
- ★ When reinstalling the SSD, be sure it is properly seated before reinstalling its retaining screw.

To reassemble your device, follow these instructions in reverse order.