



# Canon PowerShot S230 Camera Casing Replacement

This guide will show you how to remove the...

Written By: Tanya Malalang



# INTRODUCTION

This guide will show you how to remove the front and back casing of the camera.

## TOOLS:

Phillips #00 Screwdriver (1)

### Step 1 — Battery



- On the bottom of the camera, use your thumb to press the rubber battery cover towards the side of the camera with the strap base. The cover will shift to extend beyond the rest of the camera.

## Step 2



- Hold the end of the battery cover that extends beyond the camera and lift it up.

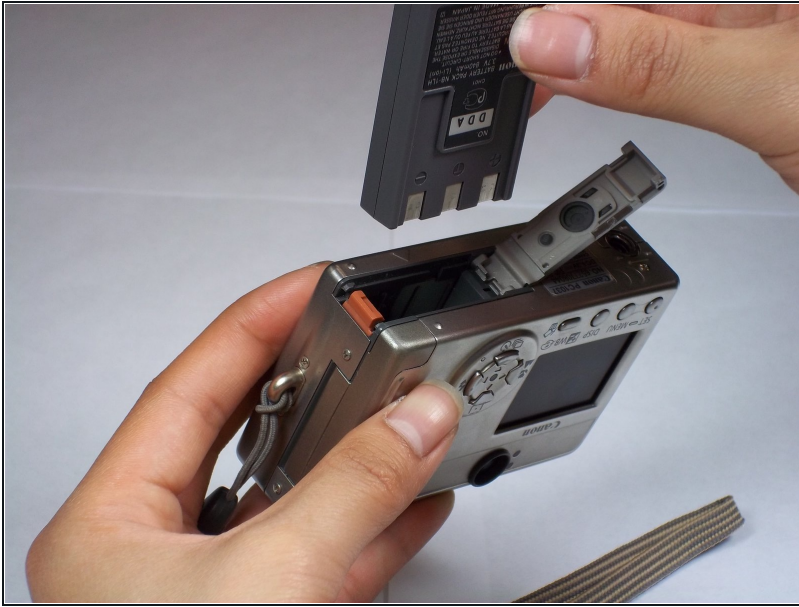
## Step 3



- Locate the orange tab next to the battery. Next roll the tab back in order for the battery to come out.



## Step 4



- Pull the battery out.

## Step 5 — Memory Card



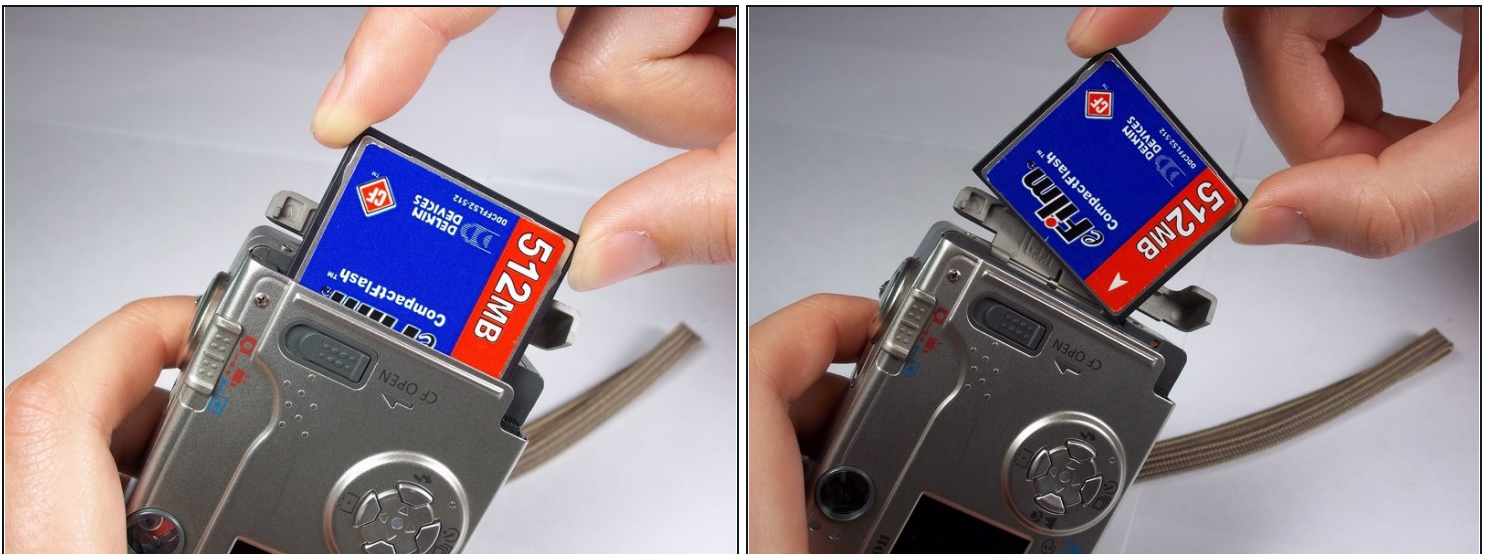
- Locate the sliding button labeled "CF open" on the back of the camera.
- Press and slide down the button labeled "CF open". The memory card cover will pop open.

## Step 6



- Push down on the black square button next to the memory card slot. This will release the memory card from the slot.

## Step 7



- Pull the memory card out of the memory card slot.

## Step 8 — Camera Casing



- Remove two 2.4mm Phillips screws from the right side of the camera.

## Step 9



- Remove two 2.4mm Phillips screws above the label on the bottom of the camera.
- Remove two 2.8mm Phillips screws next to the tripod hole.



## Step 10



- Remove the two 3.2mm Phillips screws that are closer to the top and bottom edges of the camera.
- Remove the two 3.8mm Phillips screws on either side of the strap base.

## Step 11



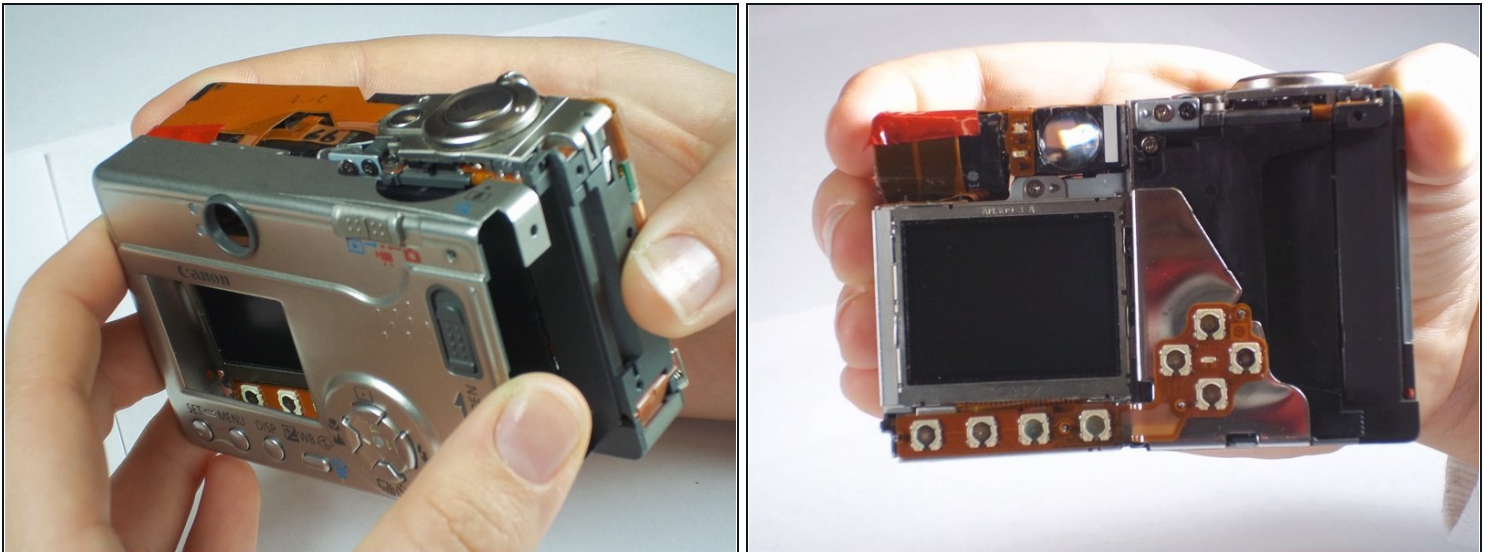
- Remove one 1.6mm Phillips screw from the above the CF open button on back of the camera.

## Step 12



- Gently pull the front casing from the camera.
- ① The following items will either fall off or will be loose: the strap base, the gray rubber cover labeled "Digital A/V Out", and the black rubber piece over the view finder.
- Remove the memory card cover by sliding down the CF open button and moving the pin.

## Step 13



- Gently pull the back casing from the camera.

To reassemble your device, follow these instructions in reverse order.