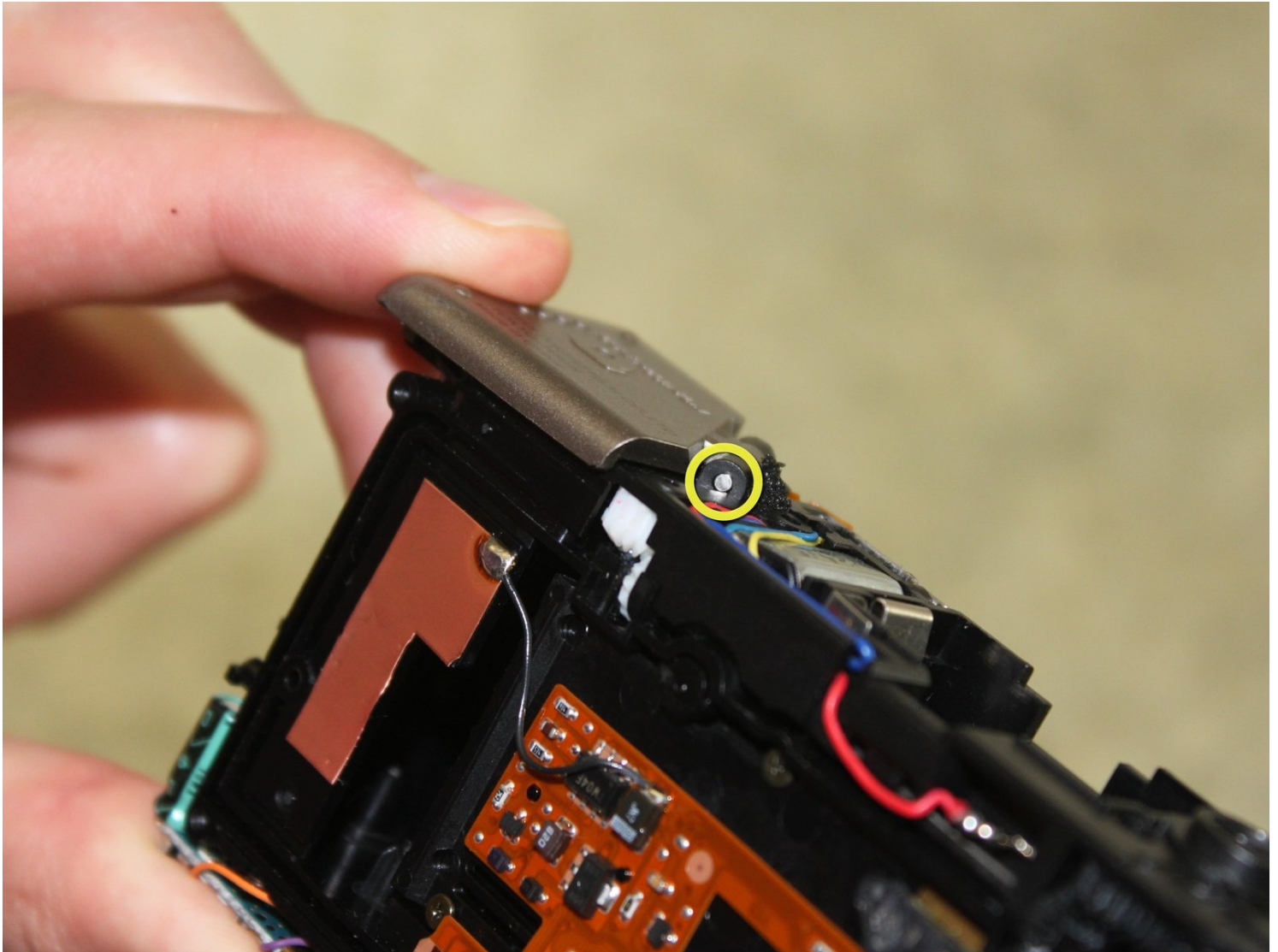




# Fujifilm Endeavor 100ix Film Door Replacement

Written By: Eric Nicolai



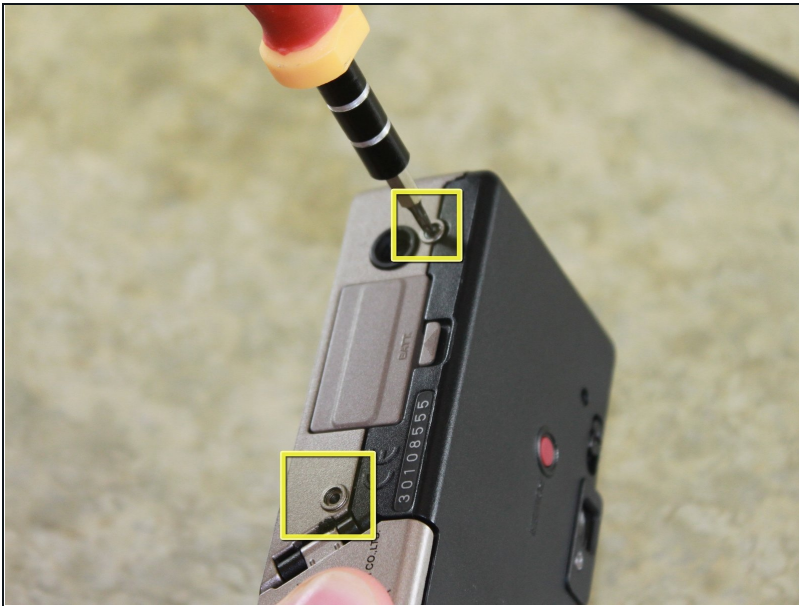
## TOOLS:

Tweezers (1)

Phillips #00 Screwdriver (1)

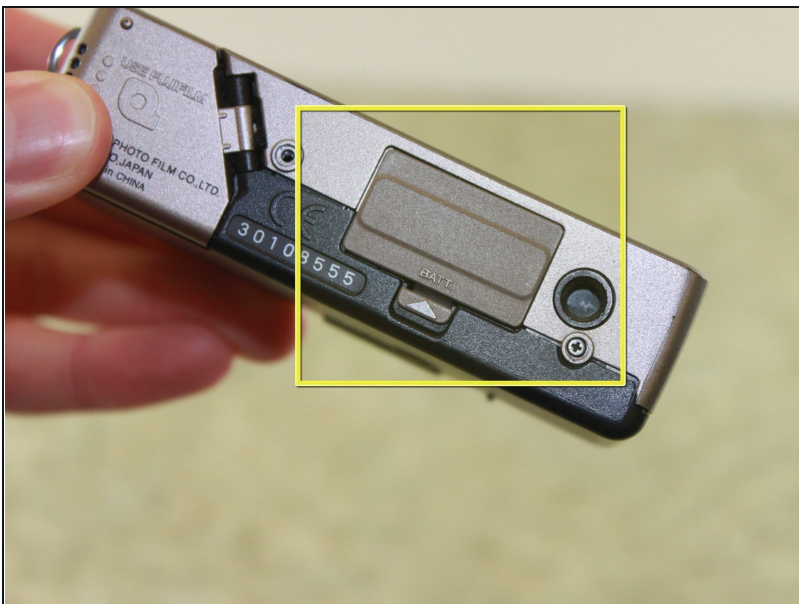
Spudger (1)

### Step 1 — Outer Casing



- Locate and remove two 6.4mm screws on the bottom of the camera with a Phillips #00 screwdriver.

### Step 2



- Locate the battery door.

### Step 3



- Locate the latch on the battery door marked by the word "BATT." Use your finger to pry it open.

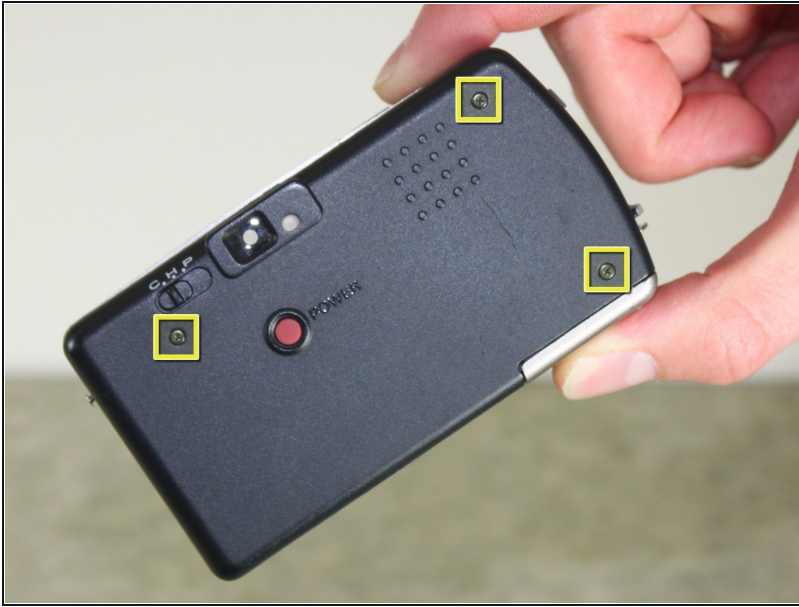
### Step 4



- Remove the battery from the camera by pulling the battery door outwards.

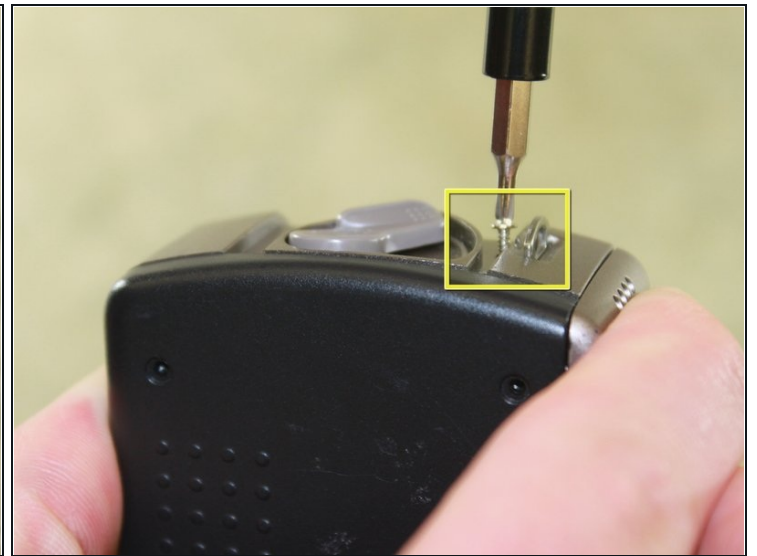


## Step 5



- Locate and remove three black 3.80mm screws on the back of the camera with the Phillips #00 screwdriver.

## Step 6



- Locate and remove the 6.4mm screws located on either side of the camera with a Phillips #00 screwdriver.

## Step 7



- Locate the film door latch located on the side of the camera.
- Insert the spudger under the latch.

**⚠ Caution:** Be careful during the following step in order to not break any parts within the camera. Prying the latch in any other direction than perpendicular may result in broken parts.

- Pry the latch upward, applying force perpendicular to the camera.

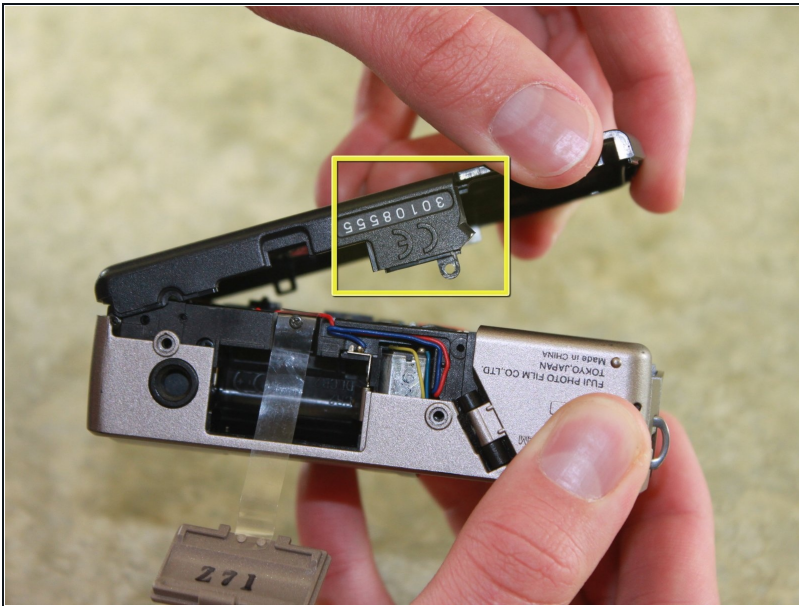
## Step 8



- Insert the flat edge of the spudger between the gold front casing and the black back casing.
- Pry the spudger upward until the black back casing snaps out and is dislodged on that edge of the camera.

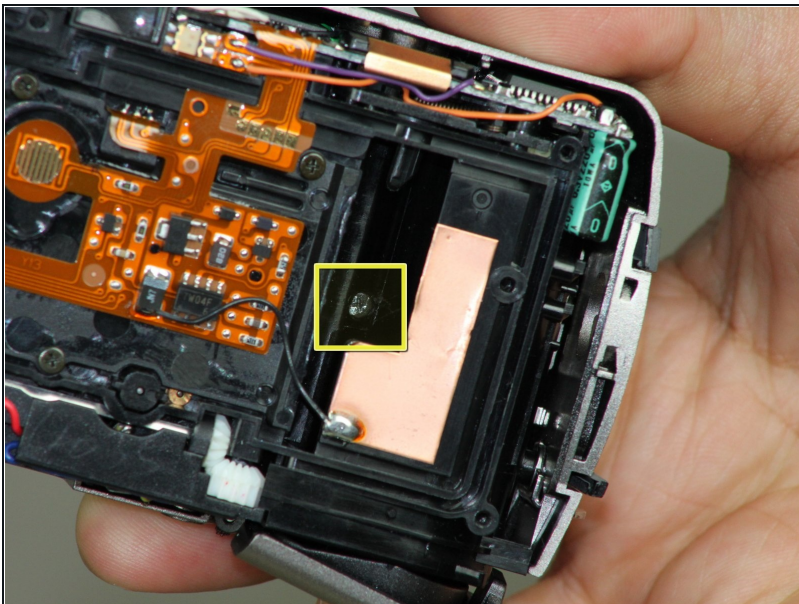


## Step 9



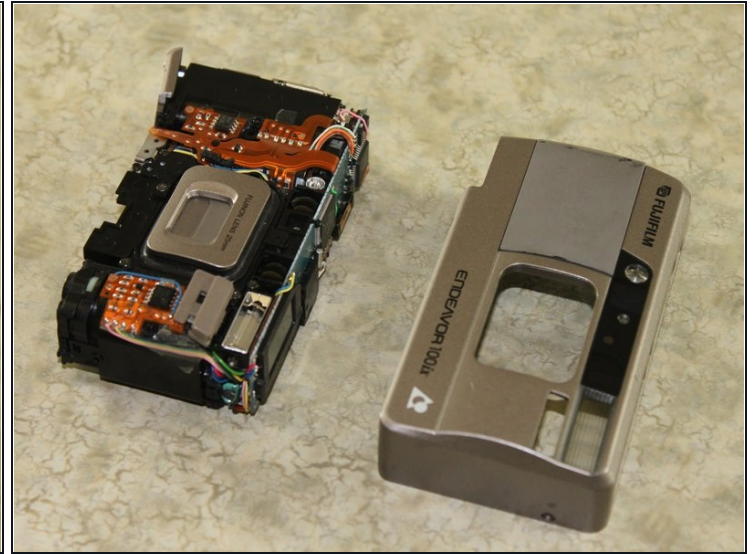
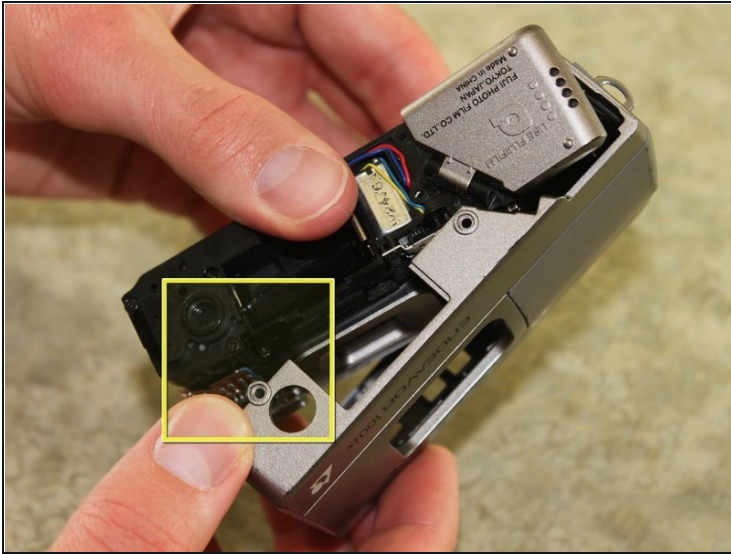
- Squeeze the camera by placing a thumb on the tab marked CE.
- Pull the back half of the camera firmly away from the camera body.

## Step 10



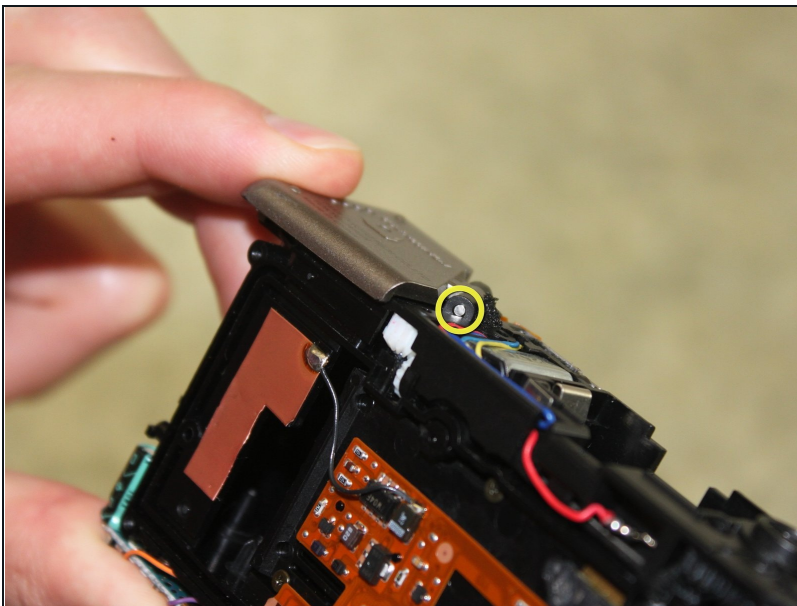
- Locate and remove the 3.80mm screw inside the film compartment with the Phillips #00 screwdriver.

## Step 11



- Pull the front cover off of the camera by lifting the tripod tab over the tripod hole.

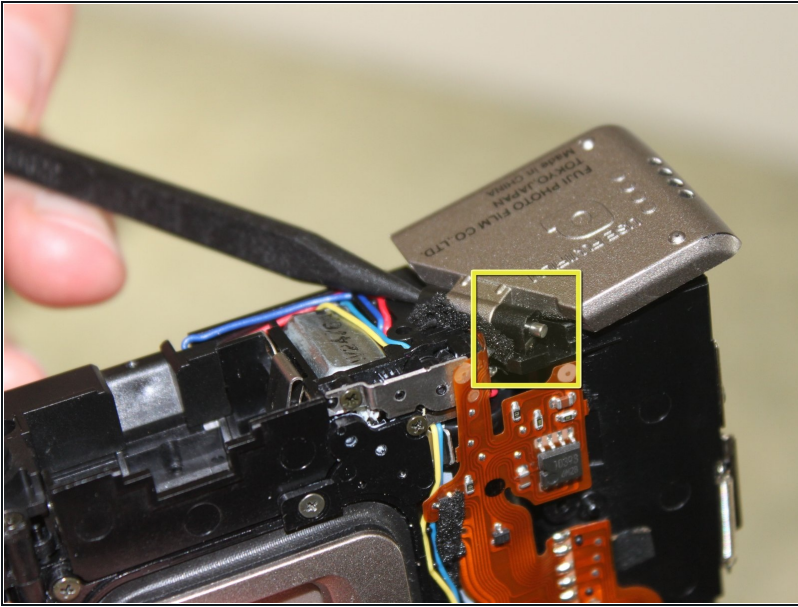
## Step 12 — Film Door



- Locate the film door on the bottom of the camera.
- Locate the pin that connects the film door to the camera

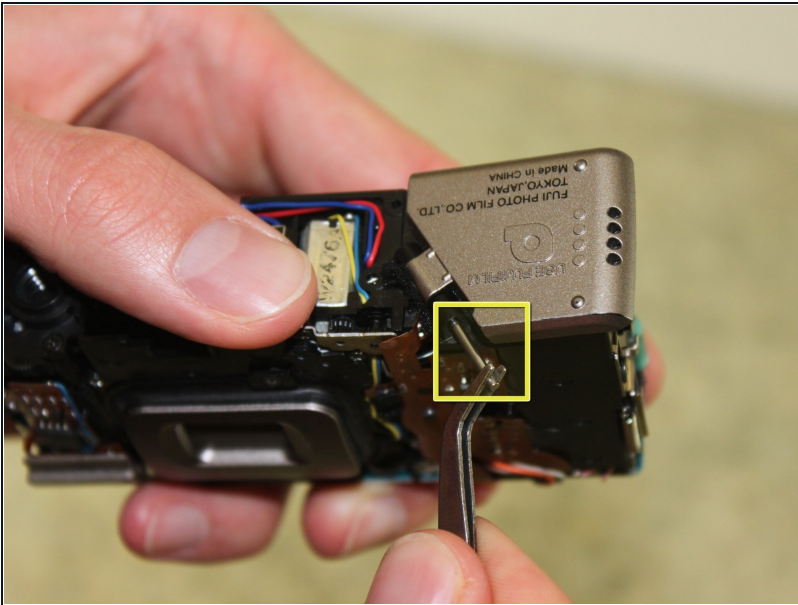


## Step 13



- Push the pin from one side with the spudger until it comes out on the opposite side.

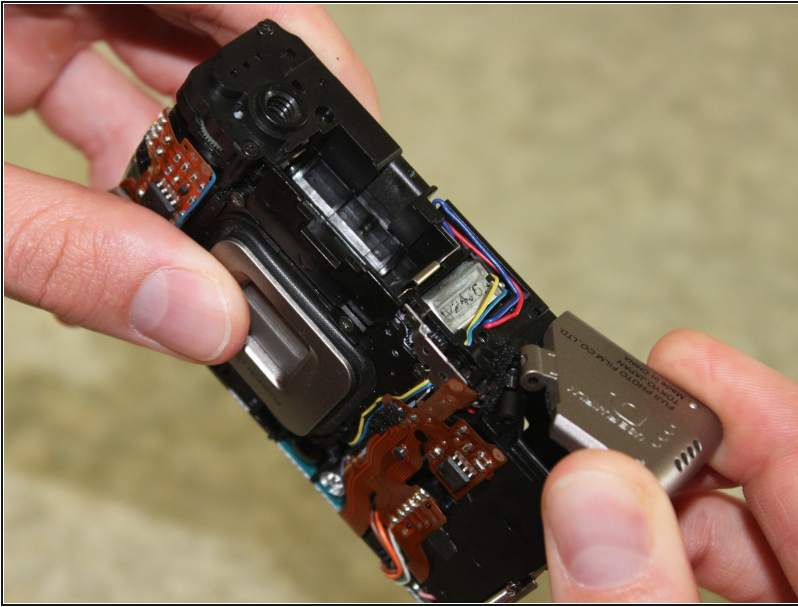
## Step 14



- Grab the pin with the [tweezers](#) and gently pull it out.
- The film door should feel loose.



## Step 15



- Remove the door with your fingers and discard it.
- Insert the replacement film door appropriately to fit where the broken door was located.

---

To reassemble your device, follow the instructions from the "Disassembling Fujifilm Endeavor 100ix Outer Casing" guide in reverse order.