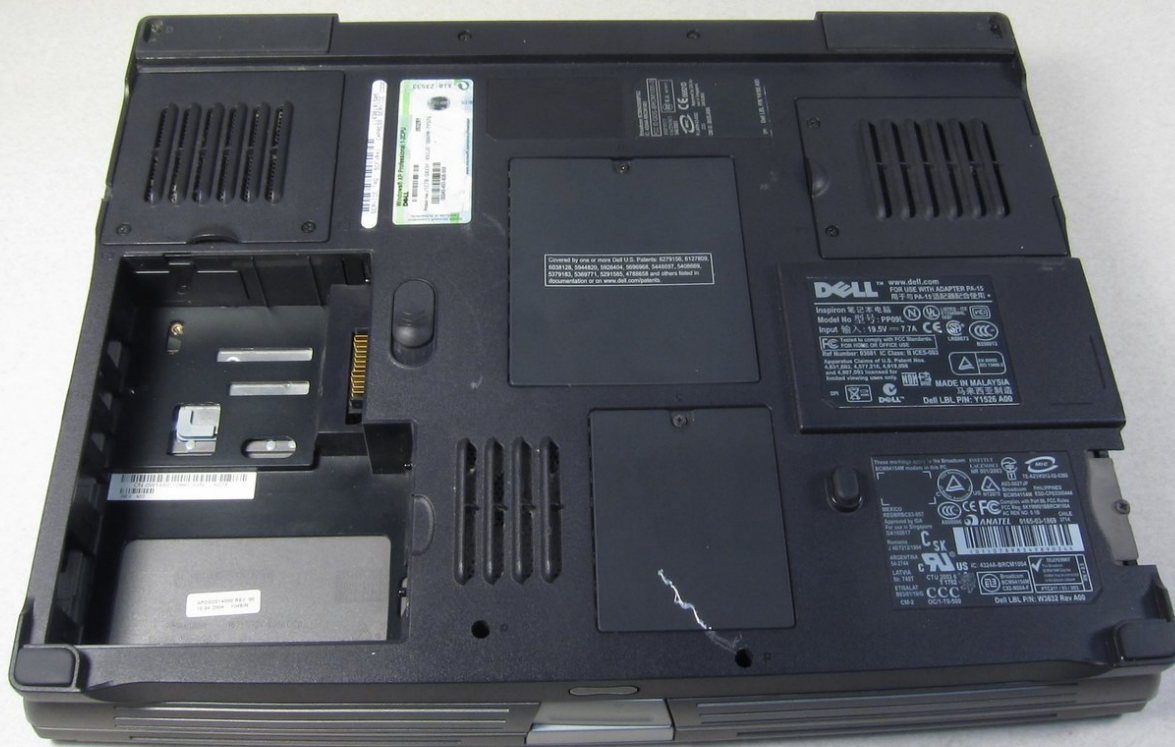




Dell Inspiron 9100 Mini-PCI (WiFi) Card Replacement

Removal of Mini-PCI (WiFi) Card.

Written By: charlierefvem



INTRODUCTION

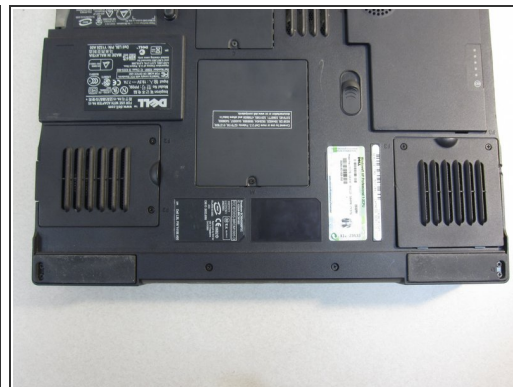
This guide requires a Phillips #00 screwdriver



TOOLS:

- [Phillips #00 Screwdriver](#) (1)
-

Step 1 — Battery



- Unplug the laptop from the power adapter and turn the power off.

⚠ Failure to unplug laptop before proceeding could result in risk of electric shock!

Step 2



- Slide the battery-lock tab and hold.
- Flip the battery away from the chassis to remove it.

Step 3 — Mini-PCI (WiFi) Card



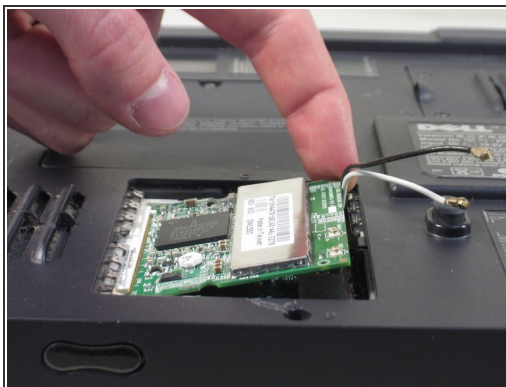
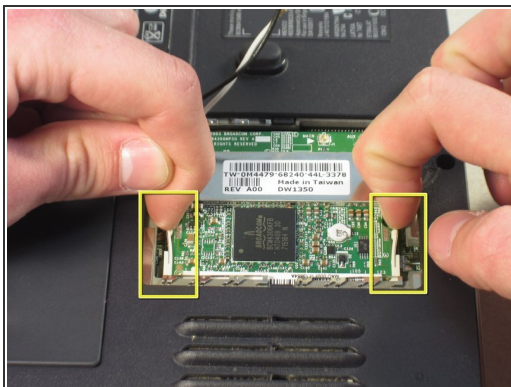
- Undo the screw on the Mini-PCI card cover labeled "C"
- ⓘ This screw will remain within the panel
- Remove the panel from the chassis.

Step 4



- Disconnect the antenna cables from the Mini-PCI card.

Step 5



- Use your fingertips to carefully spread apart the white plastic tabs.
 - Flip the Mini-PCI card up at a 45 degree angle.
 - Remove the card from the computer by sliding out diagonally
- i** Ground yourself while dealing with the card. Static shock can cause damage to the card. Store the card in anti-static bag when not in use.

To reassemble your device, follow these instructions in reverse order.