



Samsung P241 Front Panel Replacement

This guide will show you how to remove the front panel of the DVD player to make further repairs.

Written By: Sarah Wachtfogel



INTRODUCTION

Make sure you look at the [Samsung P241 Troubleshooting Guide](#) first to see if you can solve your problem without taking the DVD player apart.




TOOLS:

- [Phillips #1 Screwdriver](#) (1)
-

Step 1 — Top Case



 You will need to be near a power source for this guide.

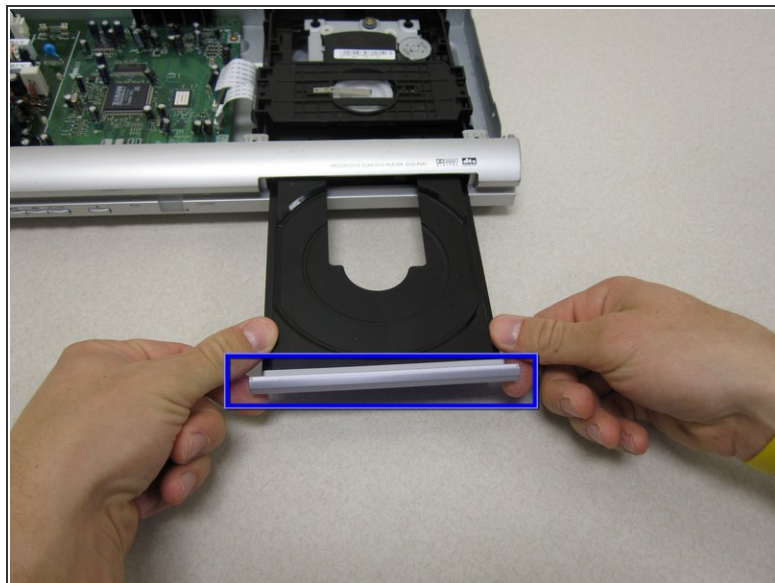
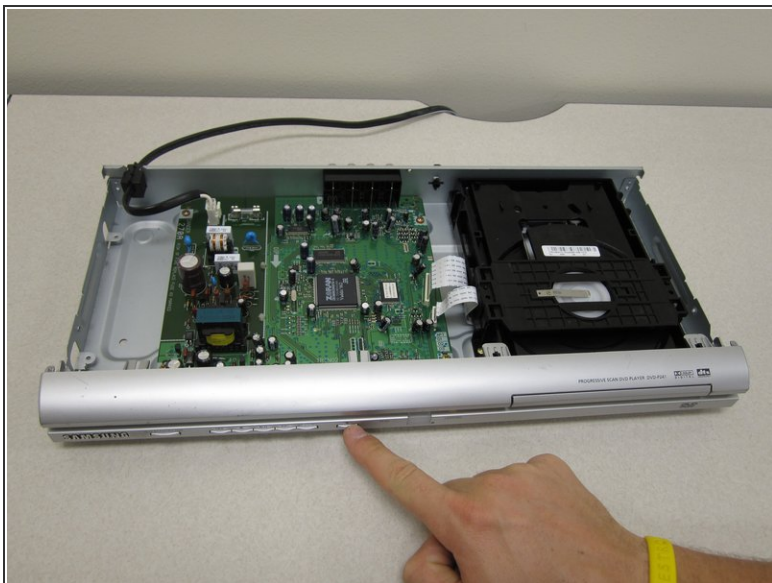
- With the back of the DVD player facing you, remove the three 1 cm black screws on the right, left, and top sides using a Phillips #1 screwdriver.

Step 2



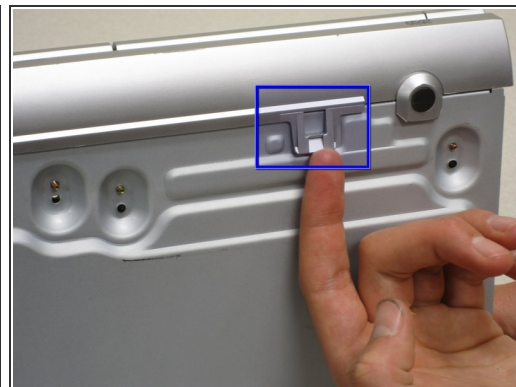
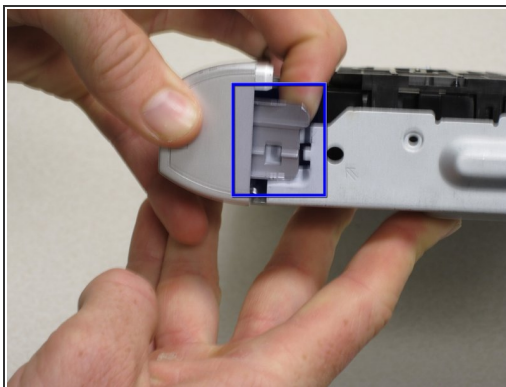
- Pull the top cover towards you until you can lift it up and off.

Step 3 — Front Panel



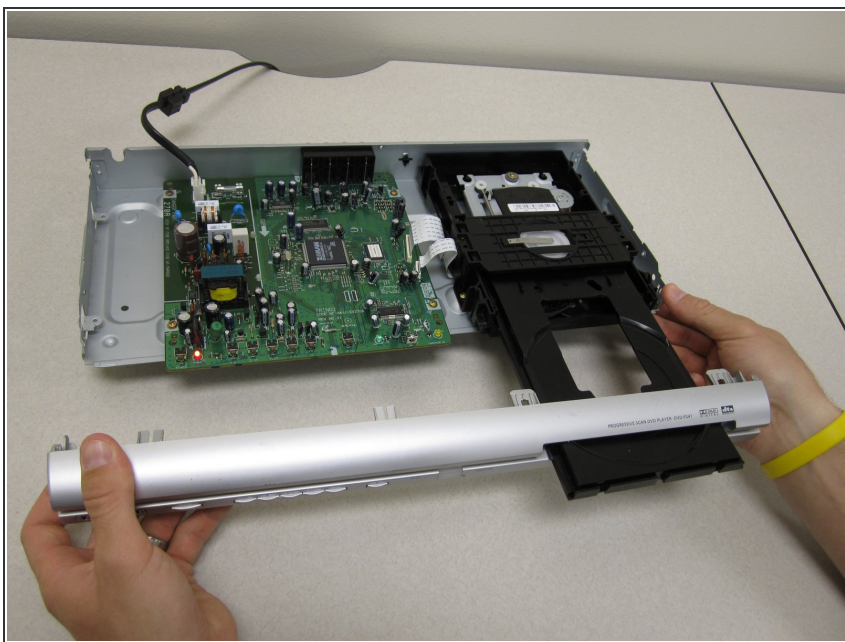
- With the front of the DVD player facing you, turn the power on and eject the disc tray.
 - Press down on the disc tray with your thumbs while also pressing up with your pointer finger on the left and right edges of the silver cover. The cover should easily pop up and off the disc tray.
- ⚠ Be careful not to crack or bend the disc tray by pulling too hard.

Step 4



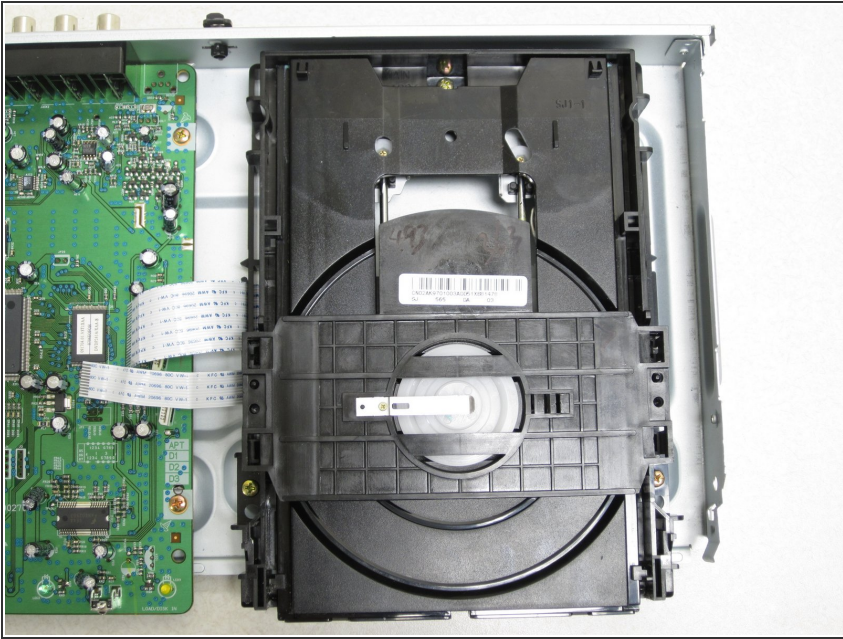
- To remove the front panel, lift up the clips on the bottom, left and right sides of the DVD player.
- ⓘ Be sure to have all clips lifted up at the same time otherwise it will be difficult to get the panel off.
- ⓘ If you are having trouble removing the panel, try wedging an object underneath the two clips on the bottom to keep them from falling back into place.

Step 5



- Gently remove the front panel by pulling it forward.

Step 6



- Press the eject button again to make the disc tray slide back into place.
- ⚠ Turn off the DVD player and unplug it from the wall before proceeding to further steps.

To reassemble your device, follow these instructions in reverse order.