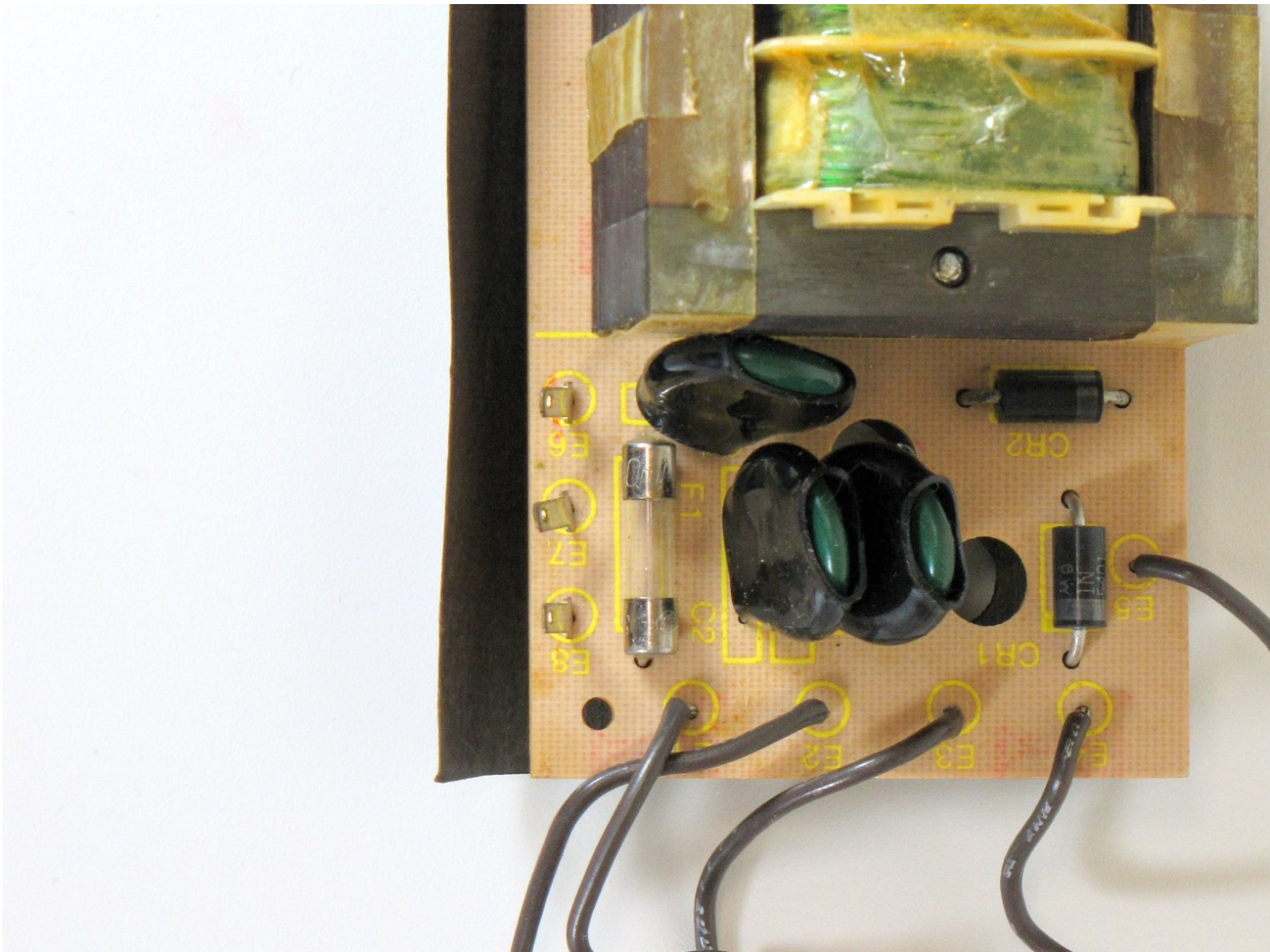




# TRS-80 Color Computer Fuse Replacement

Replace a broken fuse on the TRS-80 Color Computer's power supply.

Written By: Christopher Paige



---

# INTRODUCTION

Replace a broken fuse on the TRS-80 Color Computer's power supply.

---



## TOOLS:

- [Desoldering Braid](#) (1)
  - [Phillips #0 Screwdriver](#) (1)
  - [Soldering Iron](#) (1)
-

## Step 1 — Outside Casing



- Flip the computer over.
- Remove the two 24.1mm Phillips screws near the front of the case.
- Remove the five 33.0 mm Phillips screws towards the back of the case.

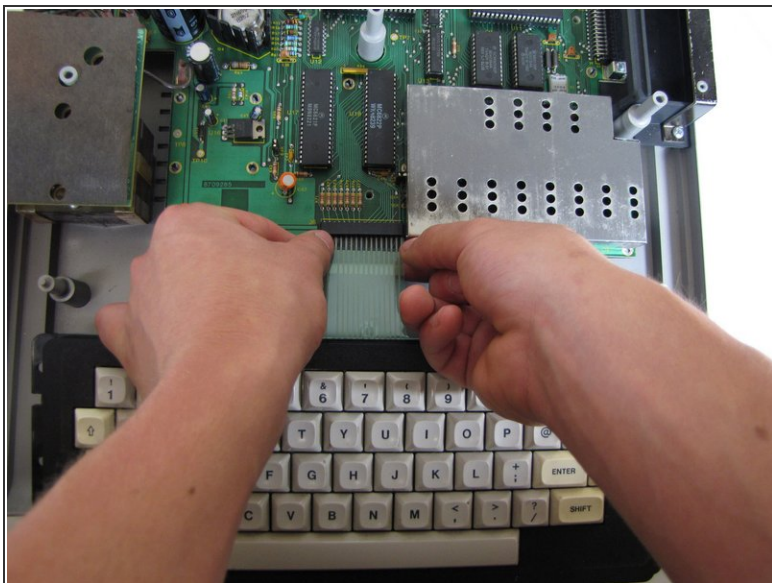
## Step 2



- Carefully flip the computer right side up.
- Lift off the top half of the case.

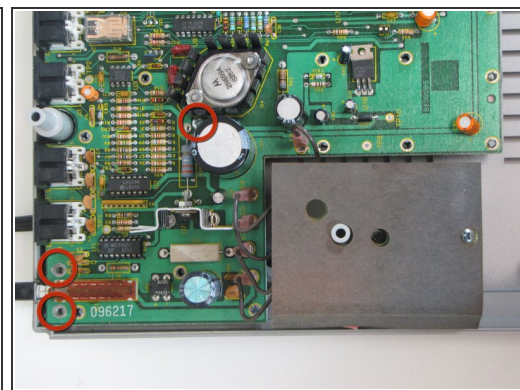
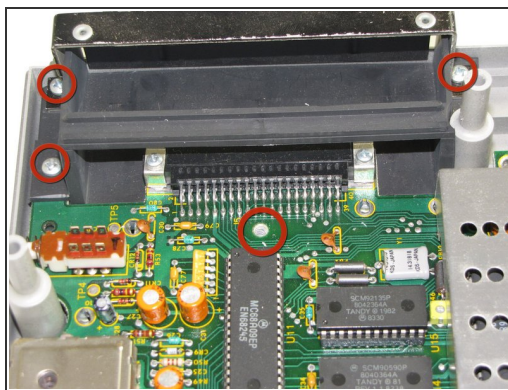
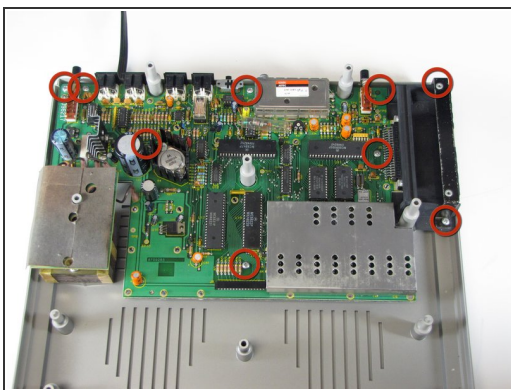


## Step 3 — Keyboard



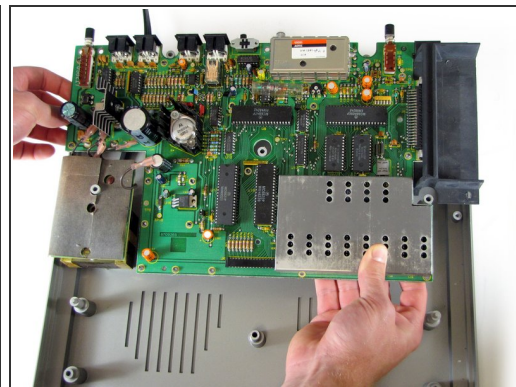
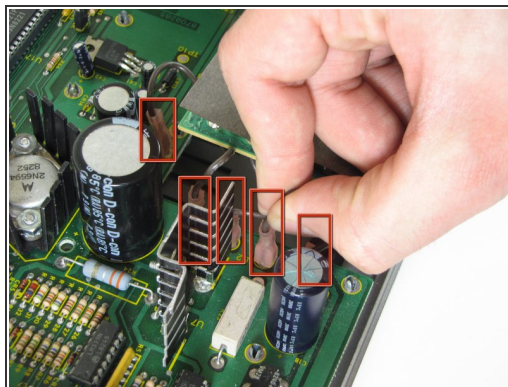
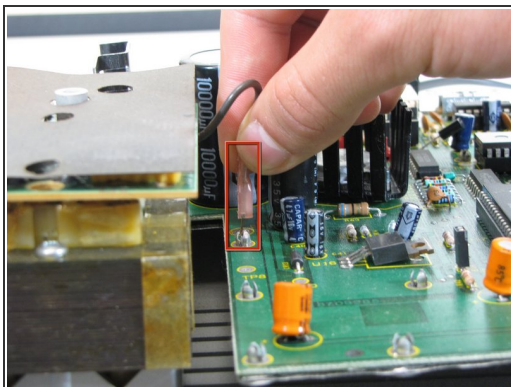
- Near the motherboard, gently pull the keyboard ribbon cable until it becomes free.
- Lift the keyboard out of the case.

## Step 4 — Motherboard



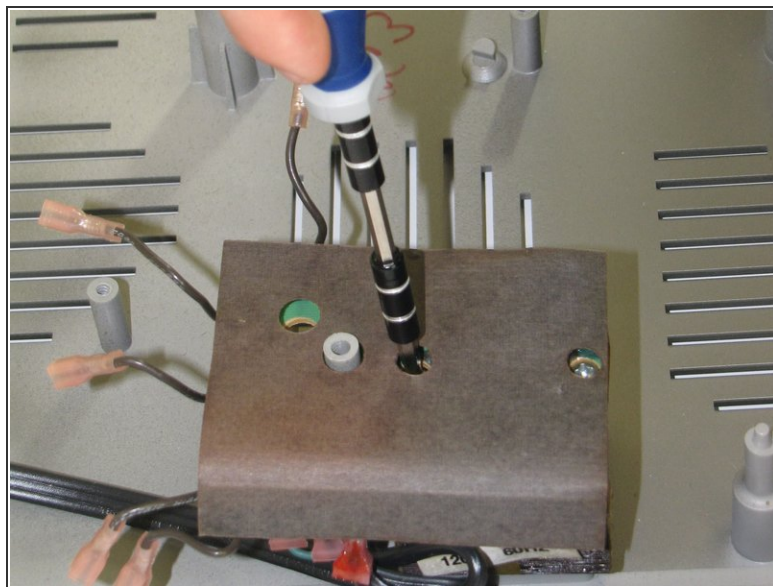
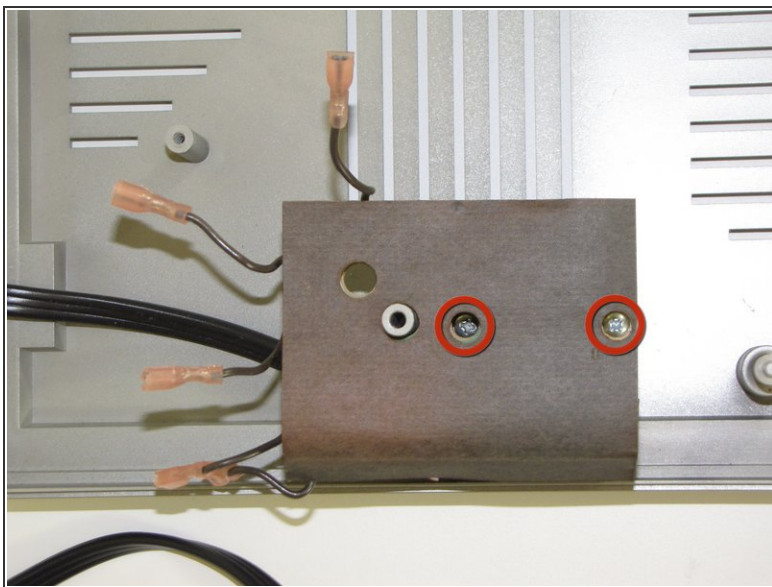
- Remove the nine 15.24 mm Phillips screws securing the motherboard in place.
- When removing the spring door, make sure to keep the door closed.

## Step 5



- Remove the 5 jumper cables from the motherboard.
- Once the jumper cables lift the motherboard up gently; it should lift out easily.

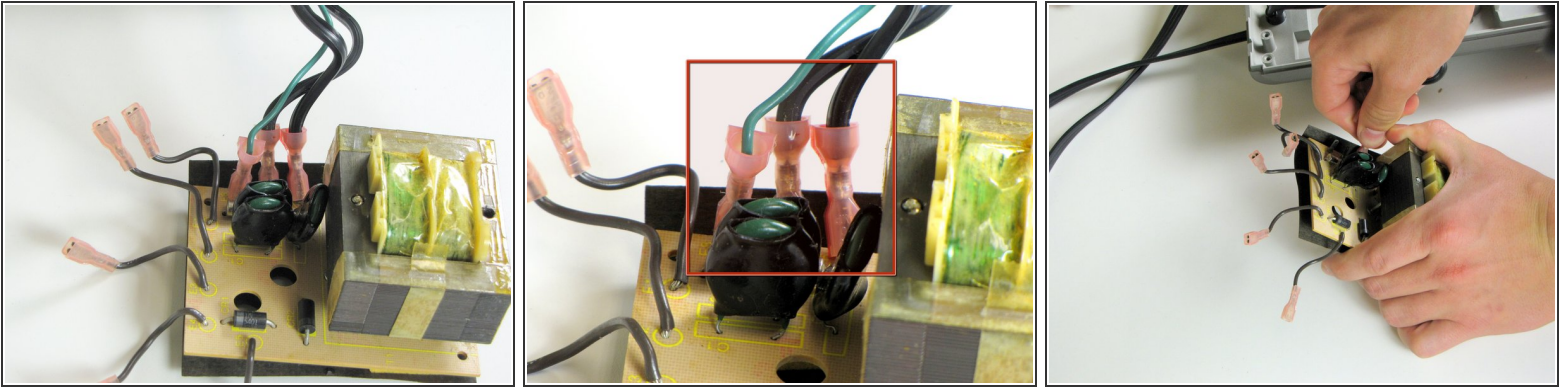
## Step 6 — Fuse



- Remove the two 40.6mm Philips screws securing the TRS-80 transformer.

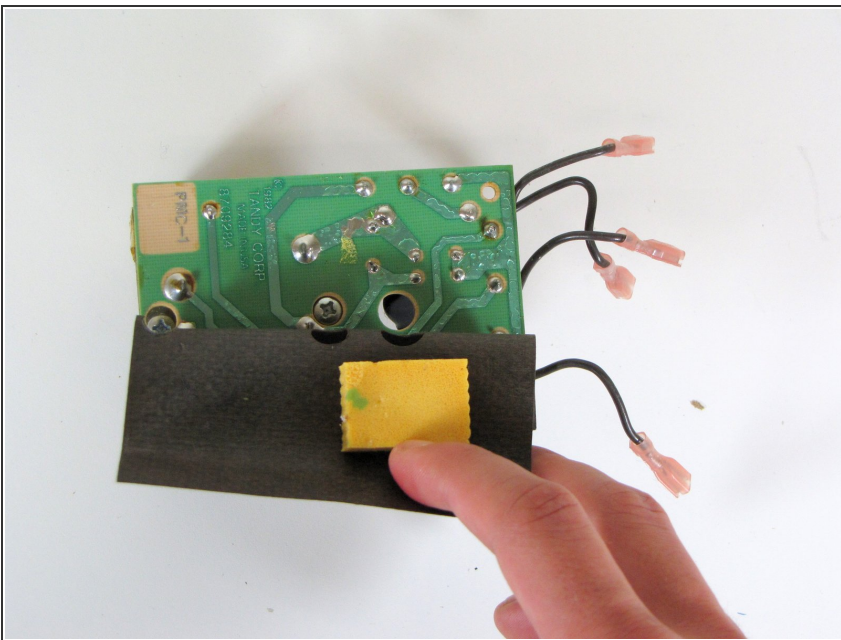


## Step 7



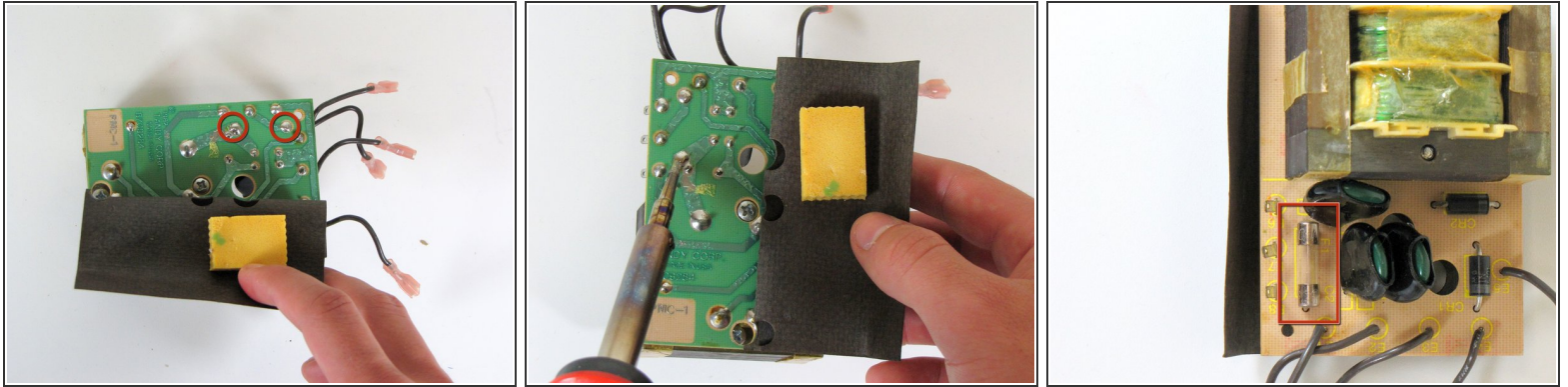
- Remove the power cable jumpers from the power supply.

## Step 8



- Gently peel back the protective film on the top of the transformer.

## Step 9



- Locate the two points the fuse is soldered into the circuit board.
- Using a soldering iron and soldering wick, desolder and remove the fuse.
- Place the new fuse into the location of the old one, and solder it in place.

To reassemble your device, follow these instructions in reverse order.