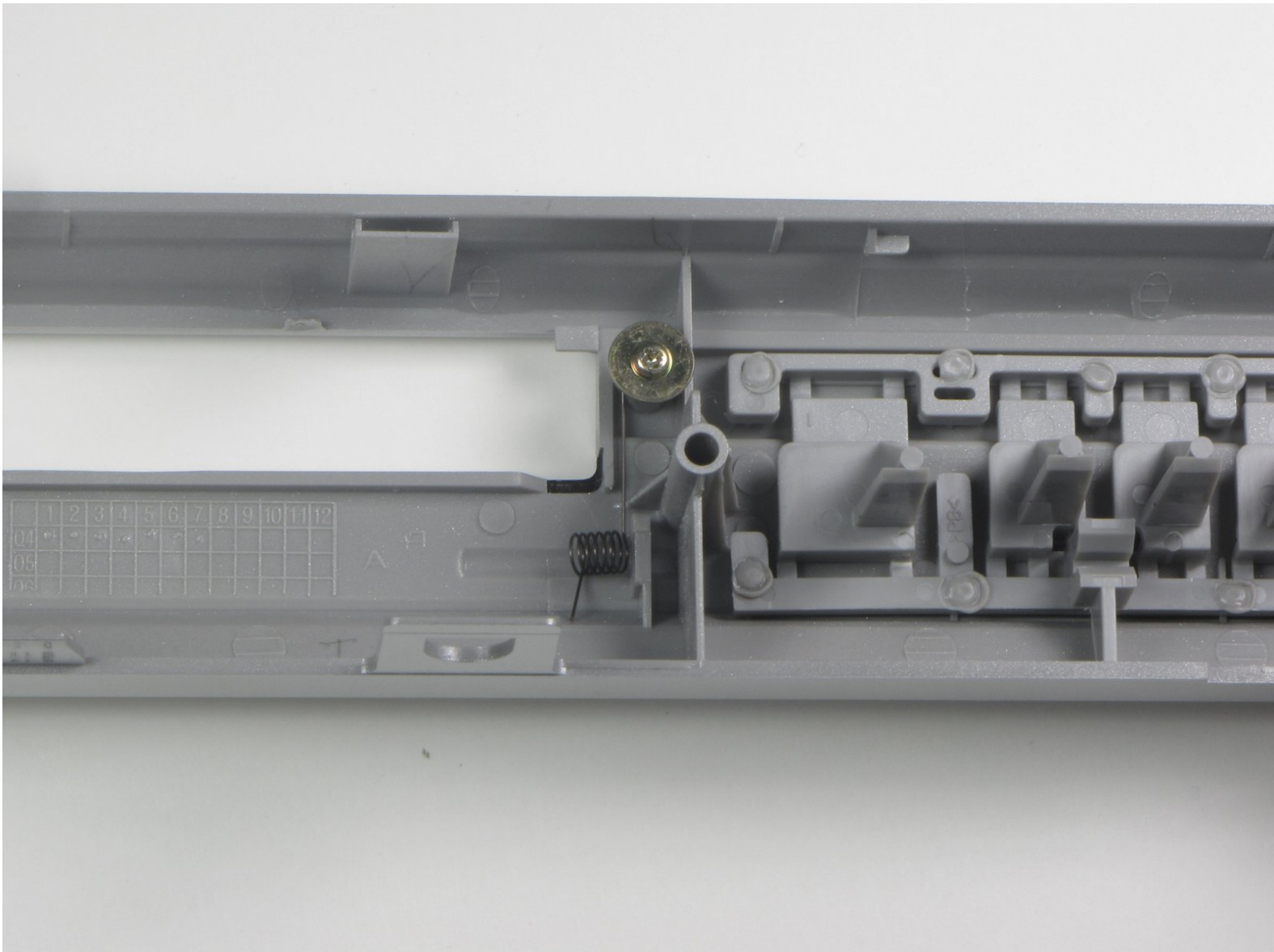




Toshiba SD-K740 Front Flap Tray Door Spring Replacement

This guide gives instructions on how to remove...

Written By: John Lokker



INTRODUCTION

This guide gives instructions on how to remove the spring connected to the disc drive front flap of the Toshiba SD-K740 DVD player.



TOOLS:

- [Phillips #2 Screwdriver](#) (1)
-

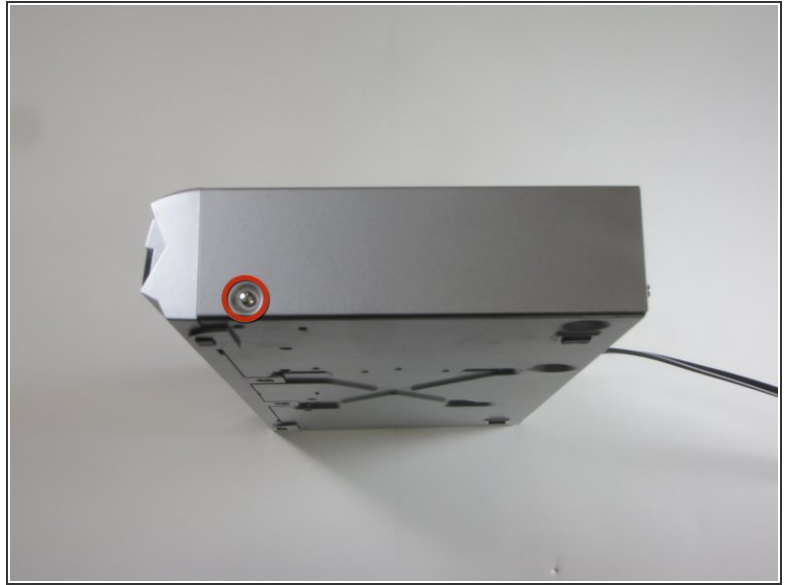
Step 1 — Top Panel



⚠ Unplug the DVD player before beginning.

- Remove the three 7.7 mm screws from the back panel using a Phillips #0 screwdriver.

Step 2



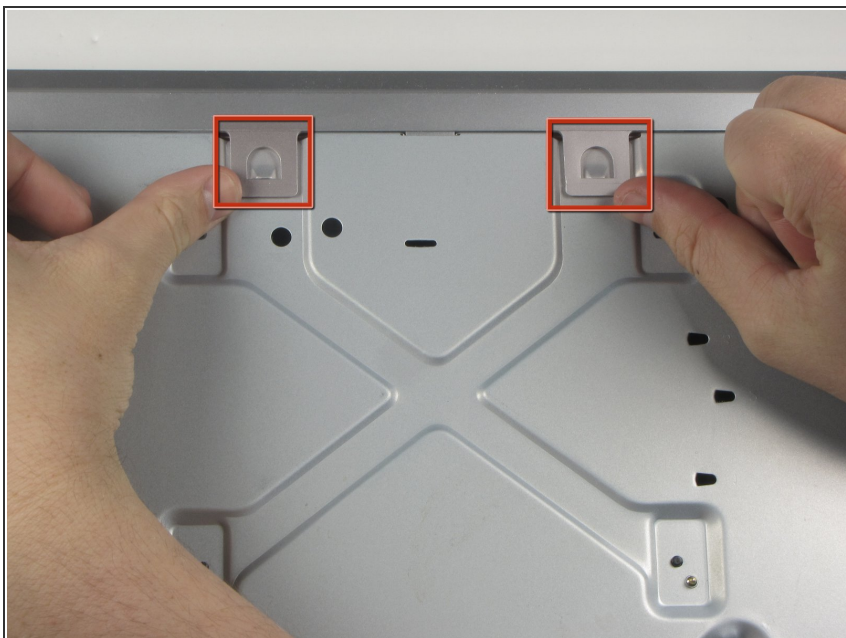
- Turn the DVD player on its side.
- Remove the 7.7 mm screw.
- Flip the DVD player onto its other side.
- Remove the 7.7 mm screw.

Step 3



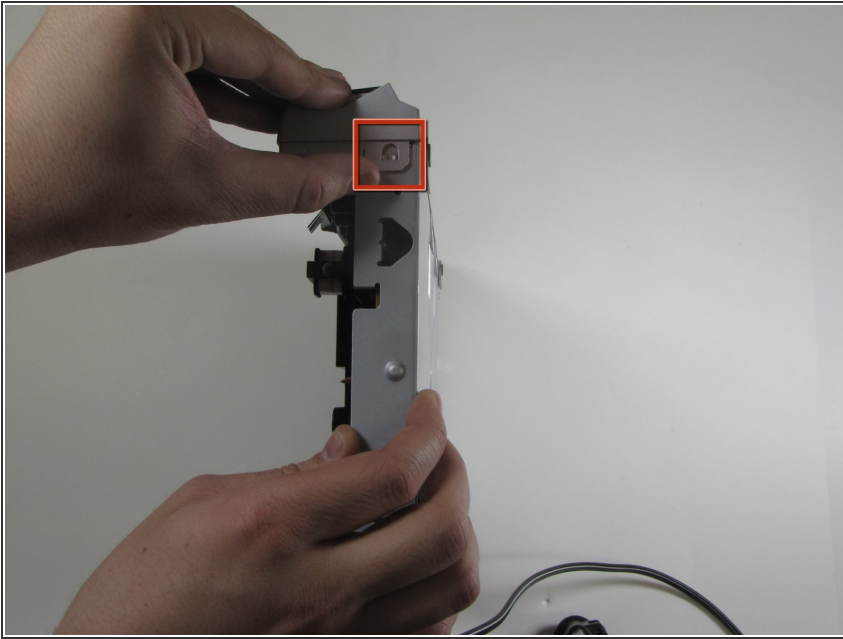
- Flip the DVD player over onto its front face.
- Remove the back panel by lifting up and pulling it towards yourself.

Step 4 — Front Panel



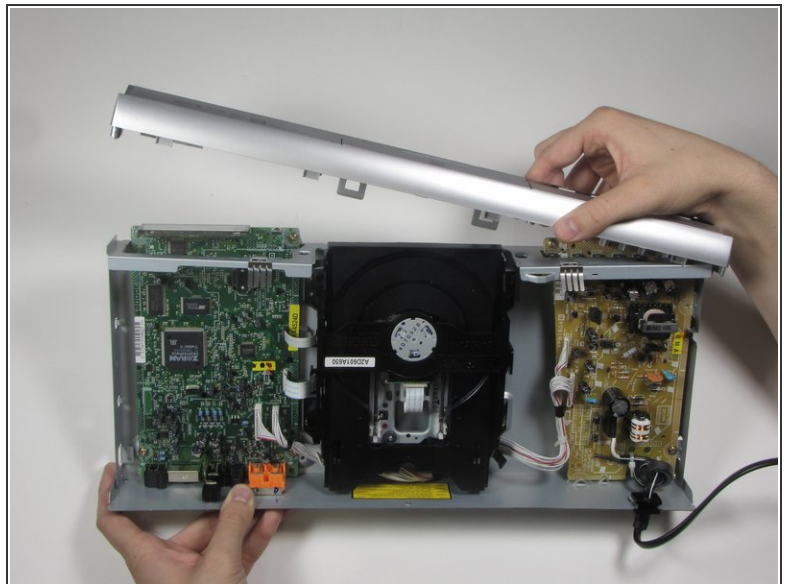
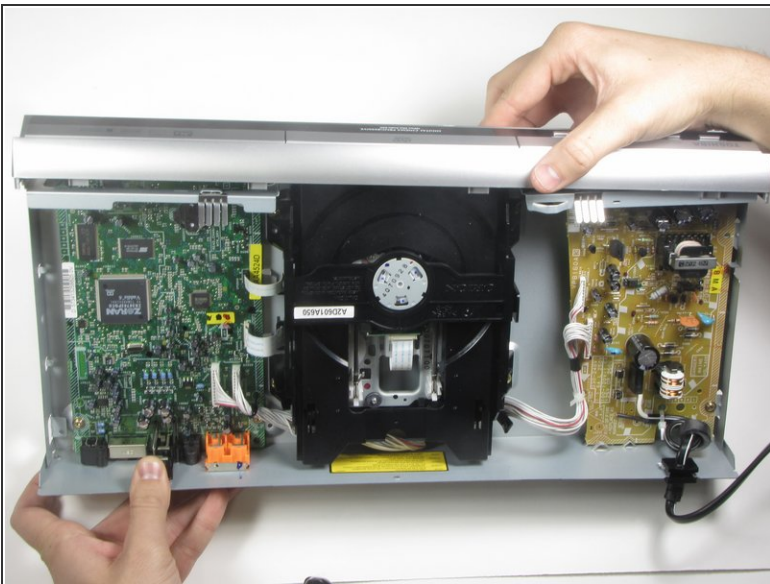
- ① Flip the DVD player so its top is sitting on your working surface.
- Lift and push away the two tabs located in the middle of the player.
- ⚠ The front panel will not detach during this step, so do not force it.

Step 5



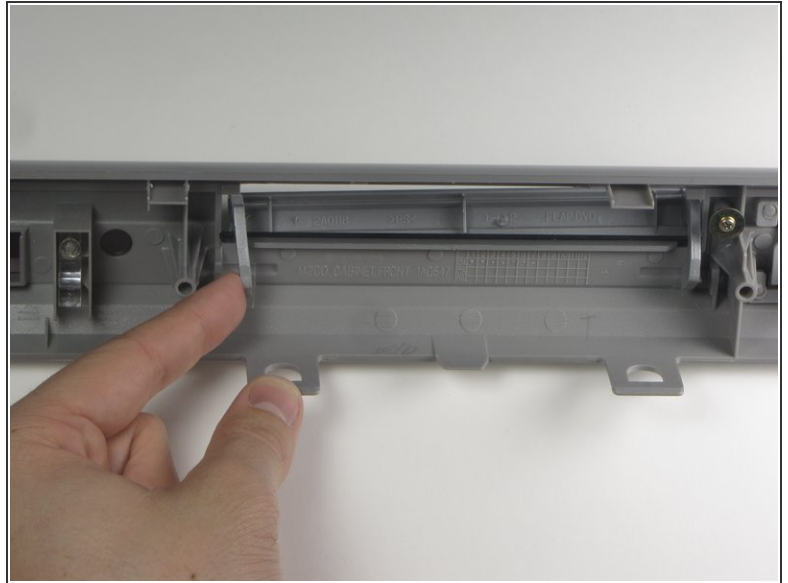
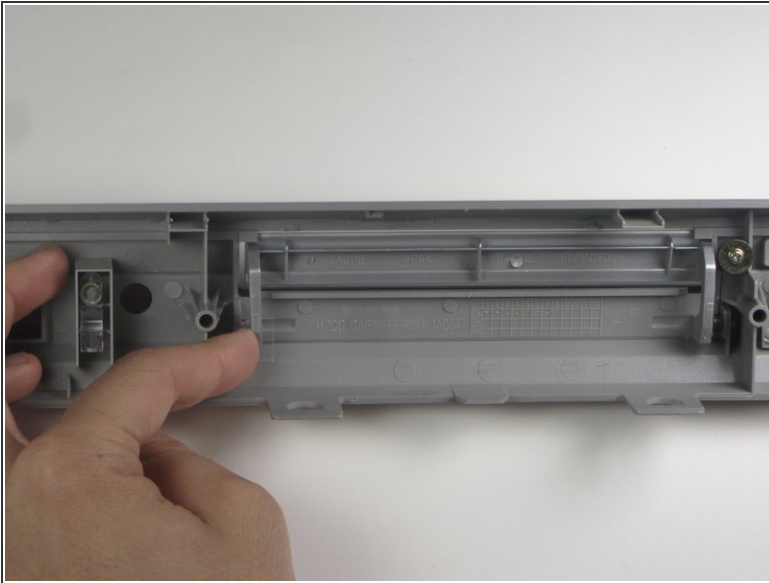
- ❗ Flip the DVD player on its side.
- Lift and slide forward the single tab on the side.
- ⚠ The front panel will not detach during this step, so do not force it.

Step 6



- Grasp the front panel and pull forward to your right to remove it.

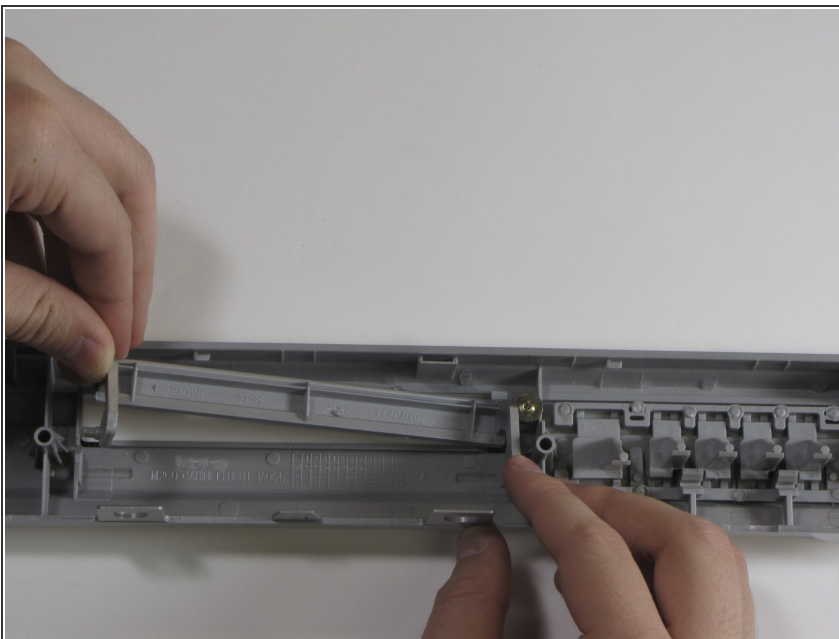
Step 7 — Front Flap Tray Door



- On back side of front panel very carefully apply pressure to the left hand side of the flap hinge.

⚠ There is just enough tolerance in the plastic to allow removal, be careful of brittle plastic.

Step 8

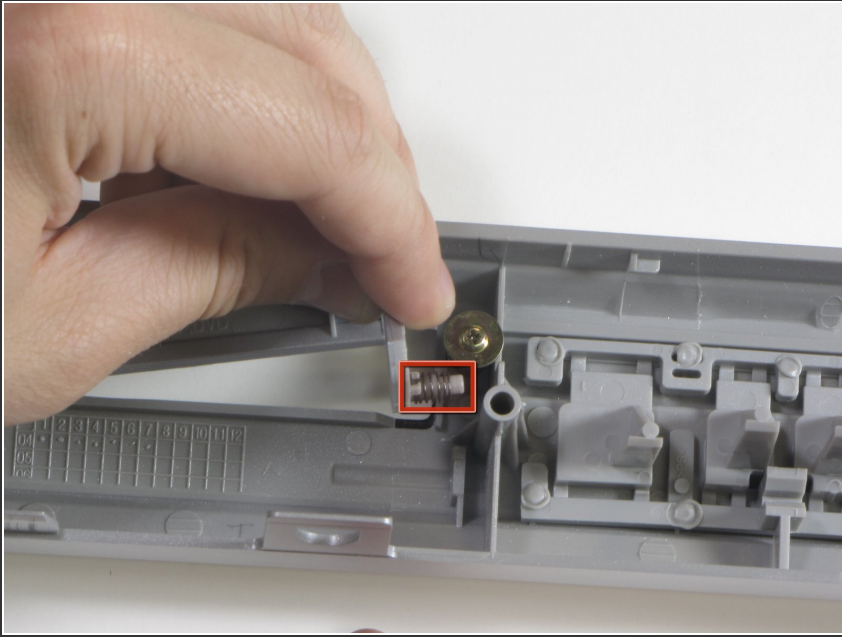


- Once the peg is free from the left restraint, carefully remove the left part of the flap.
- Carefully remove the right peg from the restraint.

⚠ Do not pull away from the front panel because the spring is still attached.

⚠ Do not force the plastic.

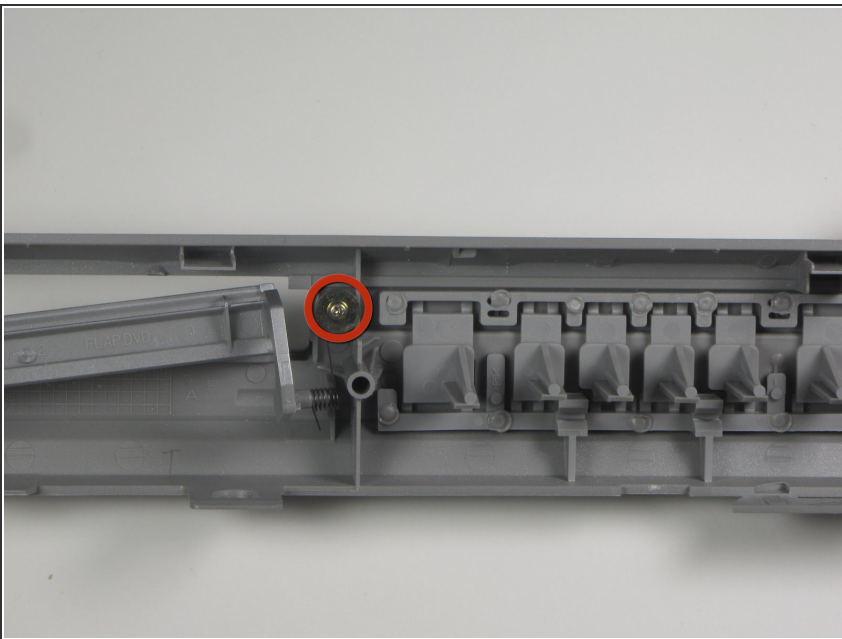
Step 9



- Remove the spring from the end of the right peg by pulling the door away from the spring.

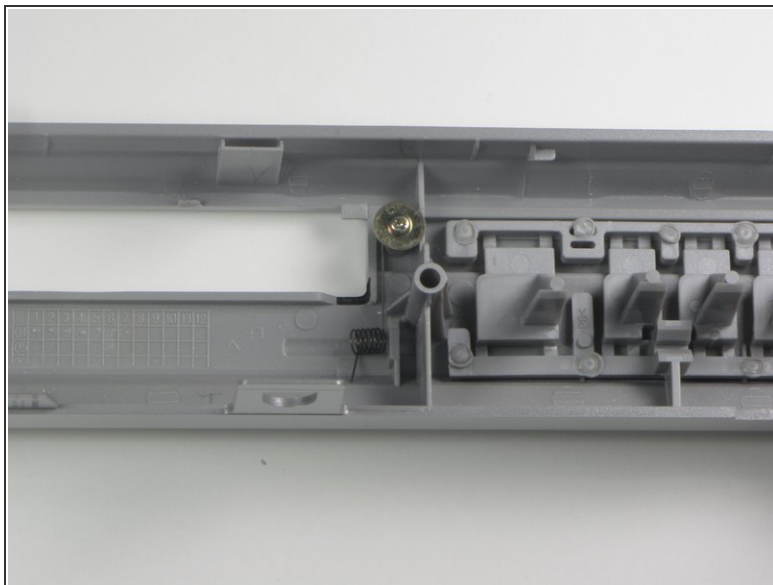
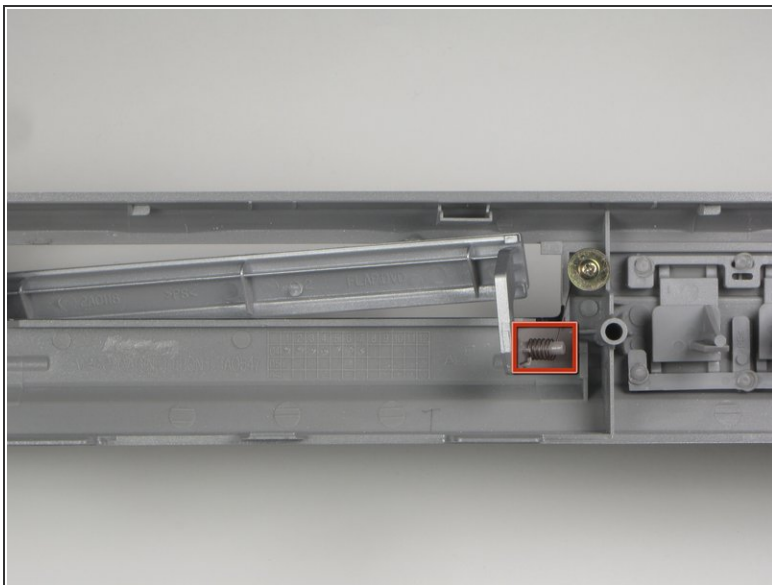
⚠ Do not pull away from the front panel until the spring has been removed from the flap.

Step 10 — Front Flap Tray Door Spring



- Remove the .384 inch screw holding the spring to front panel.

Step 11



- Slide the spring off of the underlying peg.

To reassemble your device, follow these instructions in reverse order.