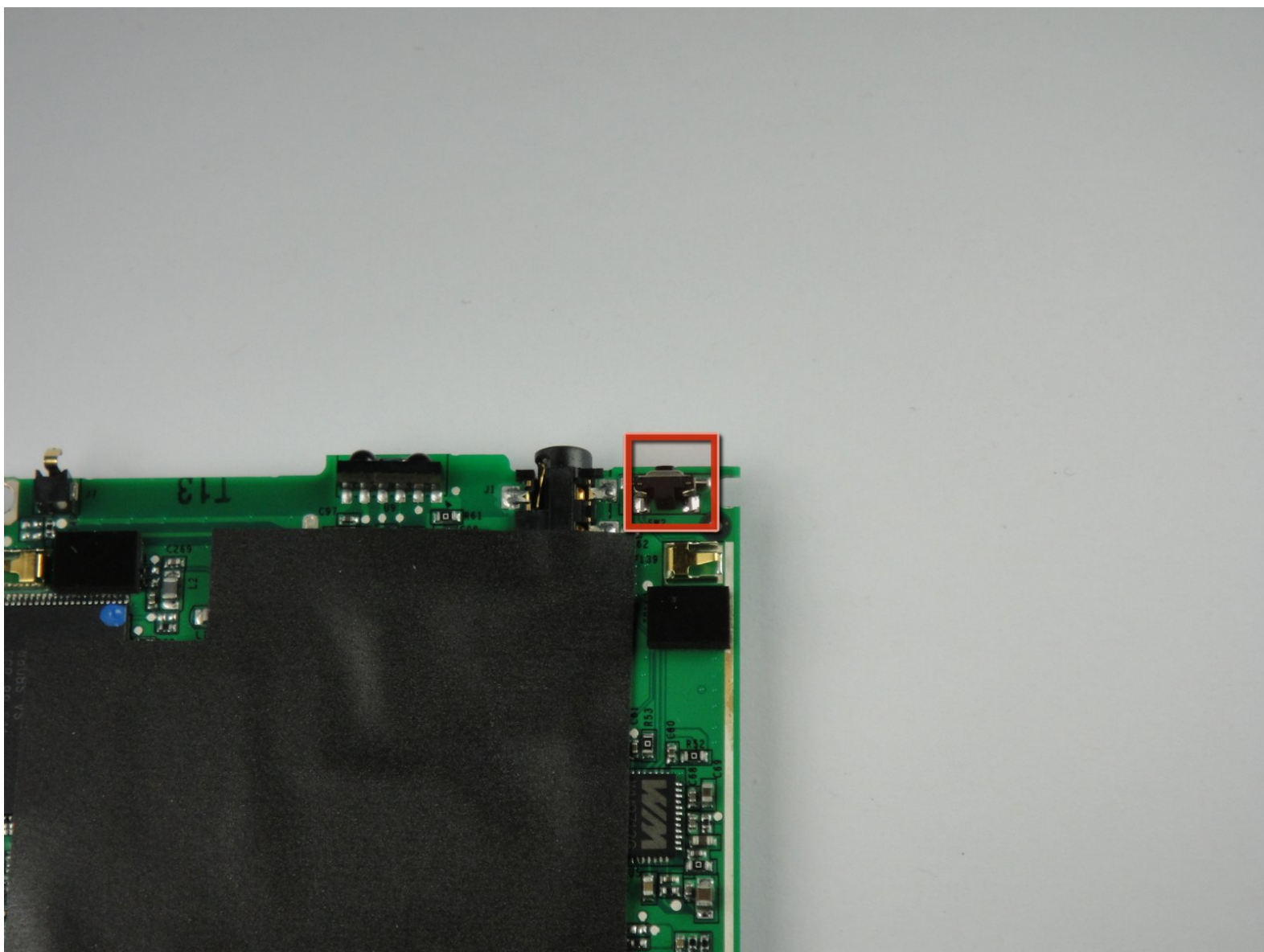




Palm TX Power Button Replacement

How to repair the Palm T|X power button.

Written By: Spencer Lewson



INTRODUCTION

An unresponsive power button is a very common problem. Typically, this problem occurs when the solder between the power button and the motherboard weakens. For more information and other fixing alternatives see the link below:

<http://forum.brighthand.com/palm-tx/2358...>

TOOLS:

- [iFixit Opening Tools](#) (1)
 - [Soldering Workstation](#) (1)
 - [T5 Torx Screwdriver](#) (1)
-

Step 1 — Back Panel



- Orient the device so that the display faces forward.
- Remove the stylus from the right side.

Step 2



- Turn over the device so that the back panel faces forward.
- Use a T5 Torx screwdriver to remove the four 6.35mm corner screws.

Step 3



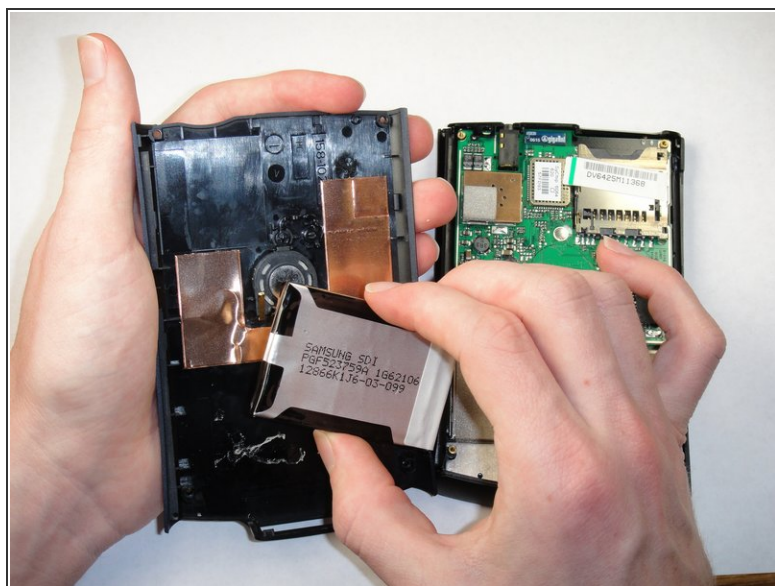
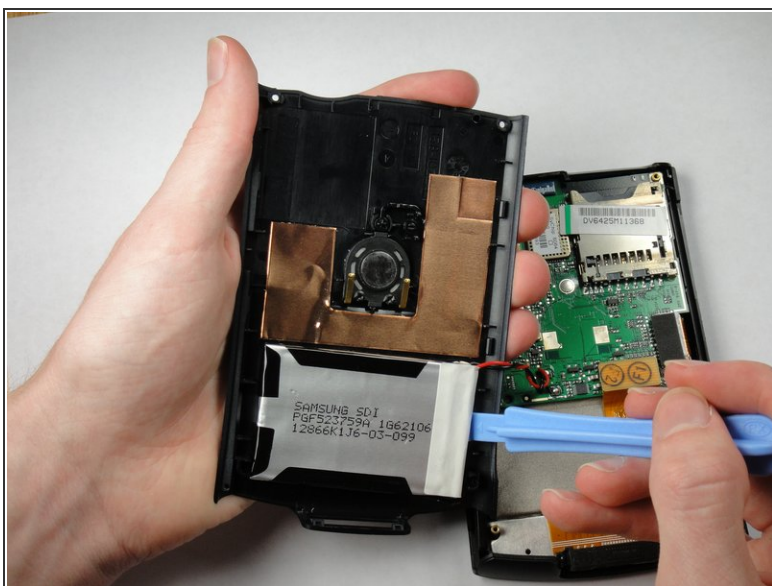
- Rotate the device so that the display faces forward.
- Insert a plastic opening tool with the angled tip pointing downward into the crevice on the left side of the device.
- Pry along the crevice to loosen the back panel.
- Repeat this process for the right side.

Step 4



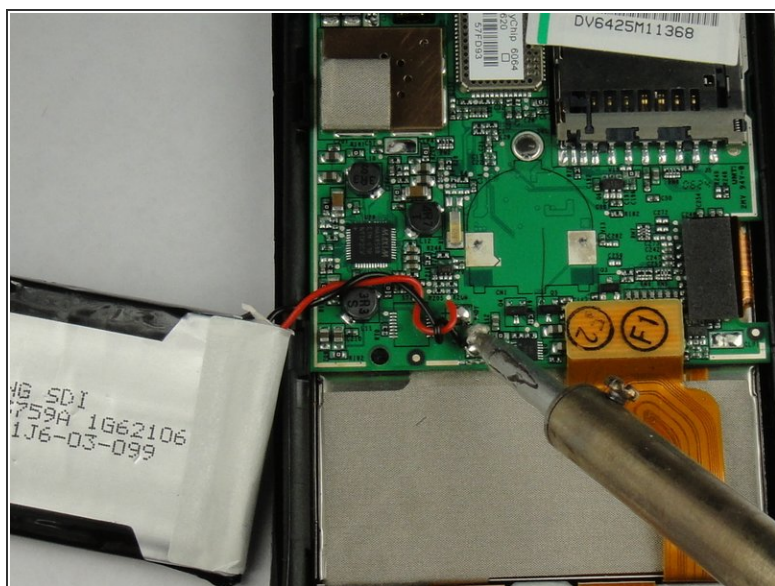
- Carefully pry the back panel to open the device.
- ⚠ Be careful not to break the wire that connects the battery pack to the motherboard.
- ℹ When reassembling, snap the back panel back into place and then insert the top cover.

Step 5



- Use a plastic opening tool to peel the battery pack from the back panel.
- ❗ The battery pack is glued to the back panel so removing it may require considerable effort.

Step 6 — Battery Pack



- Use a soldering iron to disconnect the battery wires from the motherboard.
- For soldering instructions, you can view the [Soldering Guide](#).

Step 7 — Motherboard



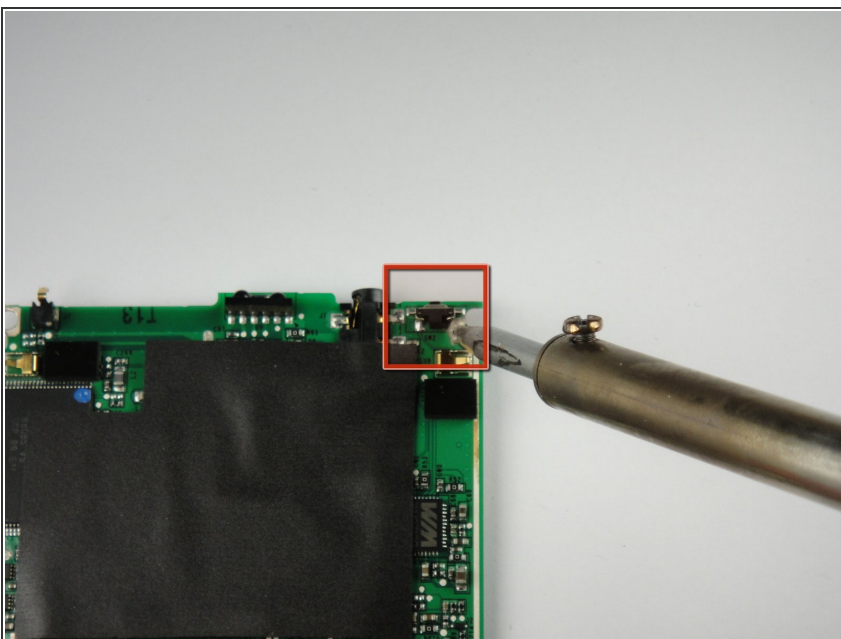
- Pull straight up on the ribbon cables located on the bottom right of the motherboard to disconnect them.

Step 8



- Lift the mother board out of the device.
- ⓘ A weak adhesive attaches the motherboard to the device.
- ⓘ The red wire in the picture will not be attached to your device at this point.

Step 9 — Power Button



- Flip the motherboard so that the black rubber cover faces upward. The power switch is in the top right corner.
- Remove the button with a soldering iron.
- For soldering instructions, view the [Soldering Guide](#).

To reassemble your device, follow these instructions in reverse order.