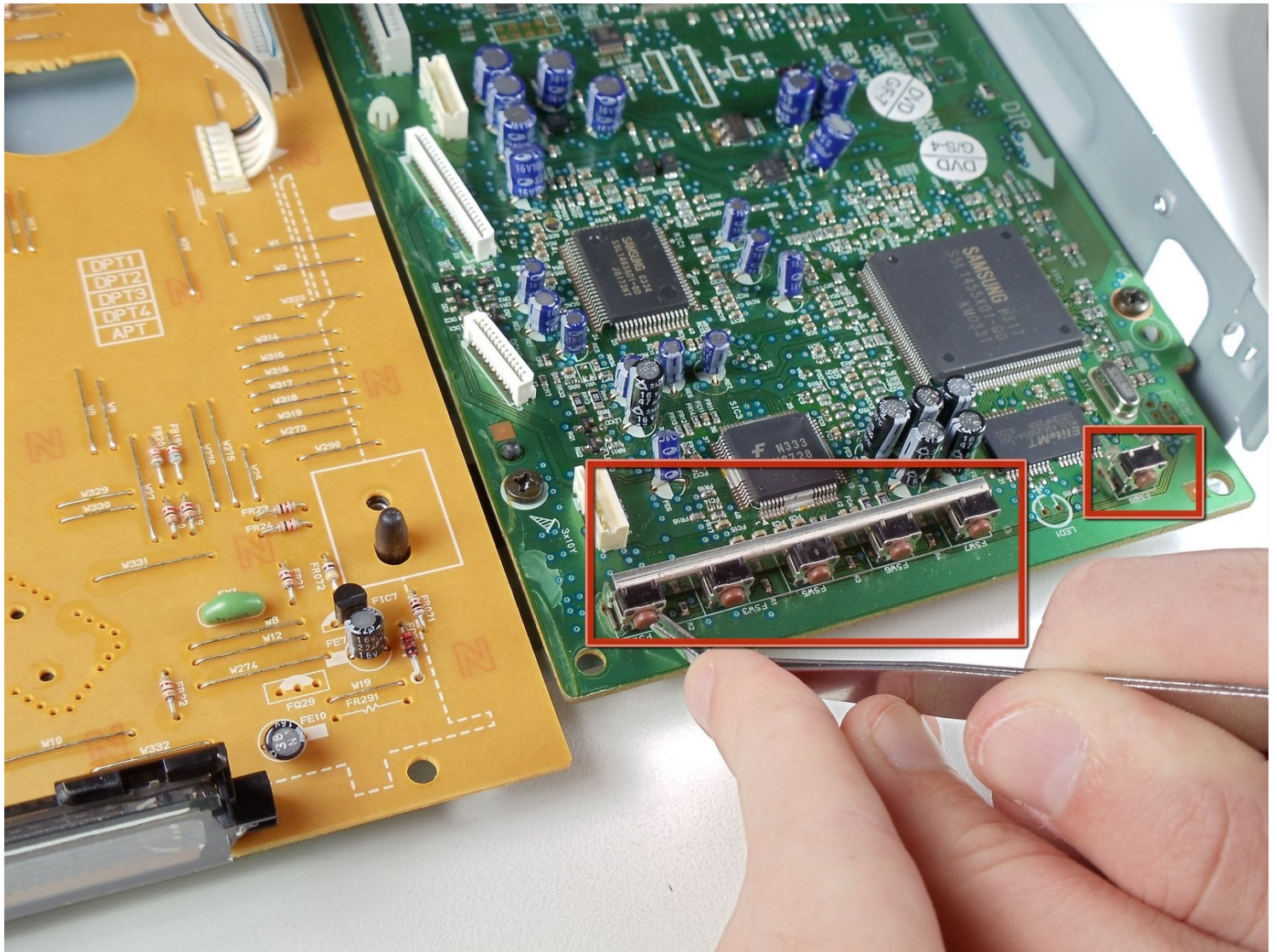




How to check or clean Samsung DVD-P230 buttons

Written By: Mitchell Hart



TOOLS:

Phillips #2 Screwdriver (1)

Step 1 — Outer Cover & Faceplate



- Open the tray by pressing the eject button
- Remove the DVD tray faceplate by pushing the faceplate up off of the tray.

Step 2



- Press the eject button to insert the tray
- After the tray is closed unplug DVD player

Step 3



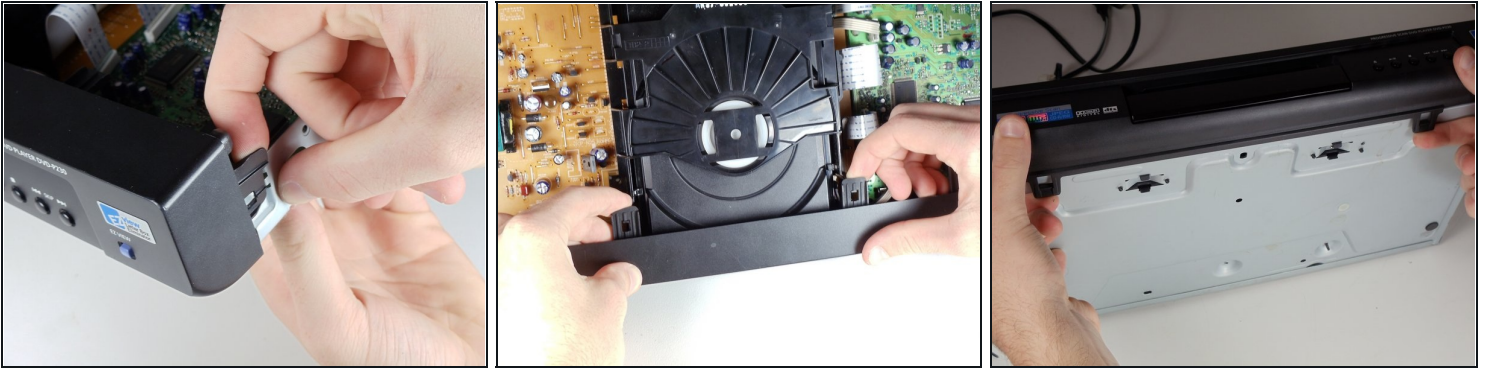
- Unscrew the 3 screws in the back.

Step 4



- Pull the outer case upward and then towards you.

Step 5



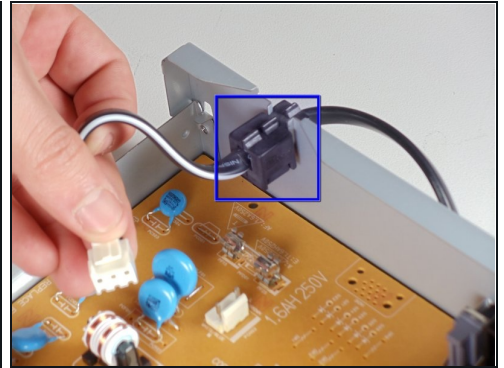
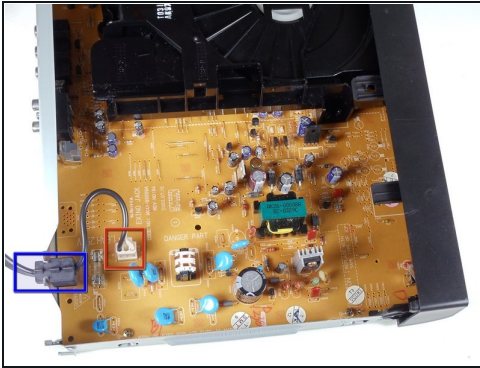
- There are six symmetrically placed tabs holding in the front faceplate. Unhook these six tabs to loosen the faceplate.

Step 6



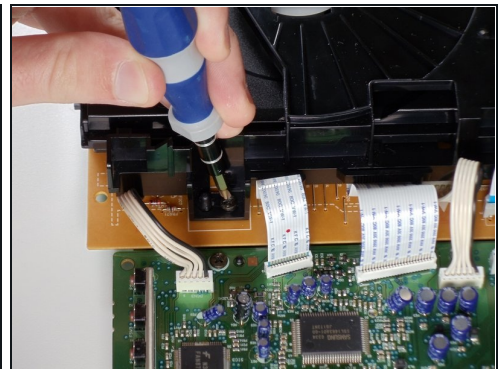
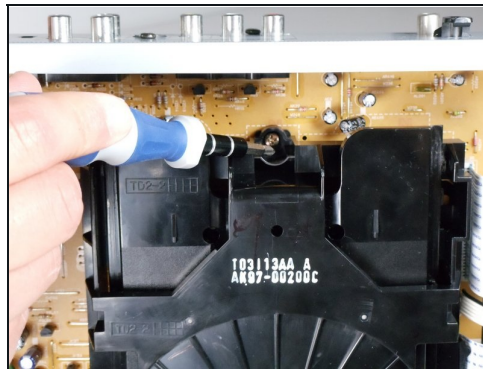
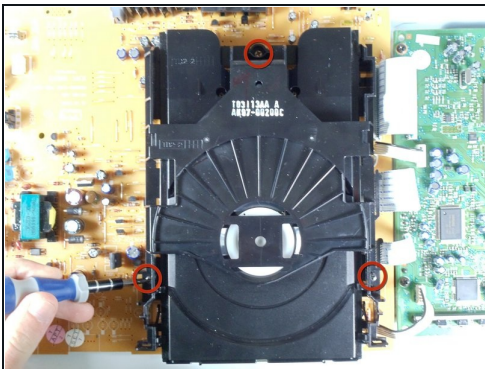
- Pull off front faceplate. This may take a couple of tries to get all six tabs unhooked simultaneously.

Step 7 — Power Cord



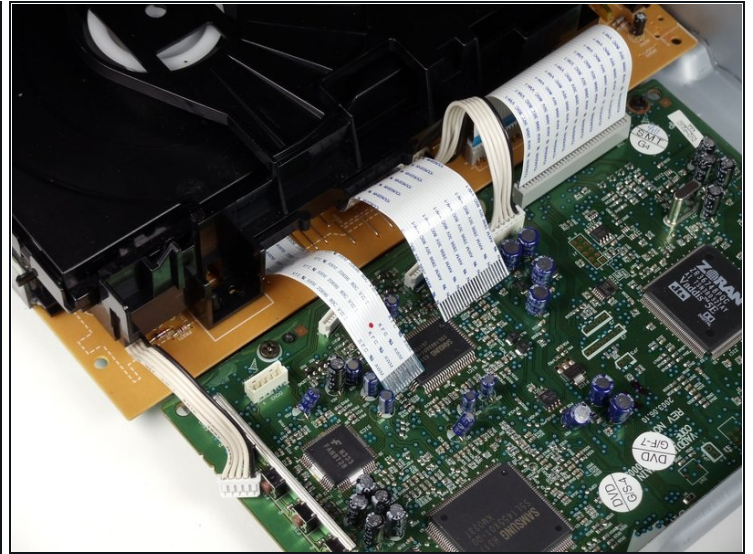
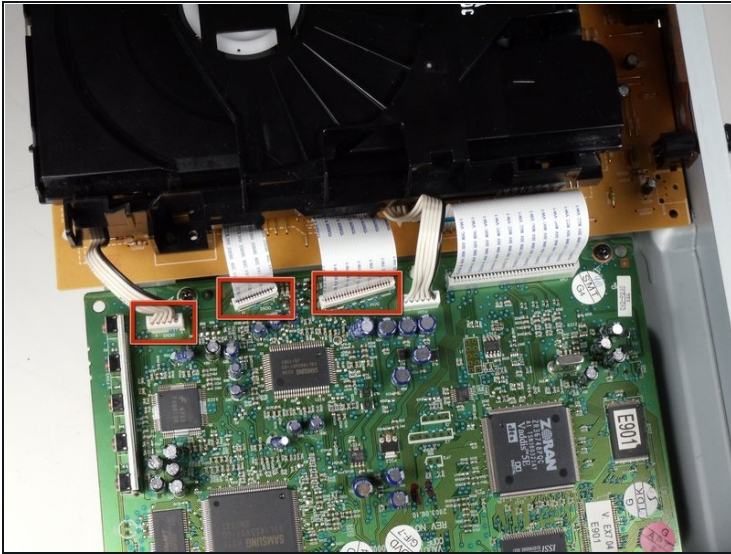
- Locate the white clip that attaches the cord to the motherboard
- Grasp clip and squeeze to release
- Lift up and remove power cord
- Slide cord mount from outer case

Step 8 — Tray



- Remove the three screws holding in the DVD tray

Step 9



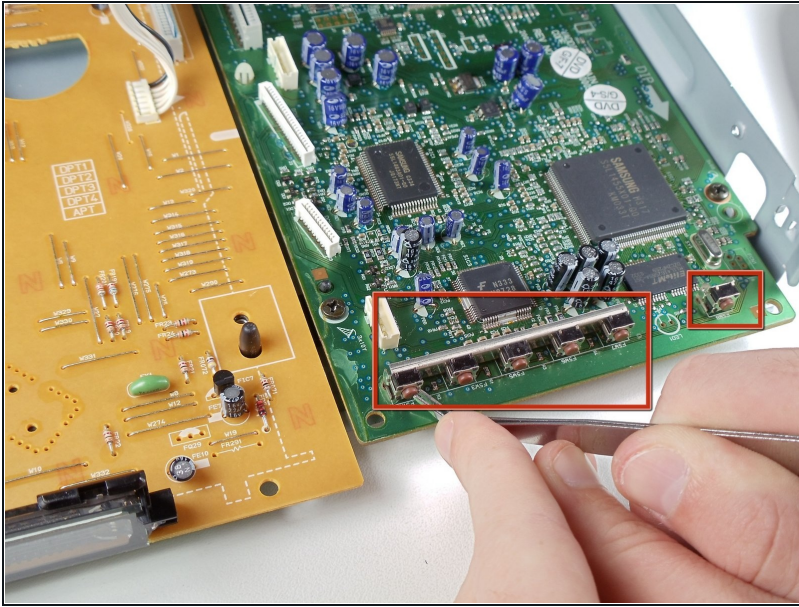
- Remove the power cord and first two ribbons by pulling them directly out of their sockets.

Step 10



- Gently lift the DVD tray off of the motherboard.

Step 11 — How to check or clean Samsung DVD-P230 buttons



- Use the [tweezers](#) to make sure all the buttons aren't stuck.

To reassemble your device, follow these instructions in reverse order.