



Disassembling Nest Dropcam Pro Outer Case

This is intended to be a Prerequisite Only guide to remove the outer case of the Nest Dropcam Pro.

Written By: David Foens



INTRODUCTION

Make sure device is unplugged before proceeding. This Prerequisite Only guide is necessary for all replacements.



TOOLS:

- [Phillips #0 Screwdriver](#) (1)
-

Step 1 — Outer Case



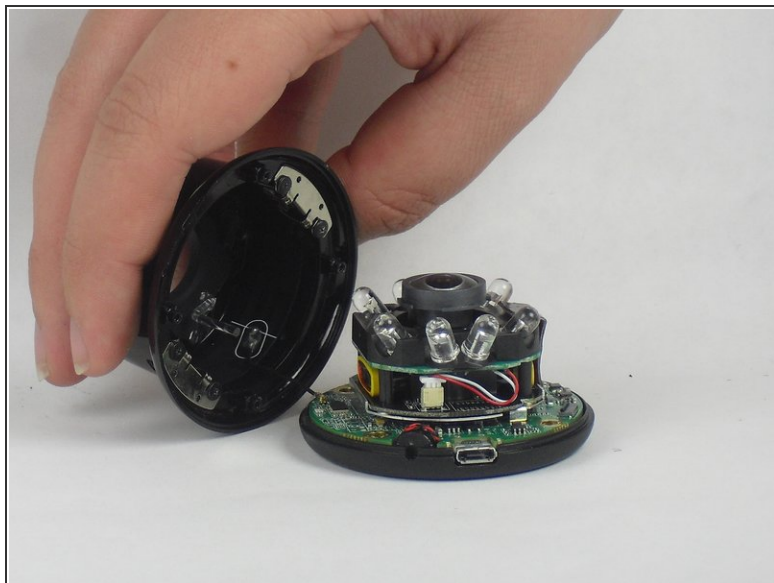
- Press in the mounting clips on each side of the case to remove the camera from the mount.

Step 2



- Using a Philips #0 screwdriver, remove the four 3 mm screws.

Step 3



- Lift the front of the case slowly, as there is an antenna cable attached to the motherboard.
- Carefully disconnect the antenna cable from the motherboard. You will feel this cable "pop" out of place when disconnected.

To reassemble your device, follow these instructions in reverse order.