



Nerf N-Strike Elite Strongarm Barrel Replacement

If the loading barrel is jammed and does not rotate, this guide will show you how to remove the barrel for inspection. Sometimes, debris can get lodged between some components and lock the barrel in place.

Written By: Alexander Kim



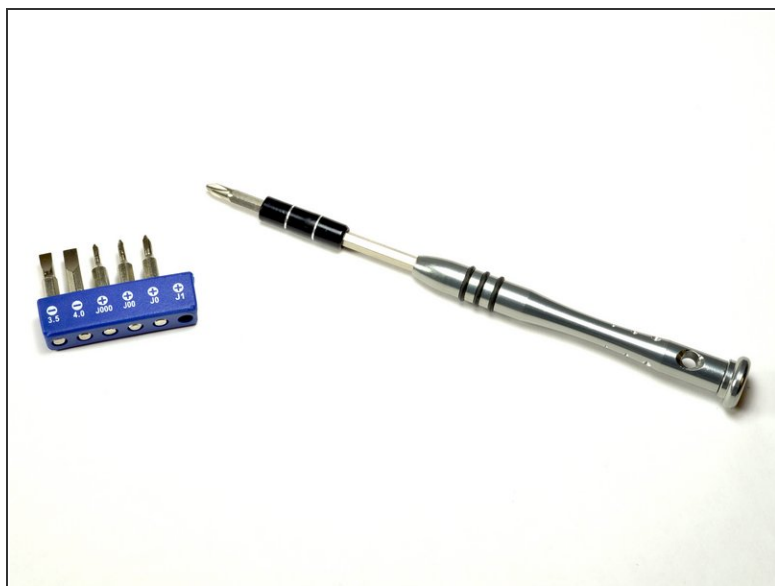
INTRODUCTION

This guide will show how to remove the barrel from the blaster. A good test to check if the barrel is stuck is shown in Step 6 (we suggest to do this before opening the blaster).

TOOLS:

- [Phillips #1 Screwdriver](#) (1)
-

Step 1 — Outer Shell



- Lay the Nerf Strongarm on its side, left side facing up.

Step 2



- Locate the 12 Philips head screws and remove them: Head Diameter= 4.3mm, Thread Pitch= 1mm, Screw Length= 8mm

Step 3



- Before removing the cover, make sure to first remove the cover for the cocking mechanism. The top half is freely removable.

⚠ The other half of the cocking mechanism is connected with a spring which may slide off the blaster. Be advised this is normal but worth watching to avoid damaging the spring.

Step 4



- At this time, remove the blaster cover to reveal its internals.
- ⓘ If the blaster is resting on its side, the barrel may shift slightly as it is leaning on itself (seen in the image). This is normal but should be handled with care to keep the blaster together.

Step 5



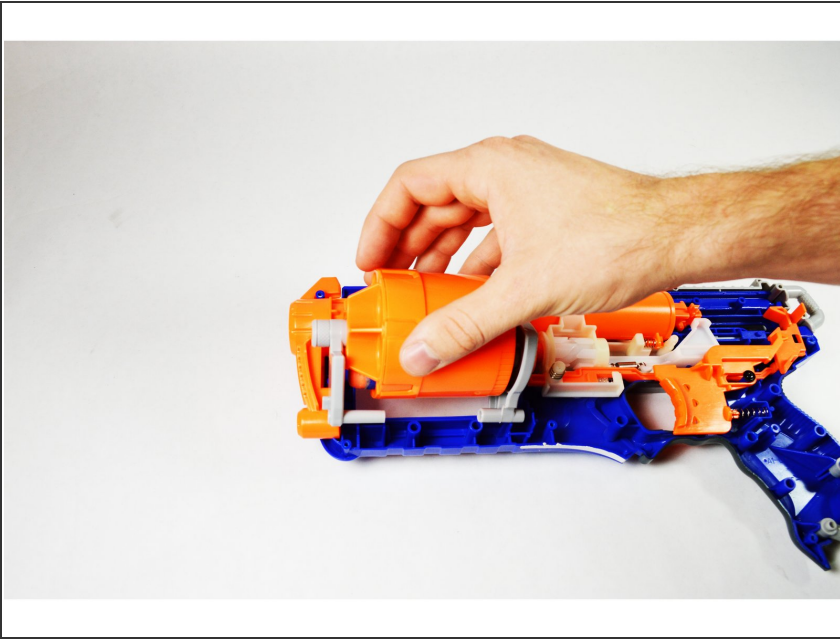
- Once the screws have been removed, lift the top half of the gun off.
- ⓘ Notice, the gray colored piece must be removed first in order for the larger half to be removed.
- Take care and try not to lose any smaller pieces as you open it up.
- Locking tab for attachments.

Step 6 — Barrel



- Start by inspecting the barrel closer for broken components.
- ⓘ Pressing the unloading button is a good test to check if the barrel will rotate out.
- If the barrel fails to cooperate, continue onto the next steps.

Step 7



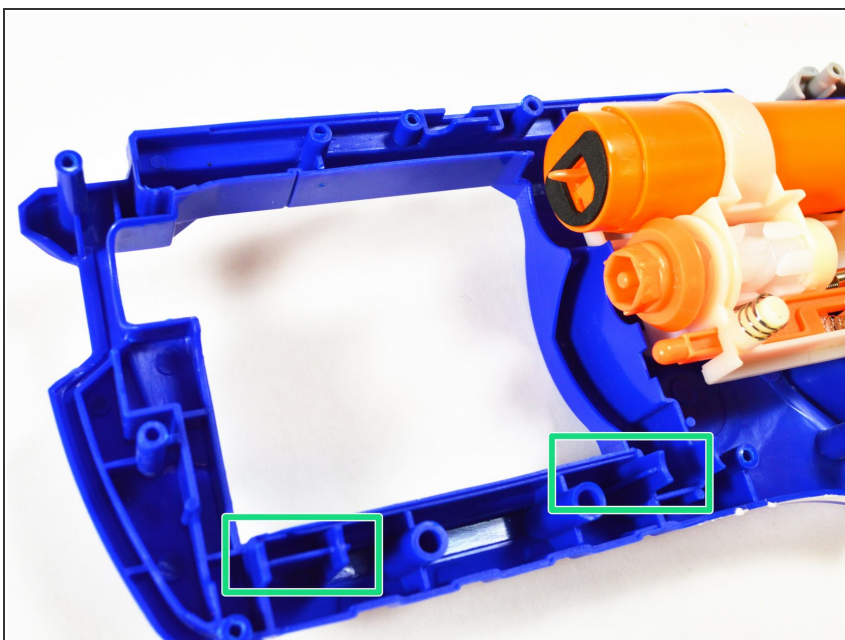
- Once the cover is off, the barrel component will be free and removable.

Step 8



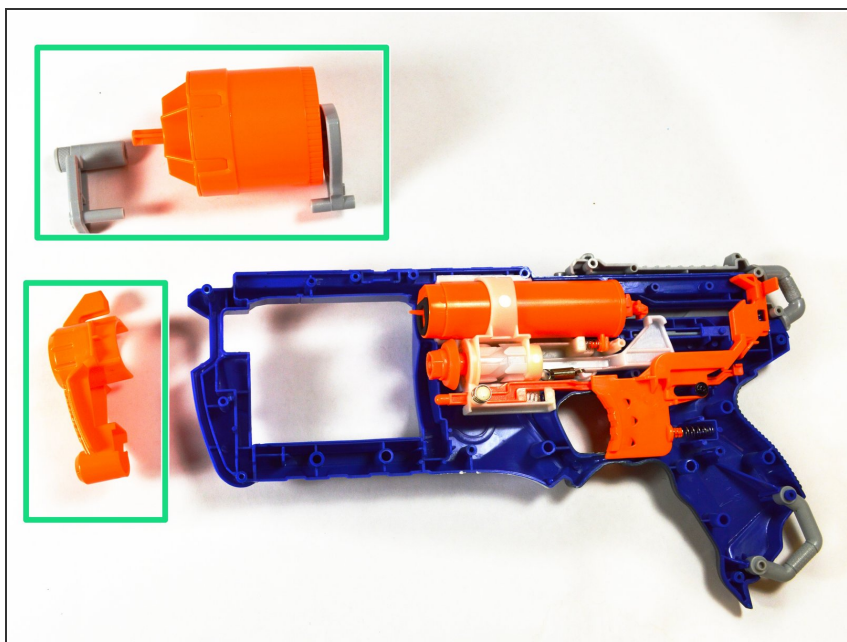
- Once the barrel is removed, continue by removing the front shaft. This component is also independent of the blaster and does not require tools.

Step 9



- Look for any signs of debris or any damaged locations that may be causing the barrel to lock.

Step 10



- At this time, all components interacting with the barrel are removed.
- Take this time to inspect the barrel for any signs of debris or damaged locations.

To reassemble your device, follow these instructions in reverse order.