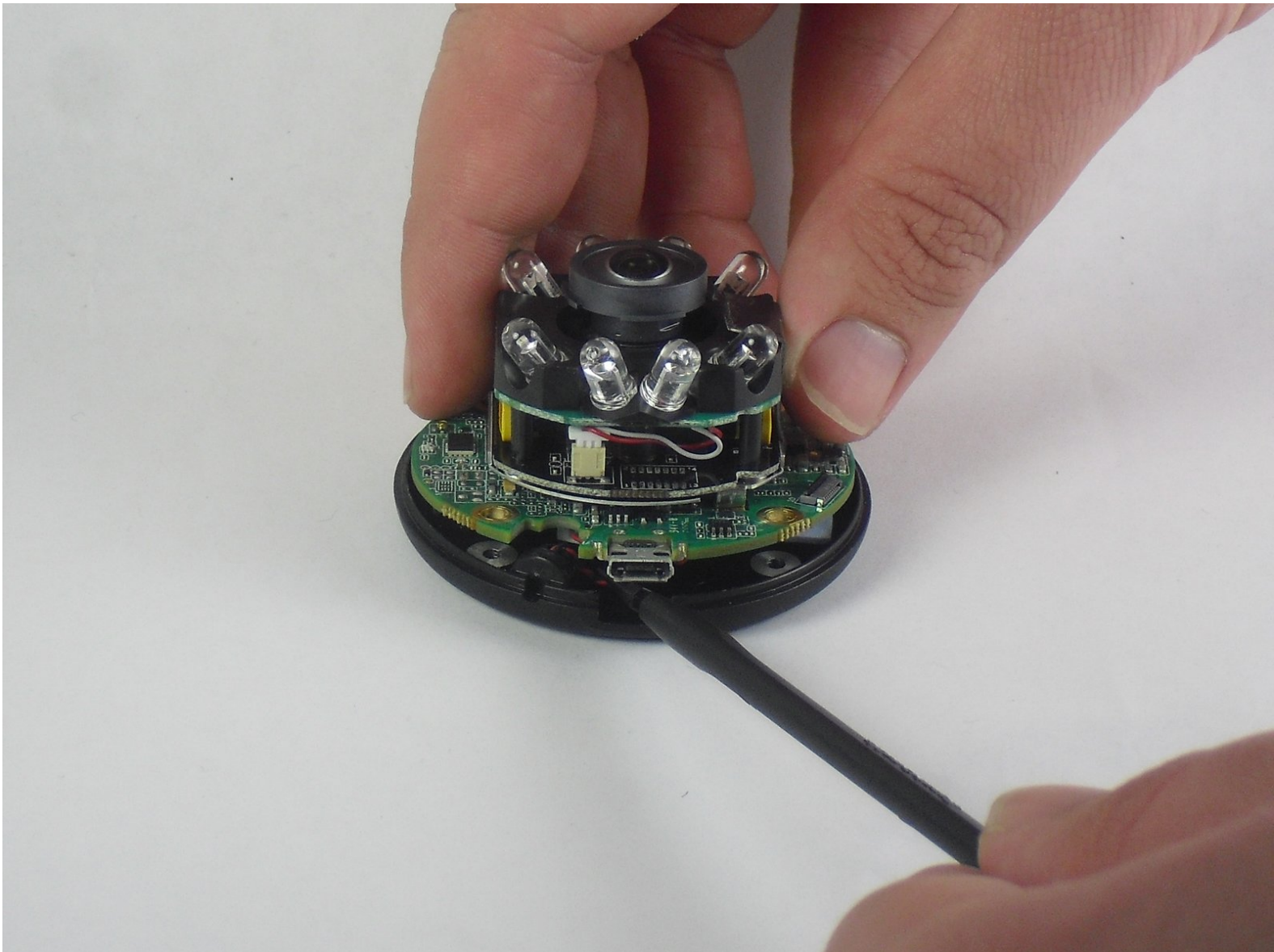




# Nest Dropcam Pro Micro-USB Port Replacement

Replace the Micro-USB port to ensure the Nest Dropcam Pro is receiving power.

Written By: David Foens



## INTRODUCTION

This guide is needed to replace the Micro-USB port if the Nest Dropcam Pro is plugged in but not receiving power. Make sure the device is unplugged before opening.

---

### TOOLS:

- [Soldering Workstation](#) (1)
  - [Desoldering Braid](#) (1)
  - [Phillips #0 Screwdriver](#) (1)
  - [Spudger](#) (1)
-

## Step 1 — Outer Case



- Press in the mounting clips on each side of the case to remove the camera from the mount.

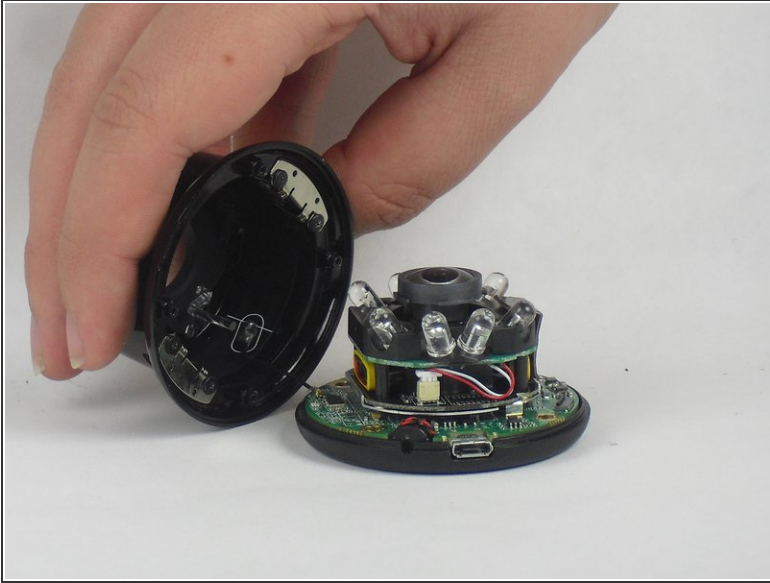
## Step 2



- Using a Philips #0 screwdriver, remove the four 3 mm screws.

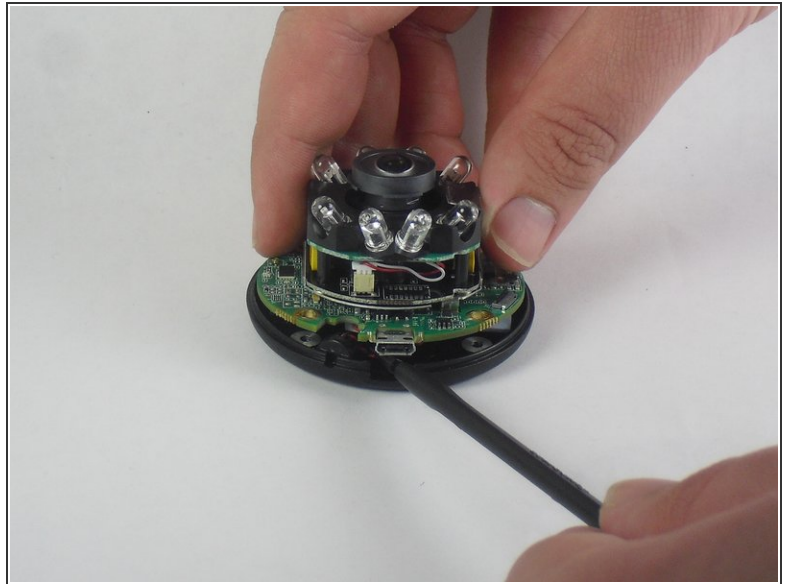
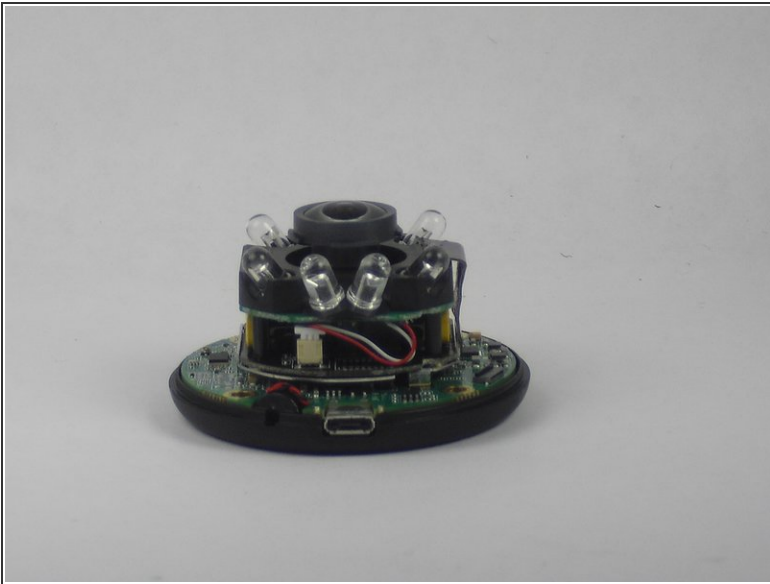


### Step 3



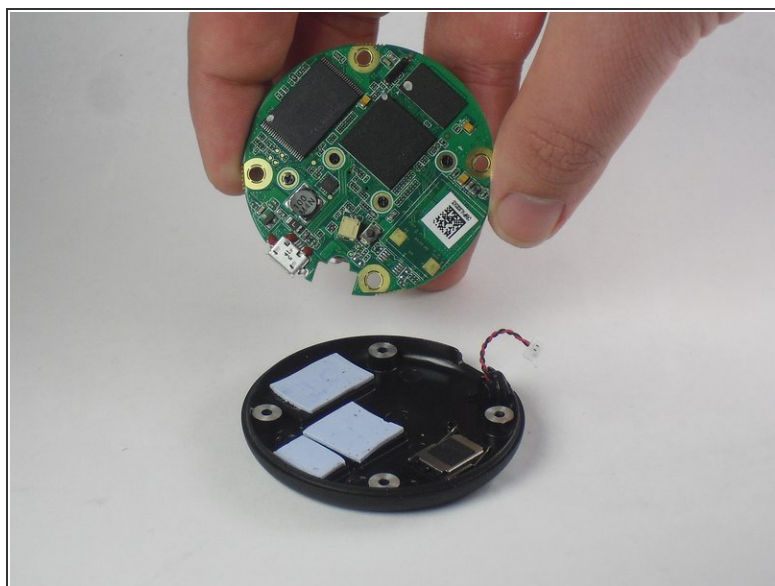
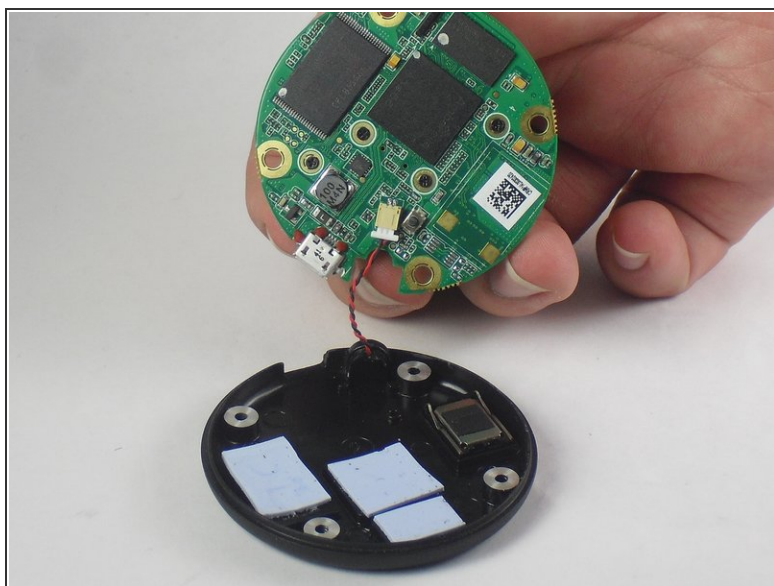
- Lift the front of the case slowly, as there is an antenna cable attached to the motherboard.
- Carefully disconnect the antenna cable from the motherboard. You will feel this cable "pop" out of place when disconnected.

### Step 4 — Motherboard



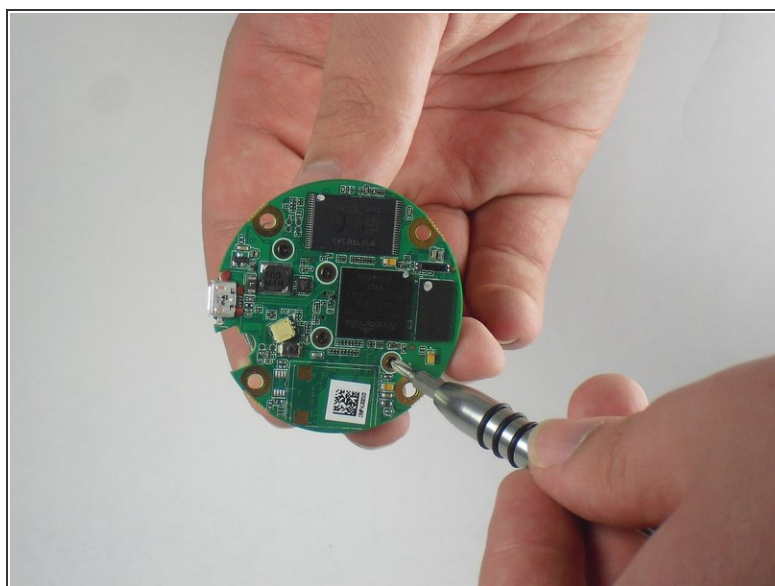
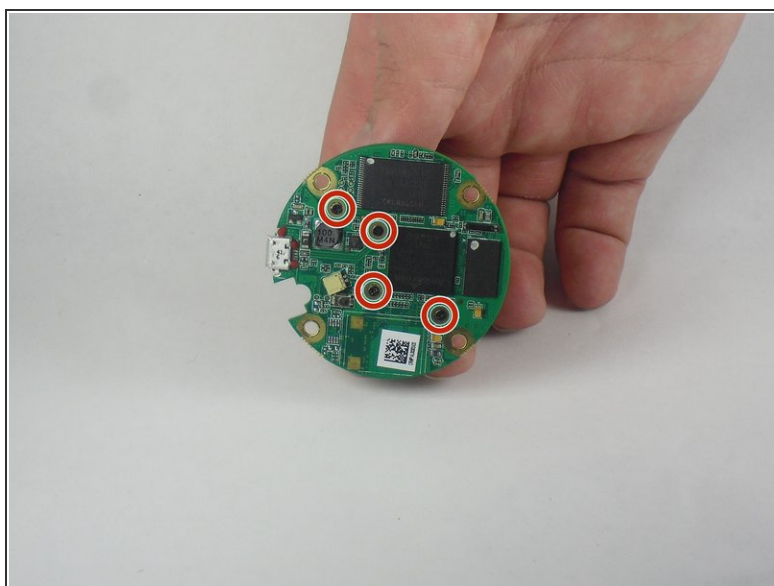
- Insert a spudger tool under the micro-USB port and lift to separate the motherboard from the back case.

## Step 5



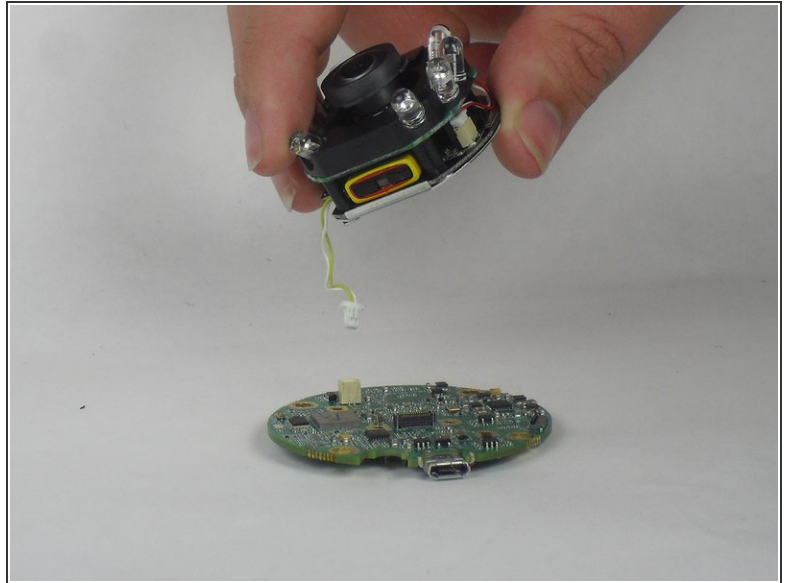
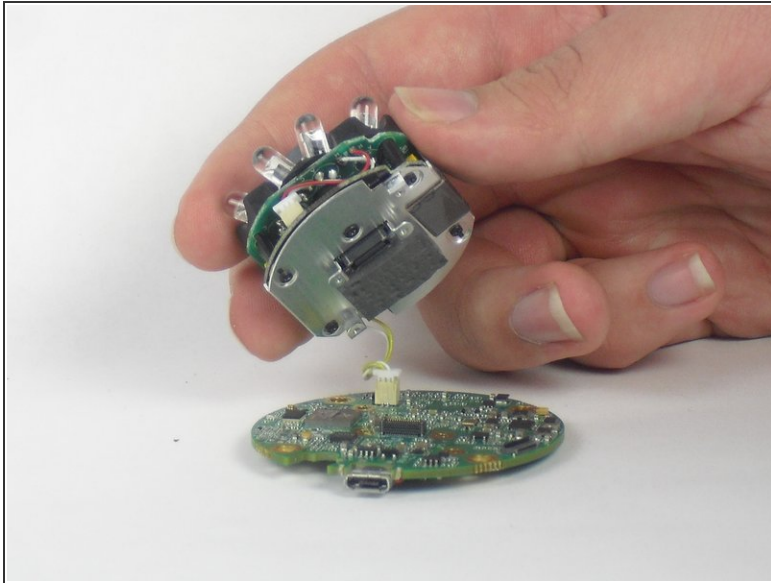
- Pull the motherboard away from the back case.
- Unplug the red and black cable connecting the motherboard to the back case.

## Step 6



- Using a Philips #0 screwdriver, remove the four 2 mm screws.

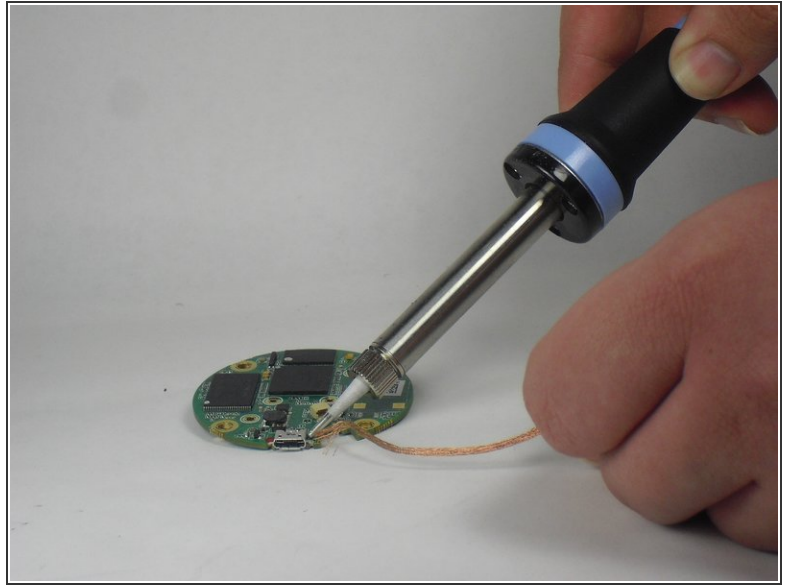
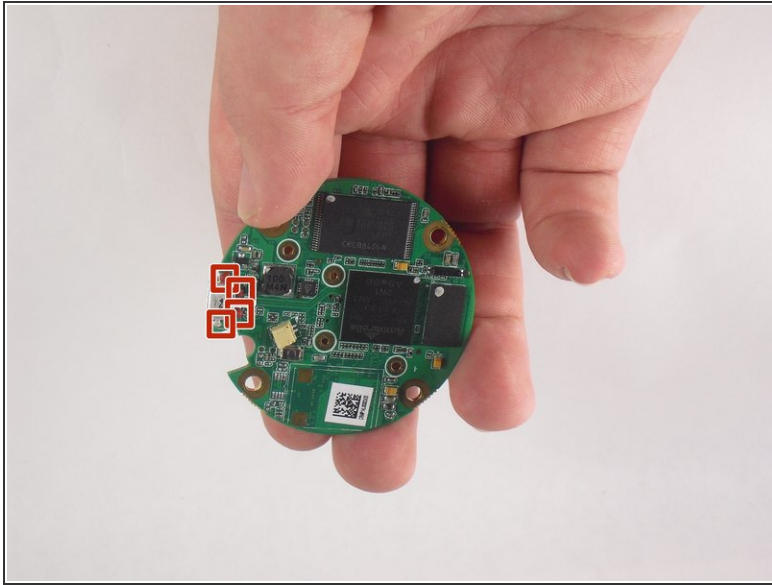
## Step 7



- Lift the lens and LED assembly away from the motherboard.
- Unplug the yellow and white cable from the motherboard.



## Step 8 — Micro-USB Port



- Using a soldering station and desoldering braid, desolder the four points surrounding the Micro-USB port.
- Lift the Micro-USB port away from the motherboard.

To reassemble your device, follow these instructions in reverse order.