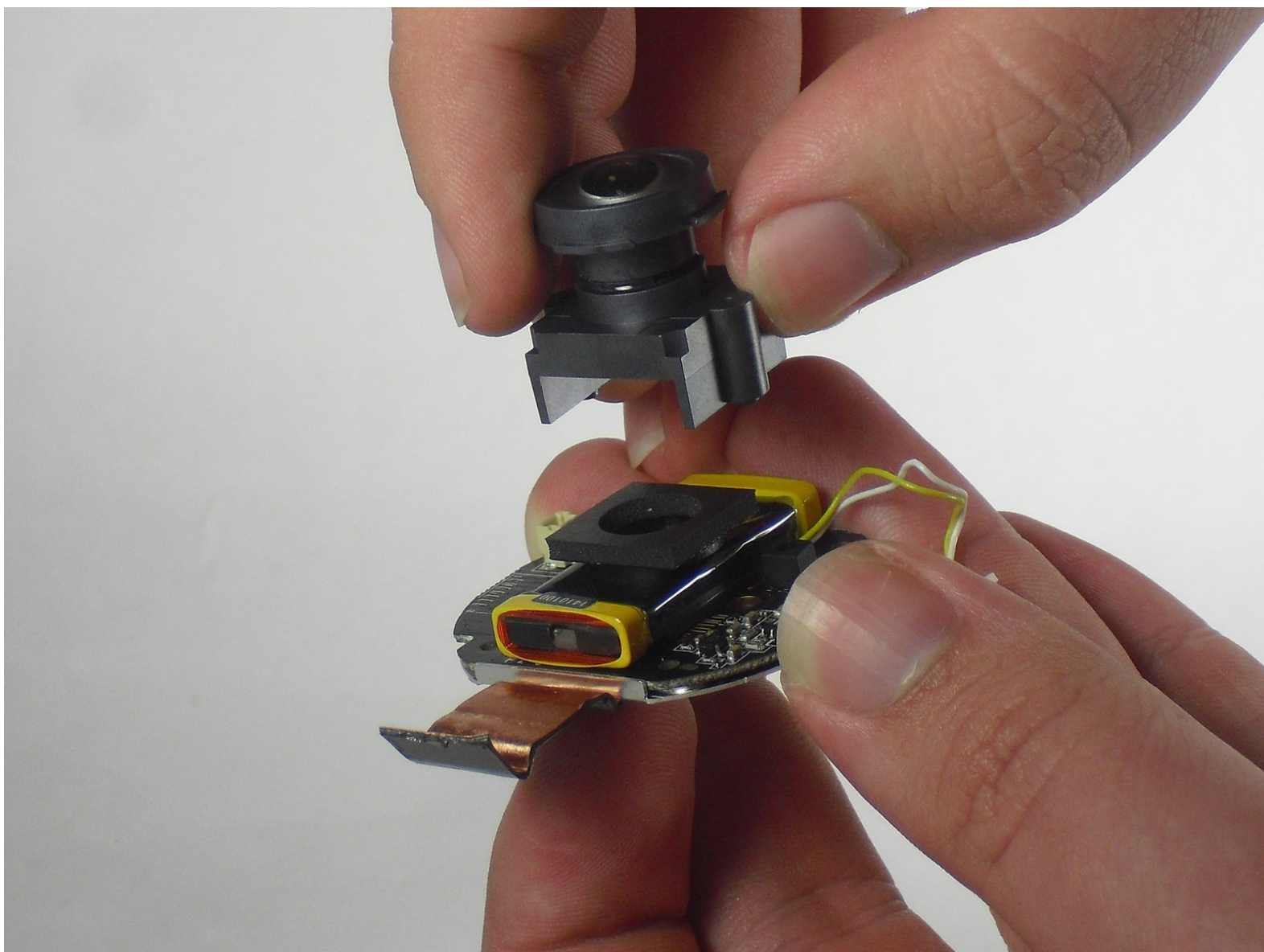




Nest Dropcam Pro Camera Lens Replacement

Replace the camera lens to your Nest Dropcam Pro when the video received from the device is distorted or blurred.

Written By: David Foens



INTRODUCTION

This guide is used to replace the camera lens of the Nest Dropcam Pro. Make sure the device is unplugged before opening.



TOOLS:

- [Phillips #0 Screwdriver](#) (1)
 - [Spudger](#) (1)
-

Step 1 — Outer Case



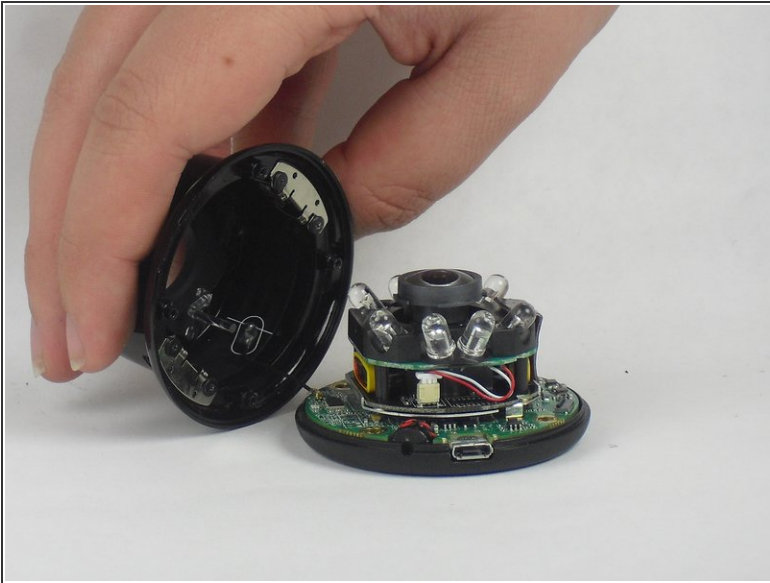
- Press in the mounting clips on each side of the case to remove the camera from the mount.

Step 2



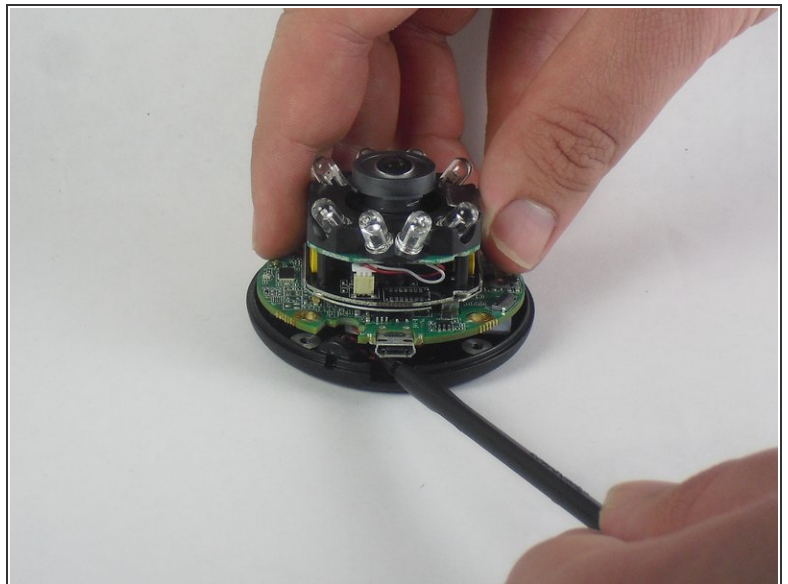
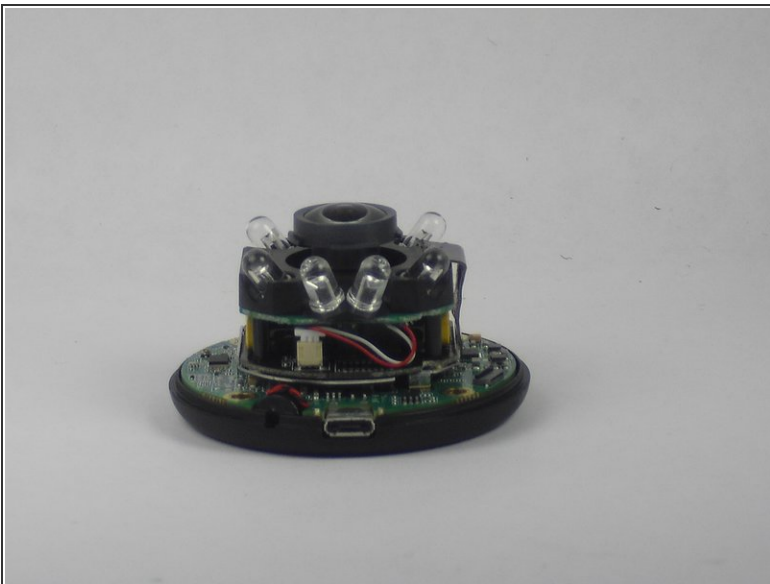
- Using a Philips #0 screwdriver, remove the four 3 mm screws.

Step 3



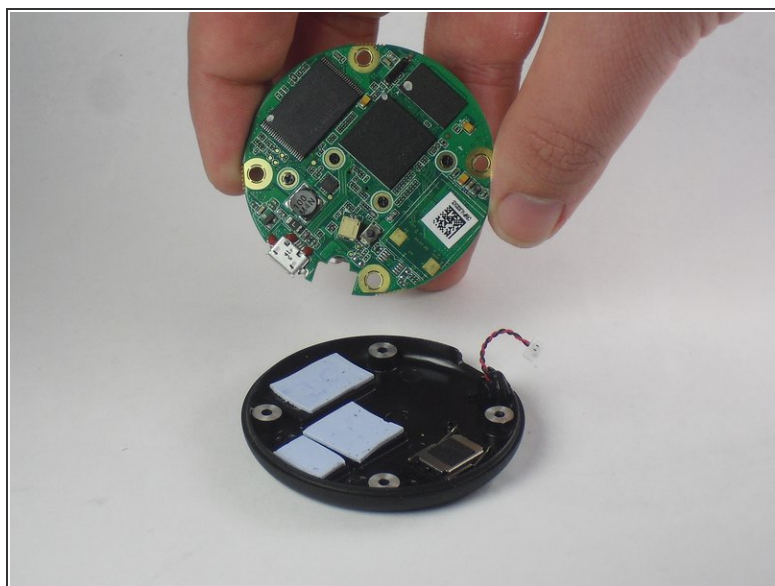
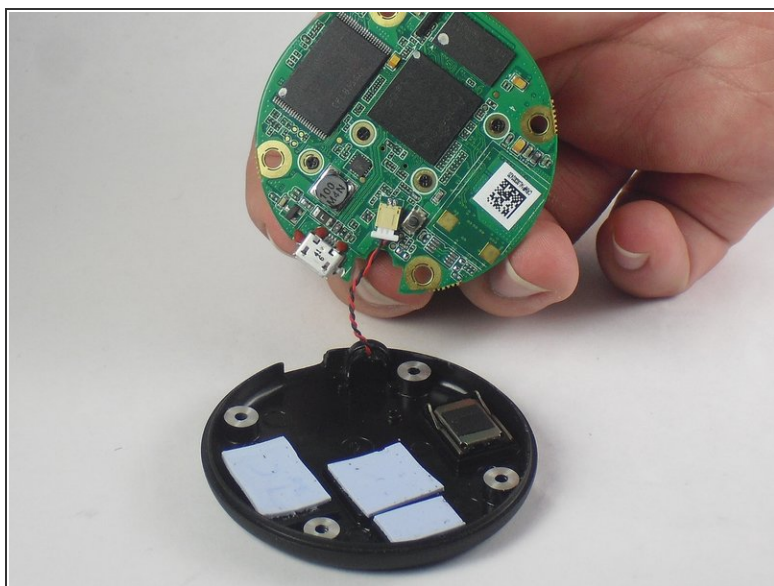
- Lift the front of the case slowly, as there is an antenna cable attached to the motherboard.
- Carefully disconnect the antenna cable from the motherboard. You will feel this cable "pop" out of place when disconnected.

Step 4 — Motherboard



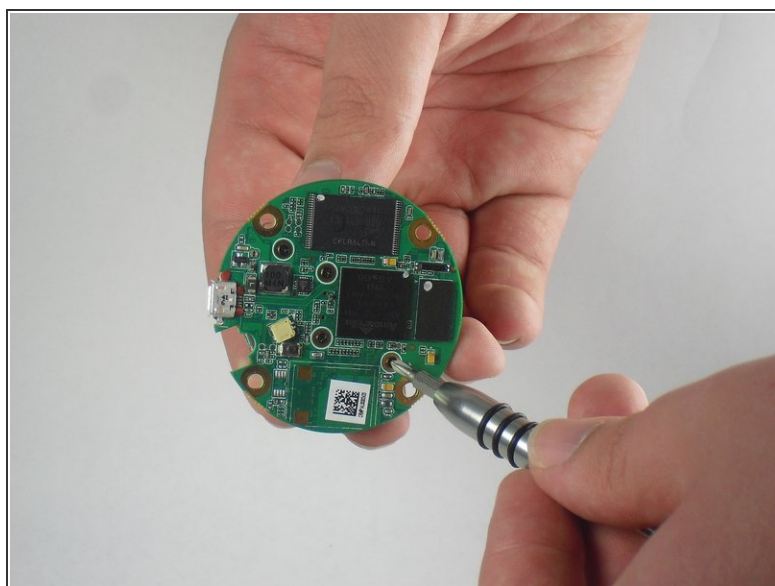
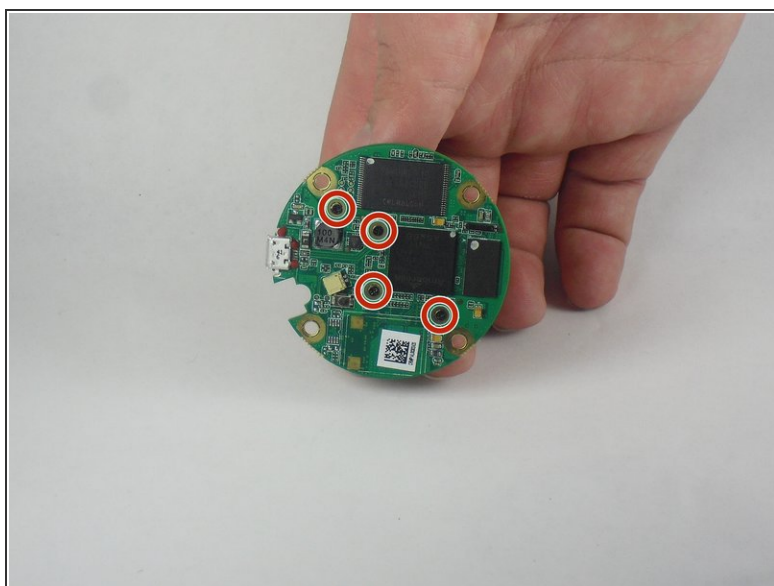
- Insert a spudger tool under the micro-USB port and lift to separate the motherboard from the back case.

Step 5



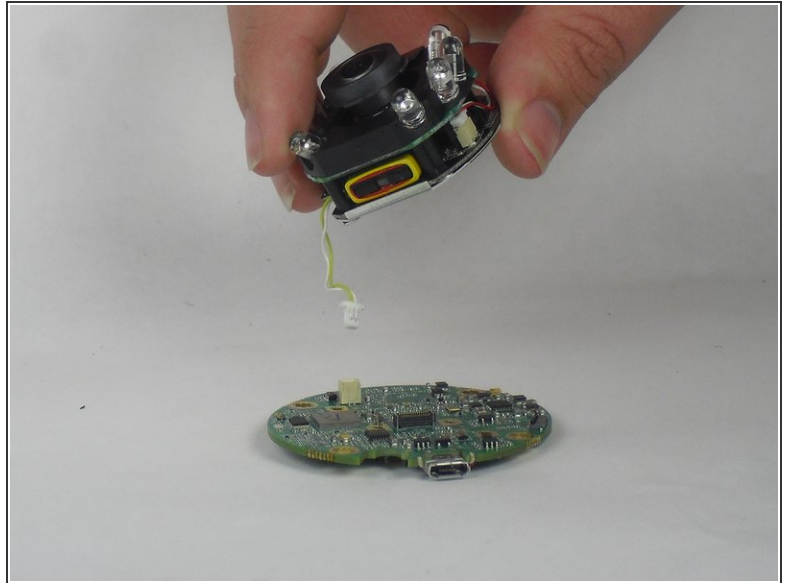
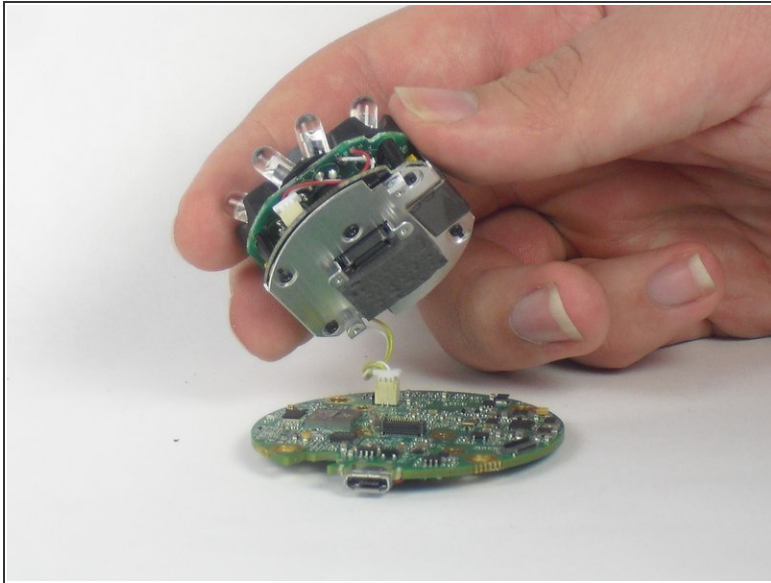
- Pull the motherboard away from the back case.
- Unplug the red and black cable connecting the motherboard to the back case.

Step 6



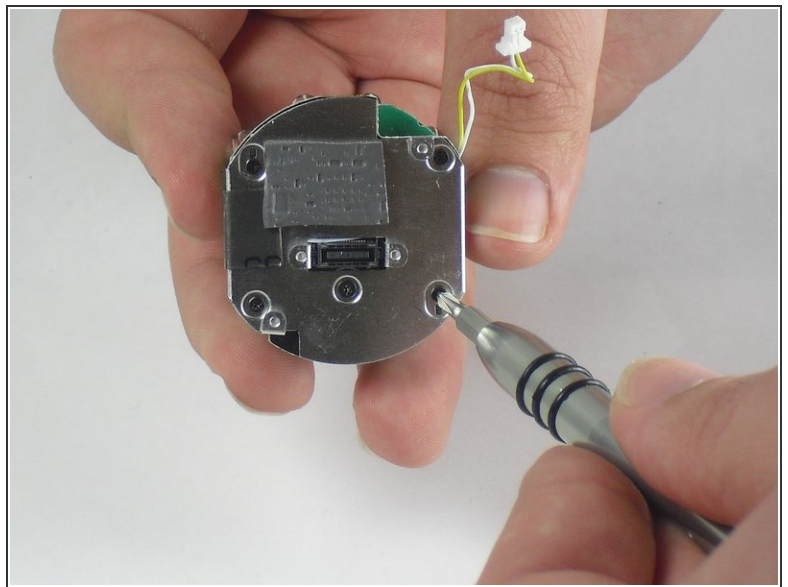
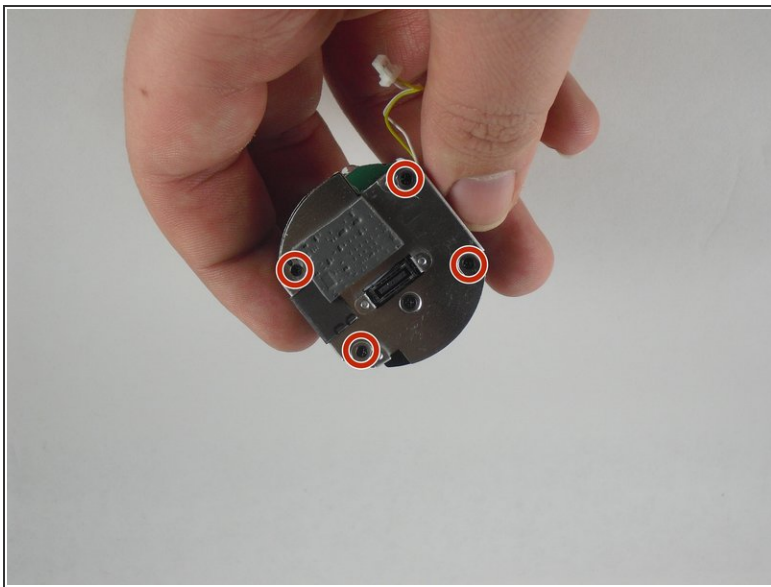
- Using a Philips #0 screwdriver, remove the four 2 mm screws.

Step 7



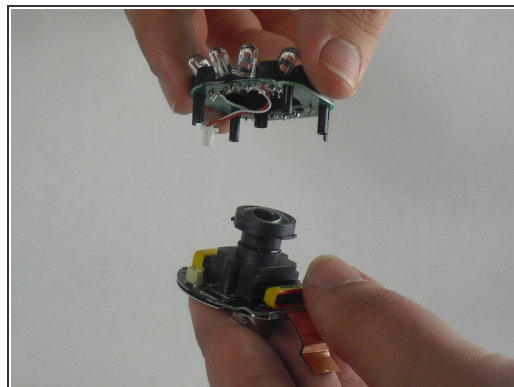
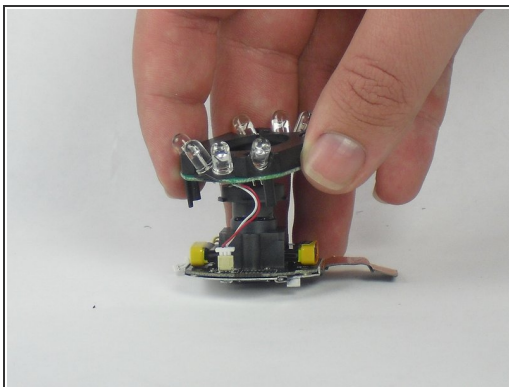
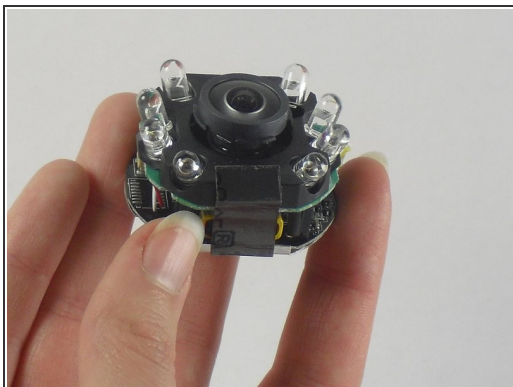
- Lift the lens and LED assembly away from the motherboard.
- Unplug the yellow and white cable from the motherboard.

Step 8 — Camera Lens



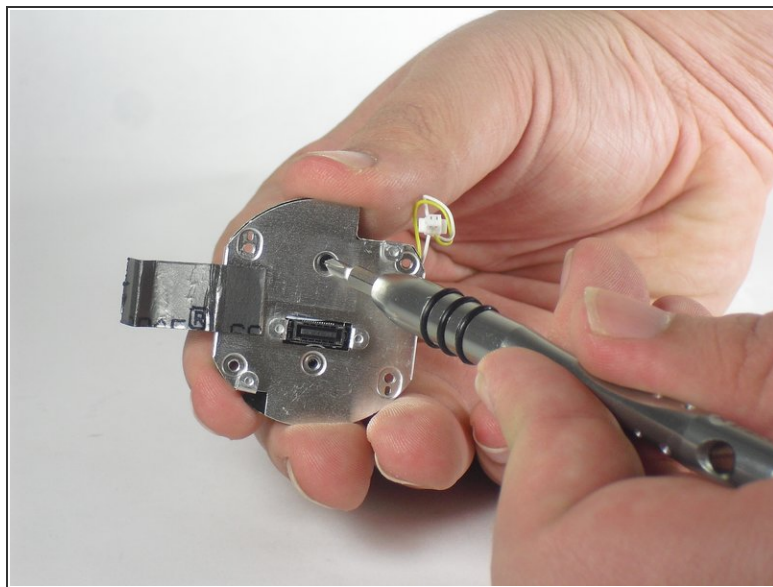
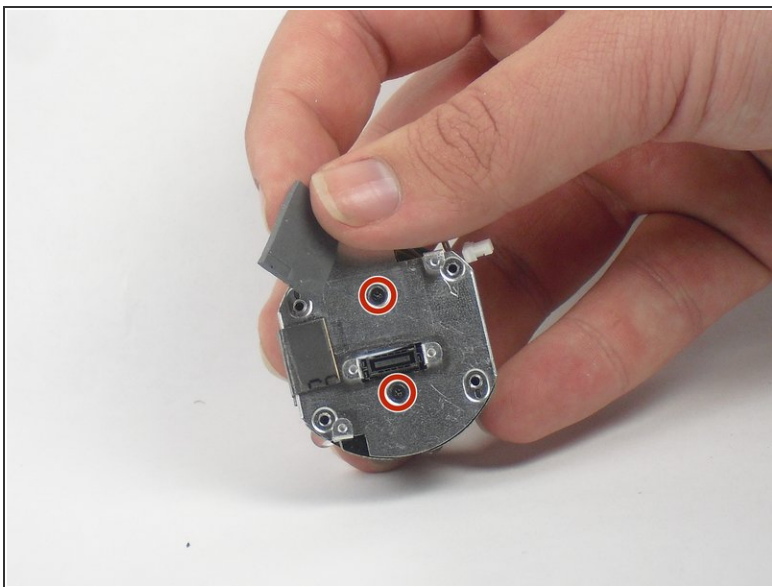
- Using a Philips #0 screwdriver, remove the four 2 mm screws.

Step 9



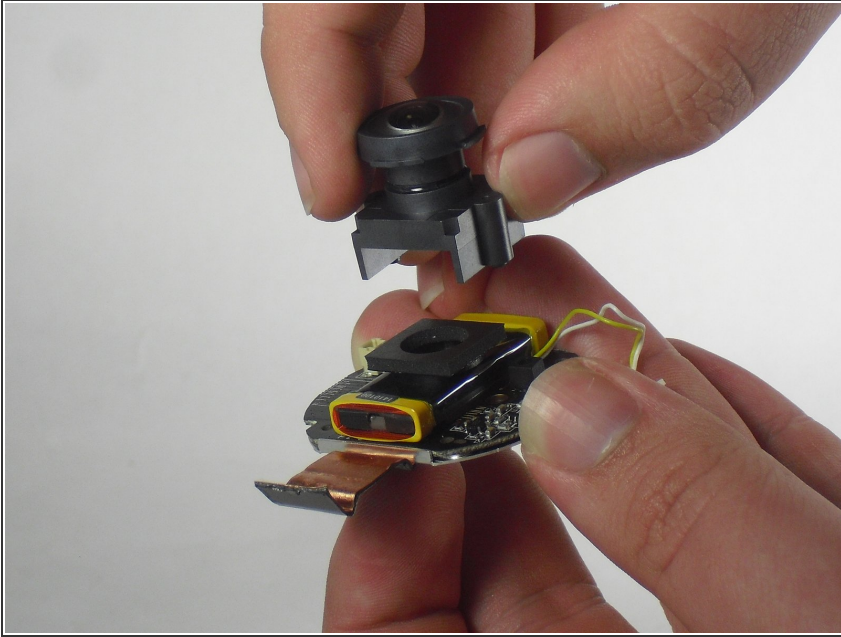
- Peel off the paper seal holding the Lens and LEDs together.
- Disconnect the red and white wire from the bottom board.

Step 10



- Lift up the foam cover to reveal a second screw underneath.
- Using a Philips #0 screwdriver, remove the two 3 mm screws.

Step 11



- With the screws gone, lift the camera lens away from the remaining components.

To reassemble your device, follow these instructions in reverse order.