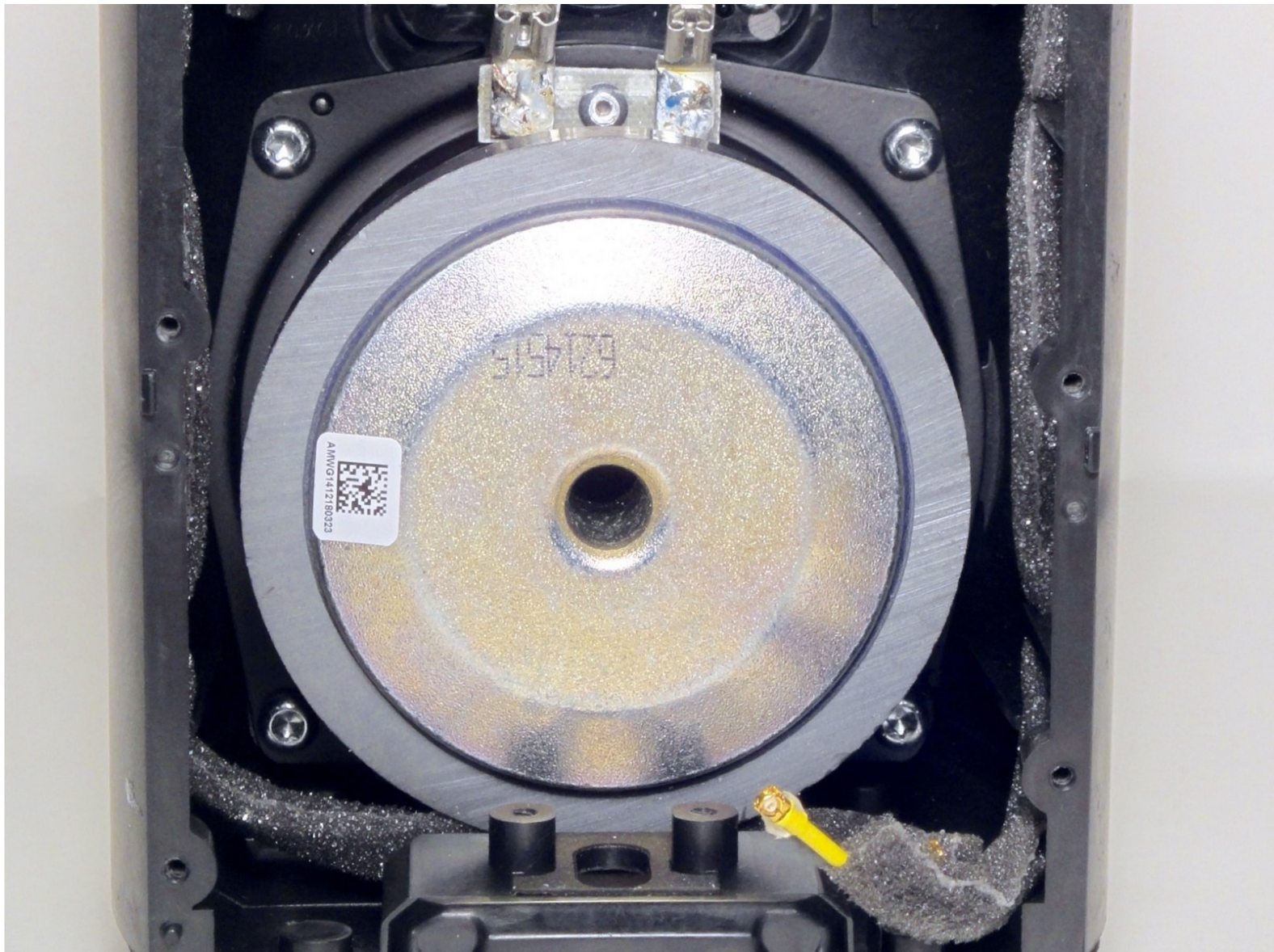




Sonos Play 1 Mid-Woofer speaker Replacement

This guide will show how to properly remove the mid-woofer from the device

Written By: Gregory Klein



INTRODUCTION

The mid-woofer ensures the faithful reproduction of mid-range frequencies crucial for accurate playback of vocals and instruments, while also delivering a deep, rich bass. If it ceases to function the audio out put of the device will be greatly inhibited. This guide gives a step by step procedure on how to dismantle and replace the mid-woofer speaker.



TOOLS:

- [Tweezers](#) (1)
- [Tweezers](#) (1)
- [Metal Spudger](#) (1)
- [iFixit Opening Tools](#) (1)
- [Spudger](#) (1)
- [64 Bit Driver Kit](#) (1)

Step 1 — Exterior Screen



- Remove the rubber footing from the bottom of the device. Pry it up from one end using one of the plastic opening tools.
- Once you pry open one end, use precision tweezers to remove rubber footing.

Step 2



- Using a metal spudger, pry open a corner of the adhesive tape.
- Use precision tweezers to remove the adhesive tape.

Step 3



- Remove the four 10 mm Torx security #10 screws that hold the base together.
- Remove the base by lifting it vertically away from the bulk of the device.

Step 4



- Remove the 10 mm Torx security #10 screw that holds down the exterior screen.
- Using precision tweezers, remove the metal bracket.

Step 5



- Remove the exterior screen by lifting it away from the bulk of the device.

Step 6 — Sonos Play 1 Top Cover Disassembly



- Remove the four 9 mm Torx Security #9 head screws. There are two on each side.

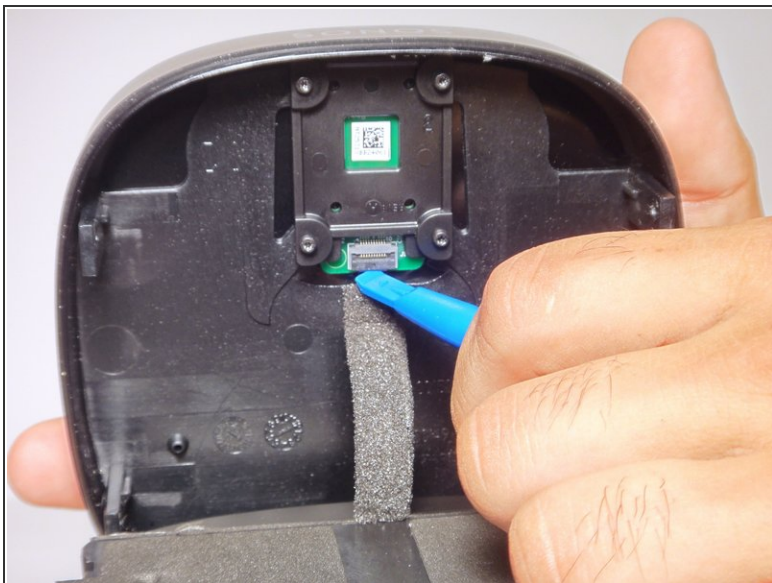
Step 7



- Using a plastic opening tool, pry open the top cap containing the power and volume button.
- Vertically remove the top cap.

⚠ Be sure to not jerk the top cap when removing , as to not damage the cable linking the switchboard to the motherboard.

Step 8



- Using a plastic opening tool, pry open the circuit flap.
- Once flap is loosened, use your hand to remove the circuit wire.

Step 9 — Disassembling Sonos Play 1 Rear Housing Cover



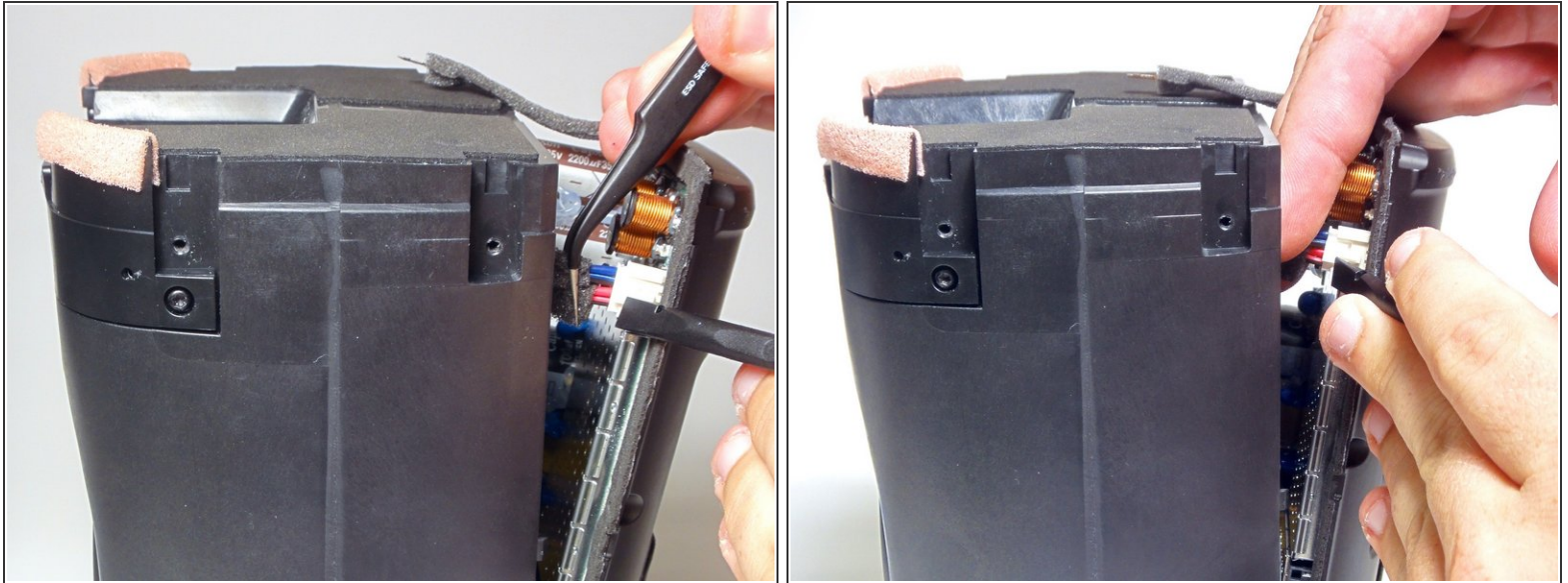
- Using a plastic opening tool, remove the grey tape from both sides of the device.

Step 10



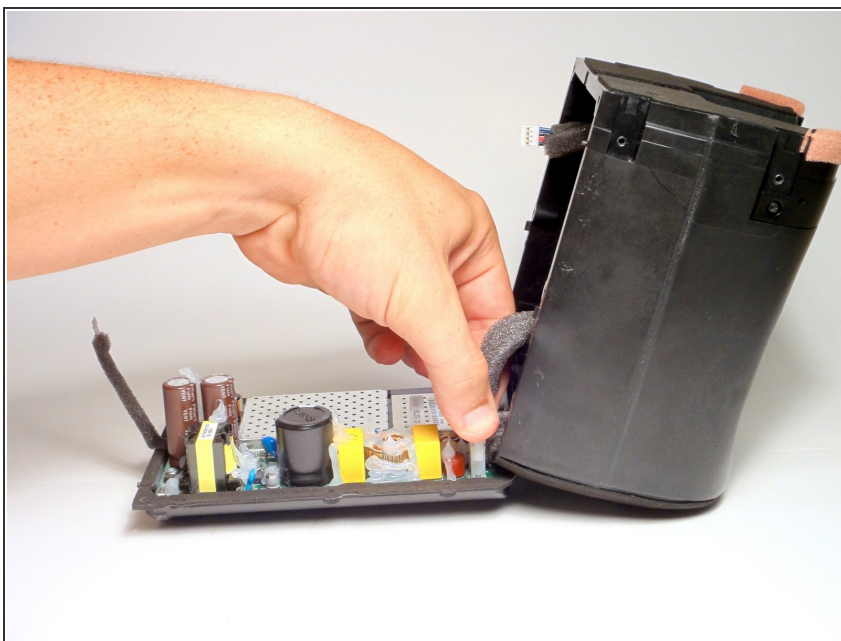
- Remove the six 9 mm Torx #9 screws.
 - Using a plastic opening tool, detach the rear housing cover from the housing.
- ⚠ Try not to jerk the rear housing cover, as its wires are still connected to delicate electronics.

Step 11



- Using tweezers, grip the connector fixed to the motherboard's audio cable.
- While pulling on the connector, detach the cable by pressing the connectors release.

Step 12



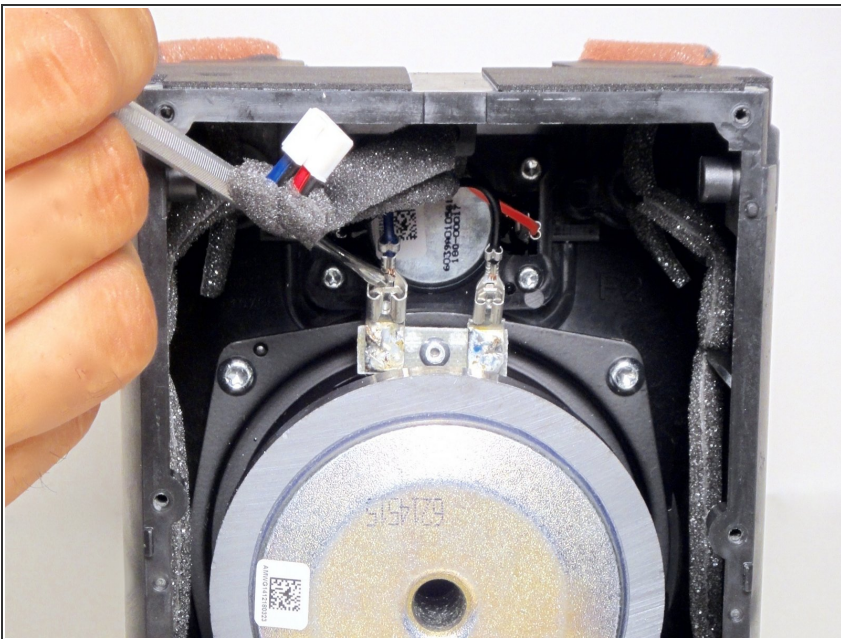
- Using your fingers, grip the connector fixed to the motherboard's power cable and detach it.
- You will now be able to remove the rear housing cover.

Step 13 — Mid-Woofer speaker



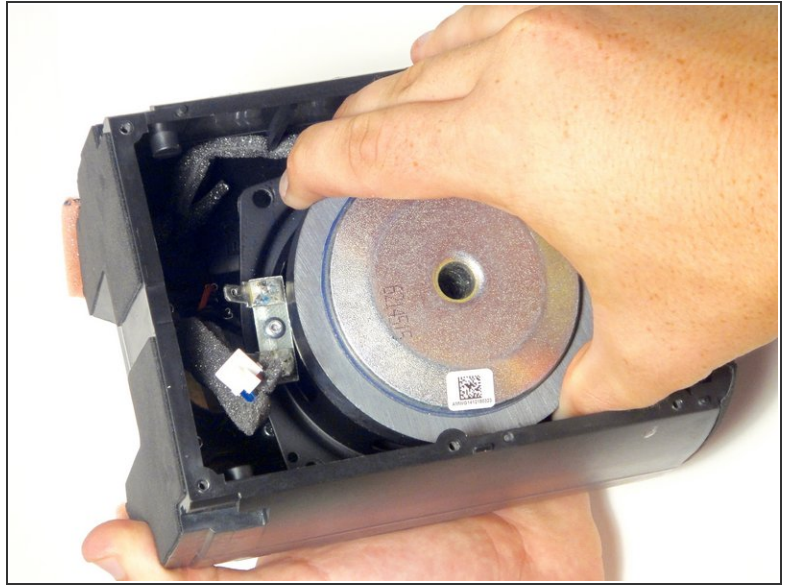
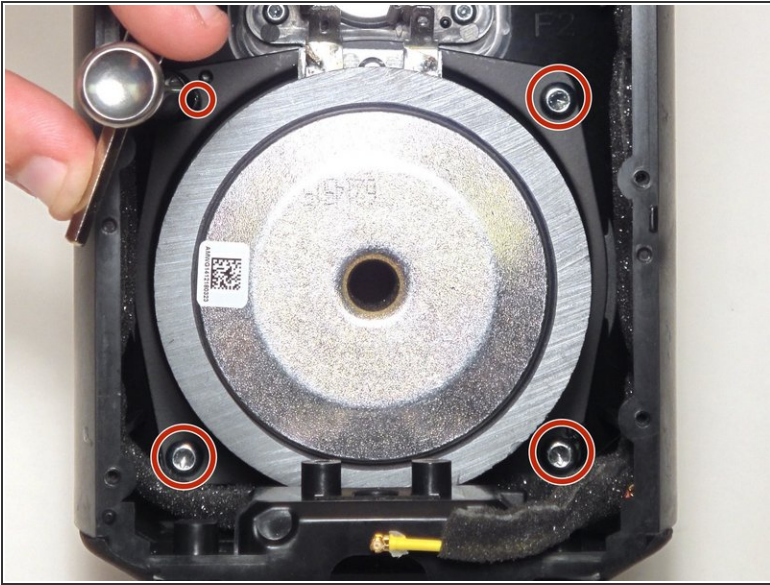
- Remove the two 9mm Torx #9 screws fastening the power cable to the housing.
- Remove the power cable.

Step 14



- Using a metal spudger, press the release located in the center of the connector .
- While pressing the release pull on the connector detaching it from the speaker.
- Do this for both connections.

Step 15



- Using the Torx T20 bit remove the four 13 mm screws fastening the speaker to the housing.
- Remove the speaker by lifting it up towards the top of the housing and out at an angle.

To reassemble your device, follow these instructions in reverse order.