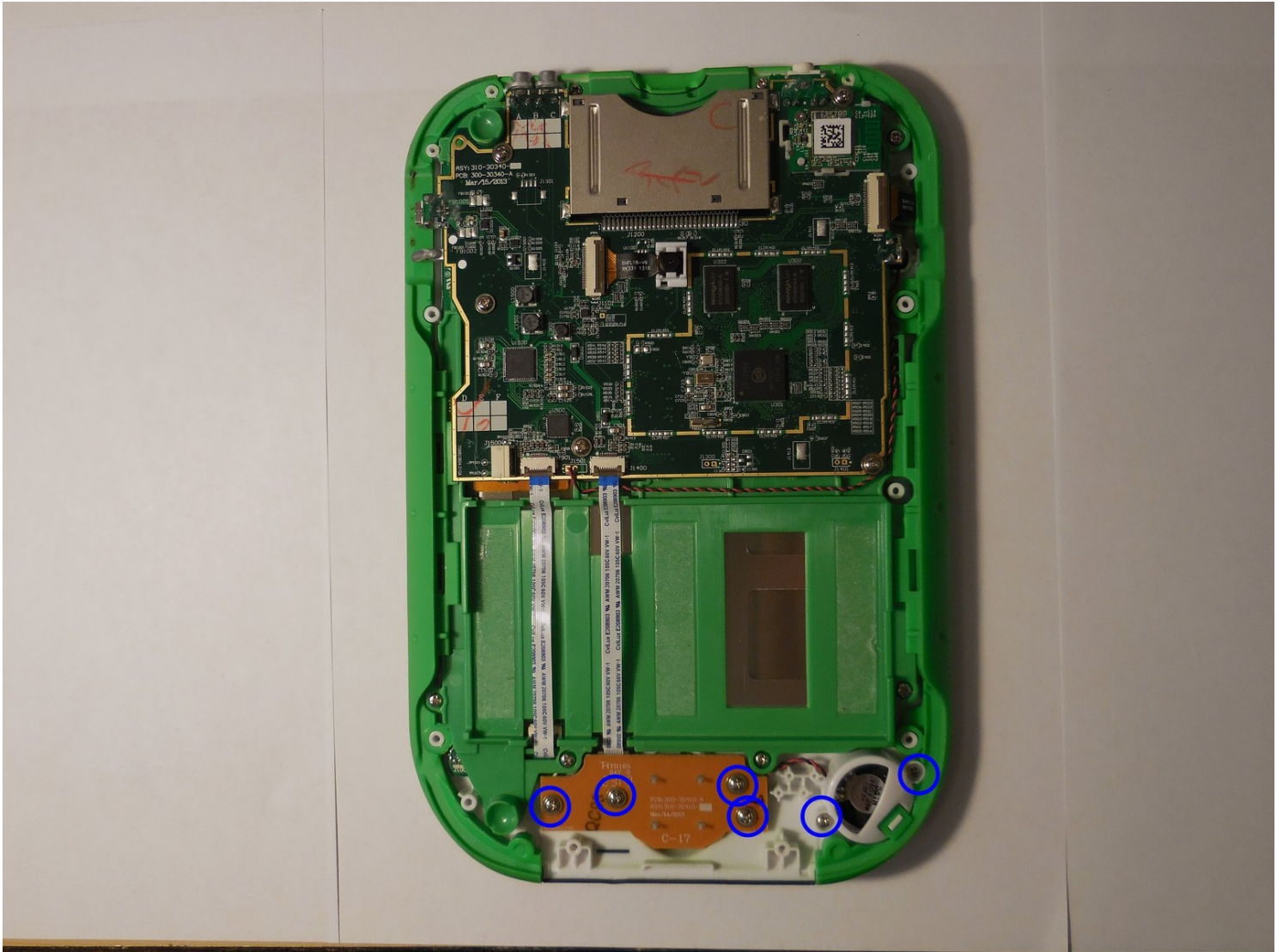




LeapFrog LeapPad Ultra Repair Speaker Replacement

The purpose of this guide is to show how to...

Written By: Carlos Ortiz



INTRODUCTION

The purpose of this guide is to show how to replace a damaged speaker with one that is working so that the LeapPad functions properly. However, it is still possible to still use the LeapPad without a working speaker. For this guide take extra caution to not damage any of the internal components for they can be very fragile (i.e. ribbon cables.)

TOOLS:

[iFixit Opening Tool](#) (1)

[Spudger](#) (1)

[64 Bit Driver Kit](#) (1)

Step 1 — Battery



- Remove the barcode covering the two screws on the lower back of the Leap Pad.

Step 2



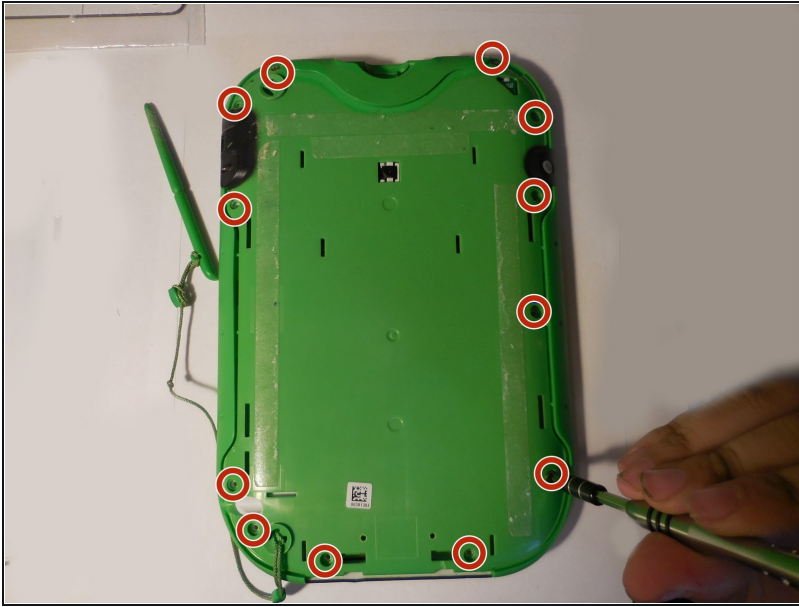
- Remove the two 5 mm screws that were covered by the sticker.

Step 3



- Using a plastic opening tool, pry off the outer protective child proof casing, starting from the bottom.

Step 4



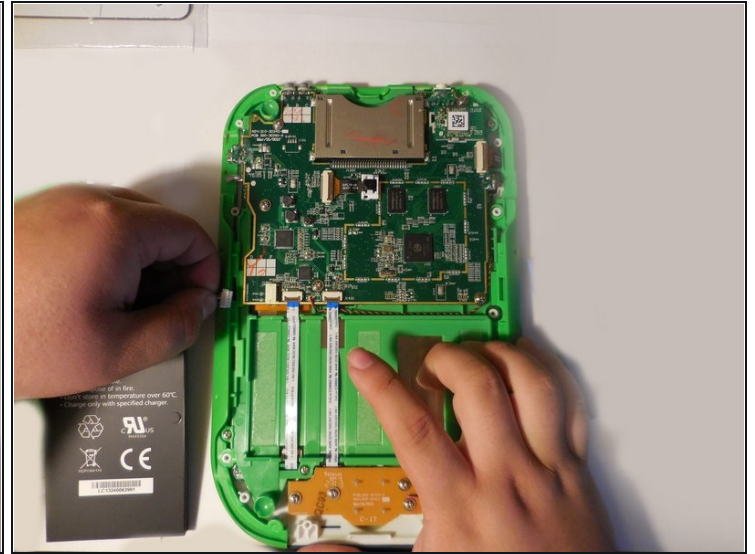
- Remove the 7 mm screw to the right of the cartridge dock, two 8 mm screws in the top left, and the nine 8 mm screws holding the the green shell.

Step 5



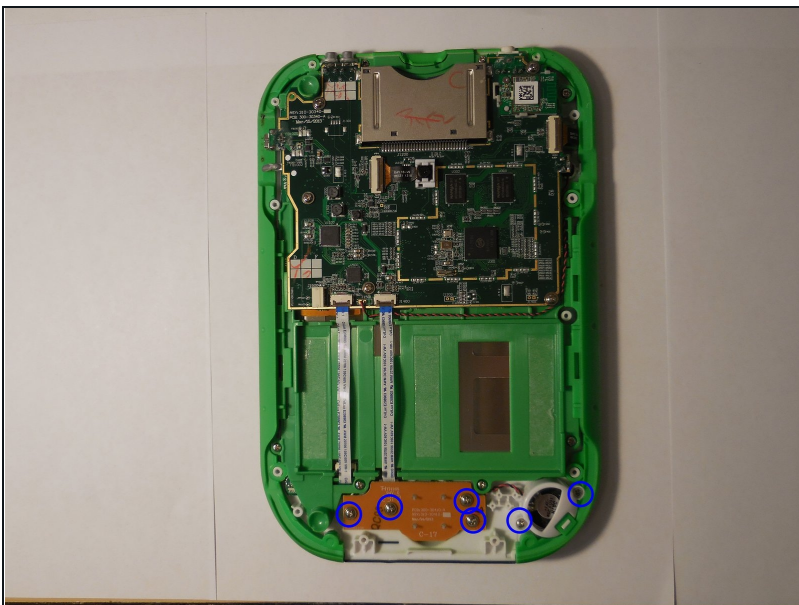
- Remove the hard plastic casing, exposing the motherboard and battery.

Step 6



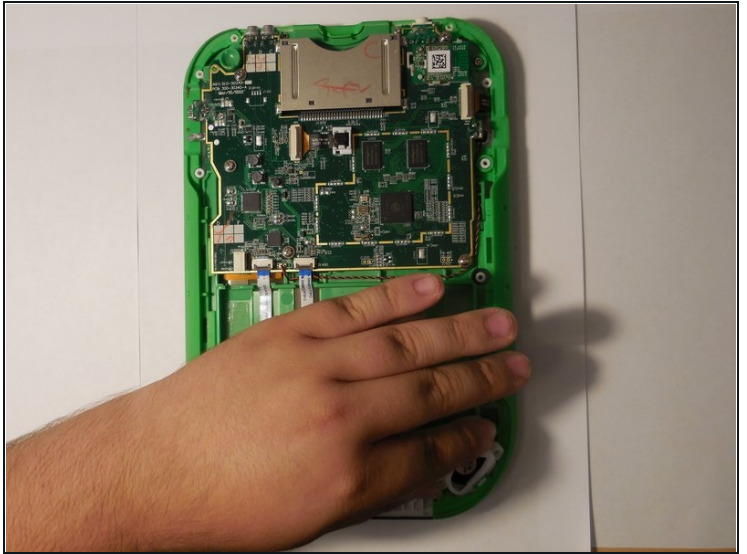
- Disconnect the battery using tweezers or your fingernails.
 - The battery is glued down, if available put some isopropyl alcohol around the edges of the battery to soften the glue.
 - Gently pry off the battery loose using a spudger or another thin prying tool.
- ⚠ Be careful, damaging/puncturing the battery may cause an explosion.

Step 7 — Speaker



- Find the screws on the bottom of the device holding down the button and speakers board.

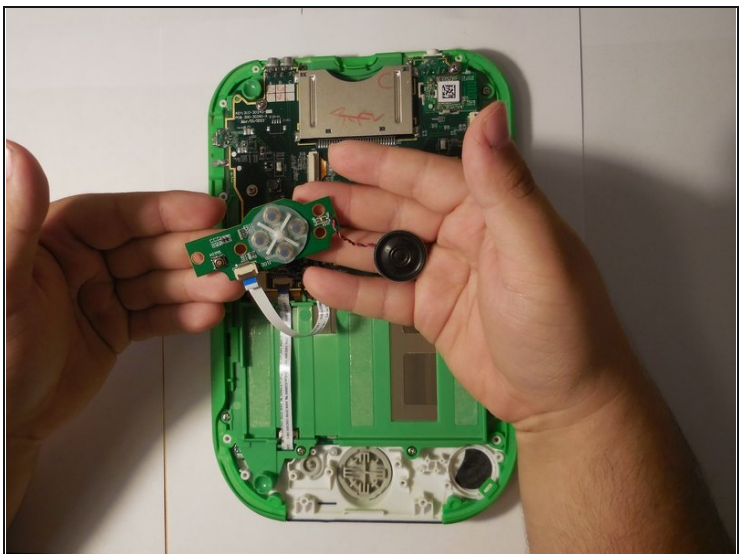
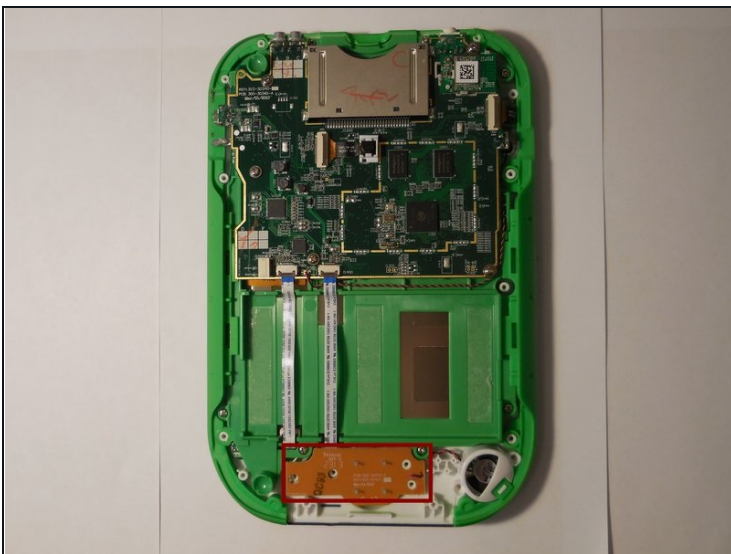
Step 8



- There should be a plastic covering over the speaker, carefully pull on the opposite side from the plastic clip holding it in place.

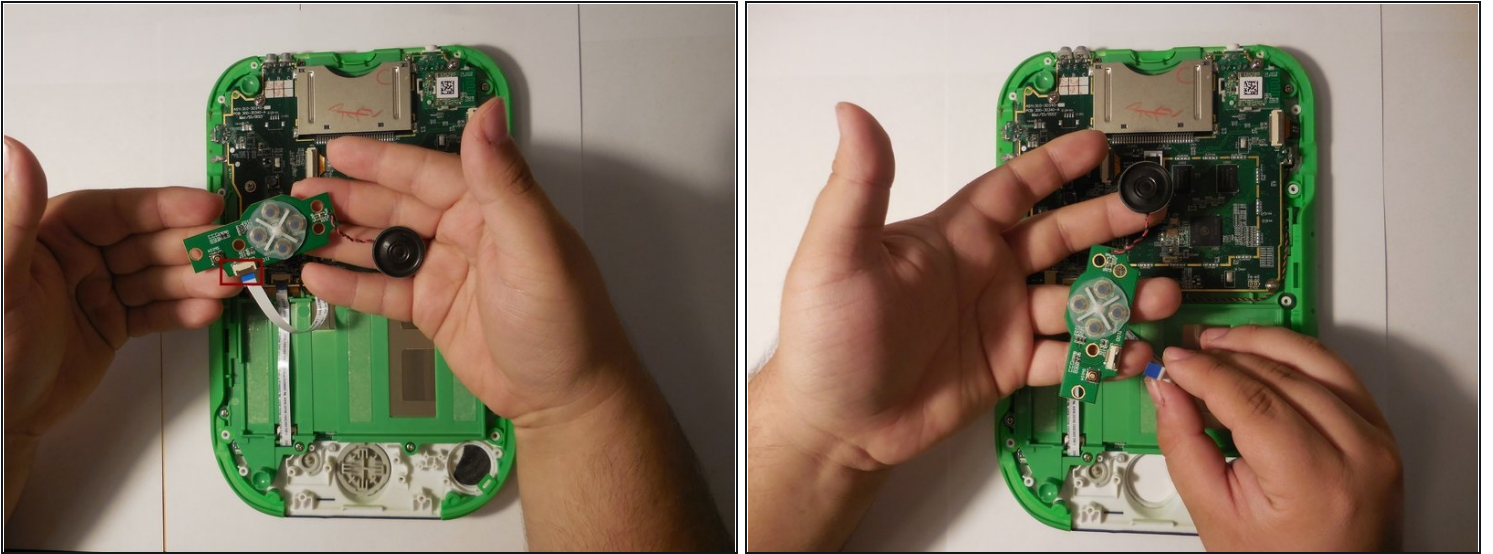
⚠ Excessive force can break the plastic clip, only use enough for to remove it gently

Step 9



- Lift the button and speaker board, and turn it over, revealing the other side of the board.

Step 10



- Find the ribbon cable connection and with a small plastic tool flip the plastic holding it down up.
- You can now safely remove the ribbon cable by gently pulling it out of the slot.

⚠ Trying to remove the cable with brute force will damage the cable.

To reassemble your device, follow these instructions in reverse order.