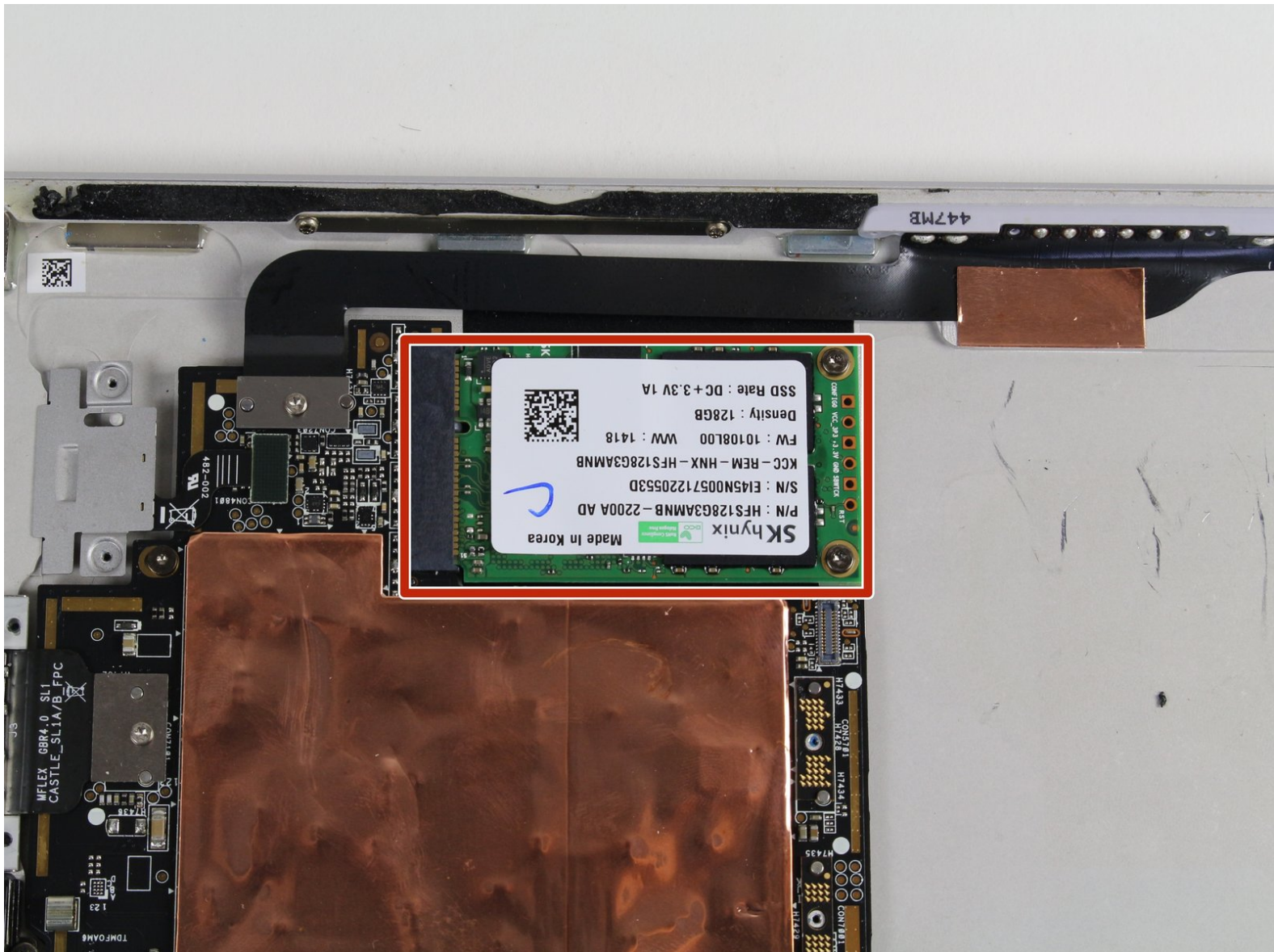




Microsoft Surface Pro 3 SSD Replacement

Follow this step by step guide to replace the SSD in your Surface Pro 3.

Written By: Erik Snyder



INTRODUCTION

This guide will teach you how to safely remove your SSD from you Surface Pro 3. The guide starts by removing the screen and digitizer and then goes right into removing the SSD. This guide does not include details on how to clone the existing memory on your current SSD onto your new one.



TOOLS:

- [T4 Torx Screwdriver](#) (1)
- [iFixit Opening Picks set of 6](#) (1)
- [Plastic Cards](#) (1)
- [Spudger](#) (1)
- [T3 Torx Screwdriver](#) (1)
- [T5 Torx Screwdriver](#) (1)
- [Tweezers](#) (1)
- [iOpener Kit](#) (1)






PARTS:

- [Surface Pro 3 Adhesive Strips](#) (1)

Step 1 — Display



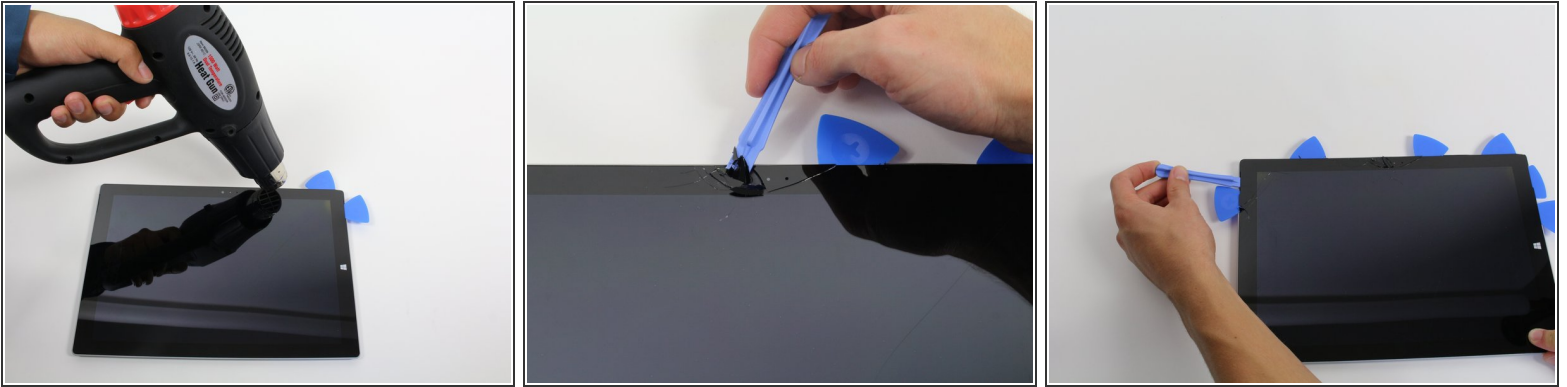
-  Before you begin, discharge the Surface Pro's battery below 25%. A charged lithium-ion battery can catch fire and/or explode if accidentally damaged during the repair.
-  The display is strongly glued to the frame of the device.
 - To remove the display, first soften the adhesive by applying heat. You can use a heat pad, heat gun, or iOpener. In a pinch, a hair dryer can also work.
 -  Be careful when using a heat gun, as too much heat can permanently damage the display and/or battery.
 - Steadily and evenly heat the perimeter of the display until it's too hot to touch, and try to maintain that temperature for several minutes.

Step 2




- Use a suction cup or an iSclack to pull up on the glass and create a slight gap between the glass and the metal frame.
 - ⓘ If your display is badly cracked, a suction cup may not adhere. It may help to first cover the display with a layer of packing tape. Alternatively, you can superglue your suction cup to the display.
 - Carefully insert an opening pick into the gap between the screen and the device to cut the adhesive.
 - Slide the pick around the sides and bottom of the display to cut the adhesive. Apply more heat as needed.
- ⚠ Work carefully—the glass is thin and will crack easily if you try to force it.
- ⚠ The wi-fi antennas are glued under the screen border along the top edge (on either side of the camera), and can be damaged easily. Use extra care when separating the top edge, and apply more heat if necessary.

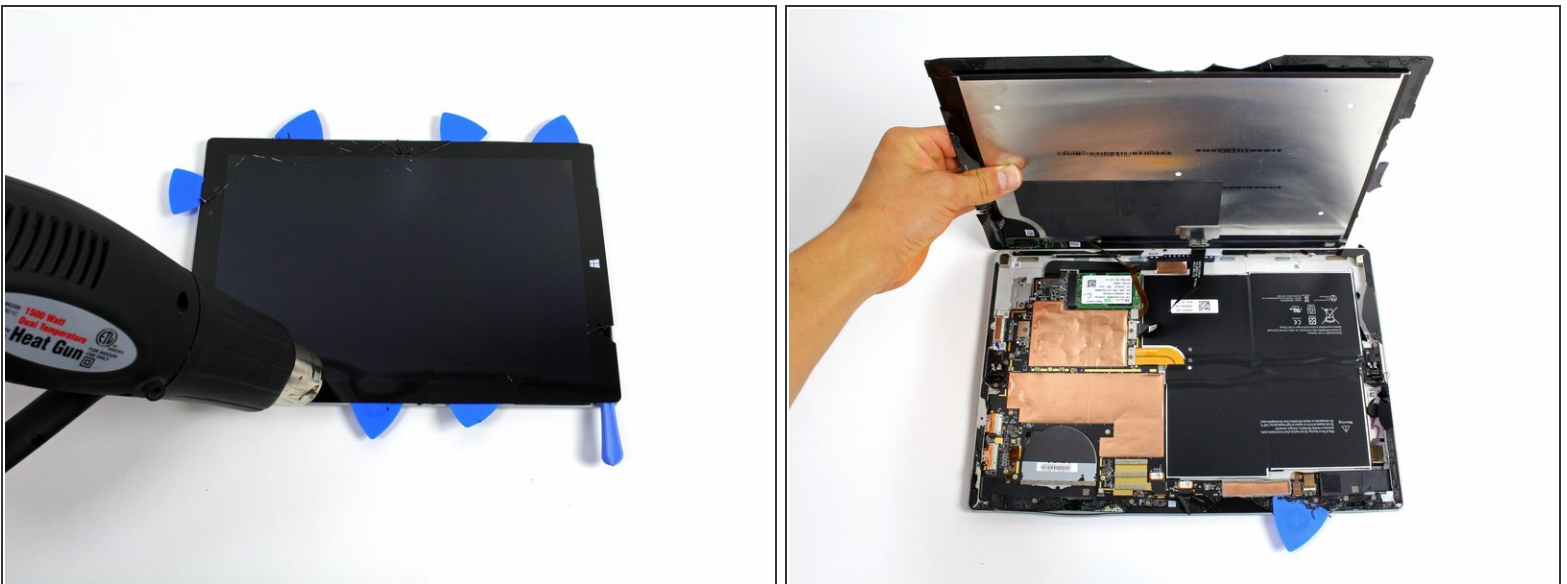
Step 3



- Continue to heat sections of the screen with the heat gun.
- As you make your way around the screen with the heat gun, use the plastic opening tool and the opening picks to pry the screen loose.

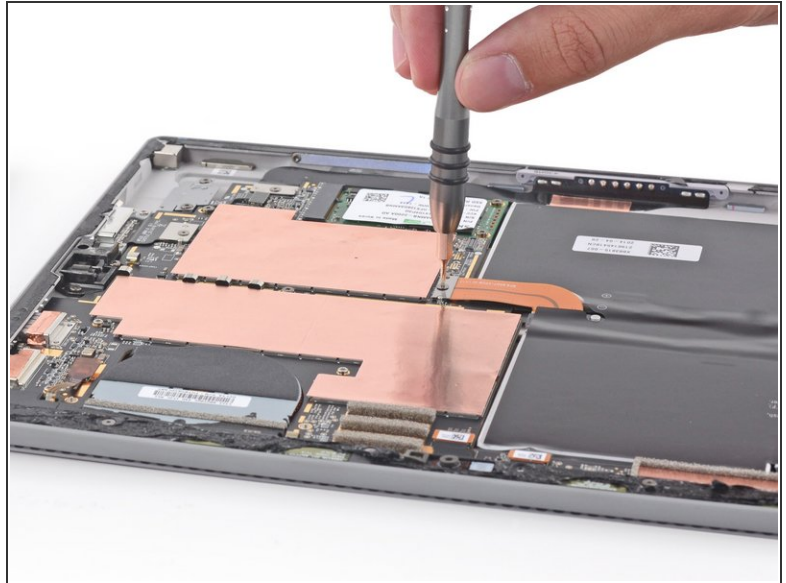
 The screen is extremely thin and very easy to break. Be careful working with broken glass.

Step 4



- Lift the screen up carefully so that no wires are torn.

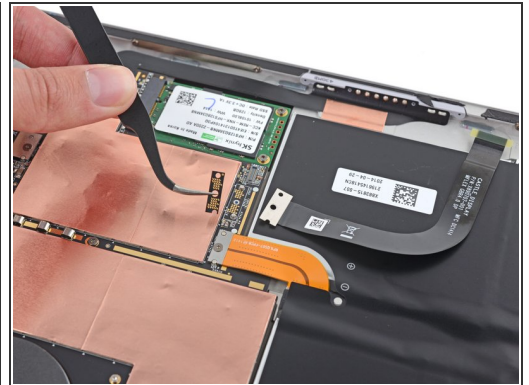
Step 5



- Remove the 3 mm T3 Torx screw securing the battery connector, and disconnect the battery connector.

⚠ Be careful not lose the small, rectangular bridge connector that lies underneath.

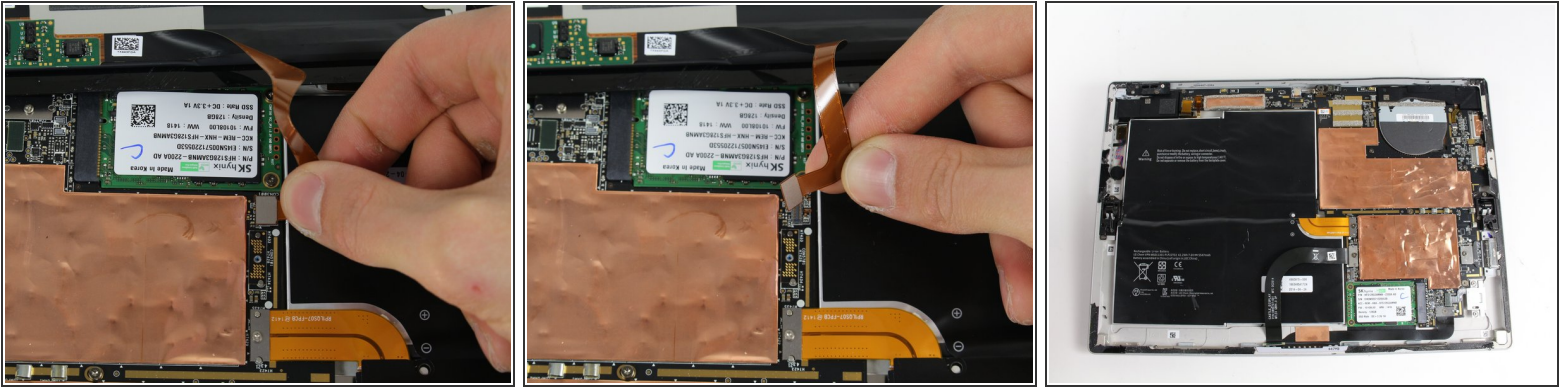
Step 6



- Remove the single 4 mm T3 Torx screw securing the display cable.
- Lift the connector to disconnect the cable.

⚠ Be careful not lose the small, rectangular bridge connector that lies underneath.

Step 7



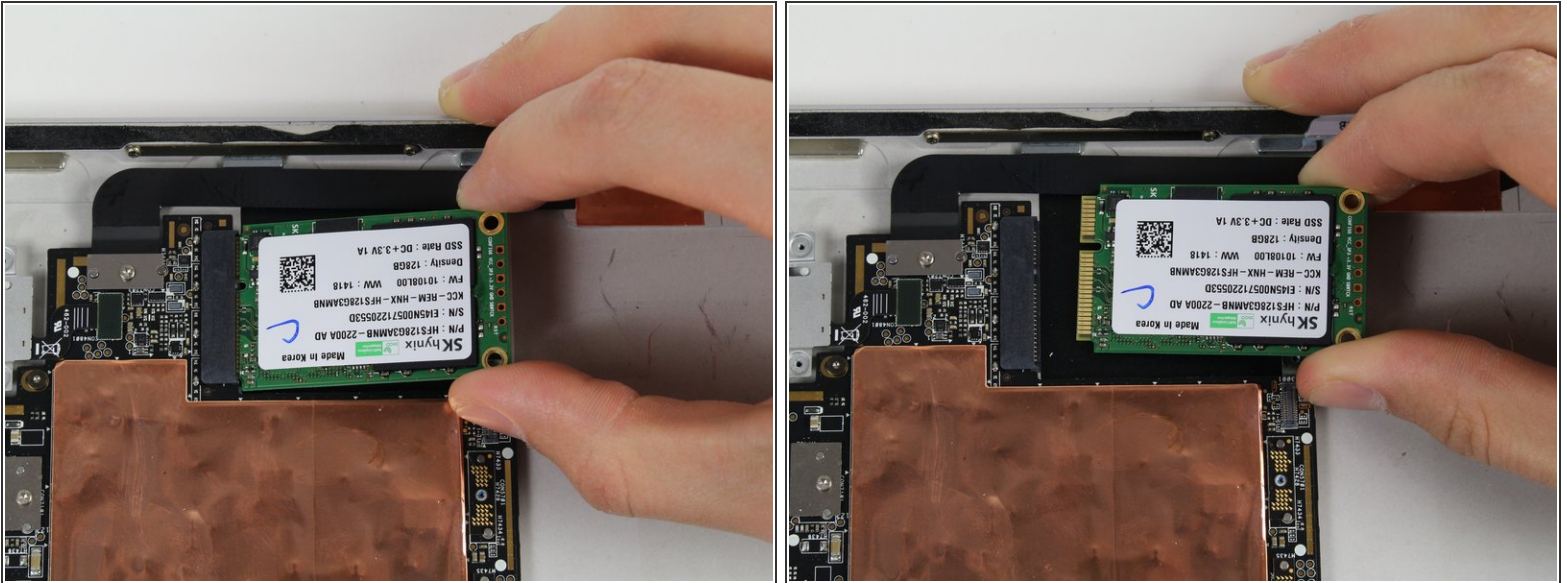
- Grasp the orange cable connected to the silver connector.
 - Carefully lift the orange cable up until the connector pops off.
 - The screen will now be completely disconnected.
- ☒ The replacement display may not include all the parts needed for installation. Save all the parts from the original display, and transfer them to the new display as needed.

Step 8 — SSD



- Remove the two 4 mm T3 Torx screws securing the SSD.

Step 9



- Lift up and pull gently on the SSD to remove it from the black connector.

To reassemble your device, follow these instructions in reverse order.