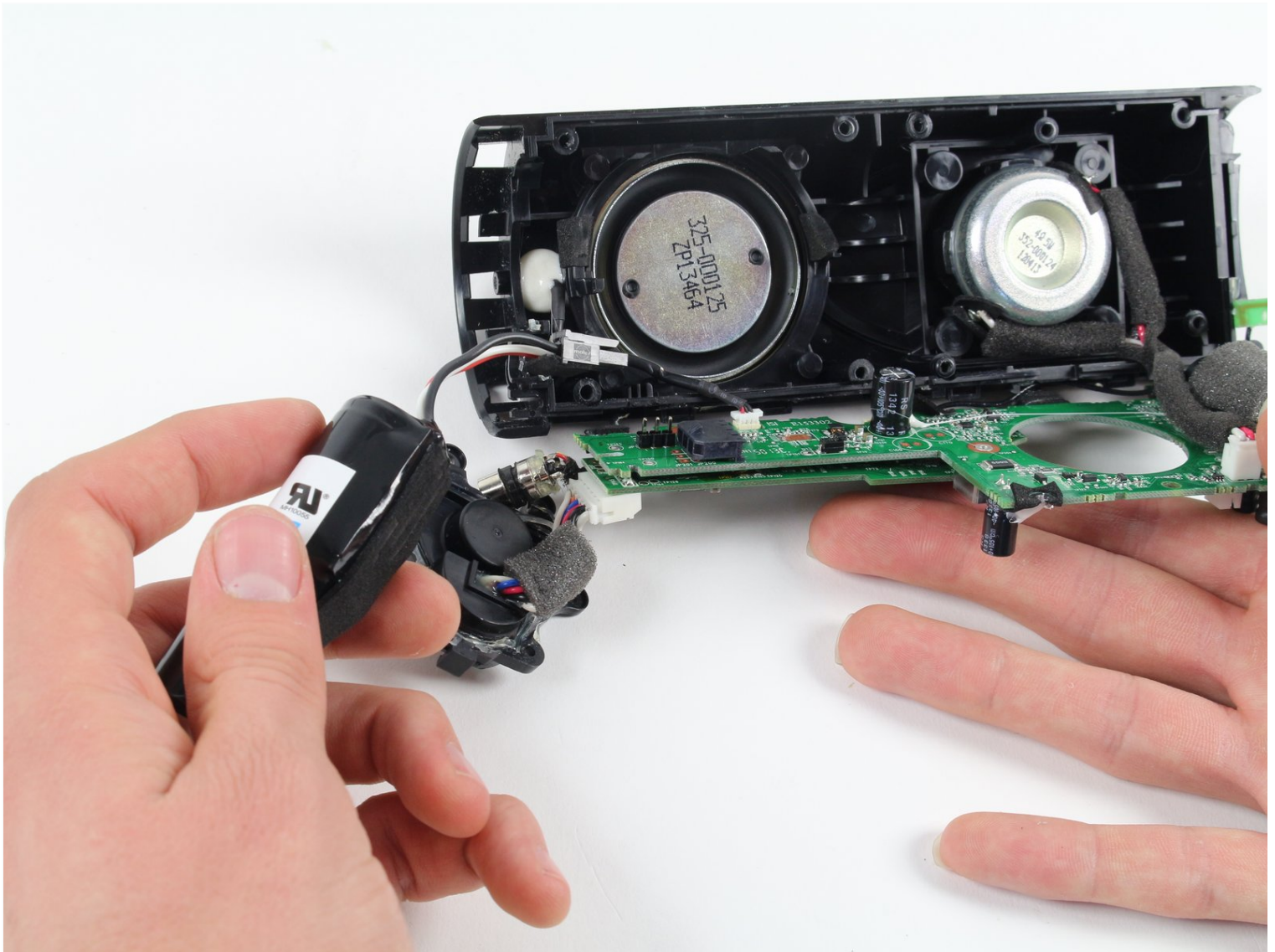




# Logitech UE Boom Speaker Replacement

This guide will show will allow you to see step...

Written By: Andrew Pifferini



# INTRODUCTION

This guide will show will allow you to see step by step how to take apart your UE Boom in order to get inside and change your speakers.

## TOOLS:

[Metal Spudger](#) (1)

[Soldering Iron 60w Hakko 503F](#) (1)

[iFixit Opening Tool](#) (1)

[Mako Driver Kit - 64 Precision Bits](#) (1)

## Step 1 — D-ring



- Turn the device over. The D-ring will be on the left face of the speaker when viewing the device from this orientation.

## Step 2



- Lift the handle on the D-ring and unscrew it.
- Remove the D-ring.

## Step 3 — Bluetooth Adapter



**⚠ Any repairs made from this point forward will void your device's warranty.**

- Holding the speaker upright, wedge the metal spudger in between the casing and the speaker. Gently pry open the tabs as they are easily broken.



## Step 4



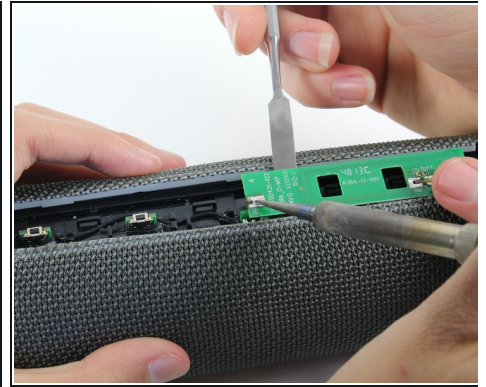
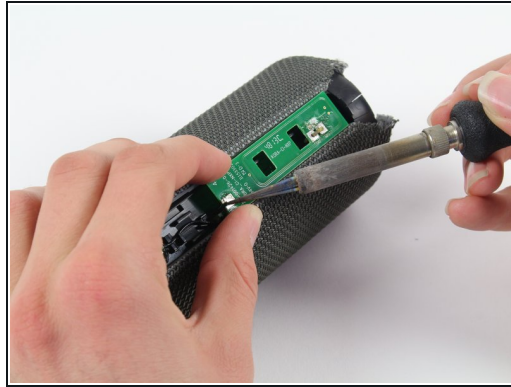
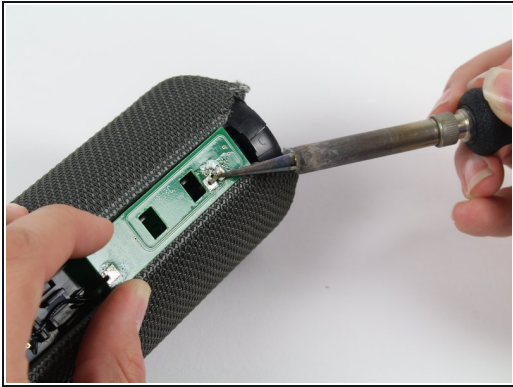
- Find the part of the casing that covers the volume controls. Wedge the metal spudger under this and pry open all of the tabs as in the previous step.
- Repeat for the bottom of the speaker and pry the casing open with your fingers.

## Step 5



- Using the Phillips J0 head screwdriver, unscrew the four silver 9 mm screws.
- Do the same for the two black 7 mm screws.

## Step 6



**⚠** This next step involves the use of a hot soldering iron. Remember to be careful during this step since it can be easy to burn yourself.

- Using a soldering iron, de-solder the two ends of the switch plate.

## Step 7



- With the switch plate disconnected, remove it and your device should now look like this.

## Step 8 — Lithium Battery



- With a metal spudger, pry open the tabs on the speaker sleeve along the length of the speaker.

## Step 9



- Use a plastic opening tool to pry the sleeve off from the bottom of the speaker.



## Step 10



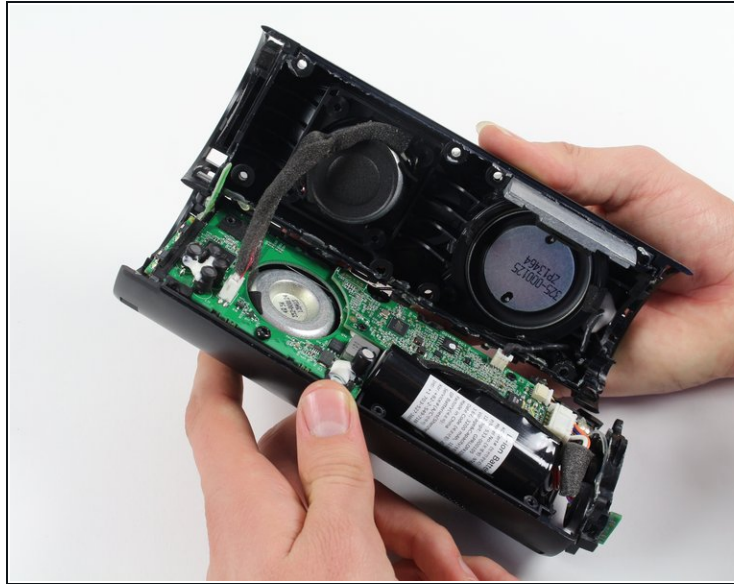
- Peel off the sleeve.

## Step 11



- Use a Phillips 1 screwdriver to unscrew the eight black 14 mm screws along the length of the casing.

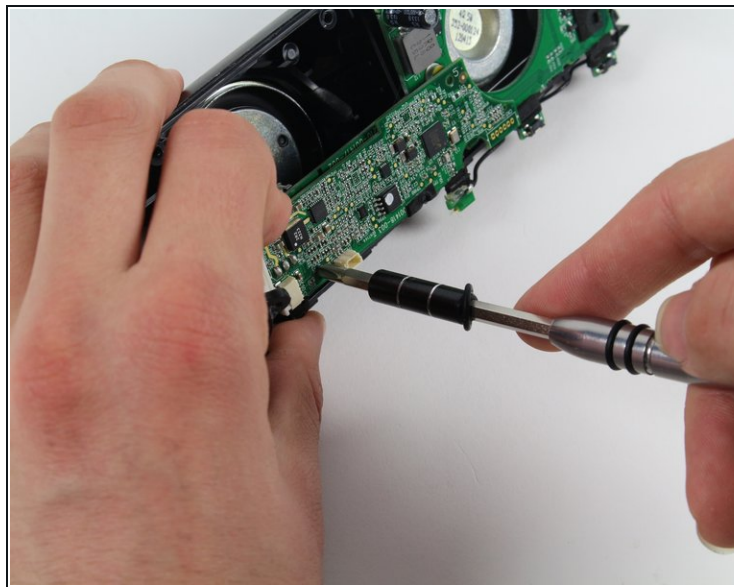
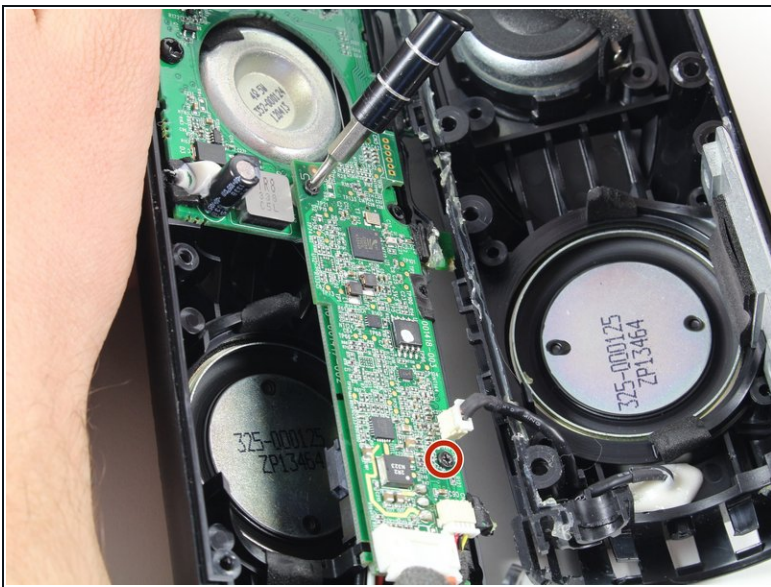
## Step 12



- With the screws removed, pry open the casing to be able to get to the components inside.

**i** Try prying the case open from one of the ends if that is easier.

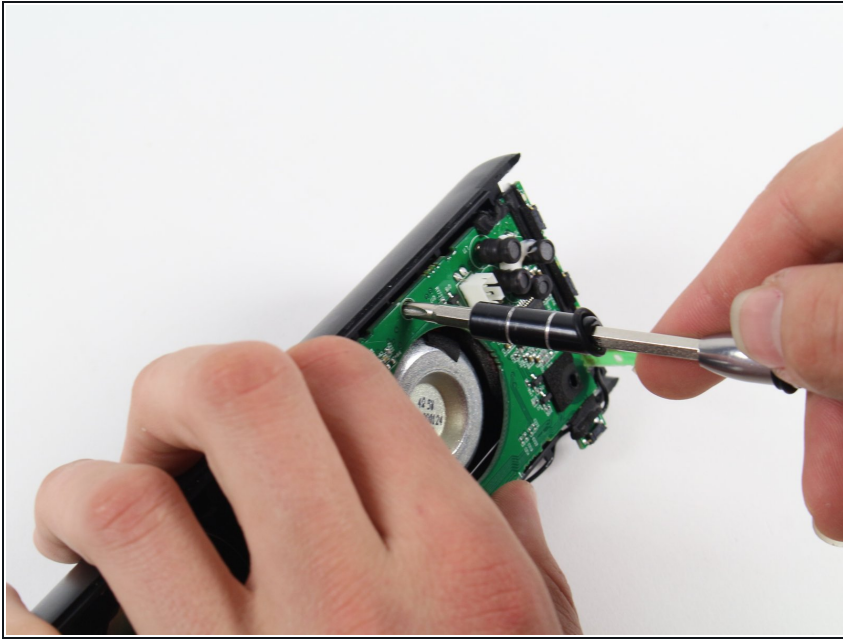
## Step 13



- With a Phillips #00 screwdriver, unscrew two 5.6 mm screws from the rectangular shaped circuit board.



## Step 14



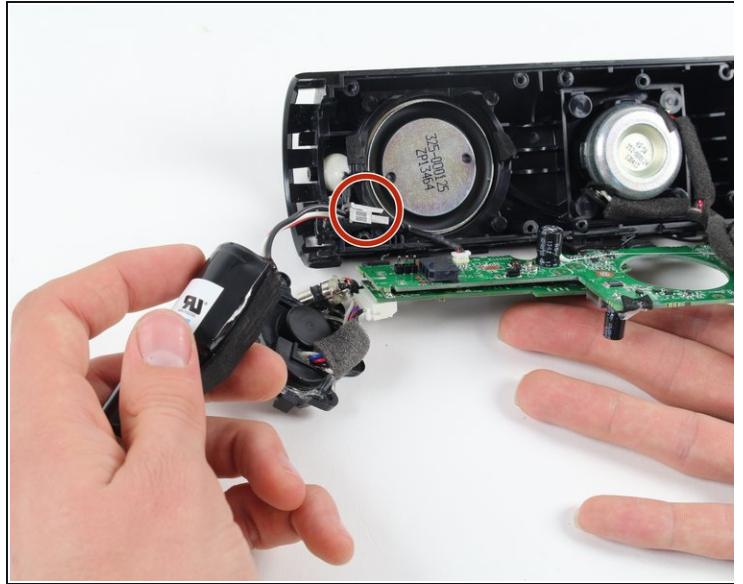
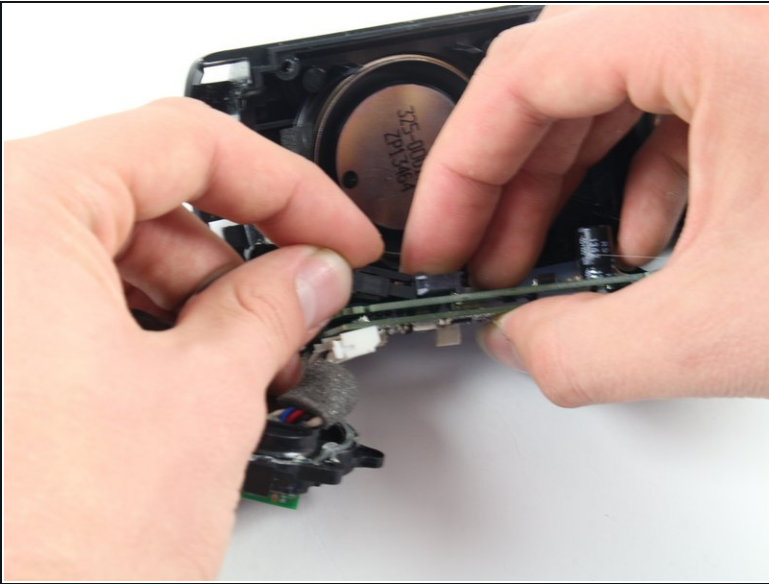
- With the Phillips #2 screwdriver, unscrew the 9.9 mm screw from the larger circuit board surrounding the speaker.

## Step 15



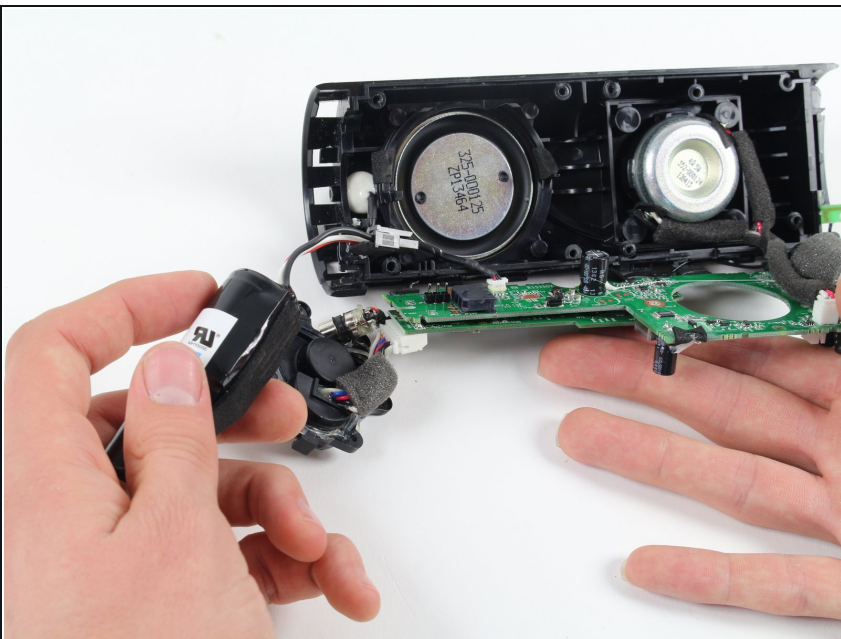
- Once all of the screws are gone, you should be able to remove the circuit boards and find the battery.

## Step 16



- Remove the battery by pulling it from the terminal as marked in the picture.

## Step 17 — Speaker



- At this point, you should have the case completely open and removed the battery from the motherboard.

## Step 18



- Remove the panel covering the speaker with the spudger. Be careful while doing this, as it is a very fragile and brittle metal panel.

## Step 19



- Unscrew the bolts holding the speaker in after removing the panel covering the speakers.



## Step 20



- Gently pull the speaker off of the case after unscrewing the screws holding it in place.

## Step 21



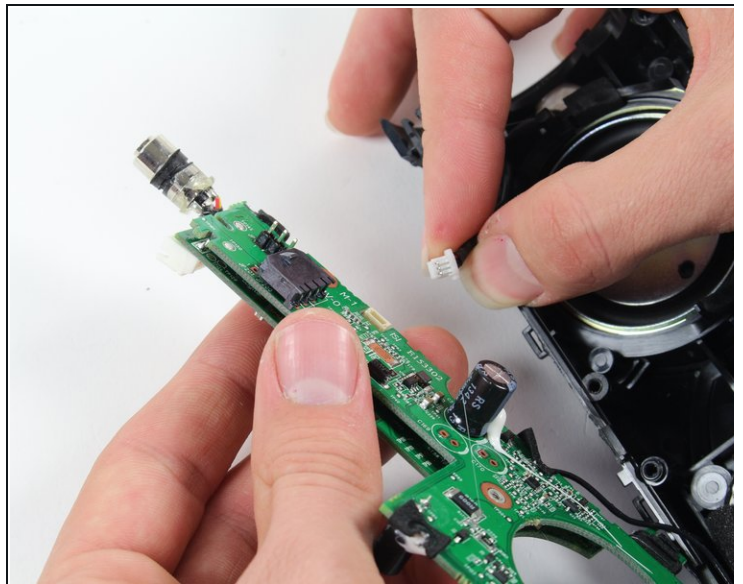
- Start unscrewing the screws on the second speaker (the process for removing the panels is the same for both speakers!).

## Step 22



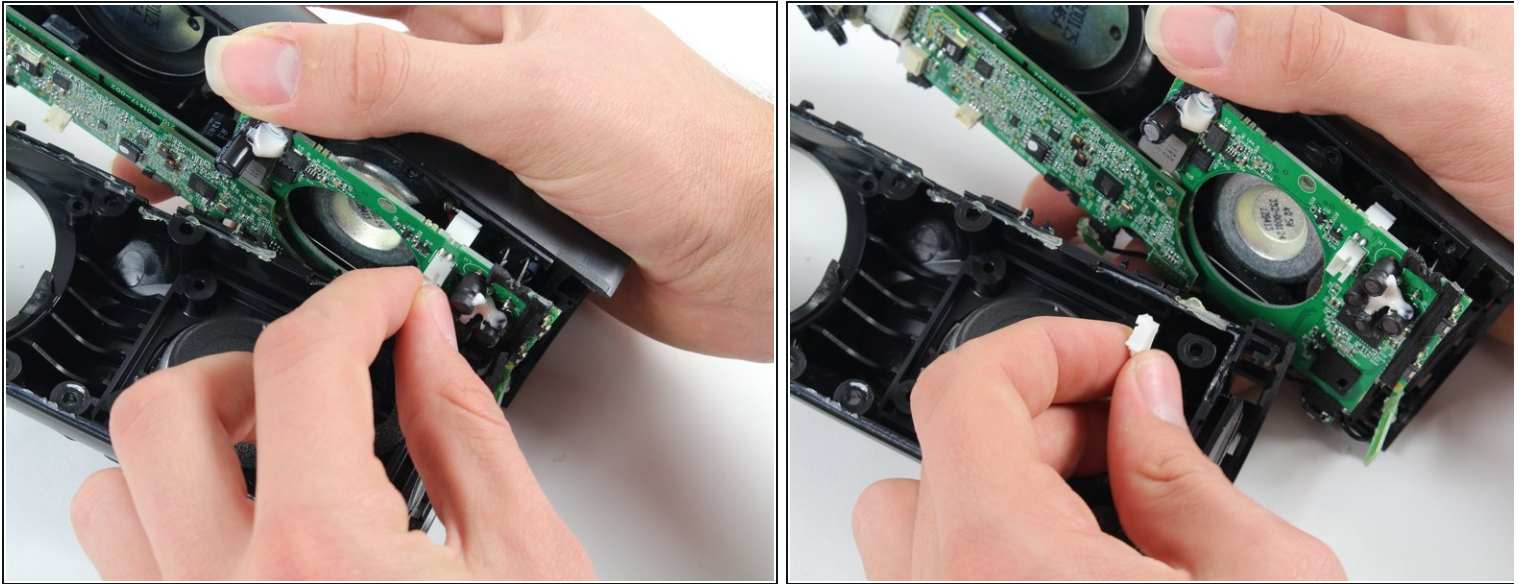
- Remove the speaker from the casing as was done previously with the other speaker.

## Step 23



- Gently unplug the speaker from the motherboard after removing it from its place in the casing of the device.

## Step 24



- Gently unplug the other speaker from the motherboard after removing it from its place in the casing of the device.
  - After this, you will have completely removed the speakers from the device!
- 

To reassemble your device, follow these instructions in reverse order.