



Logitech UE Boom Motherboard Replacement

Written By: Sean Reilly





TOOLS:

Mako Driver Kit - 64 Precision Bits (1)

Metal Spudger (1)

iFixit Opening Tool (1)

Soldering Iron 60w Hakko 503F (1)

Step 1 — D-ring



- Turn the device over. The D-ring will be on the left face of the speaker when viewing the device from this orientation.

Step 2



- Lift the handle on the D-ring and unscrew it.
- Remove the D-ring.

Step 3 — Bluetooth Adapter



⚠ Any repairs made from this point forward will void your device's warranty.

- Holding the speaker upright, wedge the metal spudger in between the casing and the speaker. Gently pry open the tabs as they are easily broken.

Step 4



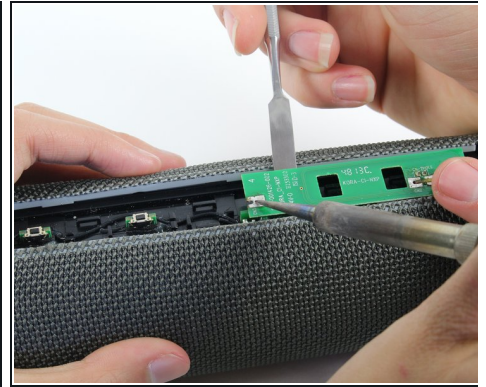
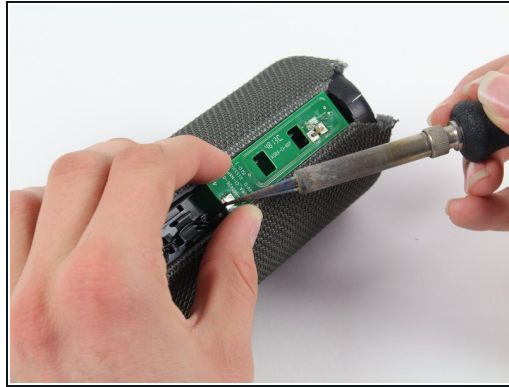
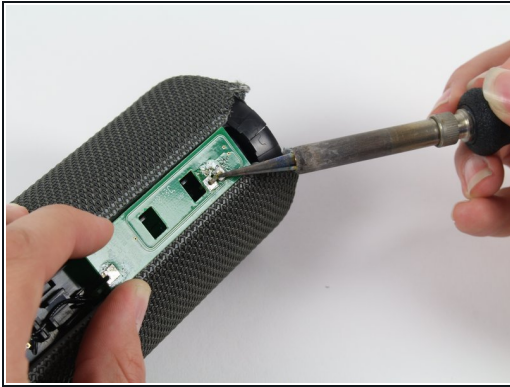
- Find the part of the casing that covers the volume controls. Wedge the metal spudger under this and pry open all of the tabs as in the previous step.
- Repeat for the bottom of the speaker and pry the casing open with your fingers.

Step 5



- Using the Phillips J0 head screwdriver, unscrew the four silver 9 mm screws.
- Do the same for the two black 7 mm screws.

Step 6



⚠ This next step involves the use of a hot soldering iron. Remember to be careful during this step since it can be easy to burn yourself.

- Using a soldering iron, de-solder the two ends of the switch plate.

Step 7



- With the switch plate disconnected, remove it and your device should now look like this.

Step 8 — Lithium Battery



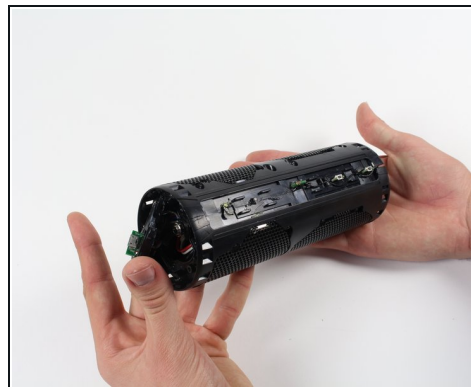
- With a metal spudger, pry open the tabs on the speaker sleeve along the length of the speaker.

Step 9



- Use a plastic opening tool to pry the sleeve off from the bottom of the speaker.

Step 10



- Peel off the sleeve.

Step 11



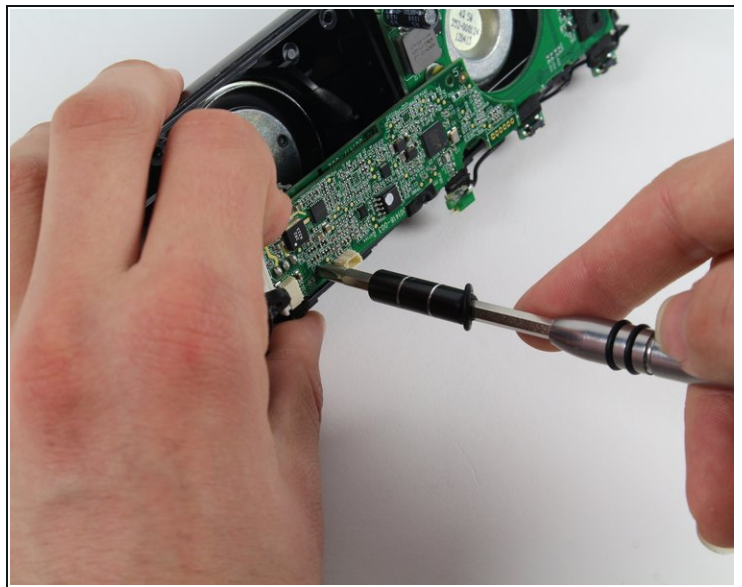
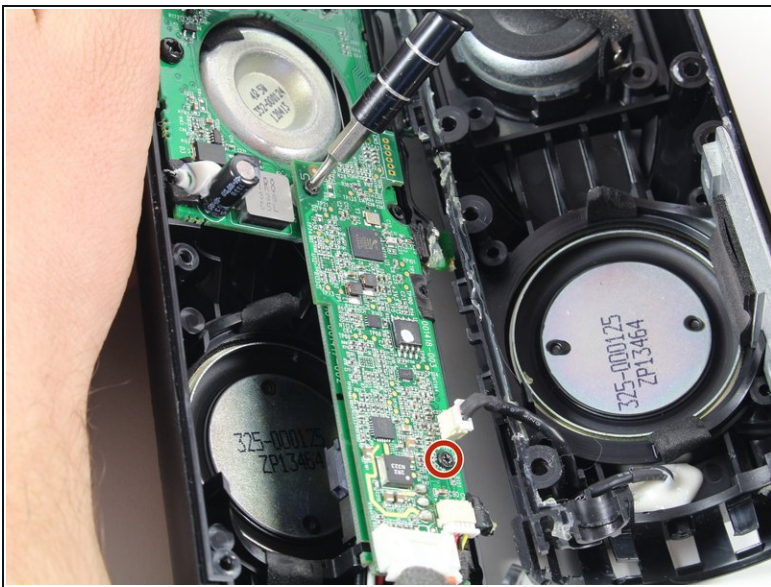
- Use a Phillips 1 screwdriver to unscrew the eight black 14 mm screws along the length of the casing.

Step 12



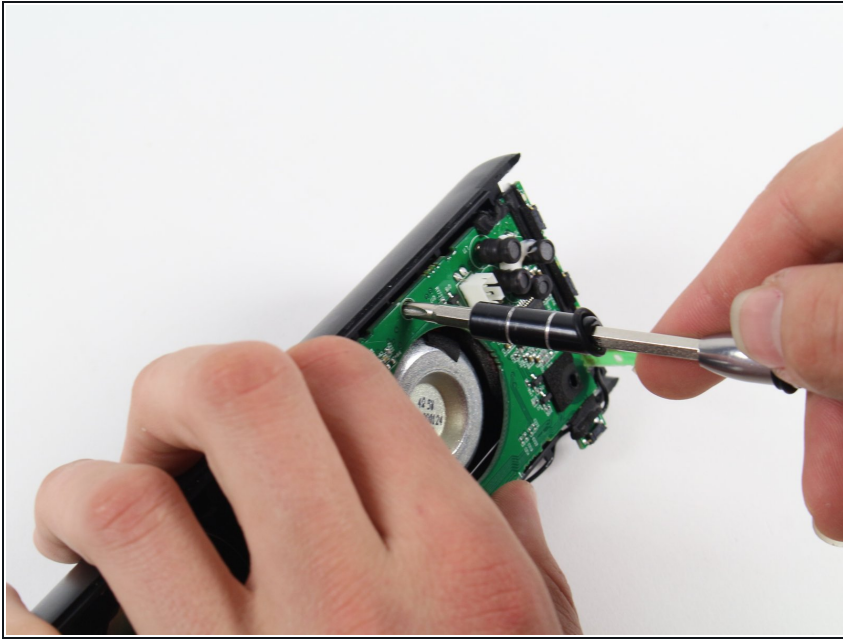
- With the screws removed, pry open the casing to be able to get to the components inside.
- ⓘ Try prying the case open from one of the ends if that is easier.

Step 13



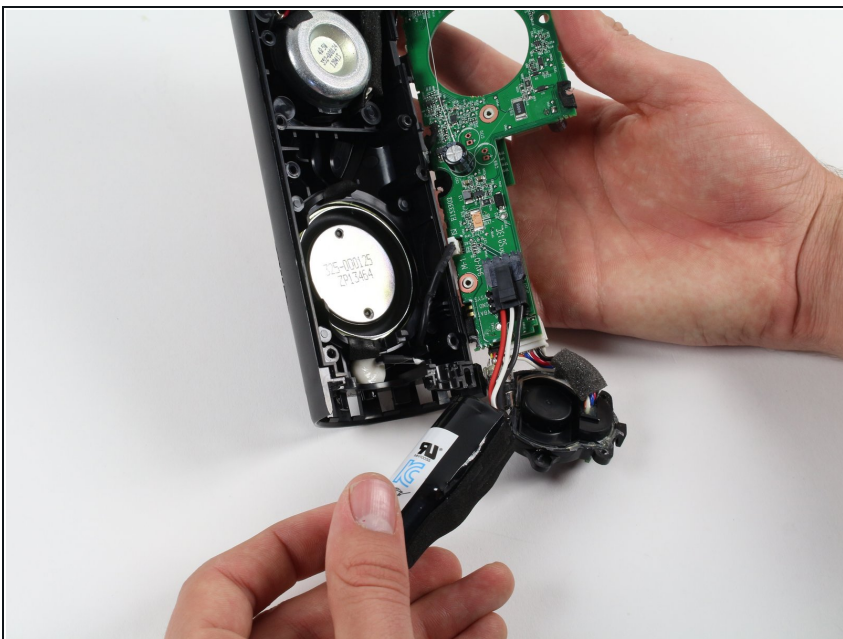
- With a Phillips #00 screwdriver, unscrew two 5.6 mm screws from the rectangular shaped circuit board.

Step 14



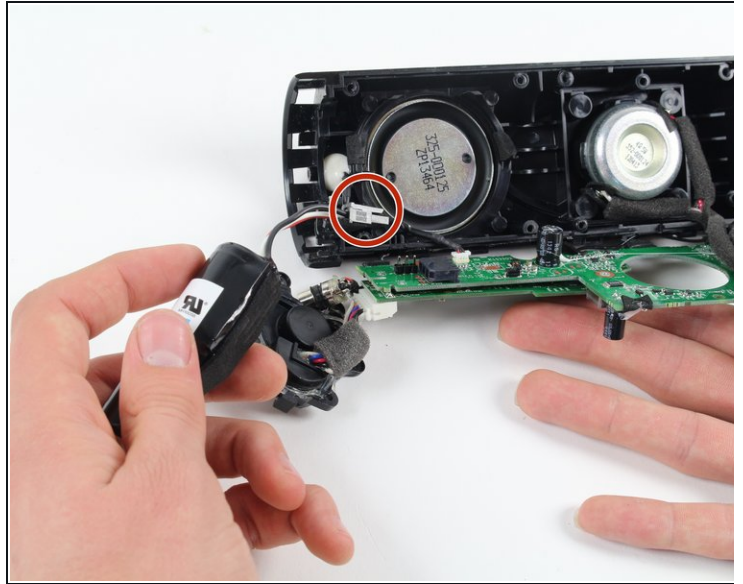
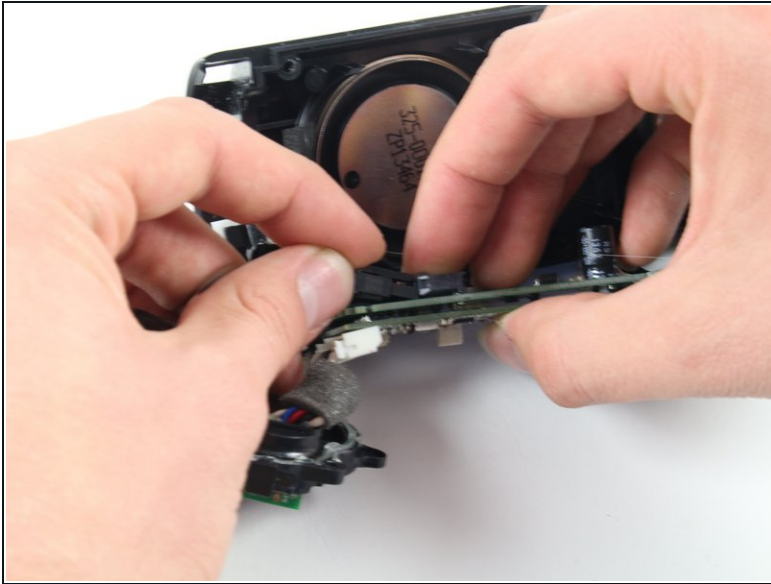
- With the Phillips #2 screwdriver, unscrew the 9.9 mm screw from the larger circuit board surrounding the speaker.

Step 15



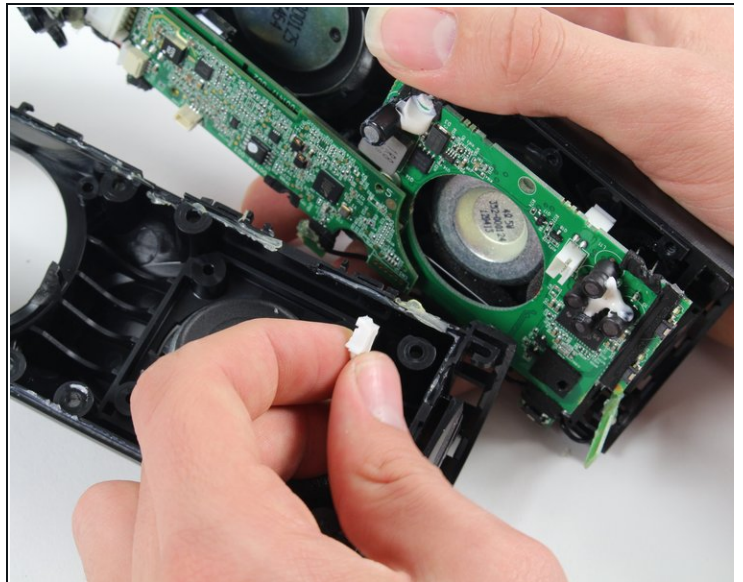
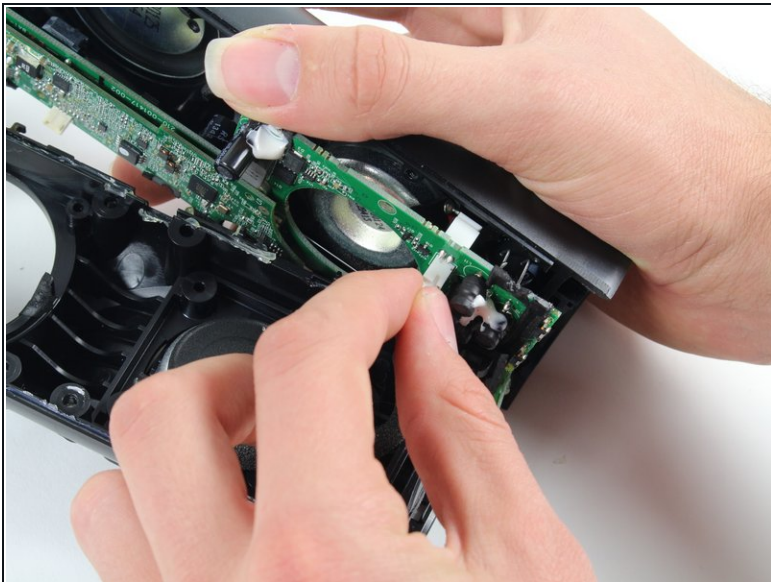
- Once all of the screws are gone, you should be able to remove the circuit boards and find the battery.

Step 16



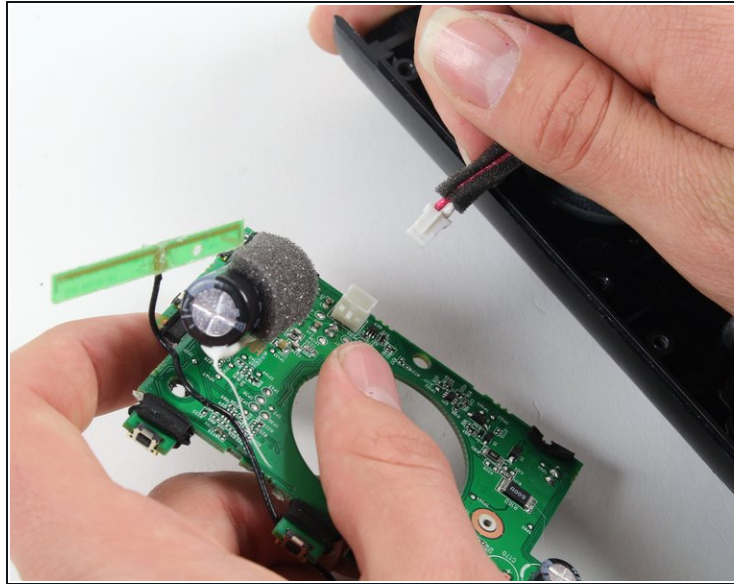
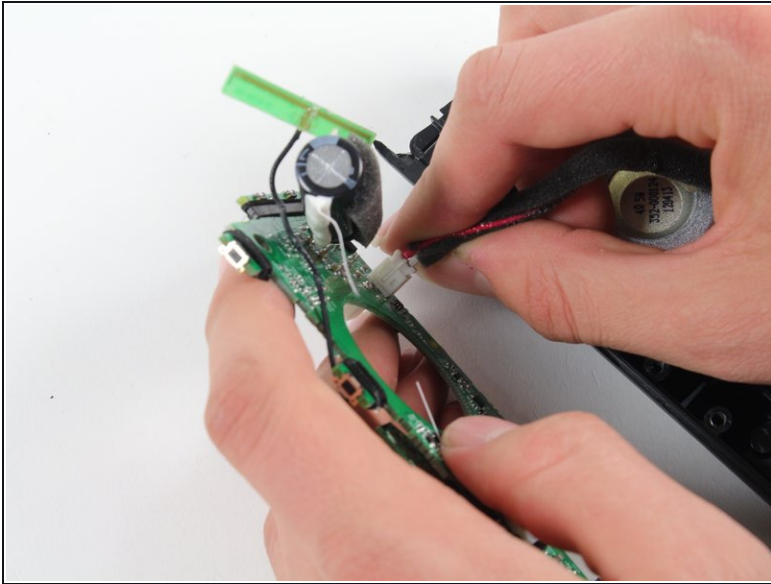
- Remove the battery by pulling it from the terminal as marked in the picture.

Step 17 — Motherboard



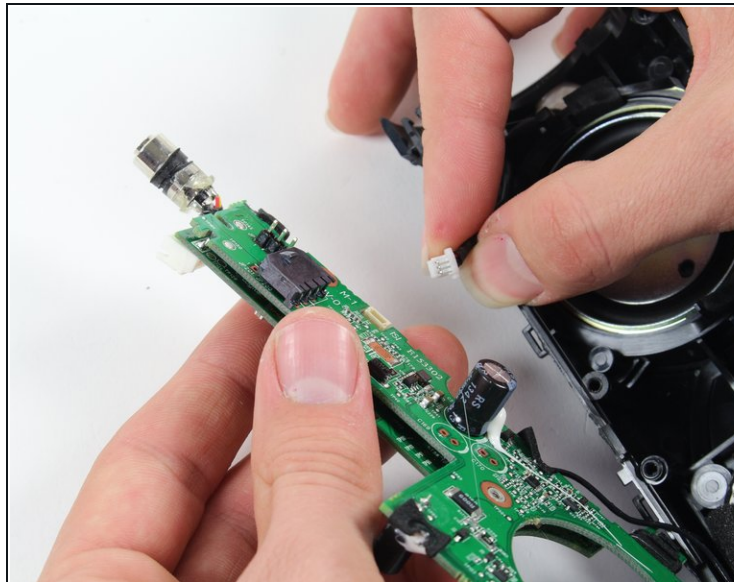
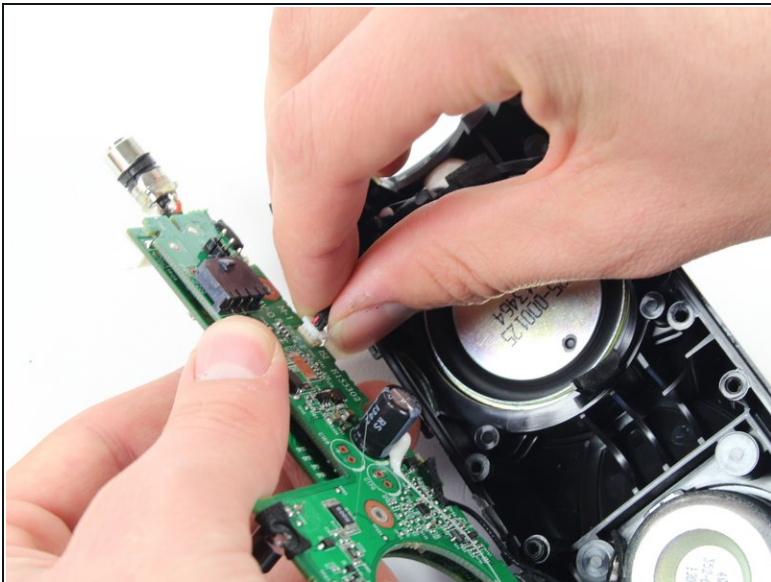
- Remove the speaker by pulling it from the terminal as marked in the picture.

Step 18



- Remove the second speaker by pulling it from the terminal as marked in the picture.

Step 19



- Finally, remove the motherboard completely by pulling it from the terminal as marked in the picture.

To reassemble your device, follow these instructions in reverse order.

